

# SURVEY CONTROL SHEET B-3665

PROJECT REFERENCE NO.	SHEET NO.
33210.11	I-C
LOCATION AND SURVEYS	

### NOTES

THE CONTROL DATA FOR THIS PROJECT CAN BE FOUND ELECTRONICALLY BY SELECTING PROJECT CONTROL DATA AT:  
 HTTP://WWW.DOH.DOT.STATE.NC.US/PRECONSTRUCT/HIGHWAY/LOCATION/PROJECT/  
 FILE: B3665\_LS\_CONTROL\_041018.TXT  
 SITE CALIBRATION INFORMATION HAS NOT BEEN PROVIDED FOR THIS PROJECT.  
 IF FURTHER INFORMATION IS NEEDED, PLEASE CONTACT THE LOCATION AND SURVEYS UNIT.

BL	POINT	DESC.	NORTH	EAST	ELEVATION	L STATION	OFFSET
1	BL1		581135.5340	985141.7810	2135.40	OUTSIDE PROJECT LIMITS	
2	BL2		581545.1970	985182.8990	2144.61	OUTSIDE PROJECT LIMITS	
3	BL3		582060.5230	985123.0040	2146.08	10+69.17	11.36 LT
4	BL4		582684.9330	985189.6780	2111.80	16+96.63	2.41 LT
5	BL5		583258.6420	985251.9730	2120.27	22+73.64	11.24 LT
6	BL6		583757.2890	985342.7630	2139.65	OUTSIDE PROJECT LIMITS	

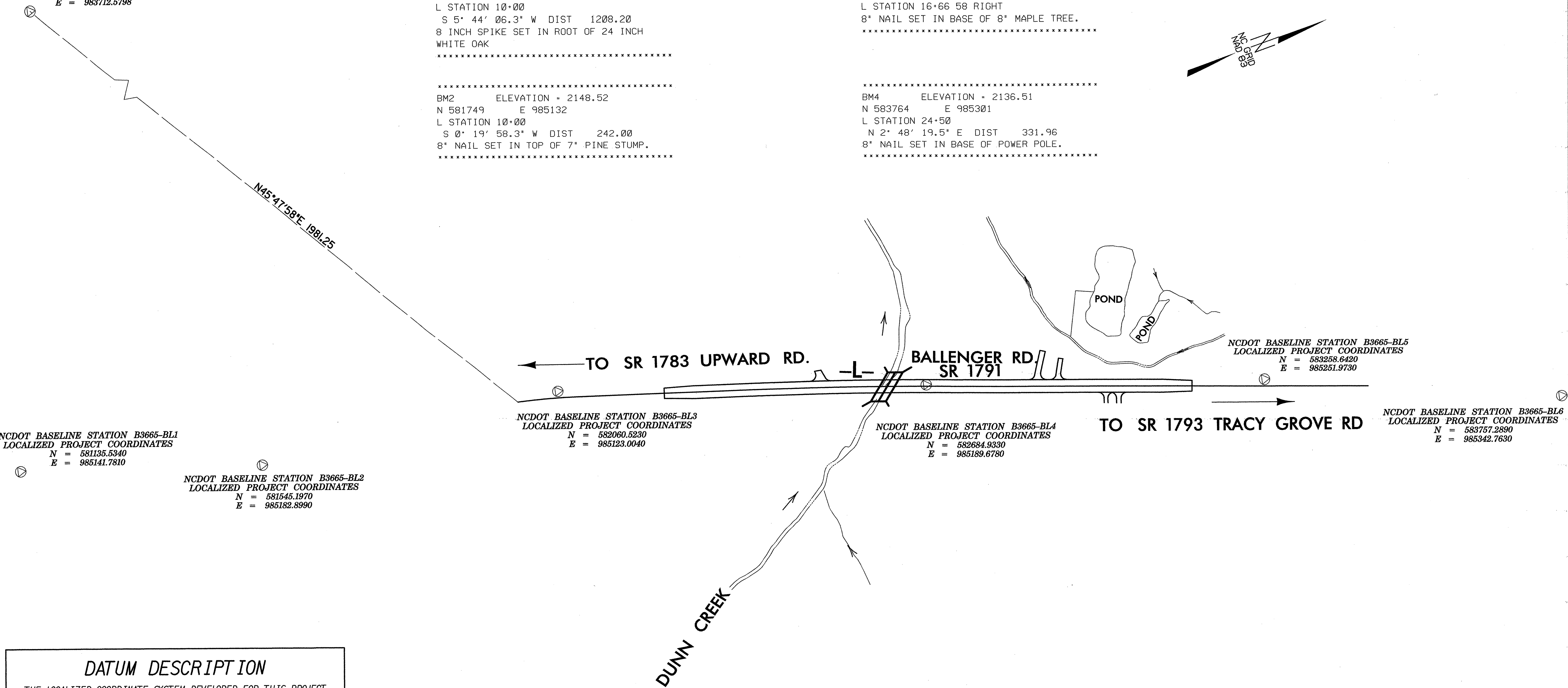
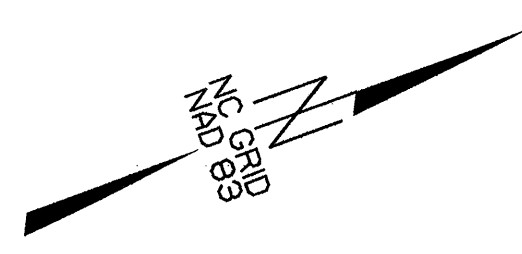
**NCGS MONUMENT (UPWARD)**  
**LOCALIZED PROJECT COORDINATES**  
 N = 580609.4818  
 E = 983712.5798

\*\*\*\*\*  
 BM1 ELEVATION = 2151.60  
 N 580789 E 985012  
 L STATION 10+00  
 S 5° 44' 06.3" W DIST 1208.20  
 8 INCH SPIKE SET IN ROOT OF 24 INCH  
 WHITE OAK  
 \*\*\*\*\*

\*\*\*\*\*  
 BM3 ELEVATION = 2111.37  
 N 582648 E 985247  
 L STATION 16+66 58 RIGHT  
 8" NAIL SET IN BASE OF 8" MAPLE TREE.  
 \*\*\*\*\*

\*\*\*\*\*  
 BM2 ELEVATION = 2148.52  
 N 581749 E 985132  
 L STATION 10+00  
 S 0° 19' 58.3" W DIST 242.00  
 8" NAIL SET IN TOP OF 7" PINE STUMP.  
 \*\*\*\*\*

\*\*\*\*\*  
 BM4 ELEVATION = 2136.51  
 N 583764 E 985301  
 L STATION 24+50  
 N 2° 48' 19.5" E DIST 331.96  
 8" NAIL SET IN BASE OF POWER POLE.  
 \*\*\*\*\*



NCDOT BASELINE STATION B3665-BL1  
 LOCALIZED PROJECT COORDINATES  
 N = 581135.5340  
 E = 985141.7810

NCDOT BASELINE STATION B3665-BL2  
 LOCALIZED PROJECT COORDINATES  
 N = 581545.1970  
 E = 985182.8990

NCDOT BASELINE STATION B3665-BL3  
 LOCALIZED PROJECT COORDINATES  
 N = 582060.5230  
 E = 985123.0040

NCDOT BASELINE STATION B3665-BL4  
 LOCALIZED PROJECT COORDINATES  
 N = 582684.9330  
 E = 985189.6780

NCDOT BASELINE STATION B3665-BL5  
 LOCALIZED PROJECT COORDINATES  
 N = 583258.6420  
 E = 985251.9730

NCDOT BASELINE STATION B3665-BL6  
 LOCALIZED PROJECT COORDINATES  
 N = 583757.2890  
 E = 985342.7630

**DATUM DESCRIPTION**

THE LOCALIZED COORDINATE SYSTEM DEVELOPED FOR THIS PROJECT IS BASED ON THE STATE PLANE COORDINATES ESTABLISHED BY NCGS FOR MONUMENT "UPWARD" WITH NAD 83 STATE PLANE GRID COORDINATES OF NORTHING: 580609.4818(ft) EASTING: 983712.5798(ft) THE AVERAGE COMBINED GRID FACTOR USED ON THIS PROJECT (GROUND TO GRID) IS: 0.999735035 THE N.C. LAMBERT GRID BEARING AND LOCALIZED HORIZONTAL GROUND DISTANCE FROM "UPWARD" TO L- STATION 10+00.00 IS N45°47'58"E 1981.25 ALL LINEAR DIMENSIONS ARE LOCALIZED HORIZONTAL DISTANCES VERTICAL DATUM USED IS NGVD 29

⊙ INDICATES GEODETIC CONTROL MONUMENTS USED OR SET FOR HORIZONTAL PROJECT CONTROL BY THE NCDOT LOCATION AND SURVEYS UNIT. PROJECT CONTROL ESTABLISHED USING NCGS MONUMENT (UPWARD)

NOTE: DRAWING NOT TO SCALE

01/04/2005 10:02:46 AM F:\LocationSurveys\B3665\_ls\_041018.dgn