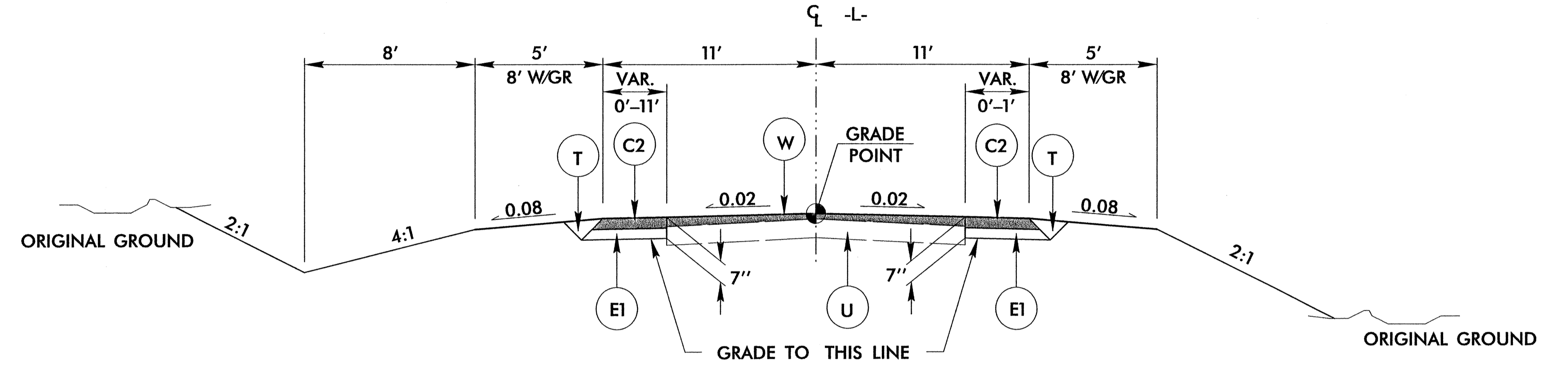


7/2/99

PAVEMENT SCHEDULE	
C1	PROP. APPROX. 1.5" ASPHALT CONCRETE SURFACE COURSE, TYPE SF9.5A, AT AN AVERAGE RATE OF 165 LBS. PER SQ. YD.
C2	PROP. APPROX. 3" ASPHALT CONCRETE SURFACE COURSE, TYPE SF9.5A, AT AN AVERAGE RATE OF 165 LBS. PER SQ. YD IN EACH OF TWO LAYERS.
C3	PROP. VAR. DEPTH ASPHALT CONCRETE SURFACE COURSE, TYPE SF9.5A, AT AN AVERAGE RATE OF 110 LBS. PER SQ. YD. PER 1" DEPTH. TO BE PLACED IN LAYERS NOT TO EXCEED 1 1/2" IN DEPTH.
E1	PROP. APPROX. 4" ASPHALT CONCRETE BASE COURSE, TYPE B25.0B, AT AN AVERAGE RATE OF 456 LBS. PER SQ. YD.
E2	PROP. VAR. DEPTH ASPHALT CONCRETE BASE COURSE, TYPE B25.0B, AT AN AVERAGE RATE OF 114 LBS. PER SQ. YD. PER 1" DEPTH. TO BE PLACED IN LAYERS NOT LESS THAN 3" IN DEPTH OR GREATER THAN 5 1/2" IN DEPTH.
R	SHOULDER BERM GUTTER
T	EARTH MATERIAL.
U	EXISTING PAVEMENT.
W	WEDGING (SEE WEDGING DETAIL)

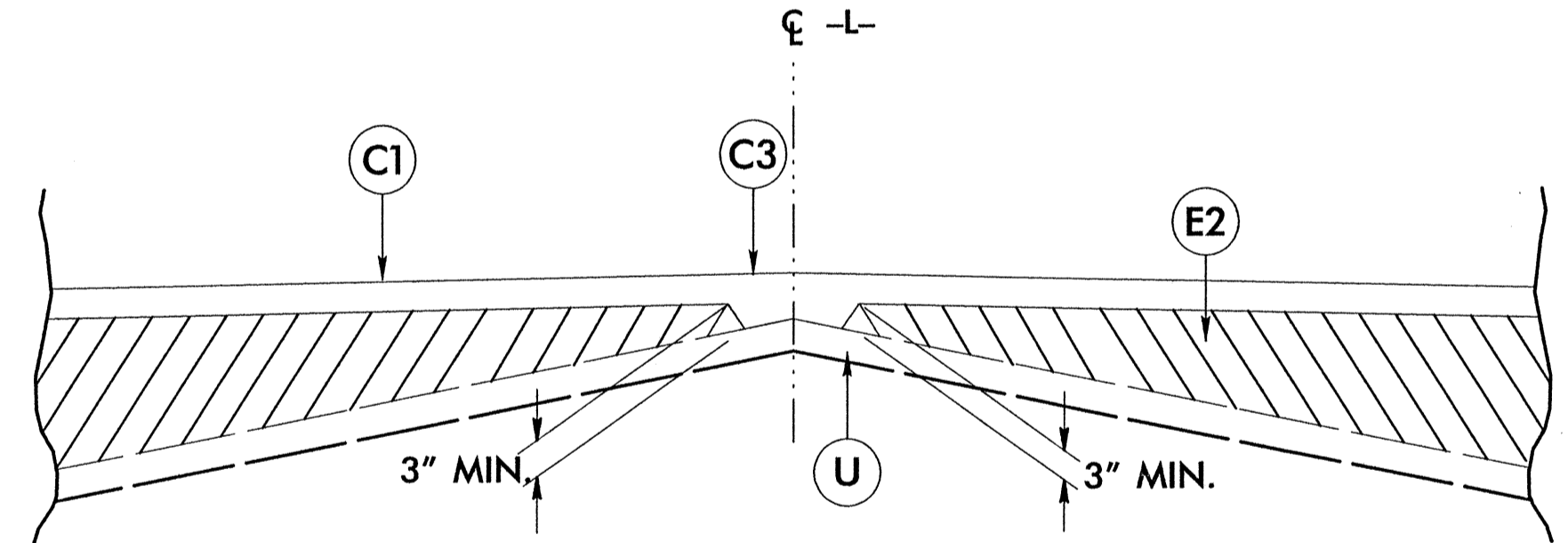
NOTE: PAVEMENT EDGE SLOPES ARE 1:1 UNLESS SHOWN OTHERWISE.



TYPICAL SECTION NO. 1

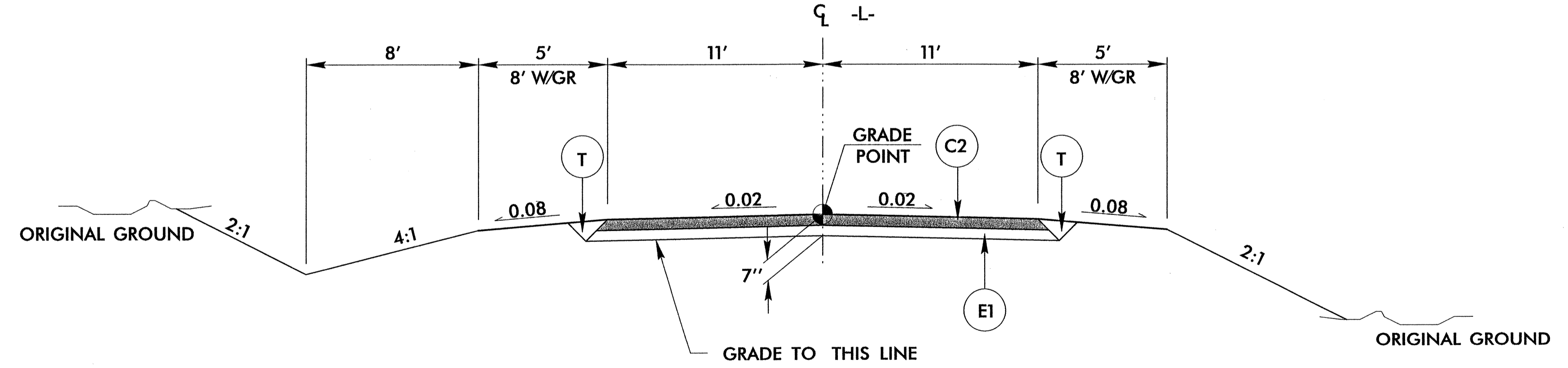
USE TYPICAL SECTION NO. 1
AT THE FOLLOWING LOCATIONS:

- L- STA 12+50.00 TO STA 13+75.00
- L- STA 17+50.00 TO STA 21+50.00



DETAIL SHOWING METHOD OF WEDGING

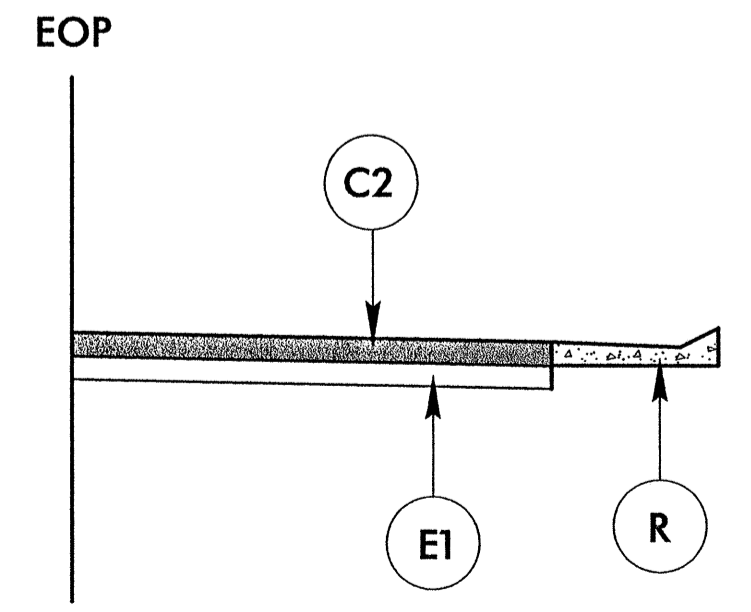
USE IN CONJUNCTION WITH TYPICAL SECTION NO. 1



TYPICAL SECTION NO. 2

USE TYPICAL SECTION NO. 2
AT THE FOLLOWING LOCATIONS:

- L- STA 13+75.00 TO STA 17+50.00



DETAIL No. 1

USE IN CONJUNCTION WITH TYPICAL SECTION NO. 2

- L- STA 13+00.00 TO STA 15+75.00 RT