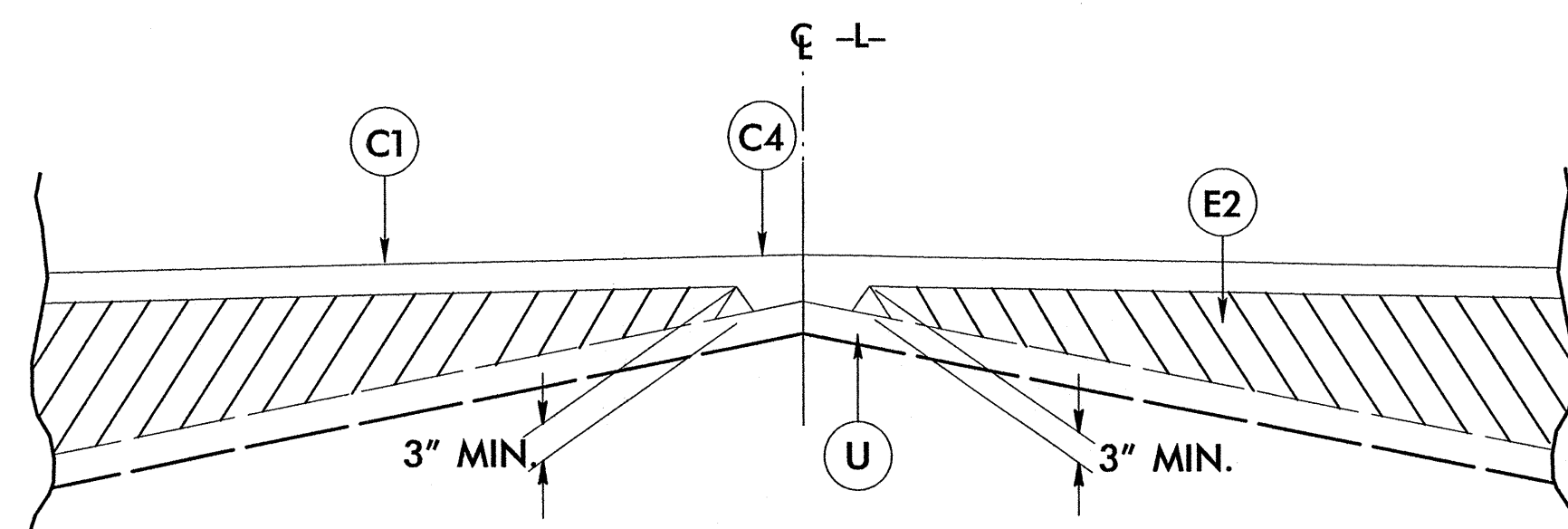


# PAVEMENT SCHEDULE

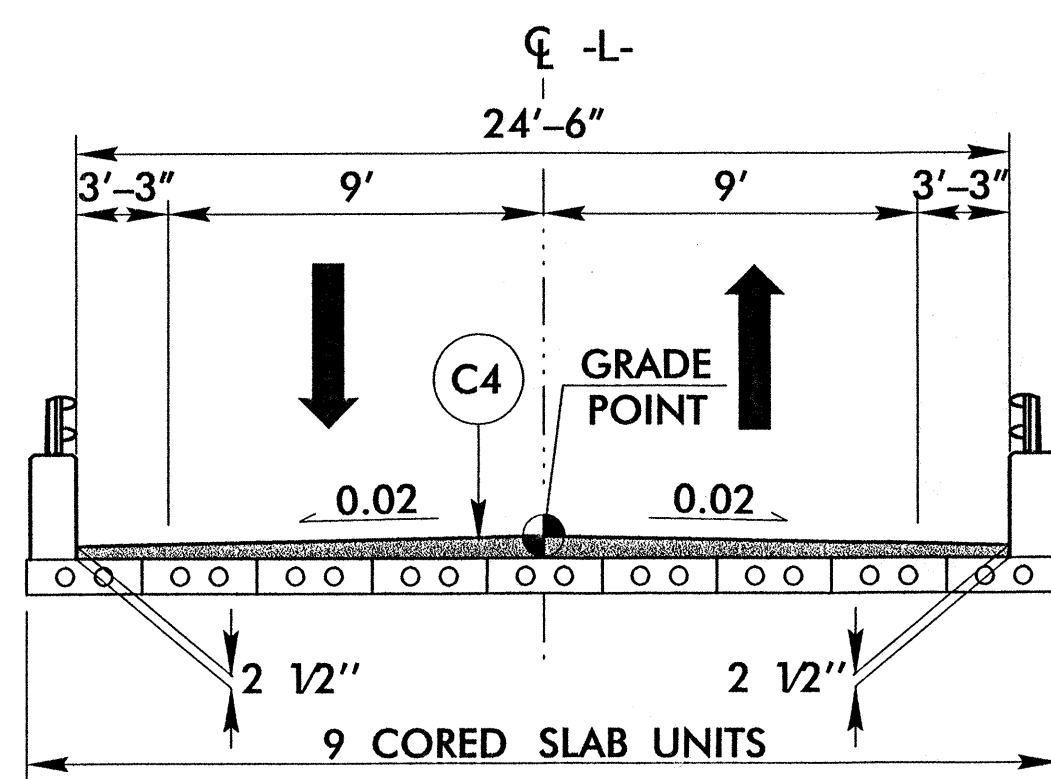
C1	PROPOSED APPROX. 1/4" ASPHALT CONCRETE SURFACE COURSE, TYPE SF9.5A, AT AN AVERAGE RATE OF 137.5 LBS. PER SQ. YARD.
C2	PROPOSED APPROX. 2" ASPHALT CONCRETE SURFACE COURSE, TYPE SF9.5A, AT AN AVERAGE RATE OF 110 LBS. PER SQ. YARD IN EACH OF 2 LAYERS.
C3	PROPOSED APPROX. 2 1/2" ASPHALT CONCRETE SURFACE COURSE, TYPE SF9.5A, AT AN AVERAGE RATE OF 137.5 LBS. PER SQ. YARD IN EACH OF 2 LAYERS.
C4	PROPOSED VARIABLE DEPTH ASPHALT CONCRETE SURFACE COURSE, TYPE SF9.5A, AT AN AVERAGE RATE OF 110 LBS. PER SQ. YARD, PER 1" DEPTH, TO BE PLACED IN LAYERS NOT LESS THAN 1" OR GREATER THAN 1 1/2" IN DEPTH.
E1	PROPOSED APPROX. 4" ASPHALT CONCRETE BASE COURSE, TYPE B25.0B, AT AN AVERAGE RATE OF 456 LBS. PER SQ. YARD.
E2	PROPOSED VARIABLE DEPTH ASPHALT CONCRETE BASE COURSE, TYPE B25.0B, AT AN AVERAGE RATE OF 114 LBS. PER SQ. YARD, PER 1" DEPTH, TO BE PLACED IN LAYERS NOT LESS THAN 3" OR GREATER THAN 5 1/2" IN DEPTH.
J	6" AGGREGATE BASE COURSE
U	EXISTING PAVEMENT
W	WEDGING (SEE WEDGING DETAIL)

NOTE: ALL PAVEMENT EDGE SLOPES ARE 1:1 UNLESS OTHERWISE SHOWN.



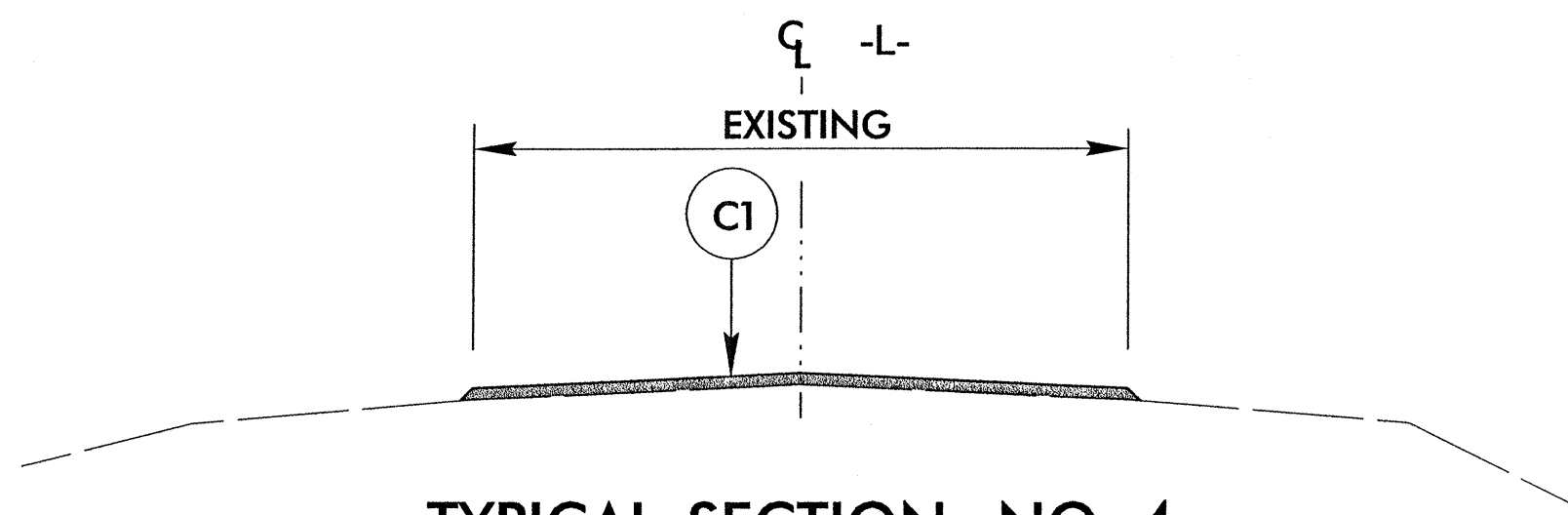
**DETAIL SHOWING METHOD OF WEDGING**

USE IN CONJUNCTION WITH TYPICAL SECTION NO. 1



**DETAIL OF CORED SLAB BRIDGE**

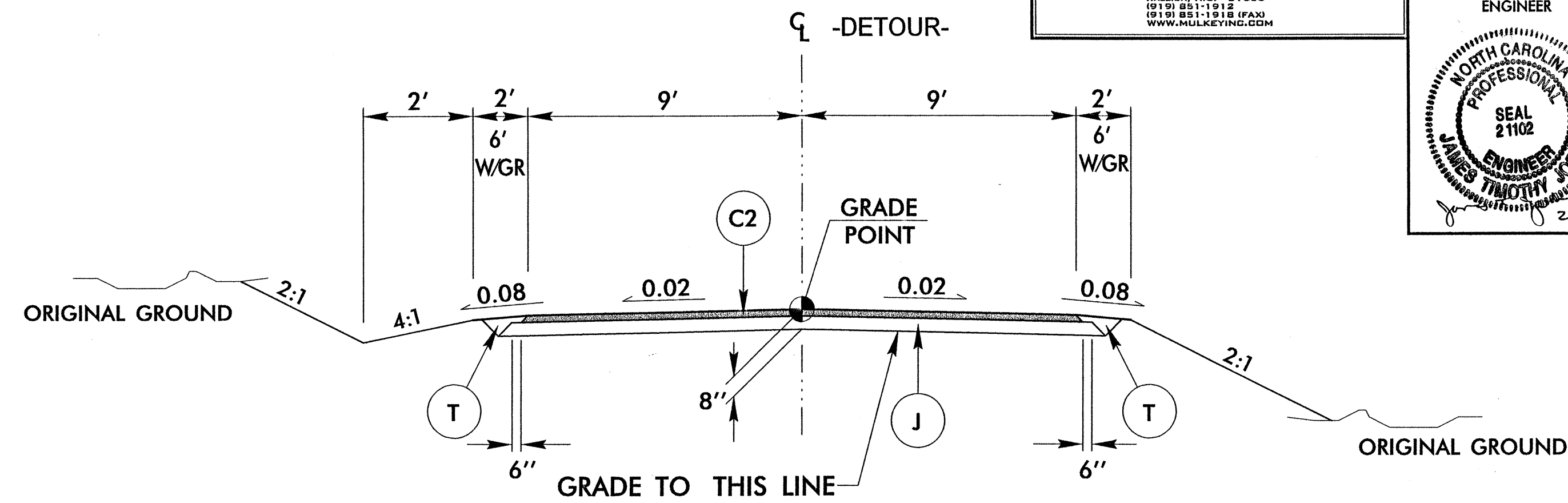
-L- STA 12+73.80 TO STA 13+18.80



**TYPICAL SECTION NO. 4**

-L- STA 10+42.71 TO STA 11+35.00  
-L- STA 14+50.00 TO STA 16+07.70

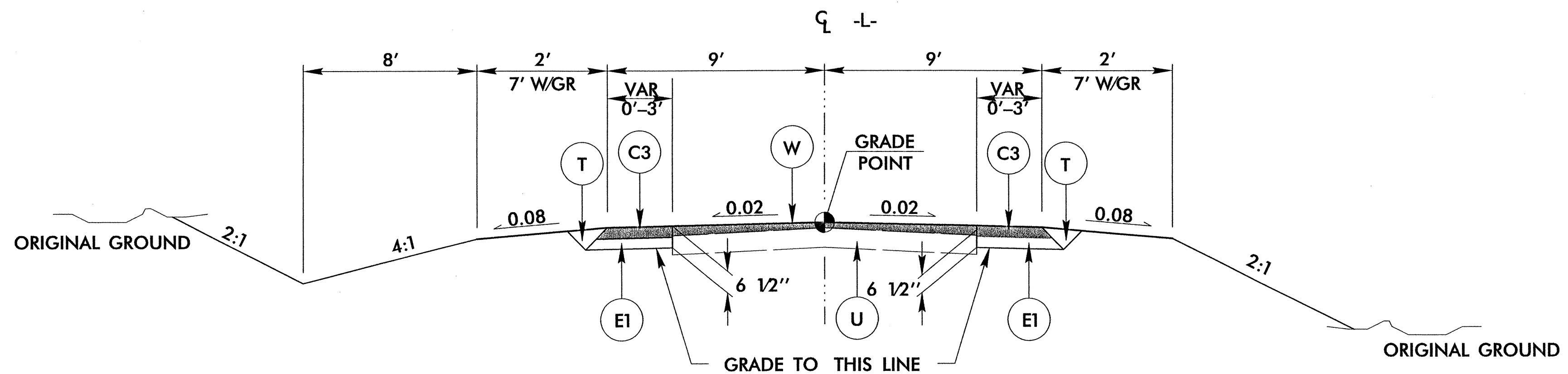
TRANSITION FROM TYPICAL SECTION NO. 4 TO TYPICAL SECTION NO. 2  
-L- STA 11+35.00 TO STA 11+80.00



**TYPICAL SECTION NO. 1**

USE TYPICAL SECTION NO. 1  
AT THE FOLLOWING LOCATION:

-DETOUR- STA 10+86.76 TO STA 12+87.12 (RR)  
-DETOUR- STA 12+96.93 (RR) TO STA 15+64.06

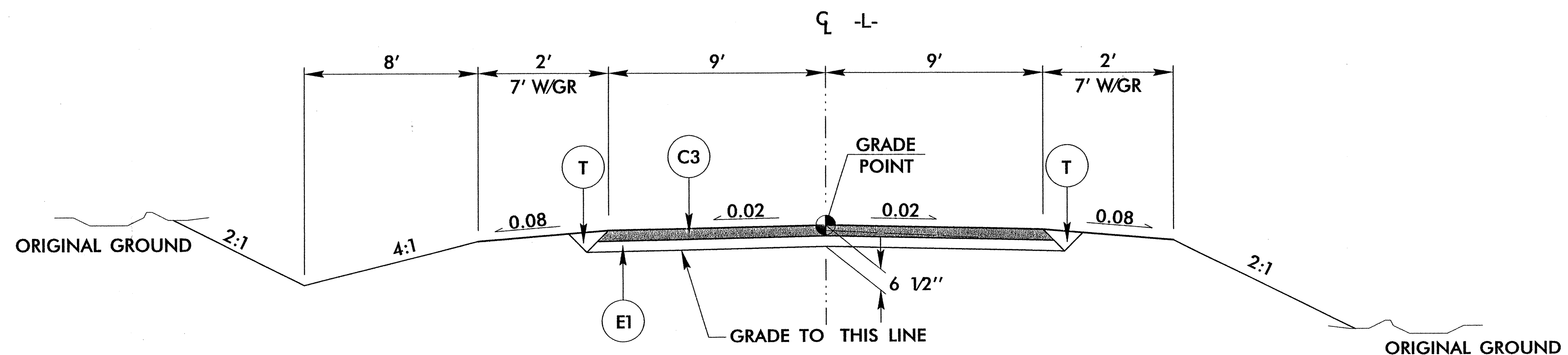


**TYPICAL SECTION NO. 2**

USE TYPICAL SECTION NO. 2  
AT THE FOLLOWING LOCATIONS:

-L- STA 11+80.00 TO STA 12+20.00  
-L- STA 13+69.00 TO STA 14+00.00

TRANSITION FROM TYPICAL SECTION NO. 2 TO TYPICAL SECTION NO. 4  
-L- STA 14+00.00 TO STA 14+50.00



**TYPICAL SECTION NO. 3**

USE TYPICAL SECTION NO. 3  
AT THE FOLLOWING LOCATIONS:

-L- STA 12+20.00 TO STA 12+52.97 (RR)  
-L- STA 12+62.51 (RR) TO STA 12+73.80 (BEGIN BRIDGE)  
-L- STA 13+18.80 (END BRIDGE) TO STA 13+69.00