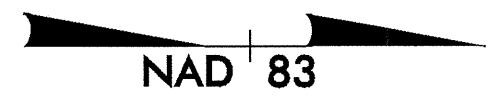


B-3663 33208.11
HENDERSON CO.

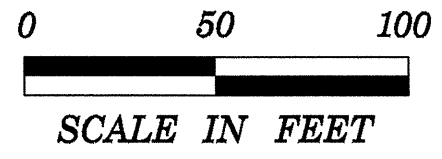
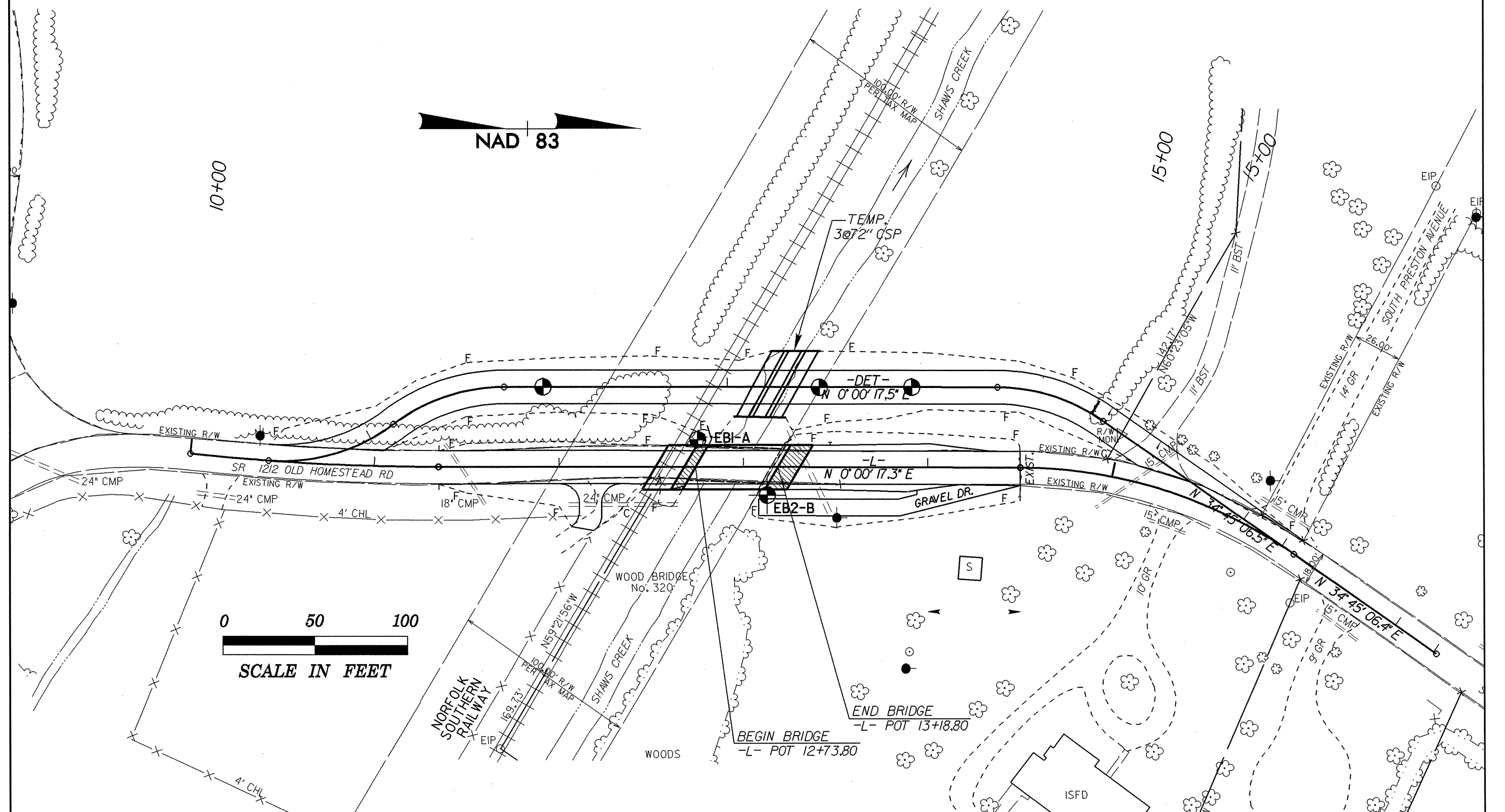
APPROACHES TO BRIDGE NO. 320 ON SR-1212 OVER SHAW CREEK



10+00

15+00

15+00



BEGIN BRIDGE
-L- POT 12+73.80

END BRIDGE
-L- POT 13+18.80

WOOD BRIDGE
No. 320

GRAVEL DR.

SR 1212 OLD HOMESTEAD RD

NORFOLK
SOUTHERN
RAILWAY

ISFD

SOUTH PRESTON AVENUE

TEMP.
3@72" OSP

-DET-
N 0°00'17.5" E

-L-
N 0°00'17.3" E

N 34°45'06.4" E

15' CMP

10' GR

15' CMP

9' GR

EXISTING R/W

EXISTING R/W

EXISTING R/W

EXISTING R/W

EXISTING R/W

EXISTING R/W

EXISTING R/W

EXISTING R/W

EXISTING R/W

EXISTING R/W

EXISTING R/W

EXISTING R/W

EXISTING R/W

EXISTING R/W

EXISTING R/W

EXISTING R/W

EXISTING R/W

EXISTING R/W

EXISTING R/W

EXISTING R/W

EXISTING R/W

EXISTING R/W

EXISTING R/W

EXISTING R/W

EXISTING R/W

EXISTING R/W

24" CMP

24" CMP

24" CMP

24" CMP

24" CMP

24" CMP

24" CMP

24" CMP

24" CMP

24" CMP

24" CMP

24" CMP

24" CMP

24" CMP

24" CMP

24" CMP

24" CMP

24" CMP

24" CMP

24" CMP

24" CMP

24" CMP

24" CMP

24" CMP

24" CMP

24" CMP

24" CMP

24" CMP

24" CMP

24" CMP

24" CMP

24" CMP

24" CMP

4' CHL

4' CHL

4' CHL

4' CHL

4' CHL

4' CHL

4' CHL

4' CHL

4' CHL

4' CHL

4' CHL

4' CHL

4' CHL

4' CHL

4' CHL

4' CHL

4' CHL

4' CHL

4' CHL

4' CHL

4' CHL

4' CHL

4' CHL

4' CHL

4' CHL

4' CHL

4' CHL

4' CHL

4' CHL

4' CHL

4' CHL

4' CHL

4' CHL

4' CHL

4' CHL

4' CHL

4' CHL

4' CHL

4' CHL

4' CHL

4' CHL

4' CHL

4' CHL

4' CHL

4' CHL

4' CHL

4' CHL

4' CHL

4' CHL

4' CHL

4' CHL

4' CHL

4' CHL

4' CHL

4' CHL

4' CHL

4' CHL

4' CHL

4' CHL

4' CHL

4' CHL

4' CHL

4' CHL

4' CHL

4' CHL

4' CHL

4' CHL

4' CHL

4' CHL

4' CHL

4' CHL

4' CHL

4' CHL

4' CHL

4' CHL

4' CHL

4' CHL

4' CHL

4' CHL

4' CHL

4' CHL

4' CHL

4' CHL

4' CHL

4' CHL

4' CHL

4' CHL

4' CHL

4' CHL

4' CHL

4' CHL

4' CHL

4' CHL

4' CHL

4' CHL

4' CHL

4' CHL

4' CHL

4' CHL

4' CHL

4' CHL

4' CHL

4' CHL

4' CHL

4' CHL

4' CHL

4' CHL

4' CHL

4' CHL

4' CHL

4' CHL

4' CHL

4' CHL

4' CHL

4' CHL

4' CHL

4' CHL

4' CHL

4' CHL

4' CHL

4' CHL

4' CHL

4' CHL

4' CHL

4' CHL

4' CHL

4' CHL

4' CHL

4' CHL

4' CHL

4' CHL

4' CHL

4' CHL

4' CHL

4' CHL

4' CHL

4' CHL

4' CHL

4' CHL

4' CHL

4' CHL

4' CHL

4' CHL

4' CHL

4' CHL

4' CHL

4' CHL

4' CHL

4' CHL

4' CHL

4' CHL

4' CHL

4' CHL

4' CHL

4' CHL

4' CHL

4' CHL

4' CHL

4' CHL

4' CHL

4' CHL

4' CHL

4' CHL

4' CHL

4' CHL

4' CHL

4' CHL

4' CHL

4' CHL

4' CHL

4' CHL

4' CHL

4' CHL

4' CHL

4' CHL

4' CHL

4' CHL

4' CHL

4' CHL

4' CHL

4' CHL

4' CHL

4' CHL

4' CHL

4' CHL

4' CHL

4' CHL

4' CHL

4' CHL

4' CHL

4' CHL

4' CHL

4' CHL

4' CHL

4' CHL

4' CHL

4' CHL

4' CHL

4' CHL

4' CHL

4' CHL

4' CHL

4' CHL

4' CHL

4' CHL

4' CHL

4' CHL

4' CHL

4' CHL

4' CHL

4' CHL

4' CHL

4' CHL

4' CHL

4' CHL

4' CHL

4' CHL

4' CHL

4' CHL

4' CHL

4' CHL

4' CHL

4' CHL

4' CHL

4' CHL

4' CHL

4' CHL

4' CHL

4' CHL

4' CHL

4' CHL

4' CHL

4' CHL

4' CHL

4' CHL

4' CHL

4' CHL