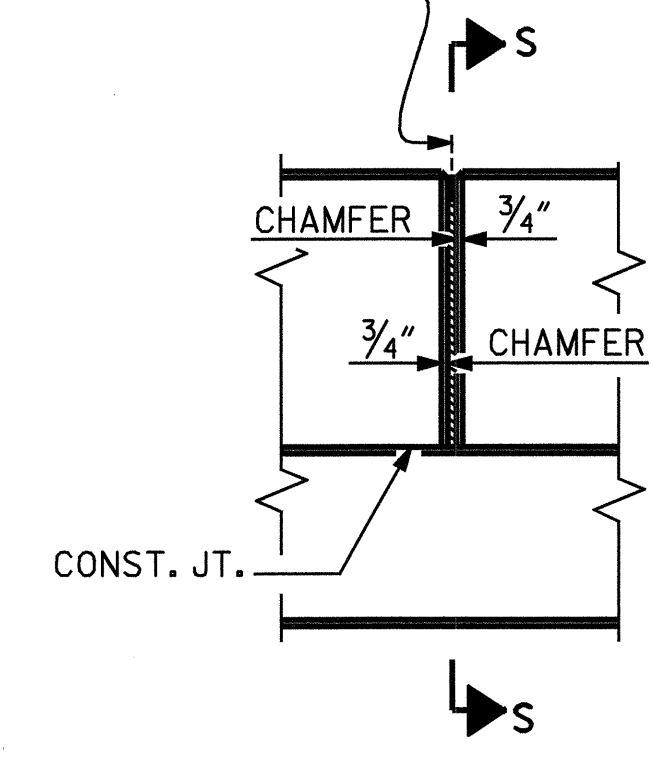
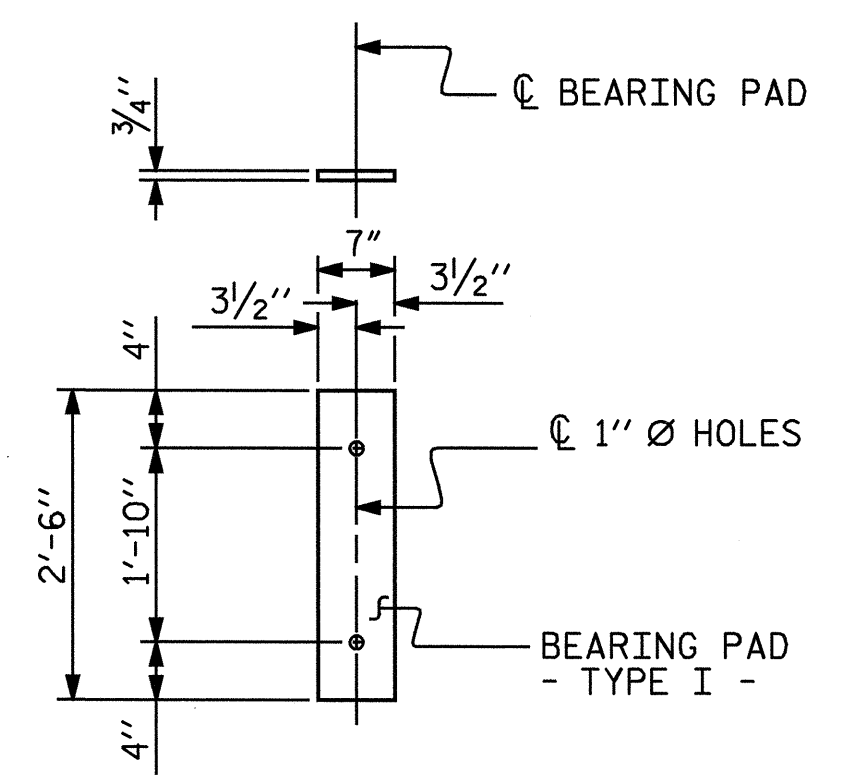


SECTION VIEW

1/2" EXP. JT. MAT'L HELD IN PLACE WITH GALVANIZED NAILS. (NOTE: OMIT EXP. JT. MAT'L. WHEN SLIP FORM IS USED.)



ELEVATION AT EXPANSION JOINTS
CONCRETE PARAPET DETAILS



FIXED END
(TYPE I - 18 REQ'D)

ELASTOMERIC BEARING DETAILS

NOTES

ALL PRESTRESSING STRANDS SHALL BE 7-WIRE LOW RELAXATION GRADE 270 STRANDS AND SHALL CONFORM TO AASHTO M203 EXCEPT FOR SAMPLING REQUIREMENTS WHICH SHALL BE IN ACCORDANCE WITH THE STANDARD SPECIFICATIONS.

ALL REINFORCING STEEL CAST WITH THE CORED SLAB SECTIONS SHALL BE GRADE 60 AND SHALL BE INCLUDED IN THE UNIT PRICE BID FOR PRESTRESSED CONCRETE CORED SLABS.

RECESSES FOR TRANSVERSE STRANDS SHALL BE GROUTED AFTER THE TENSIONING OF THE STRANDS.

THE 1/2" Ø DOWEL HOLES AT FIXED ENDS OF SLAB SECTIONS SHALL BE FILLED WITH GROUT.

THE JOINT SEALER MATERIAL SHALL CONFORM TO THE REQUIREMENTS OF TYPE SL LOW MODULUS SILICONE SEALANT. THE 2" Ø BACKER ROD SHALL CONFORM TO THE REQUIREMENTS OF TYPE M BOND BREAKER. SEE SECTION 1028 OF THE STANDARD SPECIFICATIONS.

FOR ELASTOMERIC BEARINGS, SEE SPECIAL PROVISIONS.

WHEN CORED SLABS ARE CAST, A POSITIVE HOLD-DOWN SYSTEM SHALL BE EMPLOYED TO PREVENT VOIDS FROM RISING OR MOVING SIDWAYS. THIS SYSTEM SHALL BE DESIGNED TO BE LEFT IN PLACE UNTIL THE CONCRETE HAS REACHED RELEASE STRENGTH. AT LEAST THREE WEEKS PRIOR TO CASTING CORED SLABS, THE CONTRACTOR SHALL SUBMIT TO THE ENGINEER FOR REVIEW AND COMMENT, DETAILED DRAWINGS OF THE PROPOSED HOLD-DOWN SYSTEM. IN ADDITION TO STRUCTURAL DETAILS, LOCATION AND SPACING OF THE HOLD-DOWNS SHALL BE INDICATED.

THE TRANSFER OF LOAD FROM THE ANCHORAGES TO THE CORED SLAB UNIT SHALL BE DONE WHEN THE CONCRETE HAS REACHED A COMPRESSIVE STRENGTH OF NOT LESS THAN 4000 PSI.

ALL REINFORCING STEEL IN BARRIER RAILS SHALL BE EPOXY COATED.

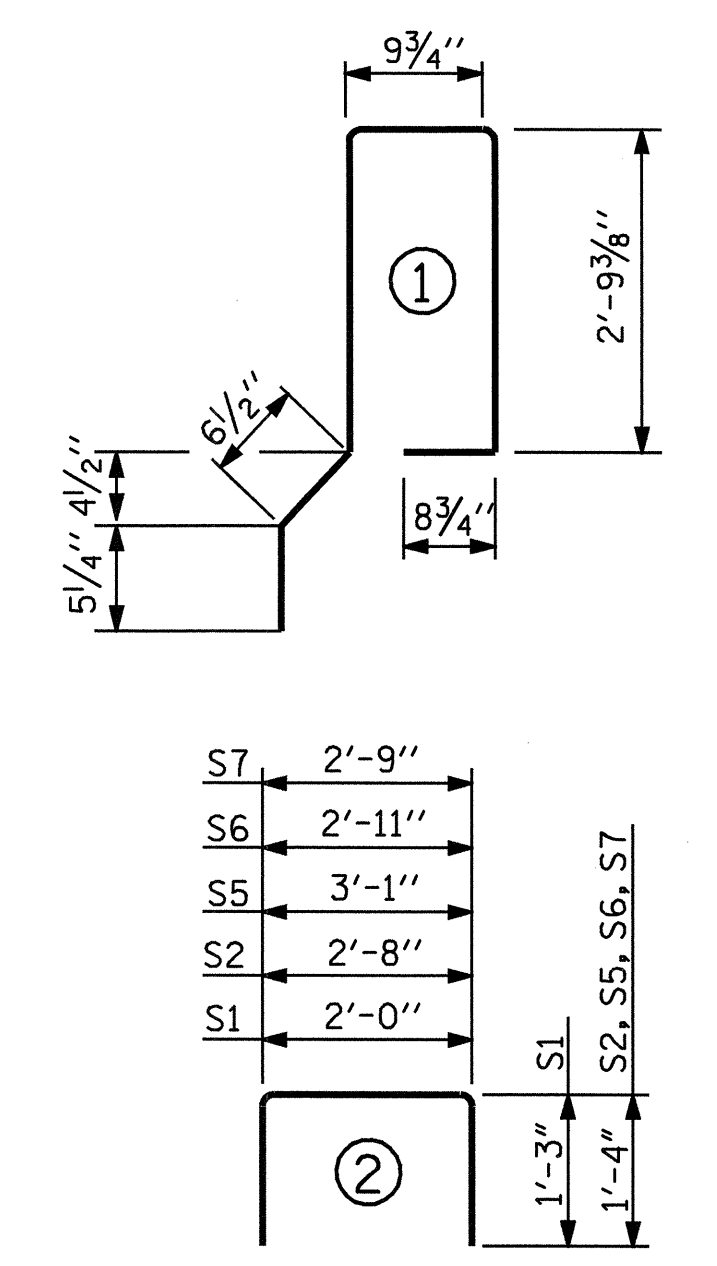
PRESTRESSING STRANDS SHALL BE CUT FLUSH WITH THE CORED SLAB UNIT ENDS.

APPLY EPOXY PROTECTIVE COATING TO CORED SLAB UNIT ENDS. FOR EPOXY PROTECTIVE COATING, SEE SPECIAL PROVISIONS.

VERTICAL GROOVED CONTRACTION JOINTS, 1/2" IN DEPTH, SHALL BE TOOLED IN ALL EXPOSED FACES OF THE CONCRETE PARAPET AND IN ACCORDANCE WITH ARTICLE 825-10(B) OF THE STANDARD SPECIFICATIONS. A JOINT SHALL BE LOCATED AT EACH THIRD POINT BETWEEN CONCRETE PARAPET EXPANSION JOINTS. ONLY ONE JOINT IS REQUIRED AT MIDPOINT OF BARRIER RAIL SEGMENTS LESS THAN 20 FEET IN LENGTH AND NO JOINTS ARE REQUIRED FOR THOSE SEGMENTS LESS THAN 10 FEET IN LENGTH.

FOR PRECAST CONCRETE MEMBERS, SEE SPECIAL PROVISIONS.

BAR TYPES



ALL BAR DIMENSIONS ARE OUT TO OUT

DEAD LOAD DEFLECTION AND CAMBER

CAMBER (SLAB ALONE IN PLACE)	15/16" ↑
DEFLECTION DUE TO SUPERIMPOSED DEAD LOAD ***	3/16" ↓
FINAL CAMBER	3/4" ↑

*** INCLUDES FUTURE WEARING SURFACE

GRADE 270 STRANDS

	1/2" Ø L.R.
AREA (SQUARE INCHES)	0.153
ULTIMATE STRENGTH (LBS. PER STRAND)	41,300
APPLIED PRESTRESS (LBS. PER STRAND)	30,980

BILL OF MATERIAL FOR ONE CORED SLAB SECTION

BAR	NUMBER	SIZE	TYPE	EXTERIOR UNIT		INTERIOR UNIT	
				LENGTH	WEIGHT	LENGTH	WEIGHT
B1	4	4	STR	22'-0"	59	22'-0"	59
S1	8	4	2	4'-6"	24	4'-6"	24
S2	76	4	2	5'-4"	271	5'-4"	271
* S3	43	5	1	8'-1"	363		
S5	4	4	2	5'-9"	15	5'-9"	15
S6	4	4	2	5'-7"	15	5'-7"	15
S7	4	4	2	5'-5"	14	5'-5"	14
REINFORCING STEEL				LBS.	398		398
* EPOXY COATED REINFORCING STEEL				LBS.	363		
5,000 P.S.I. CONCRETE				CU. YDS.	5.8		5.8
1/2" Ø L.R. STRANDS				No.	15		15

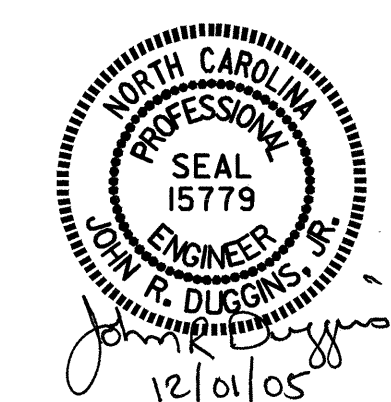
CORED SLABS REQUIRED

UNIT TYPE	NUMBER	LENGTH	TOTAL LENGTH
INTERIOR C.S.	7	42'-4 13/16"	296'-9 11/16"
EXTERIOR C.S.	2	42'-4 13/16"	84'-9 5/8"
TOTAL	9	42'-4 13/16"	381'-7 3/8"

PROJECT NO. B-3663
HENDERSON COUNTY
 STATION: 12+96.30 -L-

SHEET 3 OF 3

STATE OF NORTH CAROLINA
 DEPARTMENT OF TRANSPORTATION
 RALEIGH
 SUPERSTRUCTURE
 3'-0" X 1'-9"
 PRESTRESSED CONCRETE
 CORED SLAB UNIT



ASSEMBLED BY : M. POOLE DATE : 06/04
 CHECKED BY : J. LAMBERT DATE : 06/04
 DRAWN BY : WJH 4/89 REV. 2/6/97 EEM/RGW
 CHECKED BY : FCJ 5/89 REV. 8/16/99 RWW/LES
 REV. 10/17/00 RWW/LES

REVISIONS						SHEET NO.
NO.	BY:	DATE:	NO.	BY:	DATE:	S-6
1			3			TOTAL SHEETS
2			4			22