

**NOTES**

STIRRUPS IN CAP MAY BE SHIFTED AS NECESSARY TO CLEAR #6 DOWELS.

THE LATERAL GUIDE AT EACH END OF CAP IS NOT TO BE POURED UNTIL AFTER THE CORED SLAB UNITS ARE IN PLACE.

PIPE DRAINS MAY BE SHIFTED SLIGHTLY AS NECESSARY TO CLEAR REINFORCING STEEL AND #6 DOWELS (D1).

FOR PIPE DRAINS DETAILS, SEE SHEET 4 OF 4.

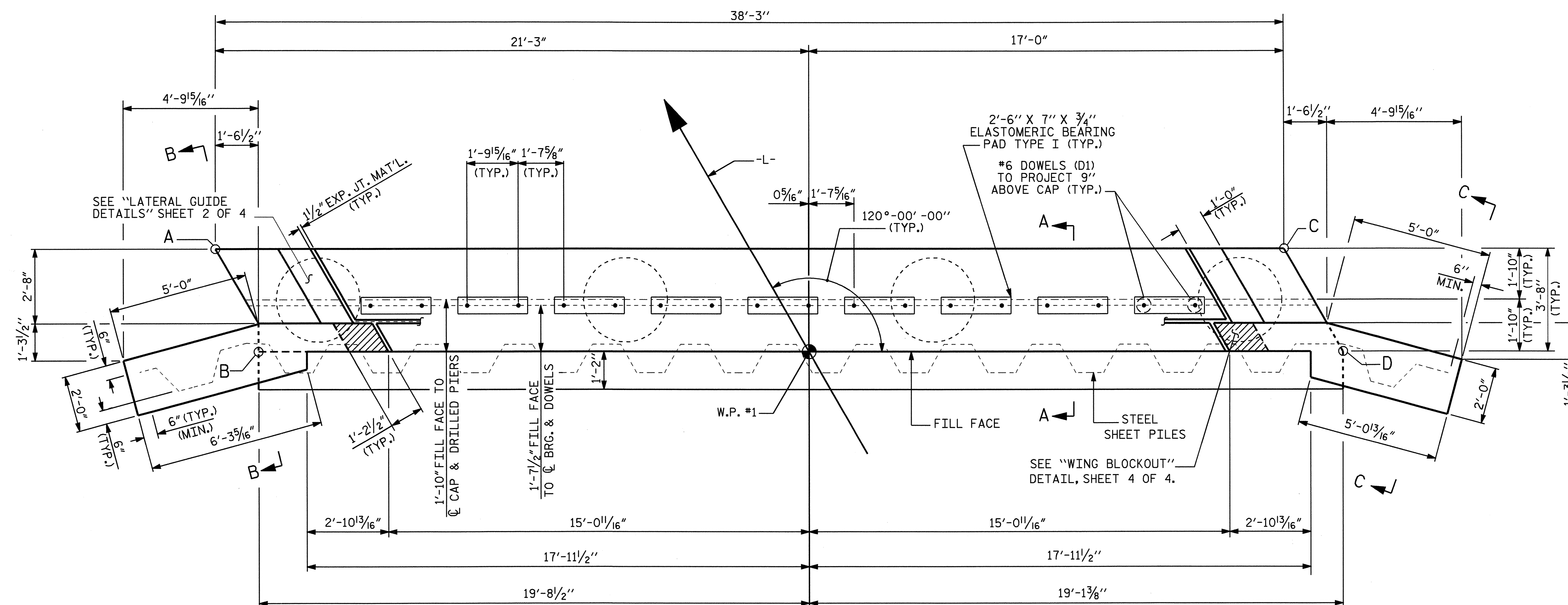
SPLICING OF THE LONGITUDINAL BARS IN THE DRILLED PIER WILL NOT BE PERMITTED.

THE CONTRACTORS ATTENTION IS CALLED TO THE FACT THAT THE LONGITUDINAL REINFORCEMENT FOR THE DRILLED PIERS IS DETAILED WITH 3 FEET OF EXTRA LENGTH.

ALL STEEL IN THE DRILLED PIERS IS INCLUDED IN THE PAY ITEMS FOR "REINFORCING STEEL AND SPIRAL COLUMN REINFORCING STEEL".

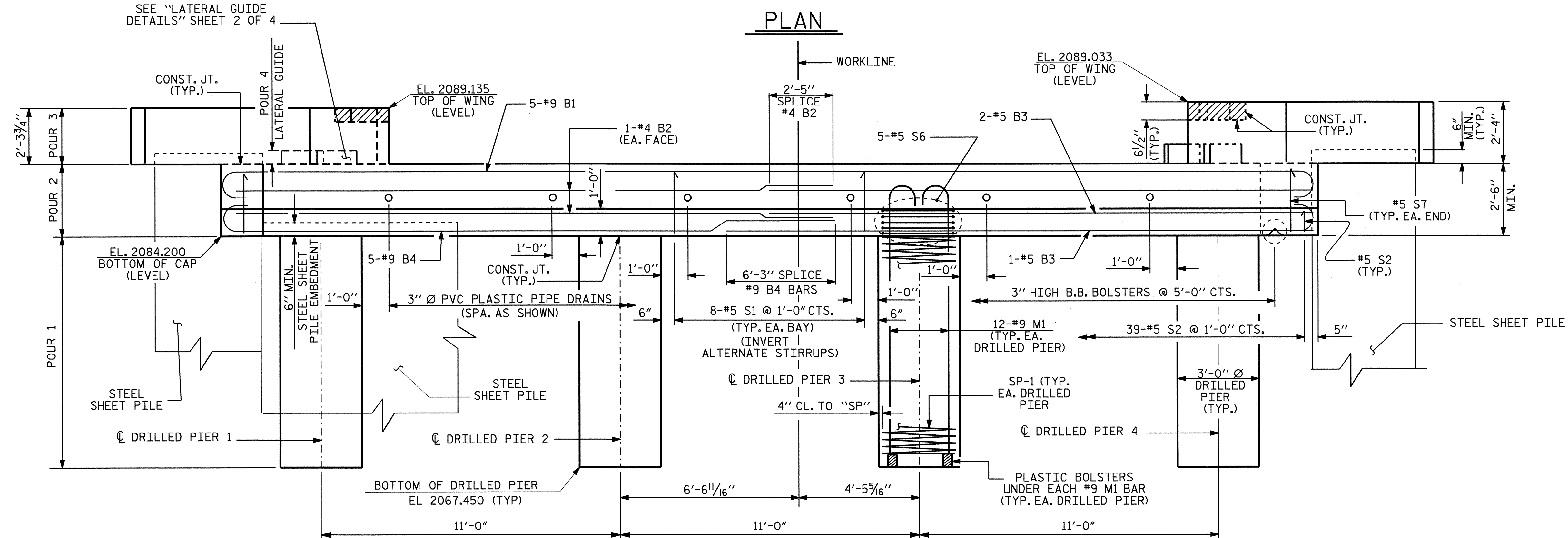
HOOKS ON "M" BARS MAY BE TURNED AS NECESSARY FOR PLACING REINFORCING STEEL.

FOR SECTIONS A-A, B-B AND C-C, SEE SHEET 3 OF 4.



TOP OF CAP	
PT.	ELEV.
A	2086.829
B	2086.825
C	2086.704
D	2086.697

**PLAN**



**ELEVATION**

PROJECT NO. B-3663  
HENDERSON COUNTY  
 STATION: 12+96.30 -L-

SHEET 1 OF 4

STATE OF NORTH CAROLINA  
 DEPARTMENT OF TRANSPORTATION  
 RALEIGH

**SUBSTRUCTURE  
 END BENT No. 1**

REVISIONS						SHEET NO.
NO.	BY:	DATE:	NO.	BY:	DATE:	S-12
1			3			TOTALS
2			4			22

DRAWN BY: M. POOLE DATE: 02/05  
 CHECKED BY: J. R. DUGGINS DATE: 03/05

