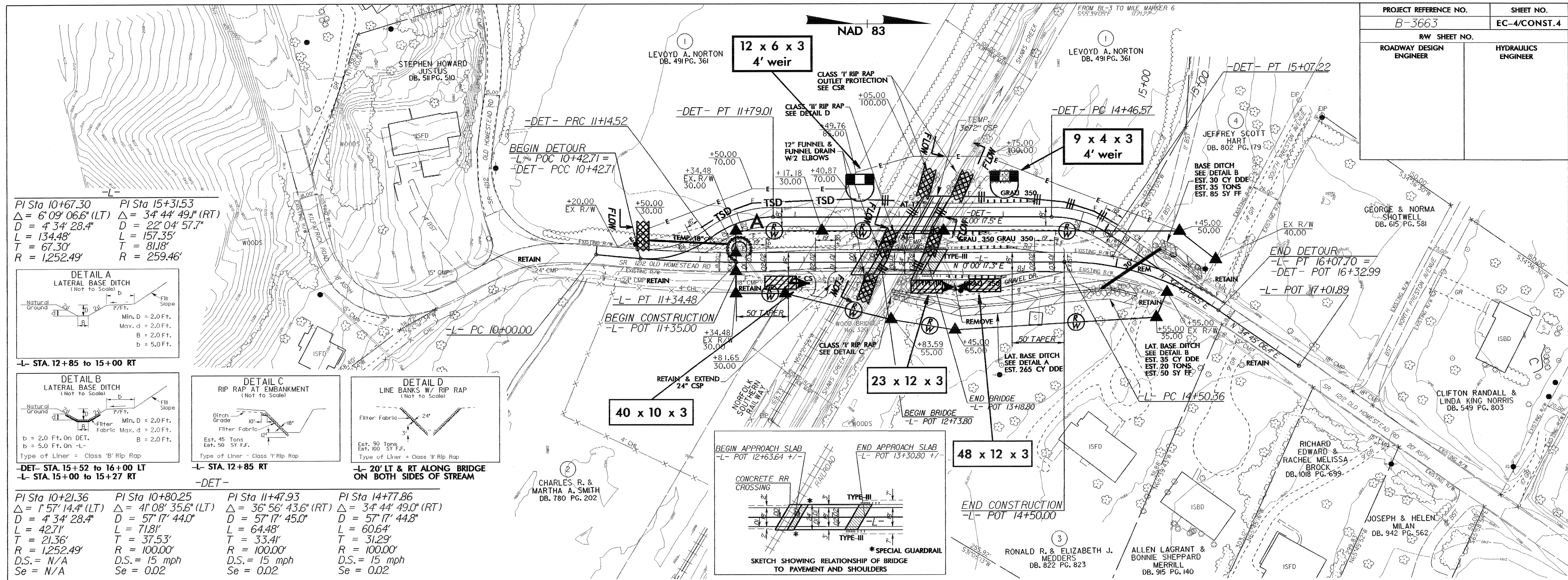
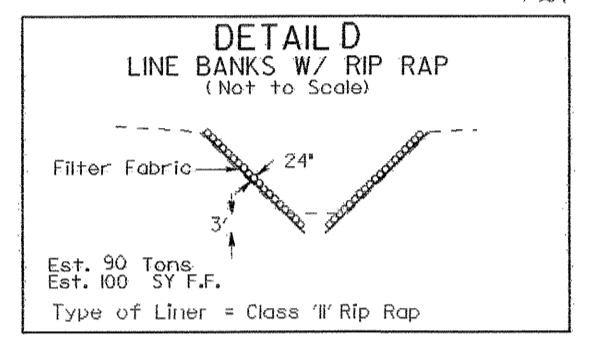
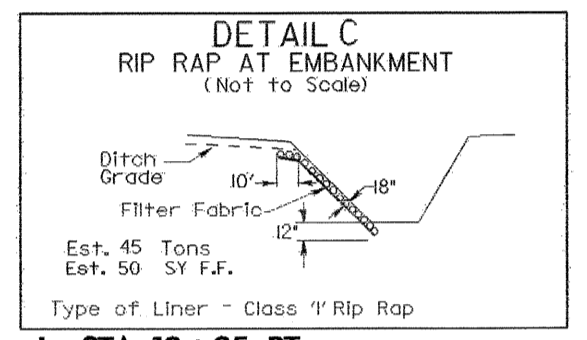
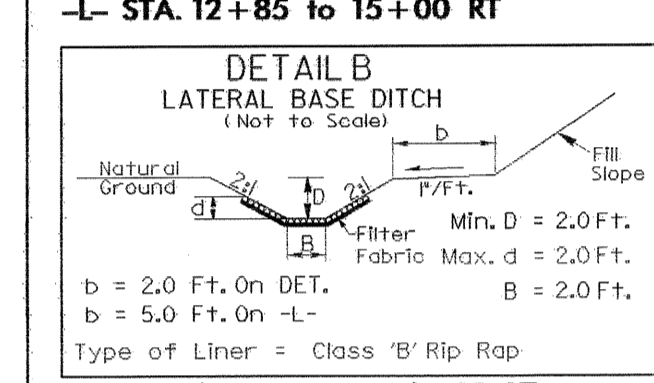
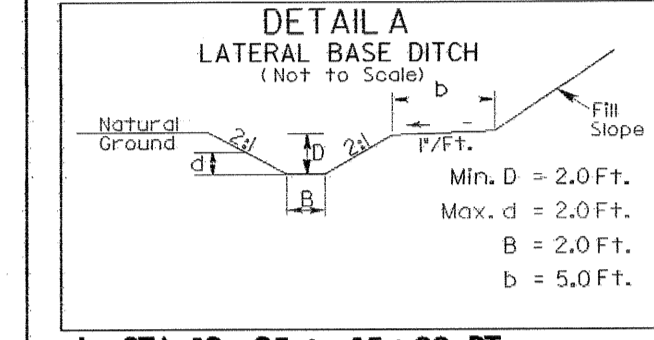


PROJECT REFERENCE NO.	SHEET NO.
B-3663	EC-4/CONST.4
RW SHEET NO.	HYDRAULICS ENGINEER
ROADWAY DESIGN ENGINEER	



PI Sta 10+67.30 PI Sta 15+31.53
 $\Delta = 6^{\circ}09'06.6"$ (LT) $\Delta = 3^{\circ}44'49.1"$ (RT)
 $D = 4^{\circ}34'28.4"$ $D = 22^{\circ}04'57.7"$
 $L = 134.48'$ $L = 157.35'$
 $T = 67.30'$ $T = 81.18'$
 $R = 1,252.49'$ $R = 259.46'$



-L- STA. 12+85 to 15+00 RT
 -DET- STA. 15+52 to 16+00 LT
 -L- STA. 15+00 to 15+27 RT

-L- STA. 12+85 RT
 -L- 20' LT & RT ALONG BRIDGE ON BOTH SIDES OF STREAM

PI Sta 10+21.36 PI Sta 10+80.25 PI Sta 11+47.93 PI Sta 14+77.86
 $\Delta = 1^{\circ}57'14.4"$ (LT) $\Delta = 41^{\circ}08'35.6"$ (LT) $\Delta = 36^{\circ}56'43.6"$ (RT) $\Delta = 3^{\circ}44'49.0"$ (RT)
 $D = 4^{\circ}34'28.4"$ $D = 57^{\circ}17'44.0"$ $D = 57^{\circ}17'45.0"$ $D = 57^{\circ}17'44.8"$
 $L = 42.71'$ $L = 71.81'$ $L = 64.48'$ $L = 60.64'$
 $T = 21.36'$ $T = 37.53'$ $T = 33.41'$ $T = 31.29'$
 $R = 1,252.49'$ $R = 100.00'$ $R = 100.00'$ $R = 100.00'$
 $D.S. = N/A$ $D.S. = 15$ mph $D.S. = 15$ mph $D.S. = 15$ mph
 $Se = N/A$ $Se = 0.02$ $Se = 0.02$ $Se = 0.02$

NOTE: UTILIZE SPECIAL STILLING BASING AND TEMPORARY ROCK SEDIMENT DAM TYPE - B AS STILLING BASIN WHERE APPLICABLE.

CLEARING AND GRUBBING EROSION CONTROL FOR CONSTRUCTION SHEET 4

NOTE: PLACE TEMPORARY ROCK SEDIMENT DAMS TYPE - B AND TEMPORARY ROCK SILT CHECKS TYPE - A AT DRAINAGE OUTLETS.

