

B-3662 SURVEY CONTROL SHEET

NOTES

THE CONTROL DATA FOR THIS PROJECT CAN BE FOUND ELECTRONICALLY BY SELECTING PROJECT CONTROL DATA AT:

- 1. HTTP:\WWW.DOH.DOT.STATE.NC.US/PRECONSTRUCT/HIGHWAY/LOCATION/PROJECT/
FILE: B3662_LS_CONTROL_041130.TXT
- IF FURTHER INFORMATION IS NEEDED, PLEASE CONTACT THE LOCATION AND SURVEYS UNIT.
- SITE CALIBRATION INFORMATION HAS NOT BEEN PROVIDED FOR THIS PROJECT.

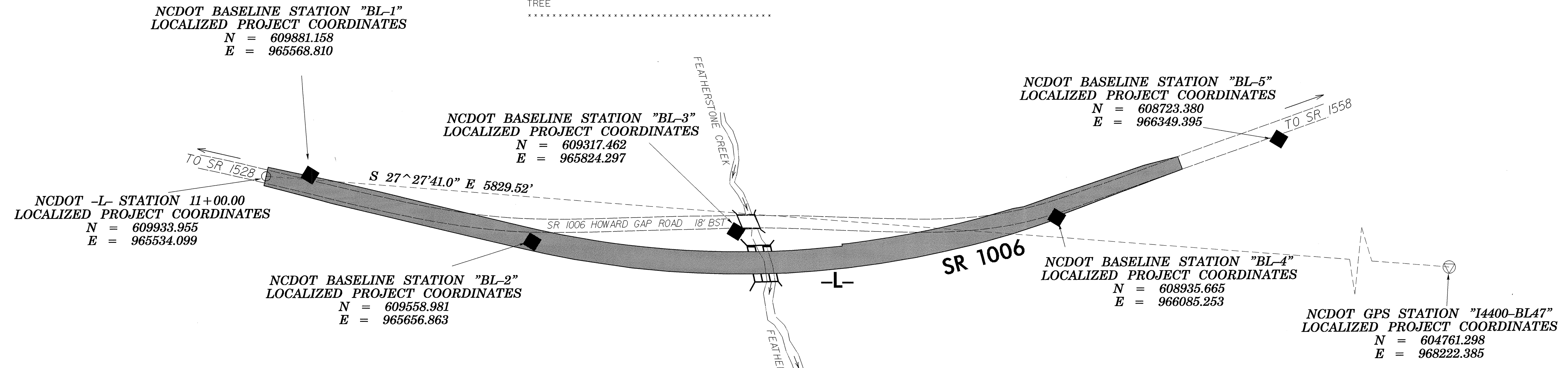
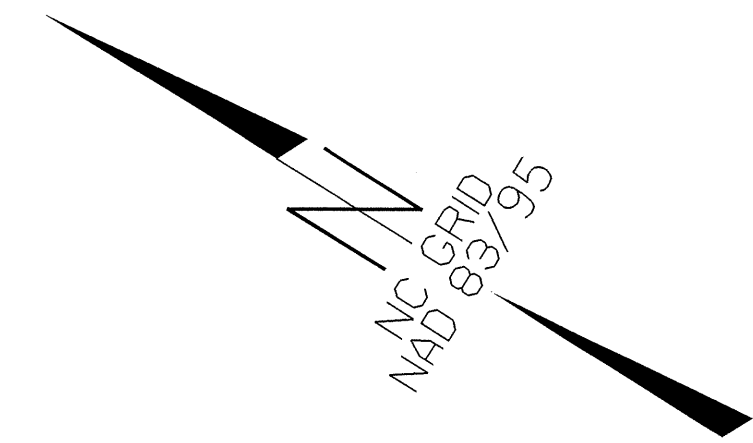
CONTROL DATA

BL	POINT	DESC.	NORTH	EAST	ELEVATION	L STATION	OFFSET
1		BL-1	609881.1580	965568.8100	2090.46	11+61.10	16.09 LT
2		BL-2	609558.9810	965656.8630	2076.47	14+94.52	3.12 RT
3		BL-3	609317.4620	965824.2970	2068.70	17+89.63	45.15 LT
4		BL-4	608935.6650	966085.2530	2077.96	22+56.29	13.27 RT
5		BL-5	608723.3800	966349.3950	2083.53	25+95.09	16.05 RT

.....
 BM1 ELEVATION = 2095.95
 N 609802 E 965546
 L STATION 12+29 31 RIGHT
 8 INCH SPIKE IN BASE OF 21 INCH PINE TREE

 BM2 ELEVATION = 2075.45
 N 609189 E 965941
 L STATION 19+69 66 LEFT
 8 INCH SPIKE IN BASE OF 21 INCH PINE TREE

 BM3 ELEVATION = 2083.90
 N 608671 E 966332
 L STATION 26+14 68 RIGHT
 8 INCH SPIKE IN BASE OF TRIPLE LOCUST TREE



DATUM DESCRIPTION

THE LOCALIZED COORDINATE SYSTEM DEVELOPED FOR THIS PROJECT IS BASED ON THE STATE PLANE COORDINATES ESTABLISHED BY NCDOT FOR MONUMENT "I-4400 BL-47" WITH NAD 1983/95 STATE PLANE GRID COORDINATES OF NORTHING: 604761.2980(ft) EASTING: 968222.3850(ft) THE AVERAGE COMBINED GRID FACTOR USED ON THIS PROJECT (GROUND TO GRID) IS: .99977884 THE N.C. LAMBERT GRID BEARING AND LOCALIZED HORIZONTAL GROUND DISTANCE FROM "I-4400 BL-47" TO -L- STATION 11+00 IS N27°27'41.00"W 5829.52'

ALL LINEAR DIMENSIONS ARE LOCALIZED HORIZONTAL DISTANCES VERTICAL DATUM USED IS NAVD 88

◆ INDICATES GEODETIC CONTROL MONUMENTS USED OR SET FOR HORIZONTAL PROJECT CONTROL BY THE NCDOT LOCATION AND SURVEYS UNIT.

NOTE: DRAWING NOT TO SCALE

18-JAN-2005 15:28
 R:\Roadway\Projects\B3662_1\1s_1c_041130.dgn
 S:\ashley