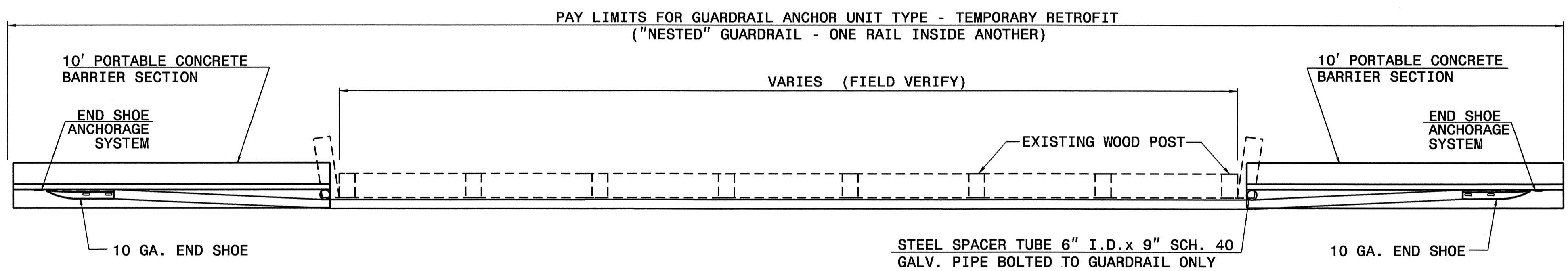
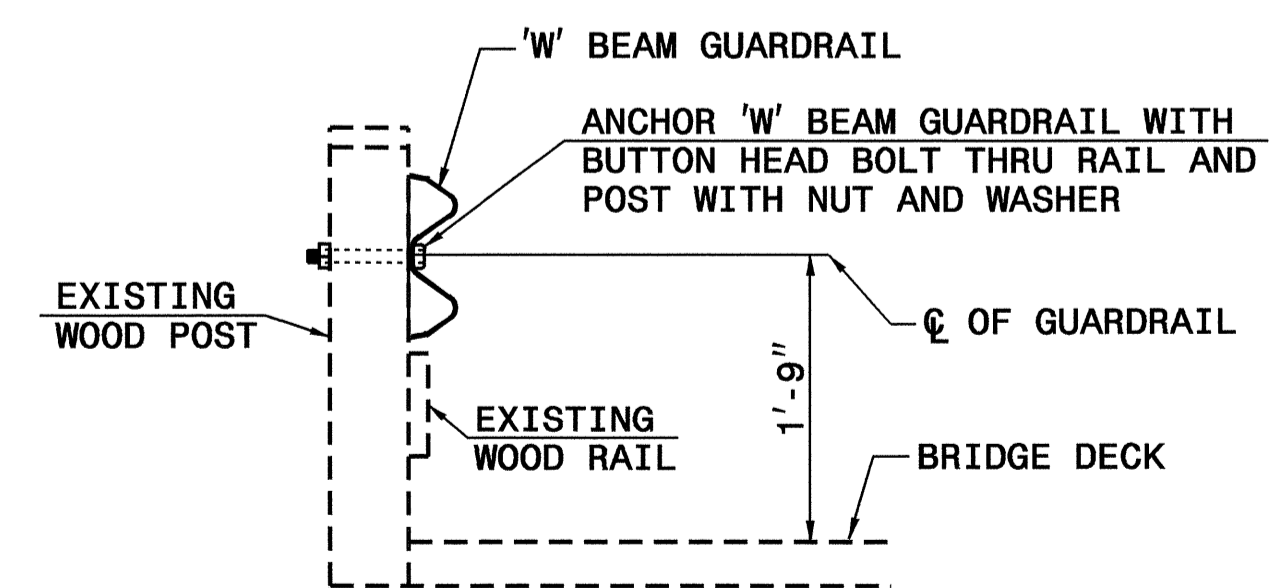


ELEVATION VIEW



PLAN VIEW



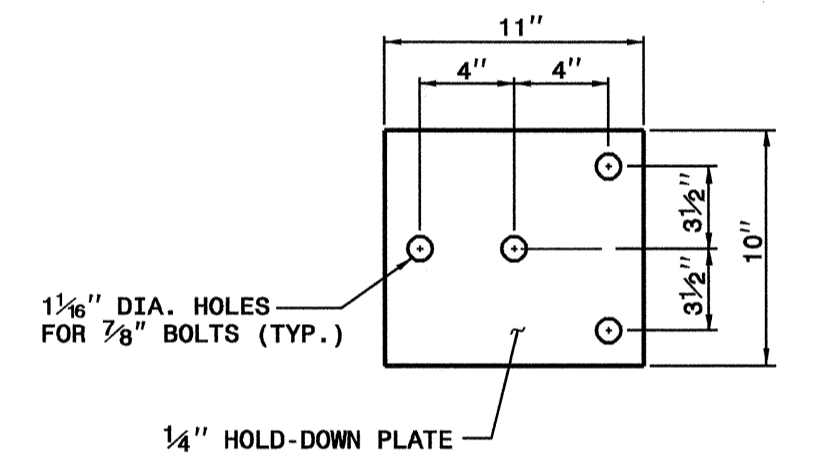
**SECTION VIEW
GUARDRAIL ATTACHMENT
TO WOOD POST**

NOTES FOR 4 BOLT HOLD DOWN PLATE

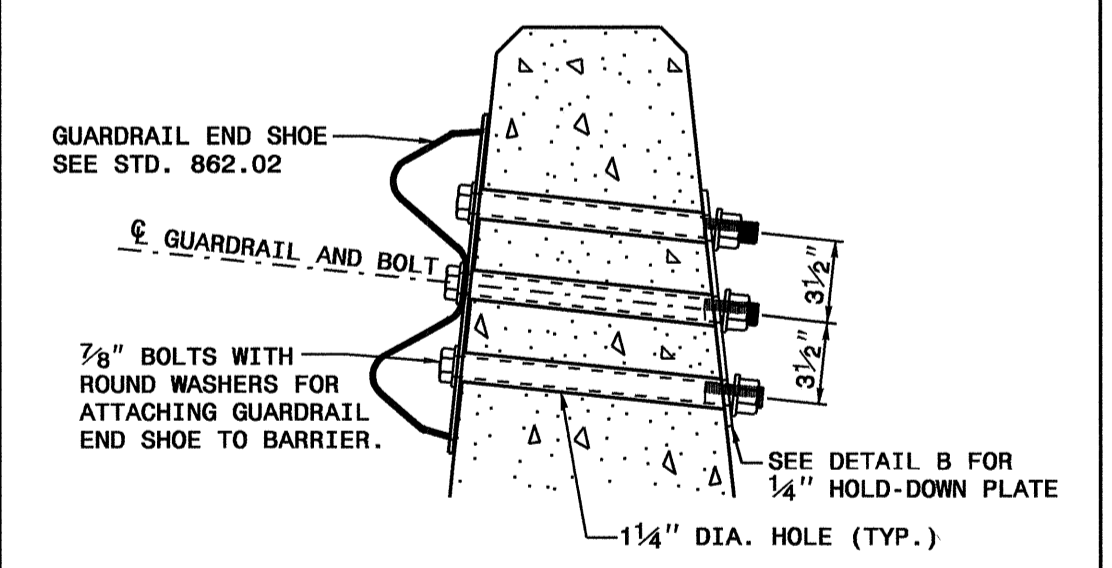
THE GUARDRAIL ANCHOR ASSEMBLY SHALL CONSIST OF A 1/4" HOLD DOWN PLATE AND 4 - 3/8" DIA. BOLTS WITH NUTS AND WASHERS.

THE HOLD-DOWN PLATE SHALL CONFORM TO AASHTO M270 GRADE 36. AFTER FABRICATION, THE HOLD-DOWN PLATE SHALL BE HOT-DIP GALVANIZED IN ACCORDANCE WITH AASHTO M111.

AFTER INSTALLATION, THE EXPOSED THREAD OF THE BOLT SHALL BE BURIED WITH A SHARP POINTED TOOL. THE 1/4" DIA. HOLES SHALL BE FORMED OR DRILLED WITH A CORE BIT. IMPACT TOOLS WILL NOT BE PERMITTED. ANY CONCRETE DAMAGED BY THIS WORK SHALL BE REPAIRED TO THE SATISFACTION OF THE ENGINEER.



4 BOLT HOLD DOWN PLATE



**PART SECTION
OF BARRIER OR RAIL
THRU END SHOE SECTION AND
4 BOLT HOLD DOWN PLATE**



PROJECT SERVICES UNIT STANDARDS AND SPECIAL DESIGN Office 919-250-4128 FAX 919-250-4119	
DETAIL OF GUARDRAIL ANCHOR UNIT TYPE - TEMPORARY RETROFIT	
ORIGINAL BY: E.E. WARD	DATE: 04-05
MODIFIED BY: <i>Joel S. Howerton</i>	DATE: 4/7/05
CHECKED BY: <i>Joel S. Howerton</i>	DATE: 4/7/05
FILE SPEC: usr/details/stand/862stds/anc.dgn	

06-APR-2005 14:50 S:\Contracts\Special_Details\vericwar\d\usr\details\stand\862stds\anc.dgn ericward AT P5222293