

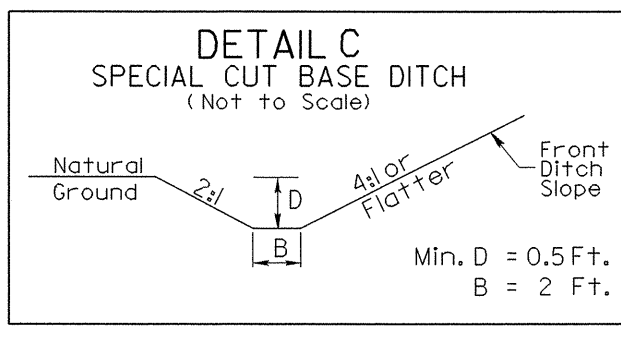
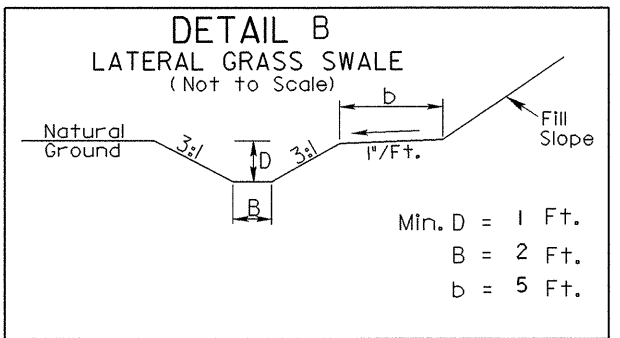
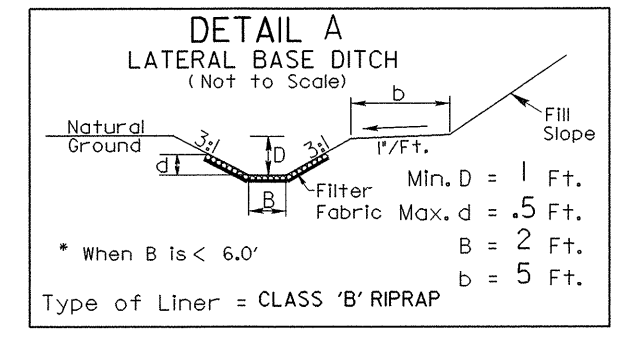
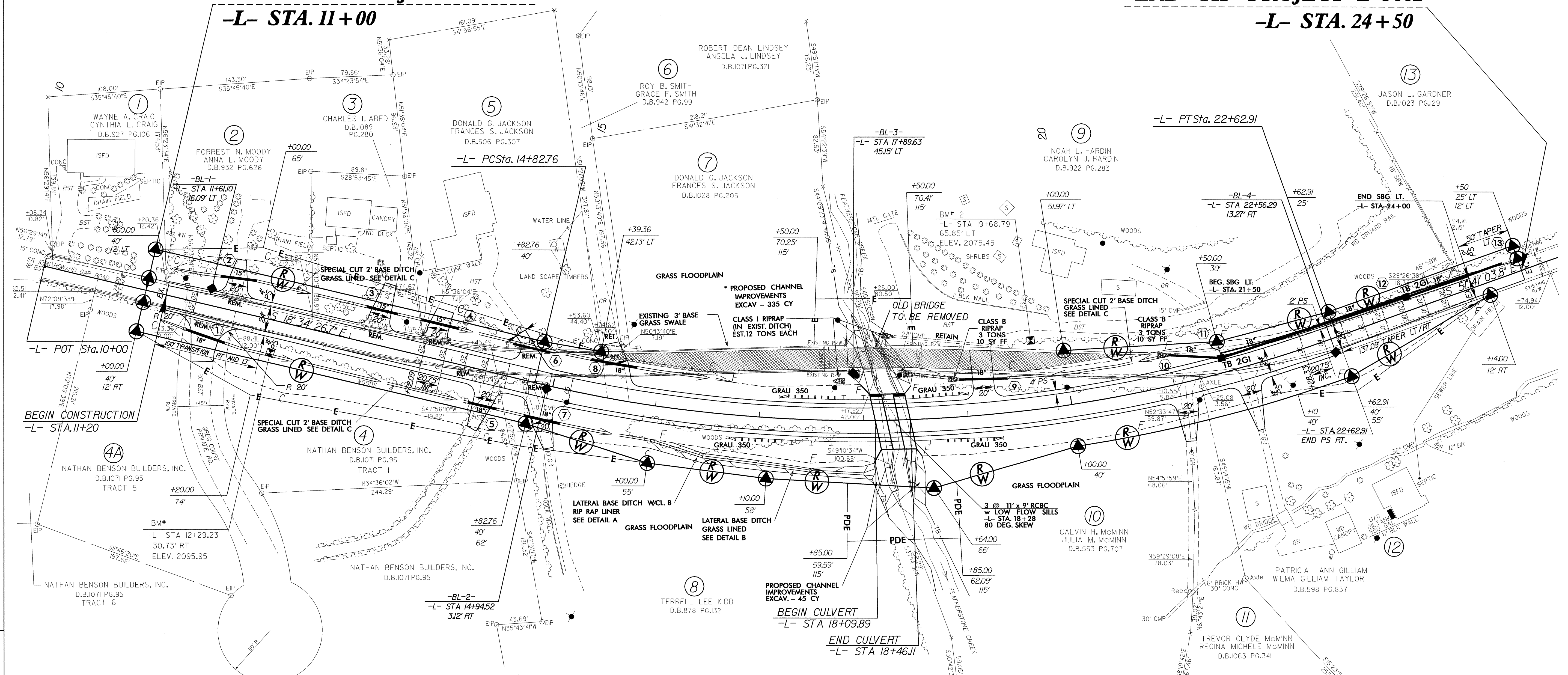
-L-

PI Sta 18+84.07
 $\Delta = 33^{\circ} 06' 37.1''$ (LT)
 $D = 4' 14' 38.9''$
 $L = 780.14'$
 $T = 401.30'$
 $R = 1,350.00'$
 SE = SEE PLAN

OBLITERATE EXISTING PAVEMENT

BEGIN TIP PROJECT B-3662
-L- STA. 11+00

END TIP PROJECT B-3662
-L- STA. 24+50



* NOTE - CHANNEL IMPROVEMENTS INCLUDE REMOVAL OF EXISTING BRIDGE AND ROADWAY EMBANKMENT UPSTREAM OF RCBC

NOTES: PAVE ALL DRIVES TO PROPOSED R/W LINE.
 ALL DRIVES HAVE 10' RADII UNLESS SHOWN OTHERWISE.
 FOR PROFILE OF -L- SEE SHEET NO.5
 FOR CULVERT DESIGN SEE SHEETS C-1 TO C-

REVISIONS

03-AUG-2005 08:59
 C:\p001\p001\B3662\04.dwg
 USER:RAMEL