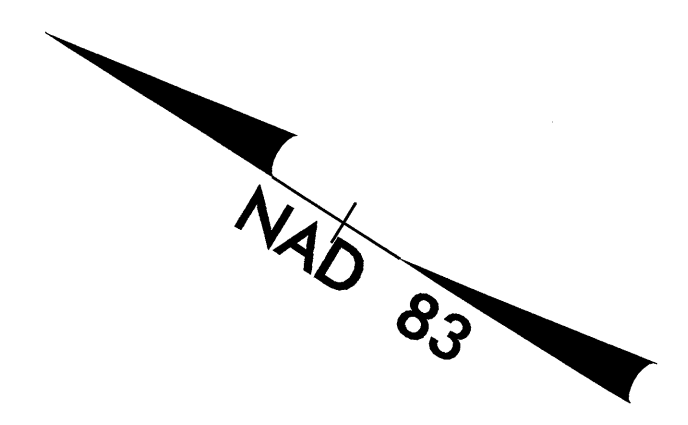


PROJECT REFERENCE NO. B-3662	SHEET NO. EC-6/CONST.4
RW SHEET NO.	
ROADWAY DESIGN ENGINEER	HYDRAULICS ENGINEER



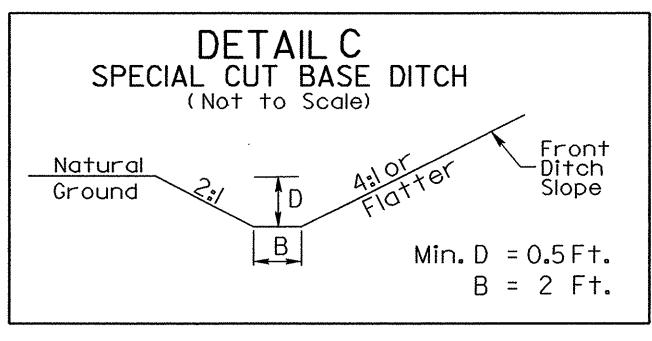
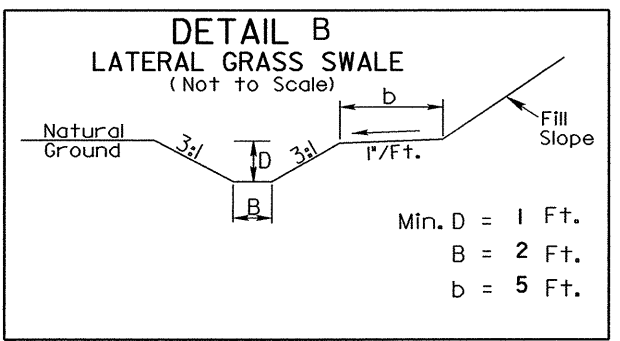
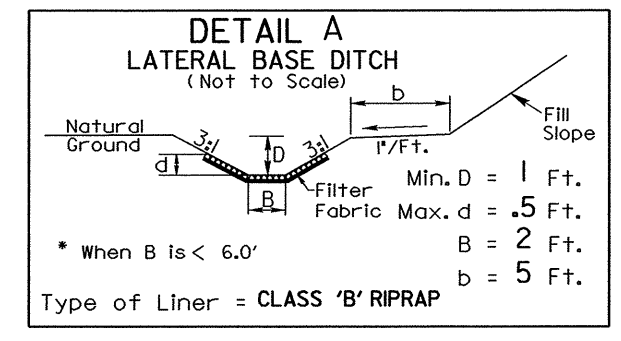
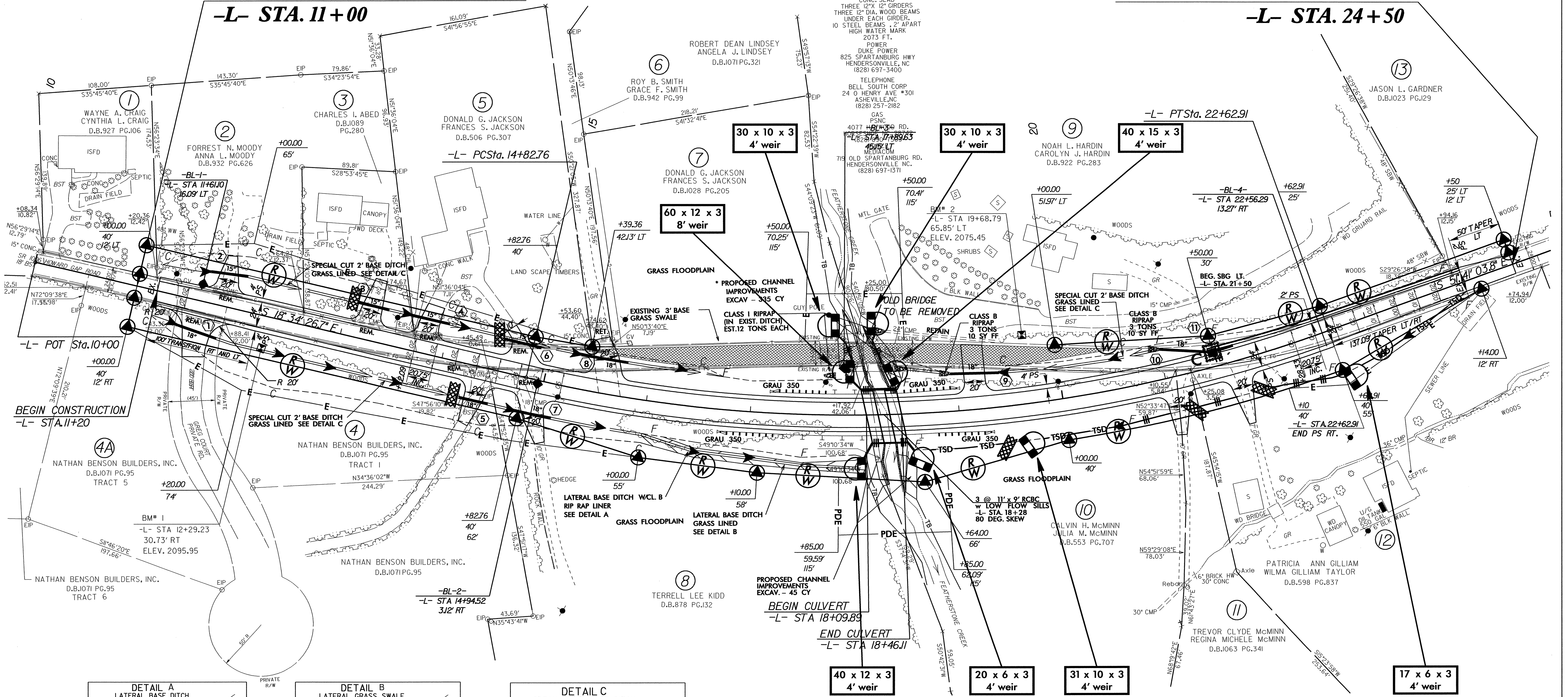
NOTE:
UTILIZE TEMPORARY ROCK SEDIMENT DAM TYPE - B AS STILLING BASIN WHERE APPLICABLE.

-L-
PI Sta 18+84.07
Δ = 33° 06' 37.1" (LT)
D = 414' 38.9"
L = 780.14'
T = 401.30'
R = 1,350.00'
SE = SEE PLAN

OBLITERATE EXISTING PAVEMENT

BEGIN TIP PROJECT B-3662
-L- STA. 11+00

END TIP PROJECT B-3662
-L- STA. 24+50



* NOTE - CHANNEL IMPROVEMENTS INCLUDE REMOVAL OF EXISTING BRIDGE AND ROADWAY EMBANKMENT UPSTREAM OF RCBC

NOTES: PAVE ALL DRIVES TO PROPOSED R/W LINE.
ALL DRIVES HAVE 10' RADII UNLESS SHOWN OTHERWISE.
FOR PROFILE OF -L- SEE SHEET NO.5
FOR CULVERT DESIGN SEE SHEETS C-1 TO C-

-L- STA 16+00 TO 17+00 RT 25 DDE
EST. 45 TONS OF CL. B RIP RAP

-L- STA 17+00 TO 18+10 RT 45 DDE

-L- STA 11+20 TO 16+70 LT
-L- STA 11+20 TO 16+00 RT
-L- STA 18+50 TO 21+00 LT
USE -L- GRADE FOR DETAIL "C"