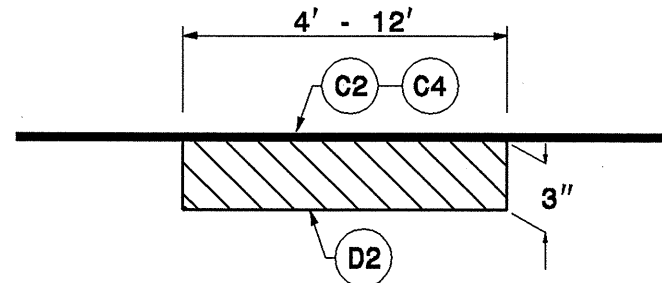


STATE	PROJECT NO.	SHEET NO.	TOTAL SHEETS
N.C.	7CR.10411.10, ETC	18	24

7CR.10411.10, 7CR.20411.10, 7CR.304108.10,
7CR.304110.10, 7CR.304112.10,

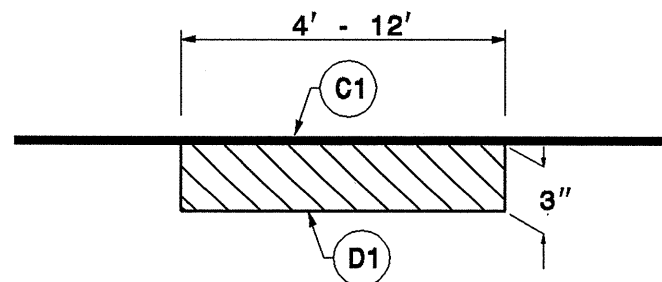
MILLING DETAIL 1



MILL EXISTING ASPHALT PAVEMENT 3" IN DEPTH, AT LOCATIONS AS DIRECTED BY THE ENGINEER.

- NOTE:**
TO BE USED IN CONJUNCTION WITH
- TS. NO. 7, 8, 9, 10 ON MAP 6
 - TS. NO. 18, 19 ON MAP 12
 - TS. NO. 18, 19, 20, 21, 22 ON MAP 13
 - TS. NO. 18, 20 ON MAP 14
 - TS. NO. 19, 21 ON MAP 15
 - TS. NO. 18, 19, 21 ON MAP 20
 - TS. NO. 4, 6 ON MAP 21
 - TS. NO. 12 ON MAP 23
 - TS. NO. 18, 24 ON MAP 24
 - TS. NO. 18, 25 ON MAP 26
 - TS. NO. 18, 24, 26 ON MAP 28
 - TS. NO. 18, 29 ON MAP 30
 - TS. NO. 18 ON MAPS 32, 37, 38

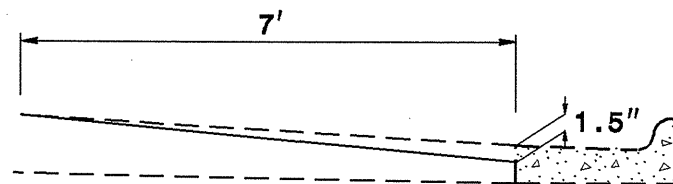
MILLING DETAIL 2



MILL EXISTING ASPHALT PAVEMENT 3" IN DEPTH, AT LOCATIONS AS DIRECTED BY THE ENGINEER.

- NOTE:**
TO BE USED IN CONJUNCTION WITH
- TS. NO. 2, 14, 15, 16, 17 ON MAP 11
 - TS. NO. 14 ON MAPS 16, 17
 - TS. NO. 2 ON MAP 18
 - TS. NO. 23 ON MAP 22
 - TS. NO. 2, 15 ON MAP 40

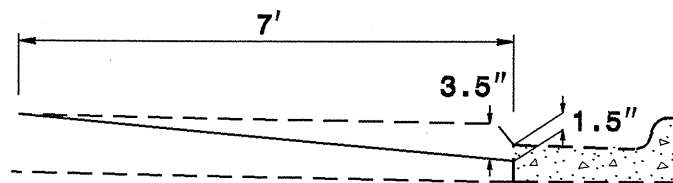
MILLING DETAIL 3



MILL EXISTING ASPHALT PAVEMENT 0-1.5" AT LOCATIONS AS DIRECTED BY THE ENGINEER

- NOTE:**
TO BE USED IN CONJUNCTION WITH
- TS. NO. 14, 15, 16 ON MAP 11
 - TS. NO. 19 ON MAP 12
 - TS. NO. 19, 20, 21, 22 ON MAP 13
 - TS. NO. 20 ON MAP 14
 - TS. NO. 19, 21 ON MAPS 15, 20
 - TS. NO. 14 ON MAPS 16, 17
 - TS. NO. 23 ON MAP 22
 - TS. NO. 24 ON MAP 24
 - TS. NO. 25 ON MAP 26
 - TS. NO. 24, 26 ON MAP 28
 - TS. NO. 15 ON MAP 40

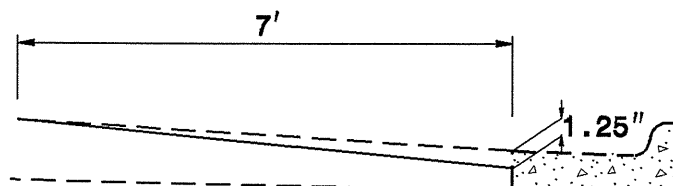
MILLING DETAIL 4



MILL EXISTING ASPHALT PAVEMENT 0-3.5" AT LOCATIONS AS DIRECTED BY THE ENGINEER

- NOTE:**
TO BE USED IN CONJUNCTION WITH
- TS. NO. 14 ON MAP 17
 - TS. NO. 14, 15 ON MAP 11

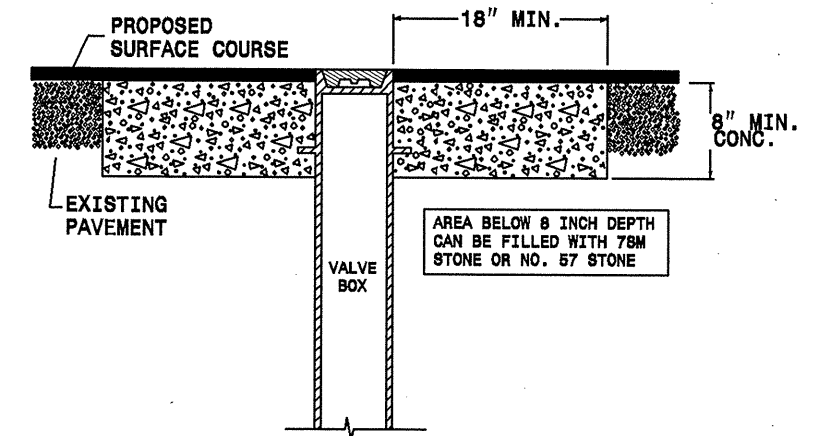
MILLING DETAIL 5



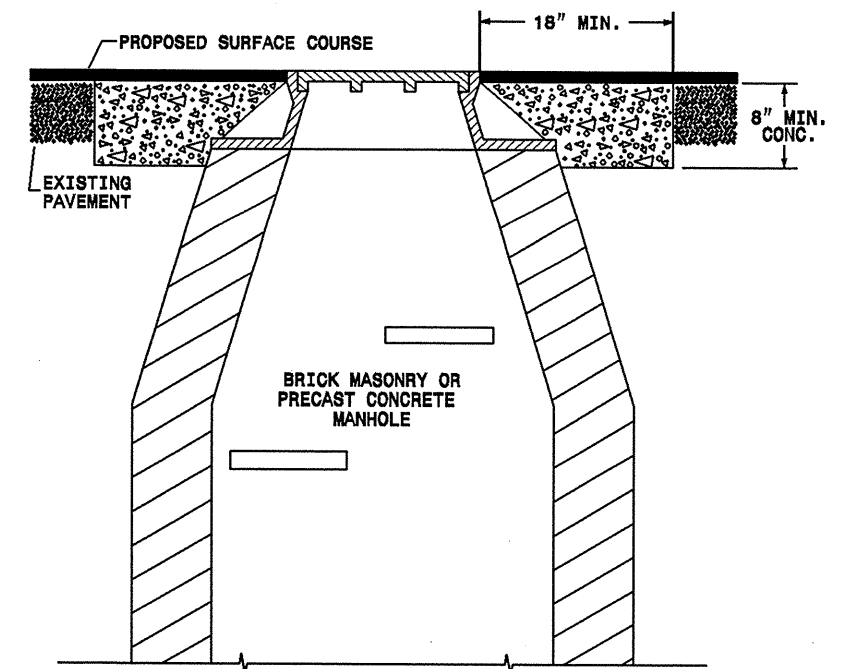
MILL EXISTING ASPHALT PAVEMENT 0-1.25" AT LOCATIONS AS DIRECTED BY THE ENGINEER

- NOTE:**
TO BE USED IN CONJUNCTION WITH
- TS. NO. 27 ON MAP 41

STANDARD CONCRETE ENCASEMENT FOR MANHOLE & VALVE CASTINGS IN PAVEMENT DETAIL DRAWING NO. 840D55



USE RAPID SET GROUT, MORTAR, OR CONCRETE
CLASS B CONCRETE MAY BE USED WHEN ADJUSTMENTS
ARE NOT IN THE TRAVEL LANE.



- NOTES:**
1. MORTAR SHALL BE MIXED TO NCDOT SPECIFICATIONS.
 2. ALL FAULTY EXISTING BRICKWORK TO BE REMOVED AND REPLACED WITH NEW BRICK MASONRY.
 3. EXCAVATION FOR THE ADJUSTMENT SHALL BE SHEER CUT ON ALL SIDES.
 4. RAPID SET GROUT, MORTAR, OR CONCRETE SHALL BE USED

5/28/99