

5/28/99

STATE	PROJECT NO.	SHEET NO.	TOTAL SHEETS
N.C.	7CR.10411.10, ETC.	19	24

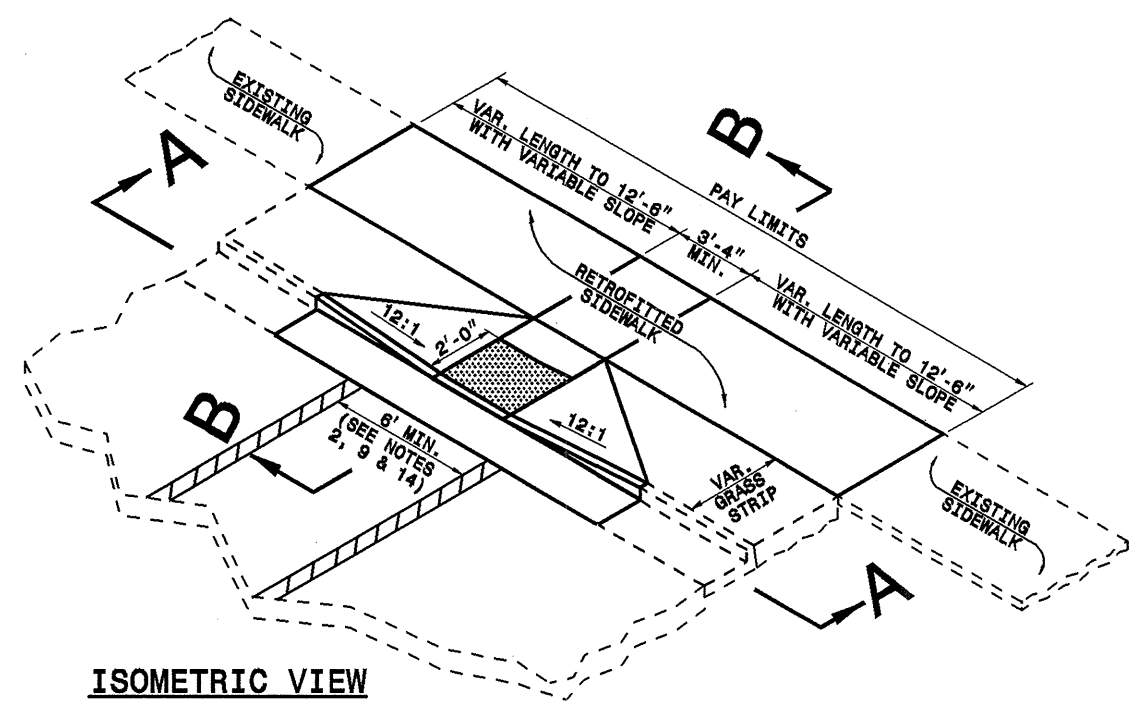
7CR.10411.10, 7CR.20411.10, 7CR.304108.10,  
7CR.304110.10, 7CR.304112.10

STATE OF NORTH CAROLINA  
DEPT. OF TRANSPORTATION  
DIVISION OF HIGHWAYS  
RALEIGH, N.C.

ENGLISH DETAIL DRAWING FOR  
**WHEELCHAIR RAMP AND EXISTING SIDEWALK WITH GRASS STRIP**  
CURB CUT

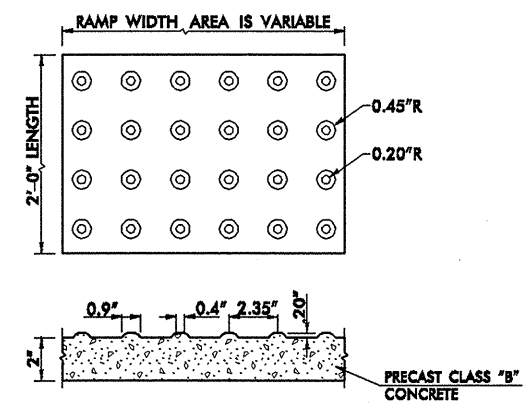
STATE OF NORTH CAROLINA  
DEPT. OF TRANSPORTATION  
DIVISION OF HIGHWAYS  
RALEIGH, N.C.

ENGLISH DETAIL DRAWING FOR  
**WHEELCHAIR RAMP AND EXISTING SIDEWALK WITH GRASS STRIP**  
CURB CUT

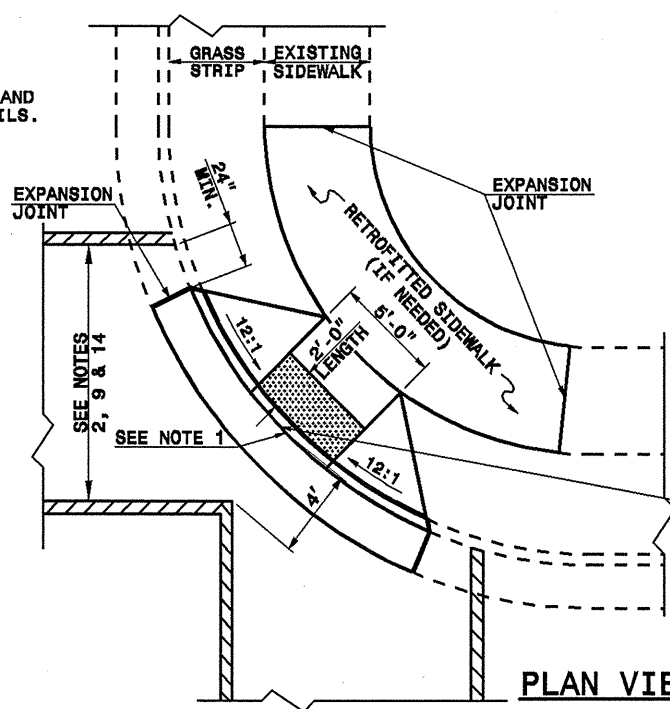


**ISOMETRIC VIEW**

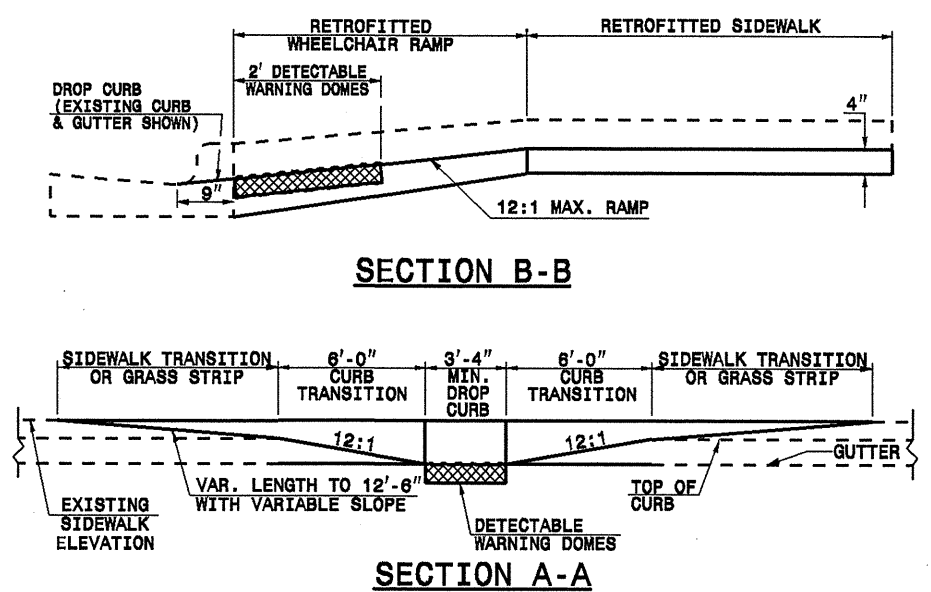
1. DETECTABLE WARNING DOMES SHALL COVER 2'-0" LENGTH AND FULL WIDTH OF THE RAMP FLOOR AS SHOWN ON THE DETAILS.
2. THE RAMP MAY BE YELLOW IN COLOR OR ANY COLOR WITH A 70% CONTRAST RATIO.



**DETECTABLE WARNING DOMES**

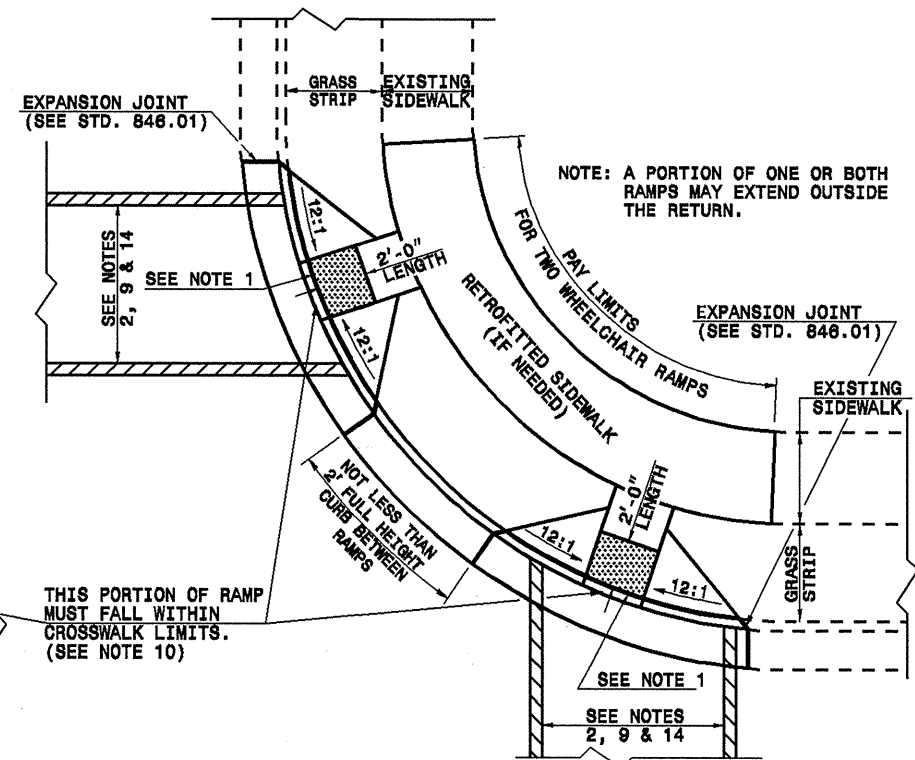


**PLAN VIEW**  
DIAGONAL RAMP  
MAX. 25' RADII  
(60" MIN. FLOOR WIDTH)



**SECTION B-B**

**SECTION A-A**



**PLAN VIEW**  
DUAL RAMPS  
ANY RADII  
(40" MIN. FLOOR WIDTH)