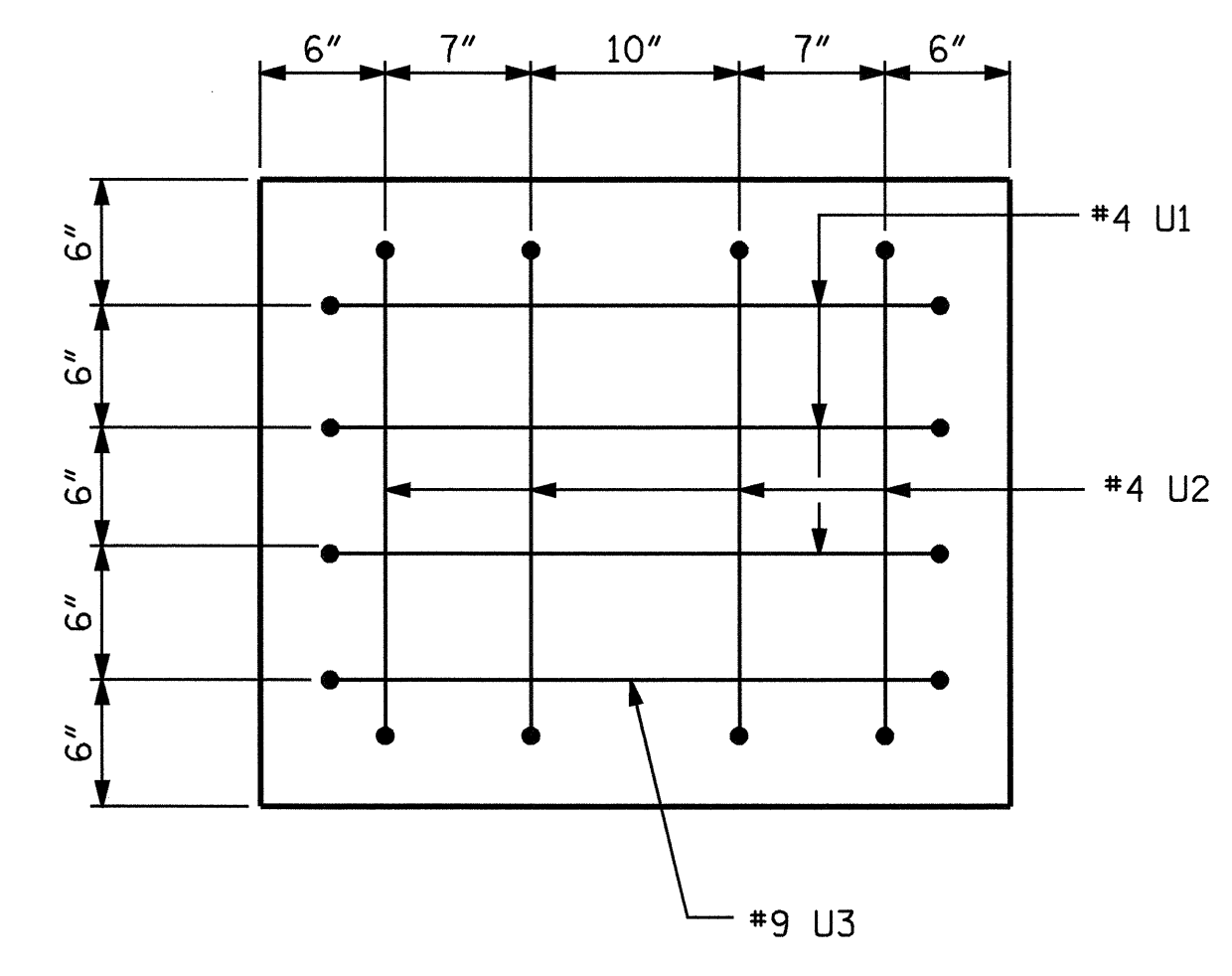
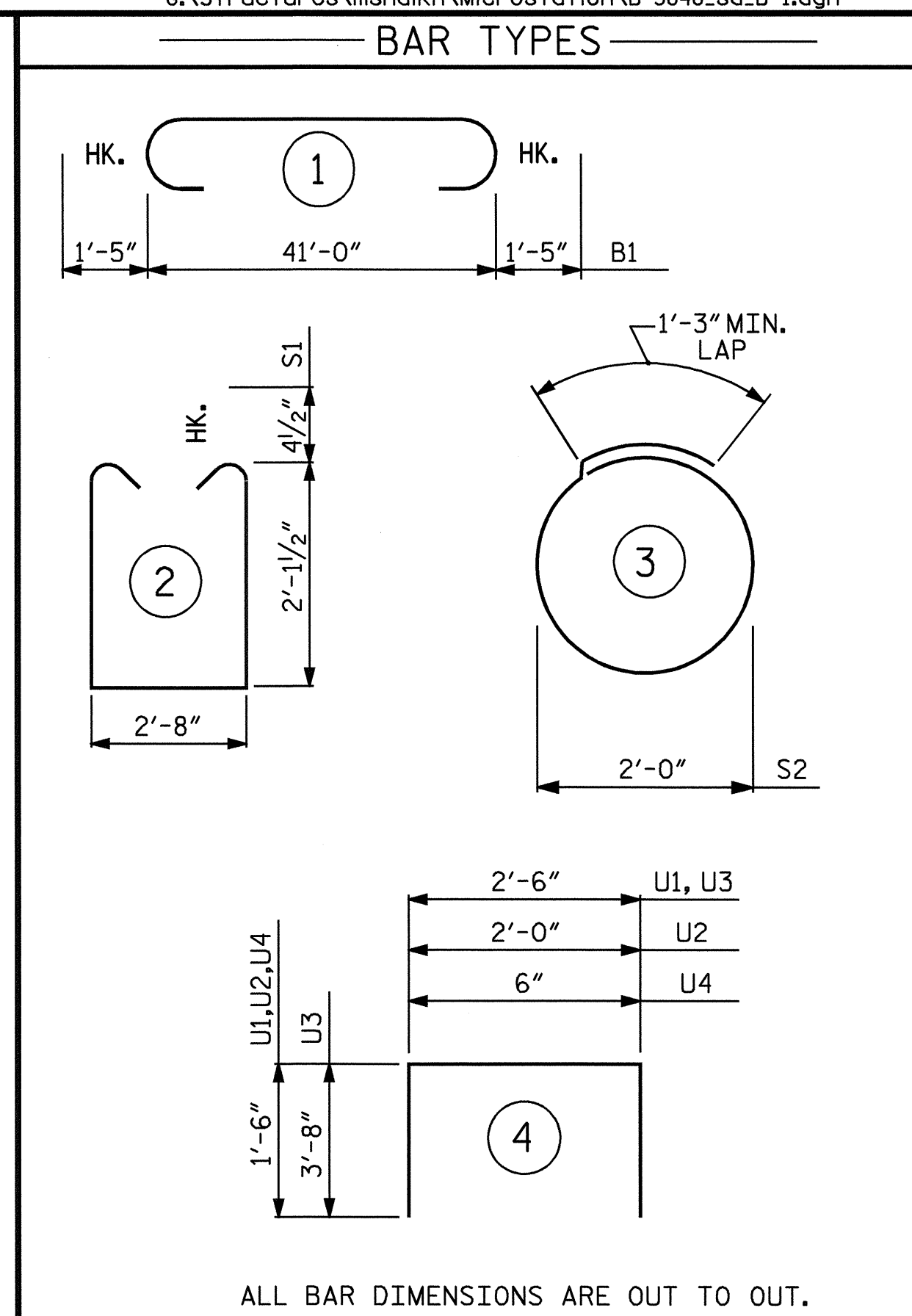


SECTION A-A



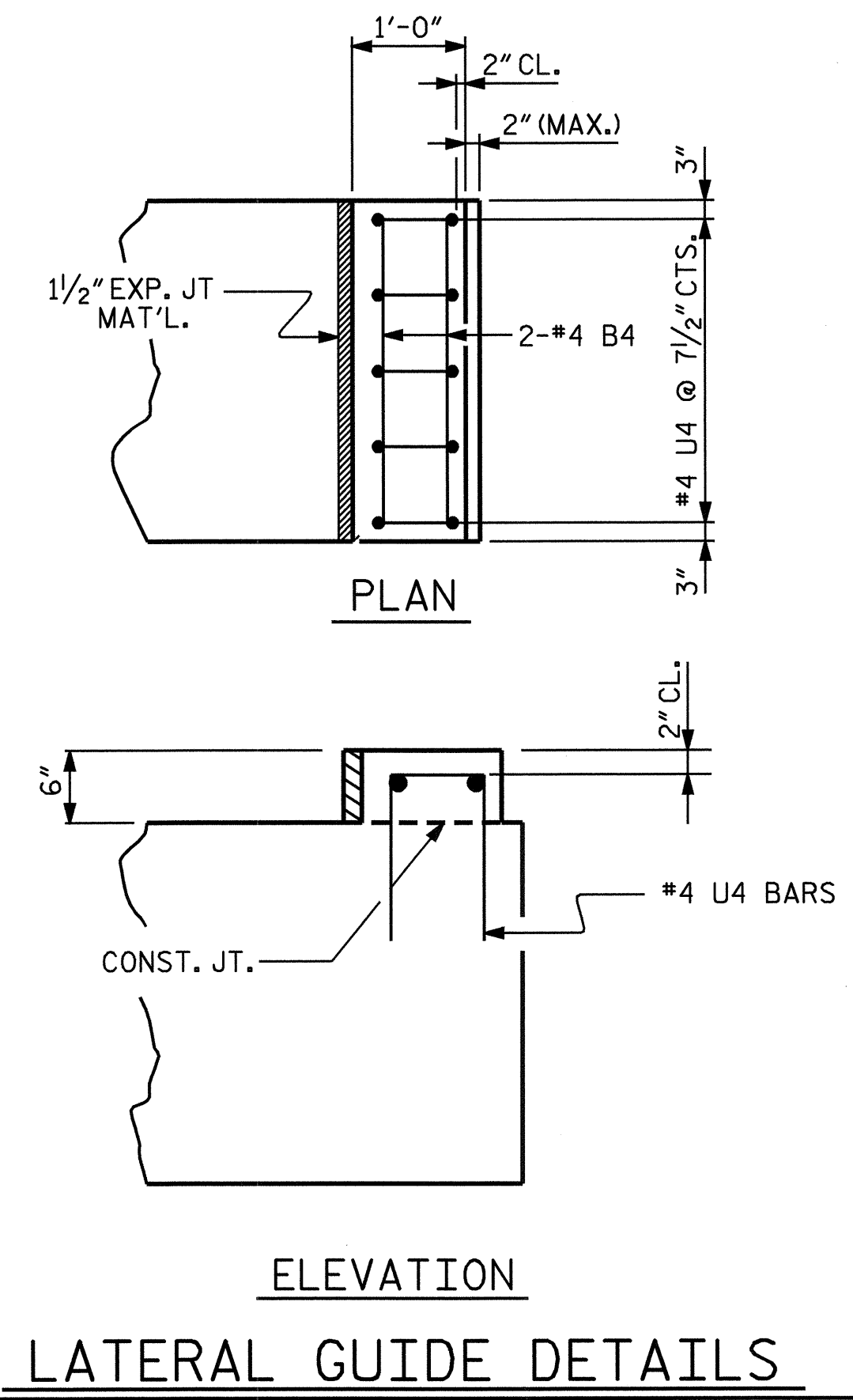
VIEW X-X

2" MIN. CONCRETE COVER FROM END OF CAP REQUIRED FOR ALL #4U1 AND #4U2 BARS.

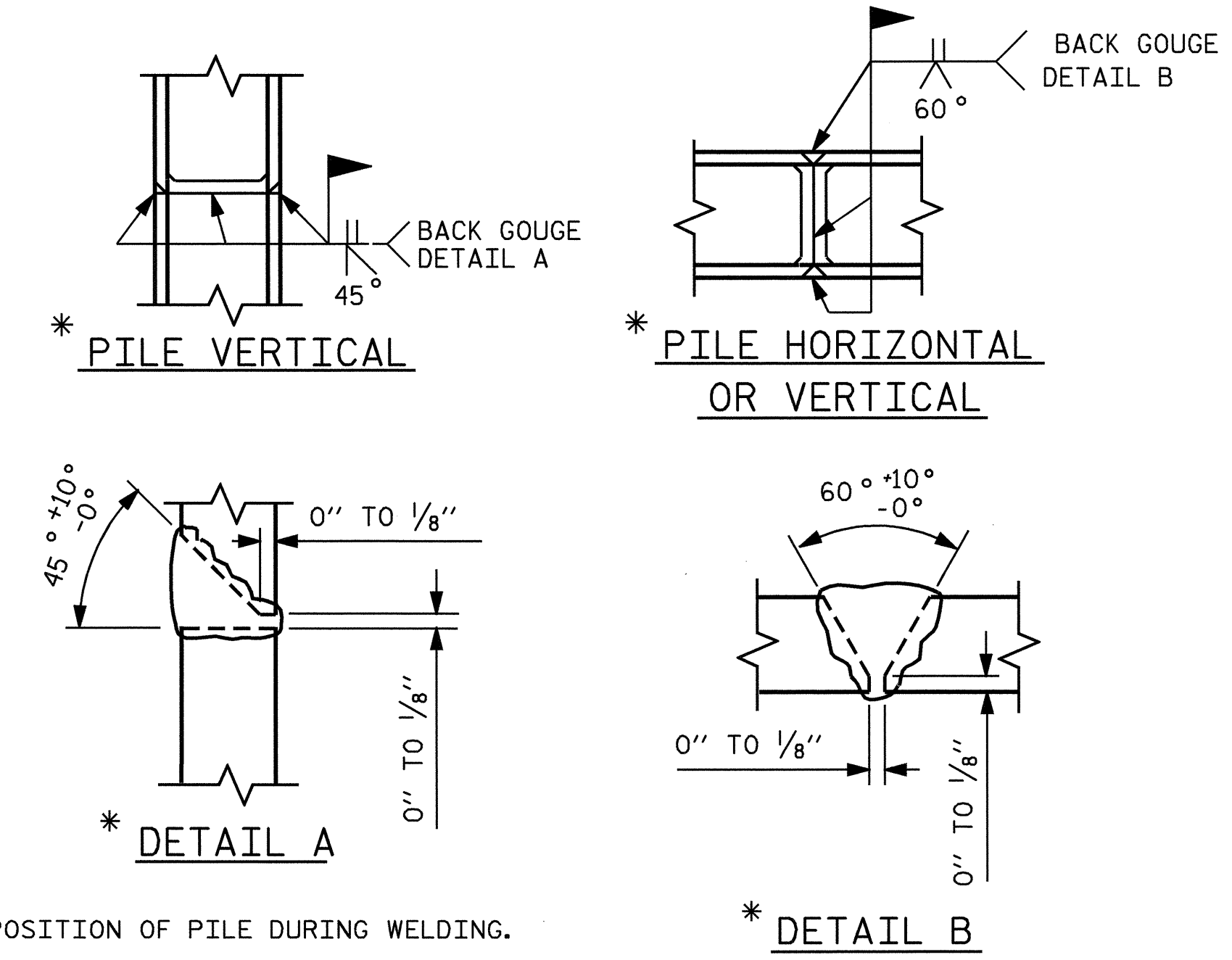


ALL BAR DIMENSIONS ARE OUT TO OUT.

BILL OF MATERIAL					
BENT #1					
BAR	NO.	SIZE	TYPE	LENGTH	WEIGHT
B1	8	#10		43'-10"	1509
B2	2	#7	STR	41'-2"	168
B3	8	#4	STR	21'-10"	117
B4	15	#4	STR	2'-8"	27
D1	52	#6	STR	1'-6"	117
S1	40	#4	2	7'-8"	205
S2	20	#4	3	7'-7"	101
U1	6	#4	4	5'-6"	22
U2	8	#4	4	5'-0"	27
U3	2	#9	4	9'-10"	67
U4	10	#4	4	3'-6"	23
REINFORCING STEEL					= 2383 LBS
CLASS A CONCRETE					
POUR #1 CAP					11.6 C.Y.
POUR #2 LATERAL GUIDE					0.1 C.Y.
TOTAL CLASS A CONCRETE					11.7 C.Y.
HP 14 x 73 STEEL PILES NO. 10					LIN. FT. 450
GALVANIZING STEEL PILES					LUMP SUM



LATERAL GUIDE DETAILS

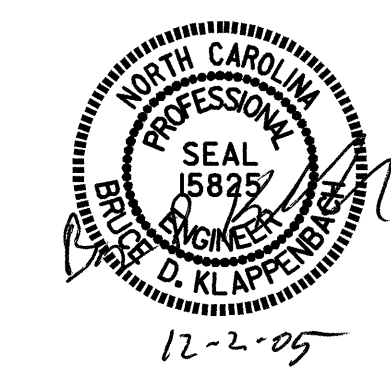


PILE SPLICE DETAILS

PROJECT NO. B-3848
GUILFORD COUNTY
 STATION: 13+54.50 -L-

SHEET 2 OF 2

STATE OF NORTH CAROLINA DEPARTMENT OF TRANSPORTATION RALEIGH					
SUBSTRUCTURE BENT #1					
REVISIONS					
NO.	BY:	DATE:	NO.	BY:	DATE:
1			3		
2			4		
					SHEET NO. S-19
					TOTAL SHEETS 27



DRAWN BY : J.B.WILSON/M.G.S. DATE : 7/26/05
 CHECKED BY : D.A. GLADDEN DATE : 8/02/05