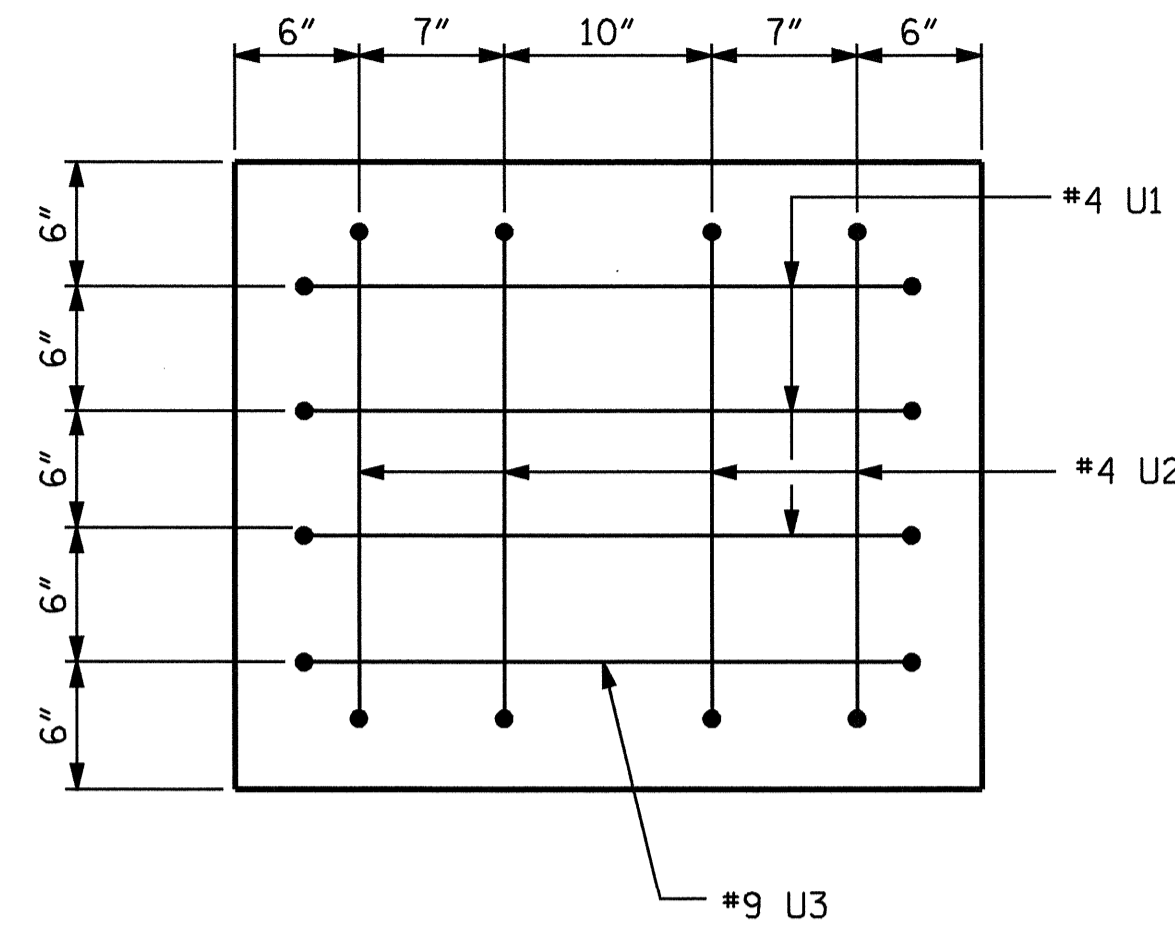
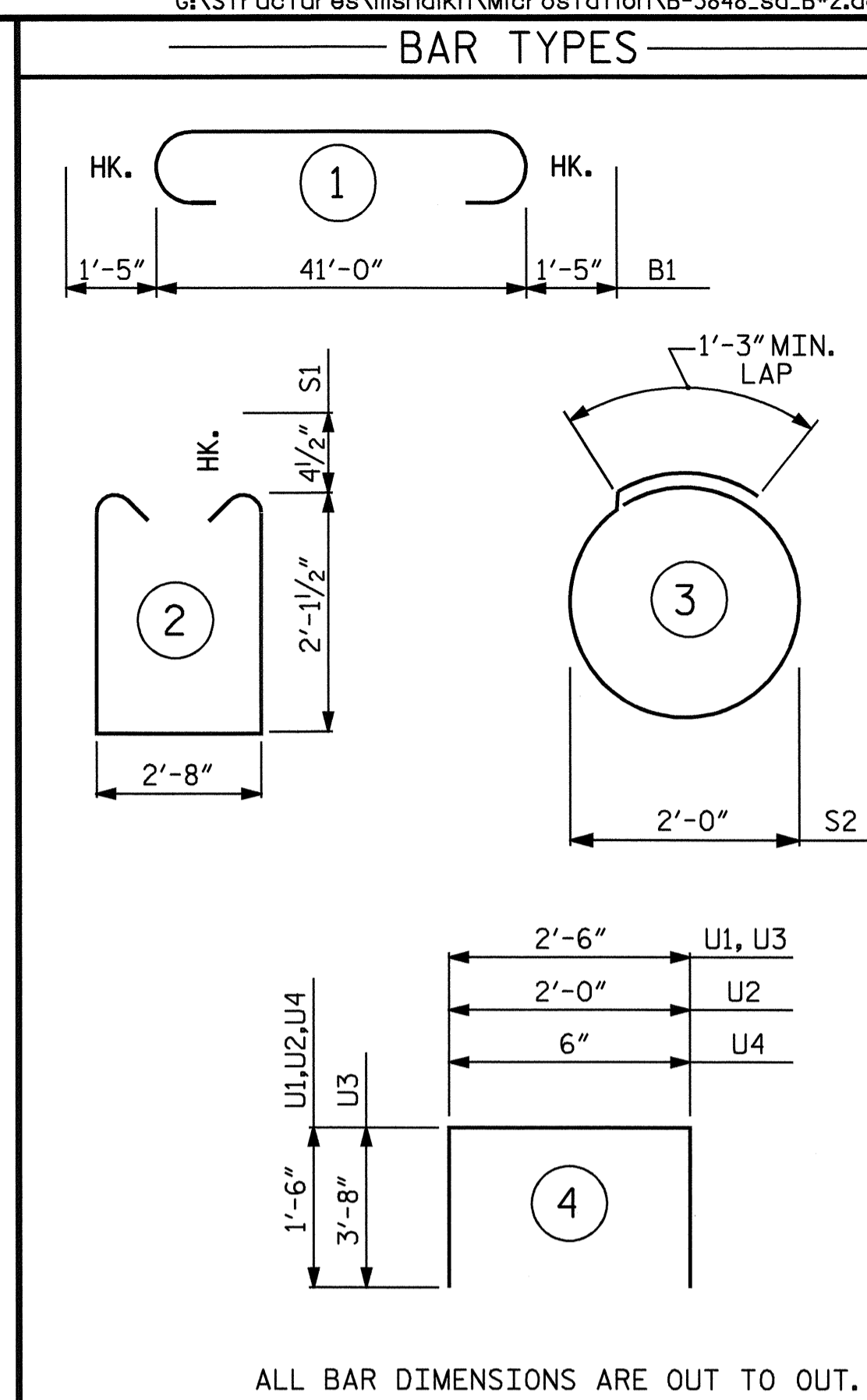


SECTION A-A



VIEW X-X

2" MIN. CONCRETE COVER FROM END OF CAP REQUIRED FOR ALL #4U1 AND #4U2 BARS.



ALL BAR DIMENSIONS ARE OUT TO OUT.

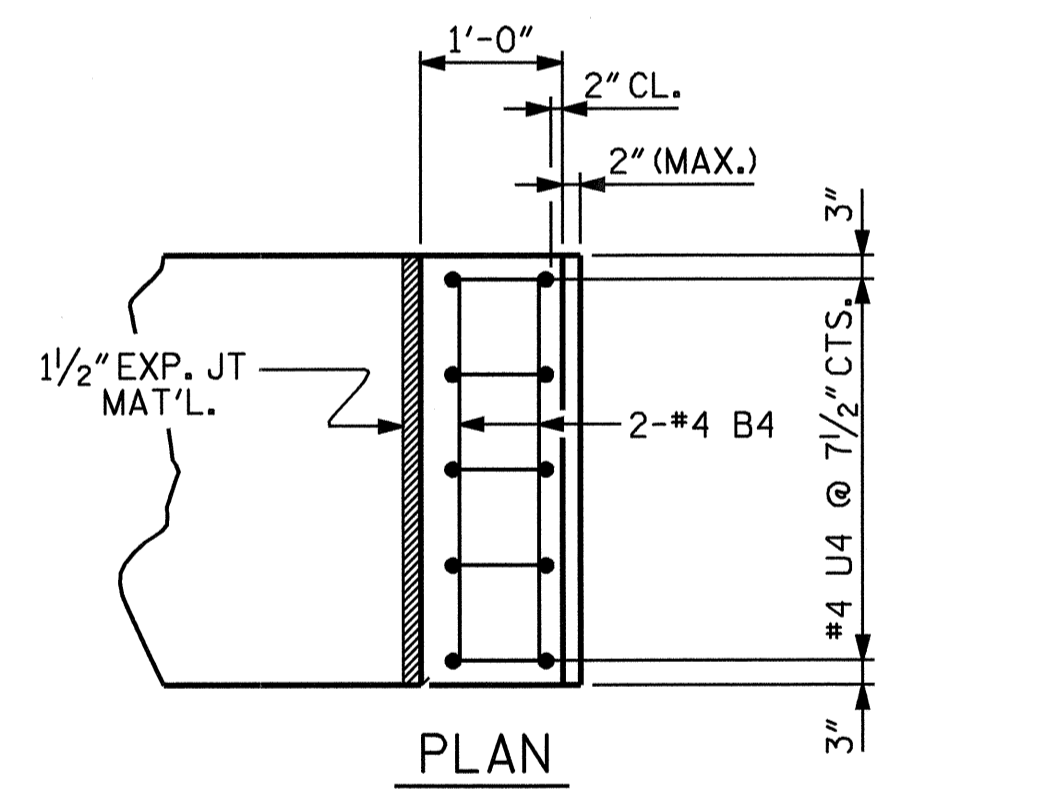
BILL OF MATERIAL

BENT #2					
BAR	NO.	SIZE	TYPE	LENGTH	WEIGHT
B1	8	#10		43'-10"	1509
B2	2	#7	STR	41'-2"	168
B3	8	#4	STR	21'-10"	117
B4	15	#4	STR	2'-8"	27
D1	52	#6	STR	1'-6"	117
S1	40	#4	2	7'-8"	205
S2	20	#4	3	7'-7"	101
U1	6	#4	4	5'-6"	22
U2	8	#4	4	5'-0"	27
U3	2	#9	4	9'-10"	67
U4	10	#4	4	3'-6"	23

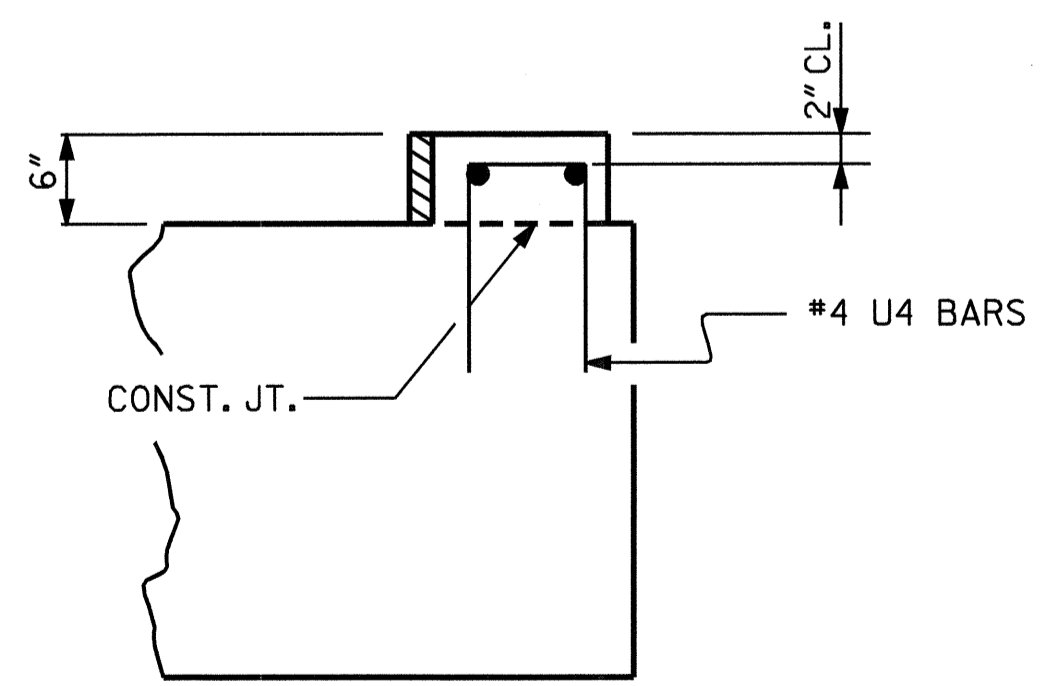
REINFORCING STEEL = 2383 LBS

CLASS A CONCRETE
 POUR #1 CAP 11.6 C.Y.
 POUR #2 LATERAL GUIDE 0.1 C.Y.
 TOTAL CLASS A CONCRETE 11.7 C.Y.

HP 14 x 73 STEEL PILES NO. 10 LIN. FT. 500
 GALVANIZING STEEL PILES LUMP SUM

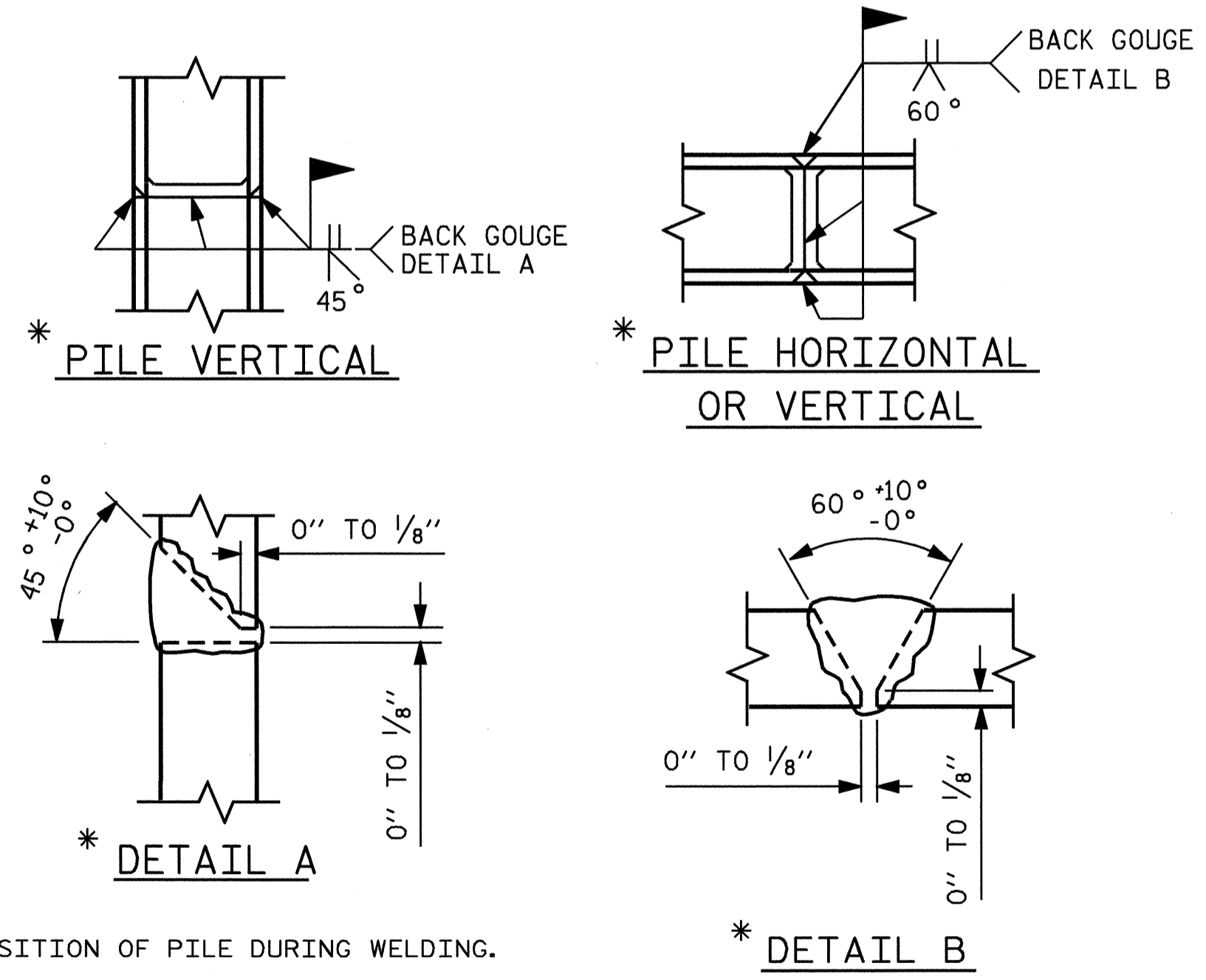


PLAN



ELEVATION

LATERAL GUIDE DETAILS



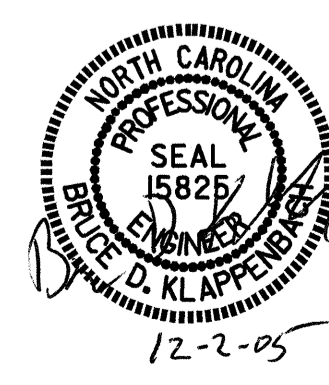
PILE SPLICE DETAILS

POSITION OF PILE DURING WELDING.

PROJECT NO. B-3848
 GUILFORD COUNTY
 STATION: 13+54.50 -L-

SHEET 2 OF 2

STATE OF NORTH CAROLINA
 DEPARTMENT OF TRANSPORTATION
 RALEIGH
 SUBSTRUCTURE
 BENT #2



REVISIONS						SHEET NO.
NO.	BY:	DATE:	NO.	BY:	DATE:	
1			3			5-21
2			4			TOTAL SHEETS 27

DRAWN BY: J.B.WILSON/M.G.S. DATE: 7/26/05
 CHECKED BY: D.A. GLADDEN DATE: 8/02/05