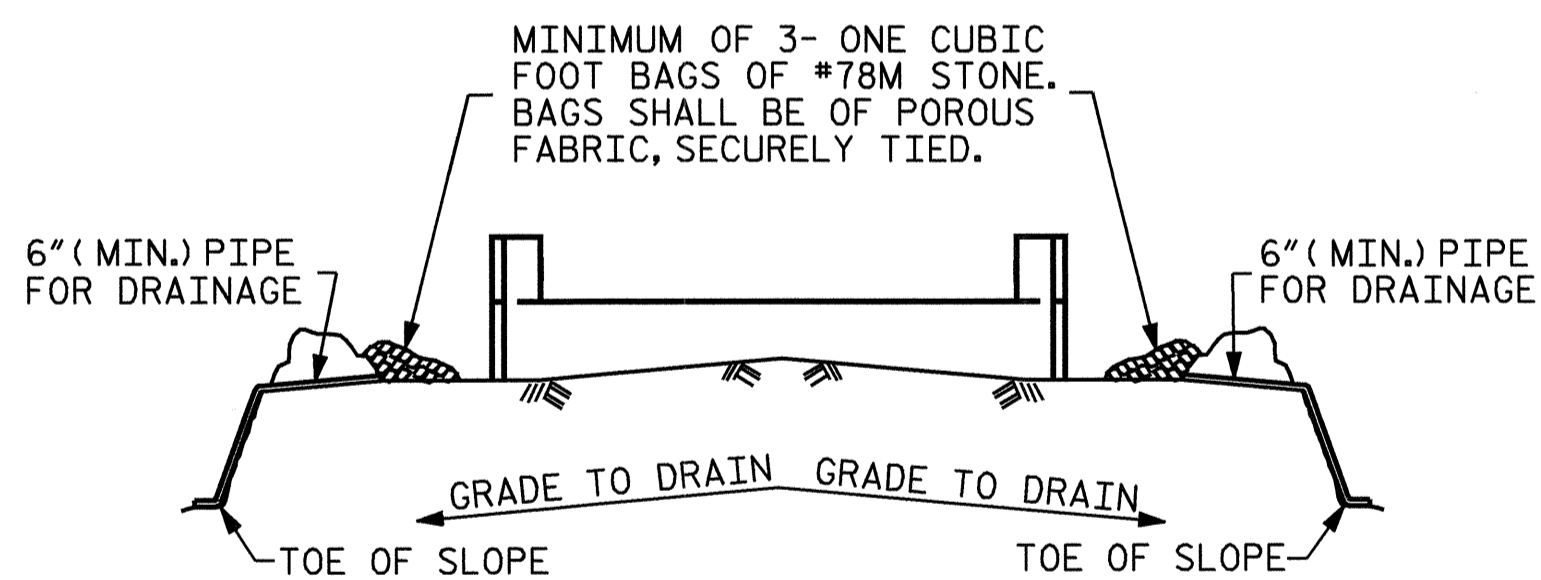


SECTION A-A



BAGGED STONE AND PIPE SHALL BE PLACED IMMEDIATELY AFTER COMPLETION OF END BENT EXCAVATION. PIPE MAY BE EITHER CONCRETE, CORRUGATED STEEL, CORRUGATED ALUMINUM ALLOY, OR CORRUGATED PLASTIC. PERFORATED PIPE WILL NOT BE ALLOWED.

BAGGED STONE SHALL REMAIN IN PLACE UNTIL THE ENGINEER DIRECTS THAT IT BE REMOVED. THE CONTRACTOR SHALL REMOVE AND DISPOSE OF SILT ACCUMULATIONS AT BAGGED STONE WHEN SO DIRECTED BY THE ENGINEER. BAGS SHALL BE REMOVED AND REPLACED WHENEVER THE ENGINEER DETERMINES THAT THEY HAVE DETEIORATED AND LOST THEIR EFFECTIVENESS.

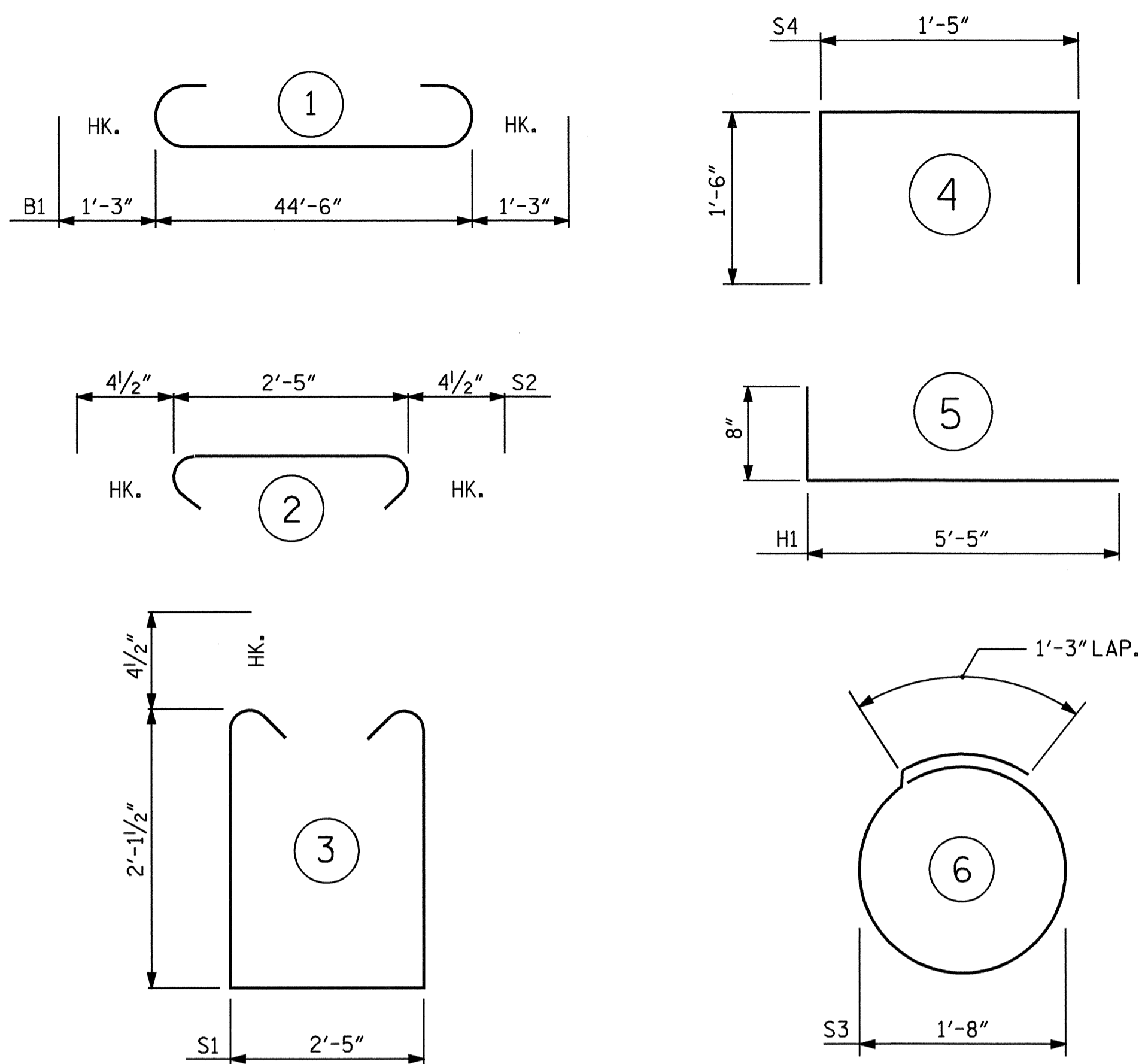
NO SEPARATE PAYMENT WILL BE MADE FOR THIS WORK AND THE ENTIRE COST OF THIS WORK SHALL BE INCLUDED IN THE UNIT CONTRACT PRICE BID FOR THE SEVERAL PAY ITEMS.

TEMPORARY DRAINAGE AT END BENT

DRAWN BY : J.B. WILSON/M.G.S. DATE : 4/11/05
 CHECKED BY : D.A. GLADDEN DATE : 7/5/05

18-NOV-2005 09:11
 G:\Structures\mshalkh\Microstation\B-3848.sd.E*2.dgn
 mshalkh

BAR TYPES



ALL BAR DIMENSIONS ARE OUT TO OUT.

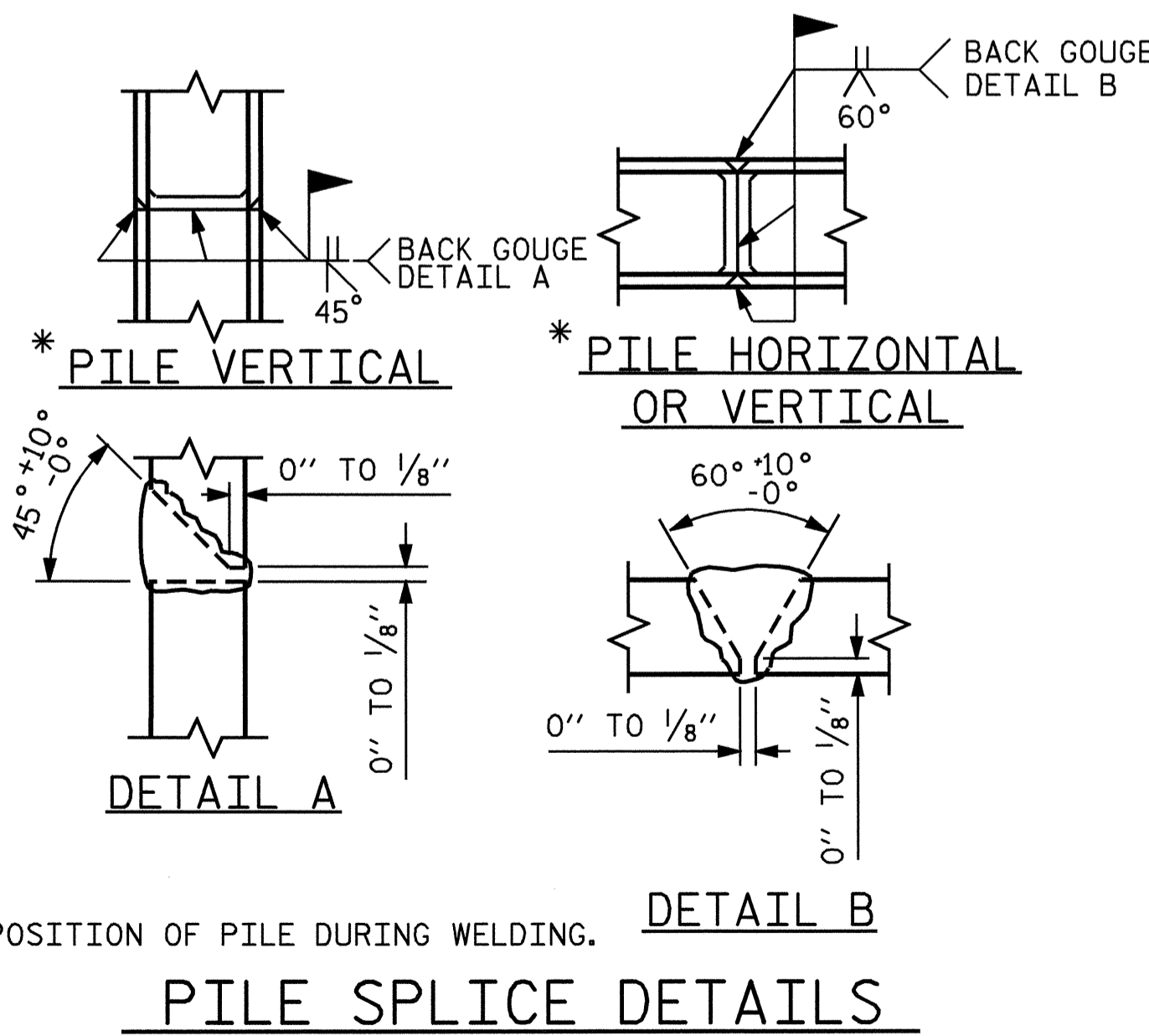
BILL OF MATERIAL

BAR NO.	NO.	SIZE	TYPE	LENGTH	WEIGHT
B1	8	#9	1	47'-0"	1278
B2	2	#6	STR	44'-8"	134
B3	8	#4	STR	23'-7"	126
B4	12	#4	STR	2'-5"	19
D1	26	#6	STR	1'-6"	59
H1	24	#4	5	6'-1"	98
K1	12	#4	STR	3'-1"	25
S1	44	#4	3	7'-5"	218
S2	44	#4	2	3'-2"	93
S3	16	#4	6	6'-6"	69
S4	4	#4	4	4'-5"	12
V1	40	#4	STR	4'-8"	125
REINFORCING STEEL =				2256 LBS	

CLASS "A" CONCRETE BREAKDOWN

POUR #1 CAP & BOTTOM OF WINGS	12.3 C.Y.
POUR #2 TOP PART OF WINGS	1.6 C.Y.
POUR #3 LATERAL GUIDES	0.1 C.Y.
CLASS "A" CONCRETE TOTAL	14.0 C.Y.

HP 12 X 53 STEEL PILES	
NO. 8	LIN. FT. 360



* POSITION OF PILE DURING WELDING.

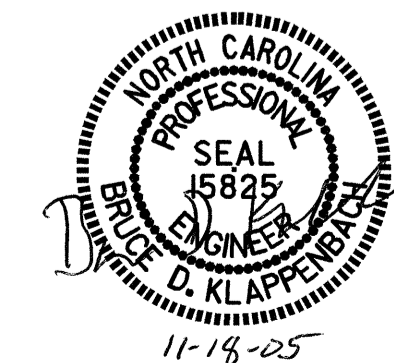
PILE SPLICE DETAILS

PROJECT NO. B-3848
 GUILFORD COUNTY
 STATION: 13+54.50 -L-

SHEET 3 OF 3

STATE OF NORTH CAROLINA
 DEPARTMENT OF TRANSPORTATION
 RALEIGH

SUBSTRUCTURE
 END BENT #2



REVISIONS						SHEET NO.
NO.	BY:	DATE:	NO.	BY:	DATE:	
1			3			5-24
2			4			TOTAL SHEETS 27