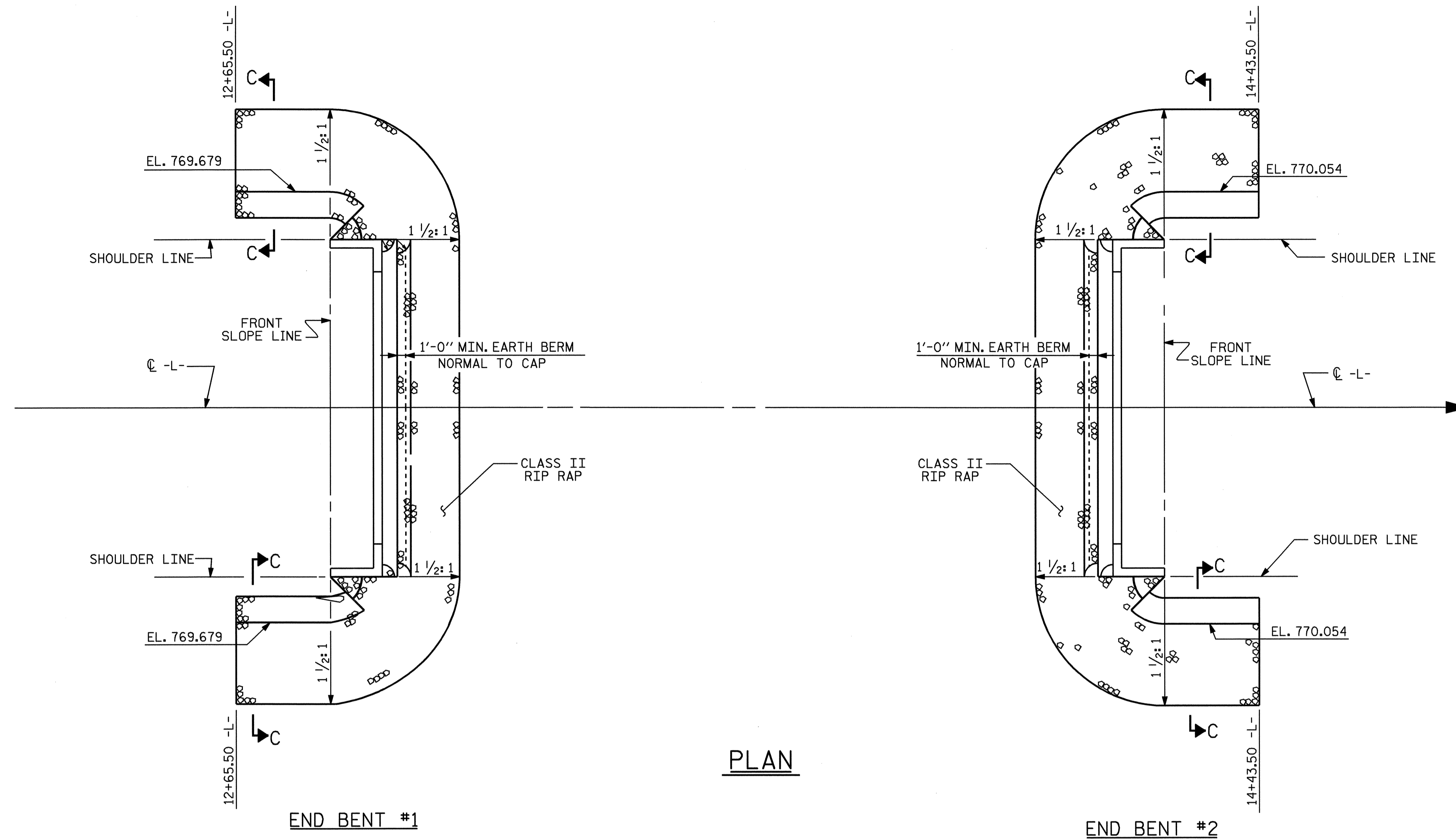


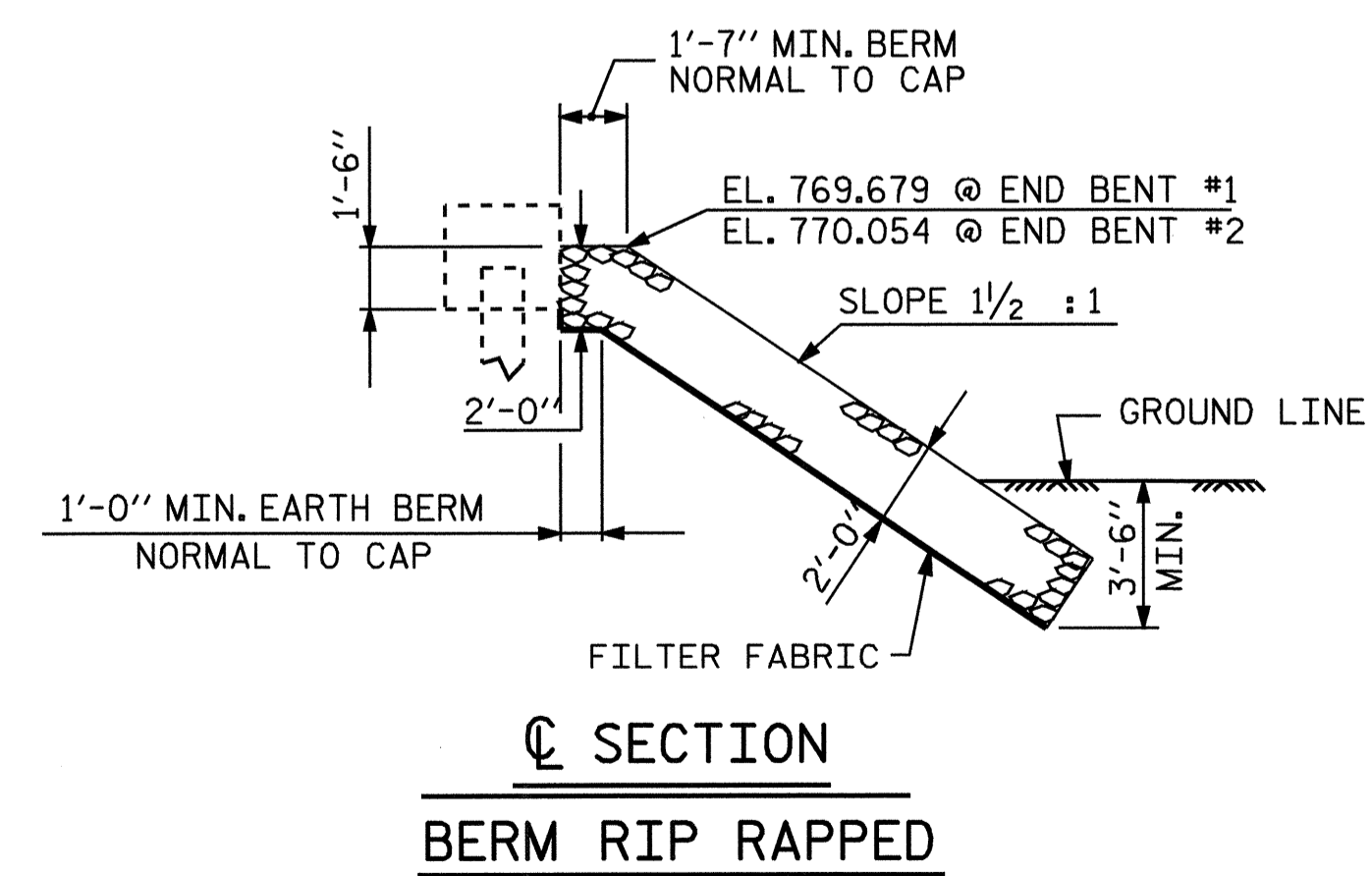
**NOTES :**

FOR BERM WIDTH DIMENSIONS, SEE GENERAL DRAWING.  
 THE COST OF THE FILTER FABRIC SHALL BE INCLUDED IN THE CONTRACT PRICE BID FOR PLAIN RIP RAP CLASS II.

ESTIMATED QUANTITIES		
BRIDGE @ STA. 13+54.50-L-	PLAIN RIP RAP CLASS II	FILTER FABRIC FOR DRAINAGE
	TONS	SQUARE YARDS
END BENT 1	138	154
END BENT 2	141	157
<b>TOTAL</b>	<b>279</b>	<b>311</b>

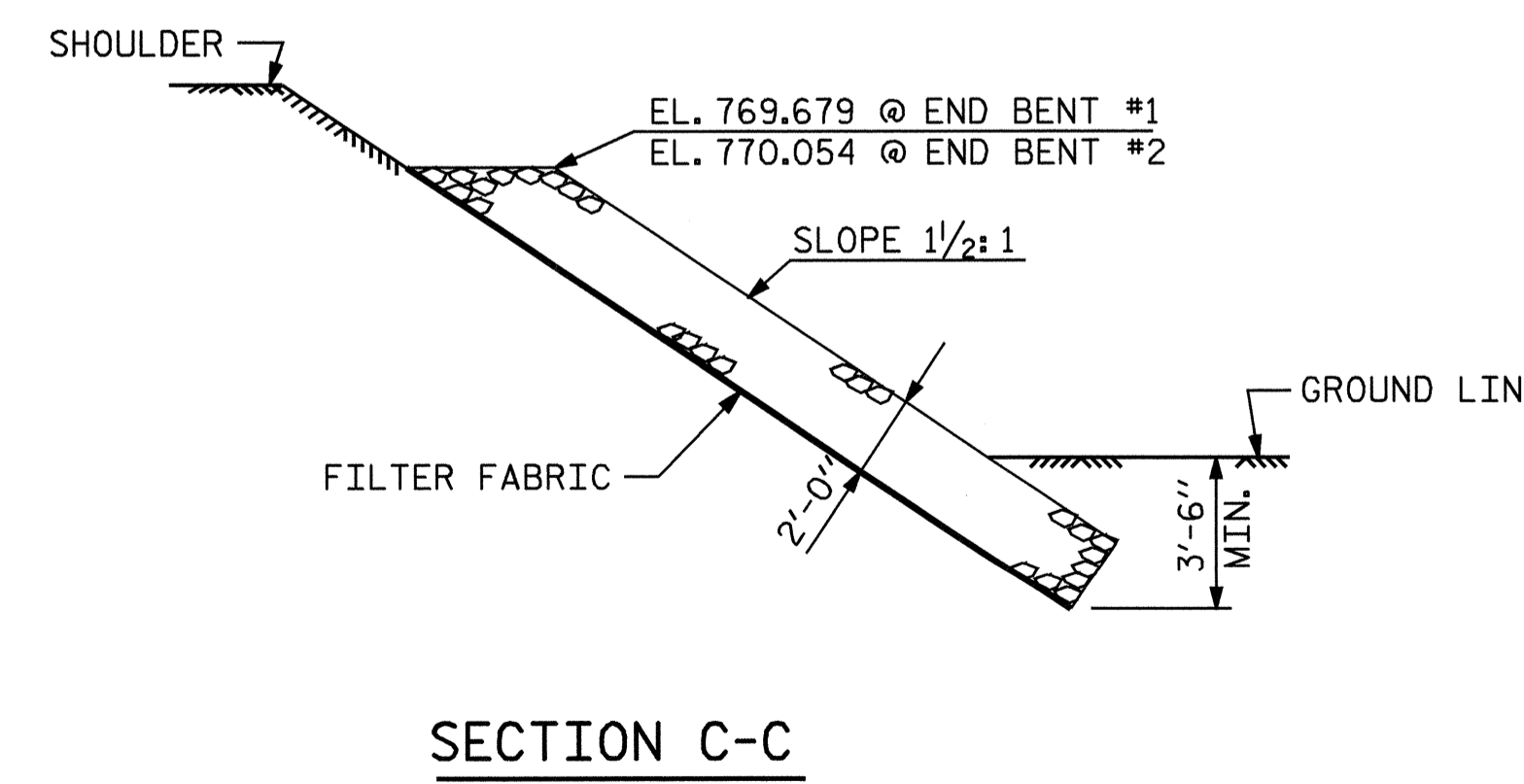


**PLAN**



**SECTION**

**BERM RIP RAPPED**



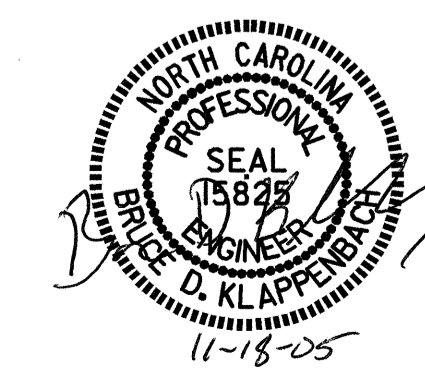
**SECTION C-C**

PROJECT NO. B-3848  
GUILFORD COUNTY  
 STATION: 13+54.50 -L-

STATE OF NORTH CAROLINA  
 DEPARTMENT OF TRANSPORTATION  
 RALEIGH

**— RIP RAP DETAILS —**

ASSEMBLED BY : M. G. SHAIKH DATE : 4-14-05  
 CHECKED BY : J. B. WILSON DATE : 4-11-05  
 DRAWN BY : FCJ 2/88 REV. 7/17/98 REK/RWW  
 CHECKED BY : ARB 8/88 REV. 8/16/99 RWW/LES  
 REV. 10/17/00 RWW/LES



REVISIONS						SHEET NO.
NO.	BY:	DATE:	NO.	BY:	DATE:	TOTAL SHEETS
1			3			5-25
2			4			27