

NOTES

FOR REINFORCED BRIDGE APPROACH FILL INCLUDING FABRIC, IMPERMEABLE GEOMEMBRANE, 4" Ø DRAINAGE PIPE, #78M STONE, AND SELECT MATERIAL, SEE ROADWAY PLANS.

TEMPORARY DRAINAGE AND TEMPORARY BERM AND SLOPE DRAINS WILL BE PAID FOR UNDER THE LUMP SUM PRICE FOR BRIDGE APPROACH SLAB.

AREA BETWEEN THE WINGWALL AND APPROACH SLAB SHALL BE GRADED TO DRAIN THE WATER AWAY FROM THE FILL FACE OF THE BRIDGE AND SHALL BE PAVED. SEE ROADWAY PLANS.

THE 6" COMP. A.B.C. SHALL EXTEND 10'-0" BEYOND THE END OF THE APPROACH SLAB AND 1'-0" OUTSIDE OF EACH EDGE OF SLAB.

THE CONTRACTOR MAY USE 4" TYPE B-25.0B ASPHALT CONCRETE BASE COURSE IN LIEU OF 6" COMP. A.B.C. IF THIS OPTION IS USED, THE BASE COURSE SHALL EXTEND 1'-0" BEYOND THE END OF THE APPROACH SLAB AND THE WIDTH SHALL BE THE SAME AS THAT OF THE APPROACH SLAB.

THE CONTRACTOR MAY USE 5" CLASS "A" CONCRETE BASE IN LIEU OF 6" COMP. A.B.C. IF THIS OPTION IS USED, THE CONCRETE BASE SHALL EXTEND 1'-0" BEYOND THE END OF THE APPROACH SLAB AND THE WIDTH SHALL BE THE SAME AS THAT OF THE APPROACH SLAB. THE CONCRETE SHALL BE FINISHED TO A SMOOTH SURFACE AND A LAYER OF 30 LB ROOFING FELT SHALL BE PLACED BETWEEN THE CONCRETE BASE AND THE APPROACH SLAB TO PREVENT BOND. THE APPROACH SLAB SHALL NOT BE CAST UNTIL THE CONCRETE BASE HAS REACHED AN AGE OF THREE CURING DAYS.

FOR JOINT DETAILS, SEE "PRESTRESSED CONCRETE CORED SLAB UNIT" SHEETS.

THE JOINT AT THE END BENT SHALL BE SEALED AS SOON AS PRACTICAL AFTER THE CONSTRUCTION OF THE APPROACH SLABS.

APPROACH SLAB GROOVING IS NOT REQUIRED.

BILL OF MATERIAL

APPROACH SLAB AT END BENT #1

| BAR | NO. | SIZE | TYPE | LENGTH | WEIGHT |
|-----|-----|------|------|--------|--------|
| *A1 | 30 | #4 | STR | 19'-9" | 396 |
| A2 | 30 | #4 | STR | 19'-8" | 394 |
| *B1 | 76 | #5 | STR | 14'-3" | 1130 |
| B2 | 76 | #6 | STR | 14'-8" | 1674 |

REINFORCING STEEL LBS. 2068

*EPOXY COATED REINFORCING STEEL LBS. 1526

CLASS AA CONCRETE C. Y. 22.8

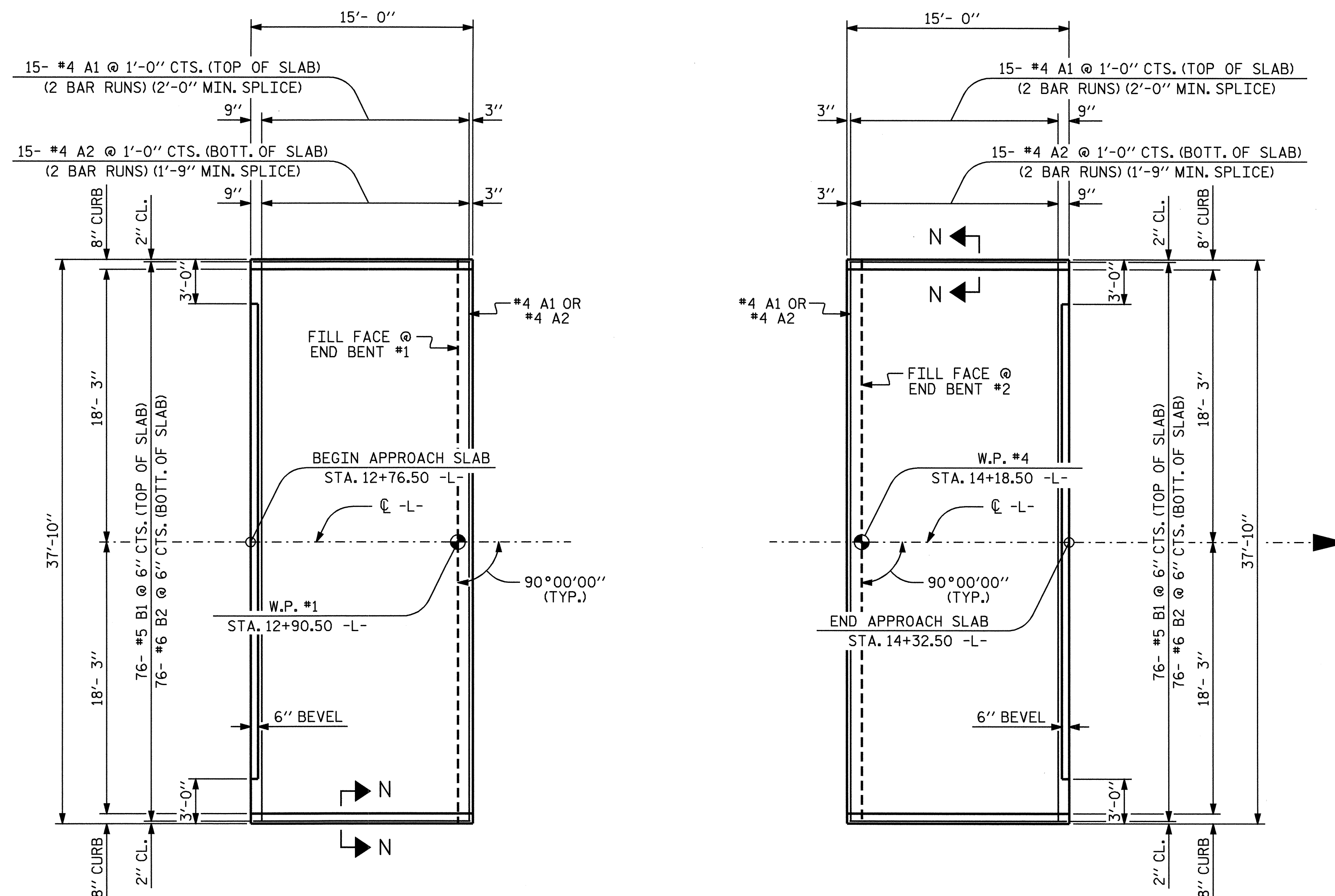
APPROACH SLAB AT END BENT #2

| BAR | NO. | SIZE | TYPE | LENGTH | WEIGHT |
|-----|-----|------|------|--------|--------|
| *A1 | 30 | #4 | STR | 19'-9" | 396 |
| A2 | 30 | #4 | STR | 19'-8" | 394 |
| *B1 | 76 | #5 | STR | 14'-3" | 1130 |
| B2 | 76 | #6 | STR | 14'-8" | 1674 |

REINFORCING STEEL LBS. 2068

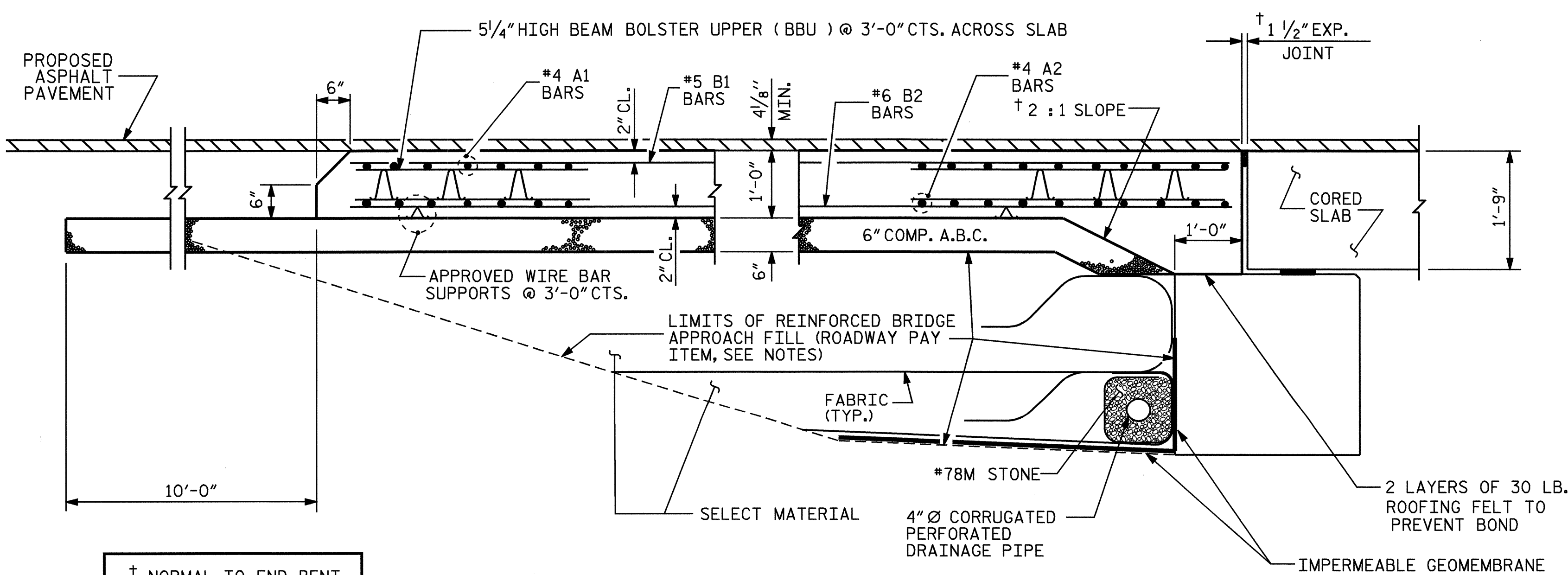
*EPOXY COATED REINFORCING STEEL LBS. 1526

CLASS AA CONCRETE C. Y. 22.8

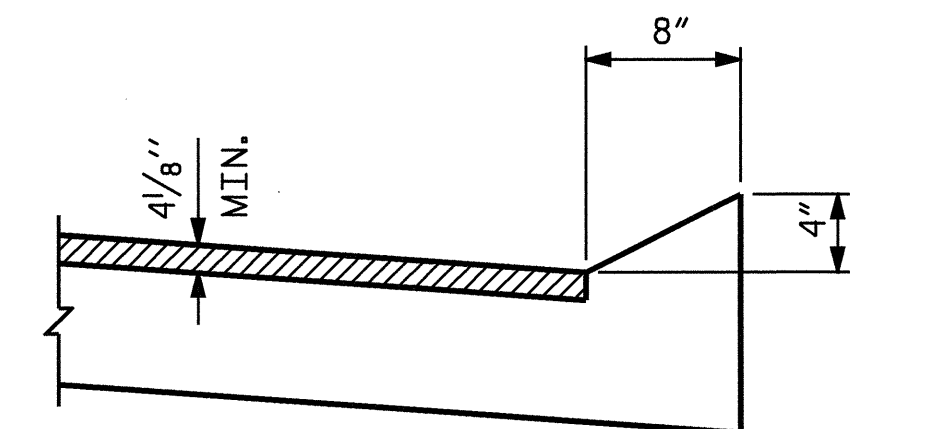


PLAN APPROACH SLAB @ END BENT #1

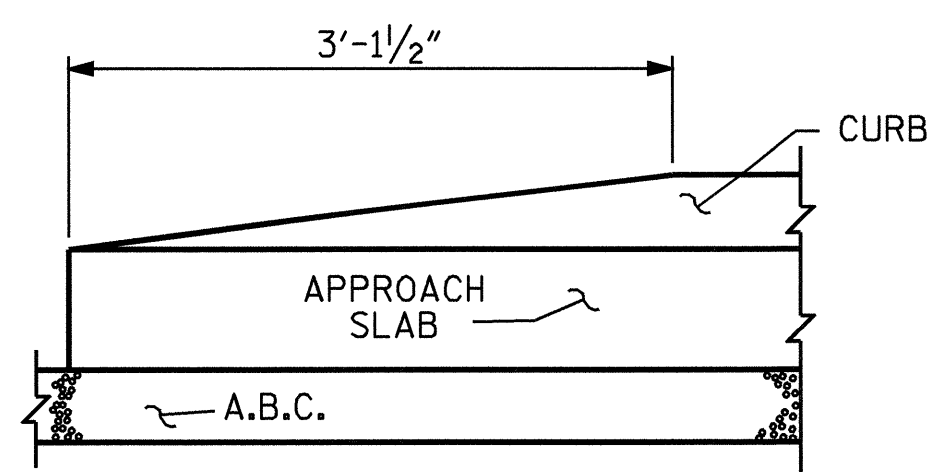
PLAN APPROACH SLAB @ END BENT #2



SECTION THRU SLAB



SECTION N-N



END OF CURB WITHOUT SHOULDER BERM GUTTER

CURB DETAILS

PROJECT NO. B-3848
 GUILFORD COUNTY
 STATION: 13+54.50 -L-

SHEET 1 OF 2

STATE OF NORTH CAROLINA
 DEPARTMENT OF TRANSPORTATION
 RALEIGH
 STANDARD

BRIDGE APPROACH SLAB
 FOR PRESTRESSED CONCRETE
 CORED SLAB

REVISIONS

| NO. | BY: | DATE: | NO. | BY: | DATE: |
|-----|-----|-------|-----|-----|-------|
| 1 | | | 3 | | |
| 2 | | | 4 | | |

SHEET NO.

5-26

TOTAL SHEETS

27

ASSEMBLED BY : D. A. GLADDEN DATE : 8-24-05
 CHECKED BY : M. G. SHAIKH DATE : 9-14-05
 DRAWN BY : FCJ 6/87 REV. 10/17/00 RWW/LES
 CHECKED BY : EGA 6/87 REV. 7/10/01 LES/RDR
 REV. 5/7/03R RWW/JTE