

B-3847 SURVEY CONTROL SHEET

BENCHMARK DATA

TBM "A" ELEVATION = 816.33
N 840986 E 1697931
L STATION 13+95.36 LEFT
RR SPIKE SET IN 51' DOUBLE SYCAMORE

TBM "B" ELEVATION = 815.05
N 840940 E 1698156
L STATION 16+14.35 RIGHT
RR SPIKE SET IN POWER POLE

BASELINE DATA

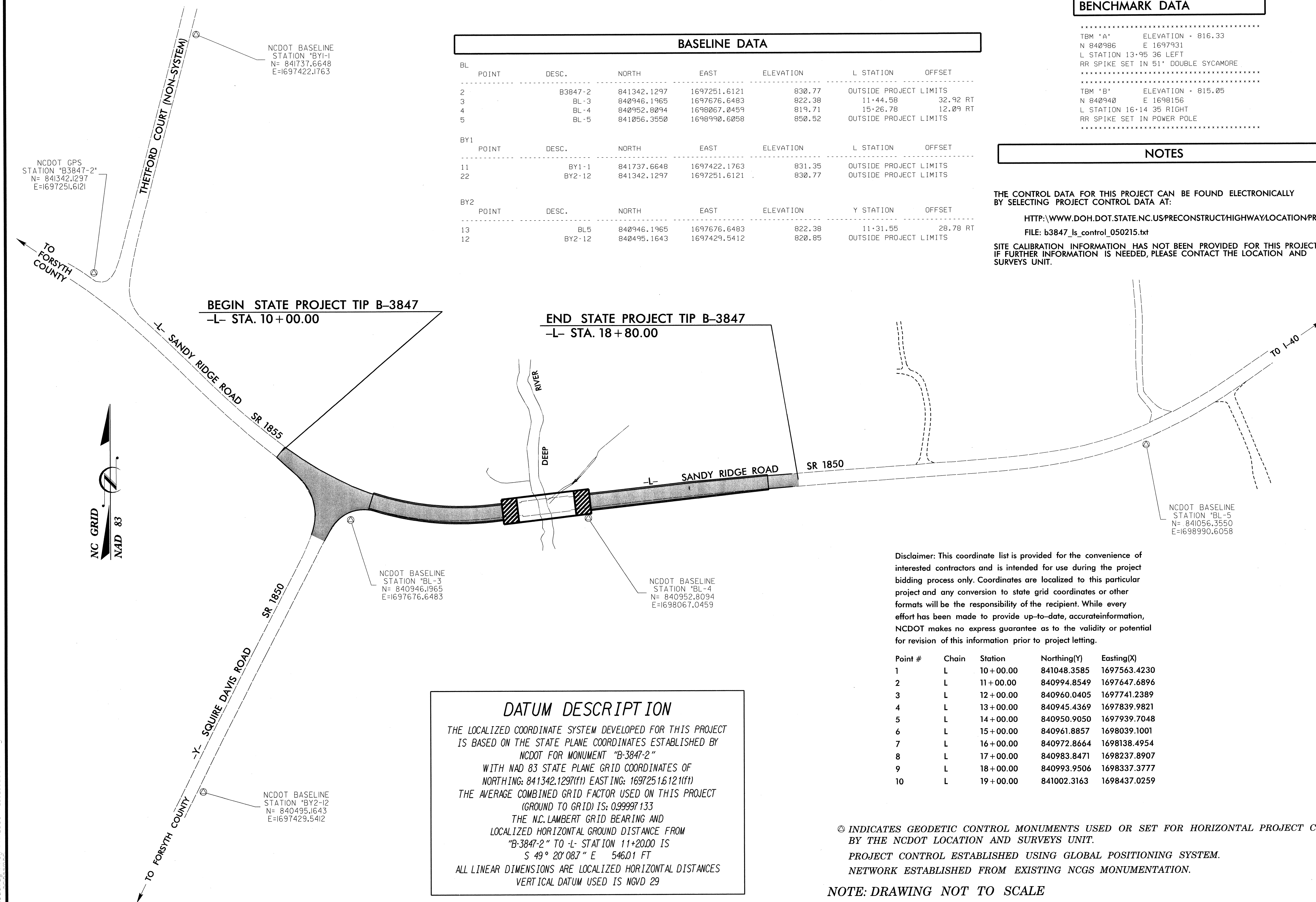
BL	POINT	DESC.	NORTH	EAST	ELEVATION	L STATION	OFFSET
2		B3847-2	841342.1297	1697251.6121	830.77	OUTSIDE PROJECT LIMITS	
3		BL-3	840946.1965	1697676.6483	822.38	11+44.58	32.92 RT
4		BL-4	840952.8094	1698067.0459	819.71	15+26.78	12.09 RT
5		BL-5	841056.3550	1698990.6058	850.52	OUTSIDE PROJECT LIMITS	

BY1	POINT	DESC.	NORTH	EAST	ELEVATION	L STATION	OFFSET
11		BY1-1	841737.6648	1697422.1763	831.35	OUTSIDE PROJECT LIMITS	
22		BY2-12	841342.1297	1697251.6121	830.77	OUTSIDE PROJECT LIMITS	

BY2	POINT	DESC.	NORTH	EAST	ELEVATION	Y STATION	OFFSET
13		BL5	840946.1965	1697676.6483	822.38	11+31.55	28.78 RT
12		BY2-12	840495.1643	1697429.5412	820.85	OUTSIDE PROJECT LIMITS	

NOTES

THE CONTROL DATA FOR THIS PROJECT CAN BE FOUND ELECTRONICALLY BY SELECTING PROJECT CONTROL DATA AT:
[HTTP://WWW.DOH.DOT.STATE.NC.US/PRECONSTRUCTHIGHWAY/LOCATION/PROJECT/](http://www.doh.dot.state.nc.us/preconstructhighway/location/project/)
FILE: b3847_ls_control_050215.txt
SITE CALIBRATION INFORMATION HAS NOT BEEN PROVIDED FOR THIS PROJECT. IF FURTHER INFORMATION IS NEEDED, PLEASE CONTACT THE LOCATION AND SURVEYS UNIT.



DATUM DESCRIPTION
THE LOCALIZED COORDINATE SYSTEM DEVELOPED FOR THIS PROJECT IS BASED ON THE STATE PLANE COORDINATES ESTABLISHED BY NCDOT FOR MONUMENT "B-3847-2"
WITH NAD 83 STATE PLANE GRID COORDINATES OF
NORTHING: 841342.1297(ft) EASTING: 1697251.6121(ft)
THE AVERAGE COMBINED GRID FACTOR USED ON THIS PROJECT (GROUND TO GRID) IS: 0.99997133
THE N.C. LAMBERT GRID BEARING AND LOCALIZED HORIZONTAL GROUND DISTANCE FROM "B-3847-2" TO -L- STATION 11+20.00 IS
S 49° 20' 08.7" E 546.01 FT
ALL LINEAR DIMENSIONS ARE LOCALIZED HORIZONTAL DISTANCES
VERTICAL DATUM USED IS NGVD 29

Disclaimer: This coordinate list is provided for the convenience of interested contractors and is intended for use during the project bidding process only. Coordinates are localized to this particular project and any conversion to state grid coordinates or other formats will be the responsibility of the recipient. While every effort has been made to provide up-to-date, accurate information, NCDOT makes no express guarantee as to the validity or potential for revision of this information prior to project letting.

Point #	Chain	Station	Northing(Y)	Easting(X)
1	L	10+00.00	841048.3585	1697563.4230
2	L	11+00.00	840994.8549	1697647.6896
3	L	12+00.00	840960.0405	1697741.2389
4	L	13+00.00	840945.4369	1697839.9821
5	L	14+00.00	840950.9050	1697939.7048
6	L	15+00.00	840961.8857	1698039.1001
7	L	16+00.00	840972.8664	1698138.4954
8	L	17+00.00	840983.8471	1698237.8907
9	L	18+00.00	840993.9506	1698337.3777
10	L	19+00.00	841002.3163	1698437.0259

⊙ INDICATES GEODETIC CONTROL MONUMENTS USED OR SET FOR HORIZONTAL PROJECT CONTROL BY THE NCDOT LOCATION AND SURVEYS UNIT.
PROJECT CONTROL ESTABLISHED USING GLOBAL POSITIONING SYSTEM.
NETWORK ESTABLISHED FROM EXISTING NCGS MONUMENTATION.

NOTE: DRAWING NOT TO SCALE

10/26/2005
R:\Roadwork\Projects\N-H-L-B3847_1s_1c_050215.dgn