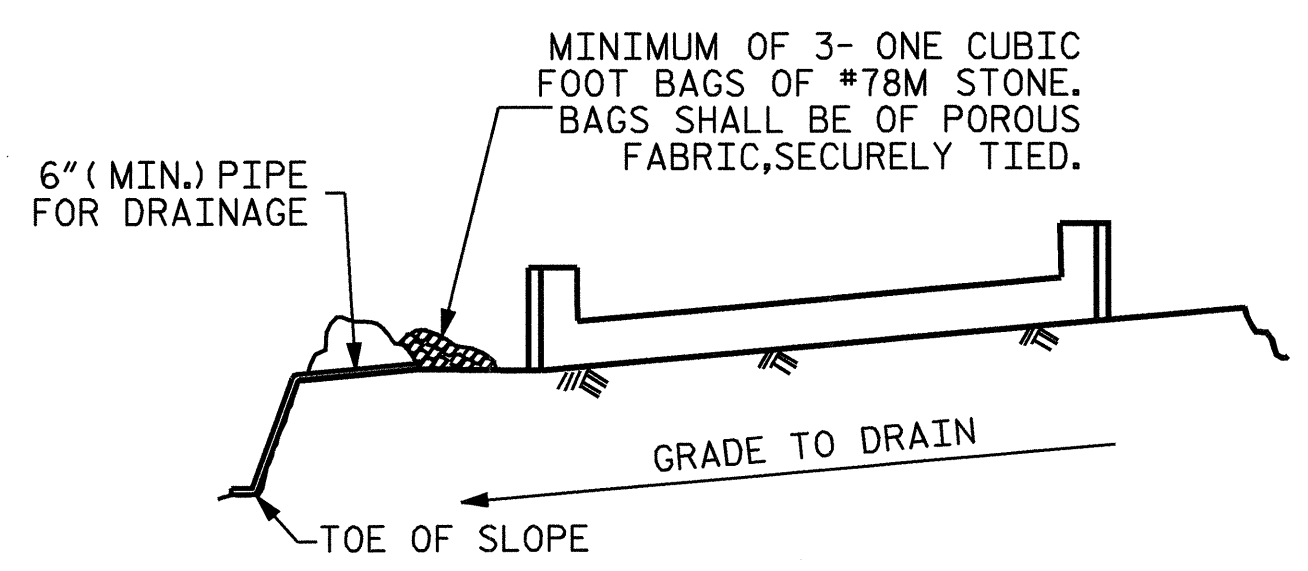


SECTION "A-A"



BAGGED STONE AND PIPE SHALL BE PLACED IMMEDIATELY AFTER COMPLETION OF END BENT EXCAVATION. PIPE MAY BE EITHER CONCRETE, CORRUGATED STEEL, CORRUGATED ALUMINUM ALLOY, OR CORRUGATED PLASTIC. PERFORATED PIPE WILL NOT BE ALLOWED.

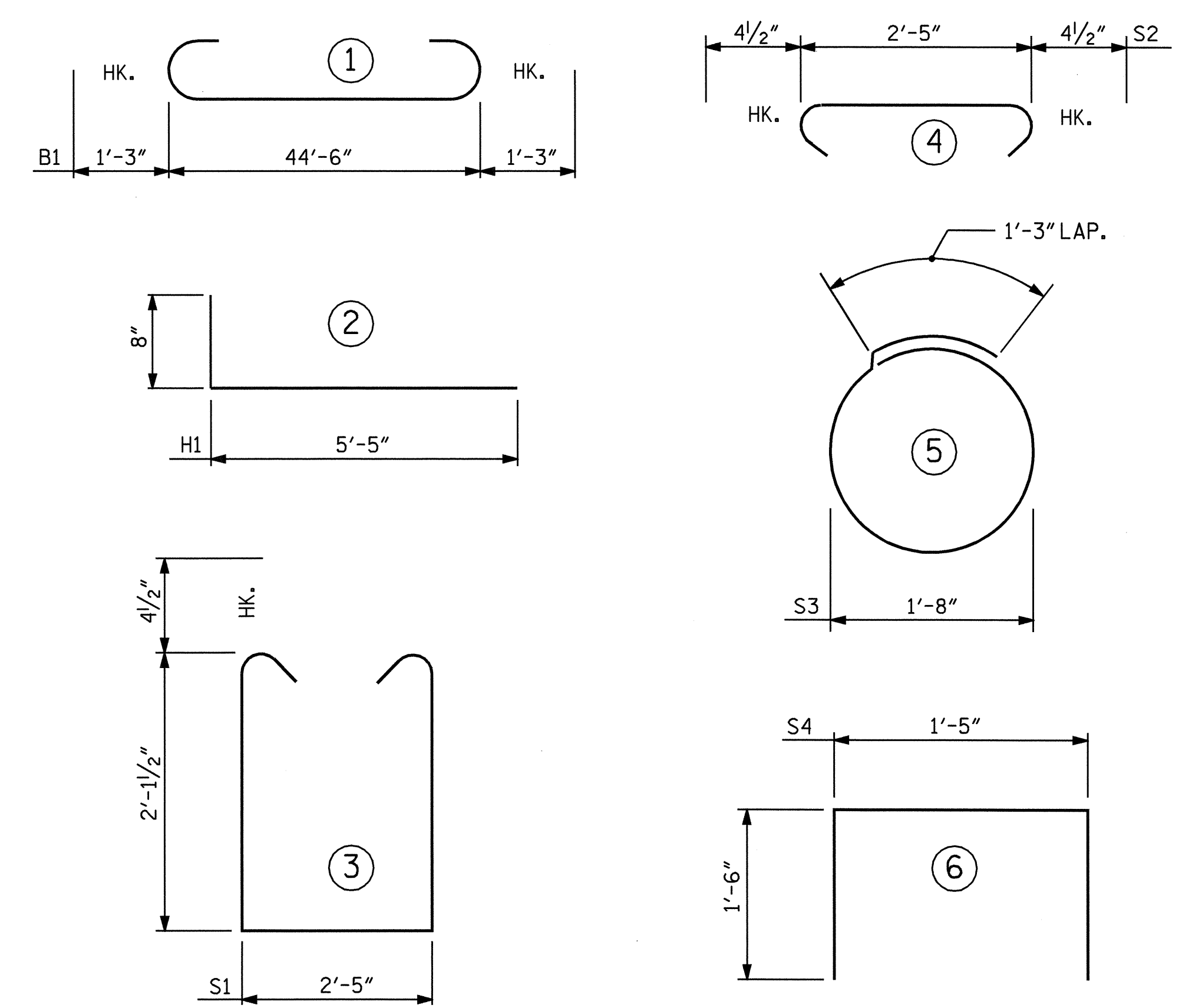
BAGGED STONE SHALL REMAIN IN PLACE UNTIL THE ENGINEER DIRECTS THAT IT BE REMOVED. THE CONTRACTOR SHALL REMOVE AND DISPOSE OF SILT ACCUMULATIONS AT BAGGED STONE WHEN SO DIRECTED BY THE ENGINEER. BAGS SHALL BE REMOVED AND REPLACED WHENEVER THE ENGINEER DETERMINES THAT THEY HAVE DETERIORATED AND LOST THEIR EFFECTIVENESS.

NO SEPARATE PAYMENT WILL BE MADE FOR THIS WORK AND THE ENTIRE COST OF THIS WORK SHALL BE INCLUDED IN THE UNIT CONTRACT PRICE BID FOR THE SEVERAL PAY ITEMS.

TEMPORARY DRAINAGE AT END BENT

DRAWN BY : M. G. SHAIKH DATE : 05-12-05  
CHECKED BY : D. A. GLADDEN DATE : 10-17-05

BAR TYPES



ALL BAR DIMENSIONS ARE OUT TO OUT.

BILL OF MATERIAL FOR END BENT #1

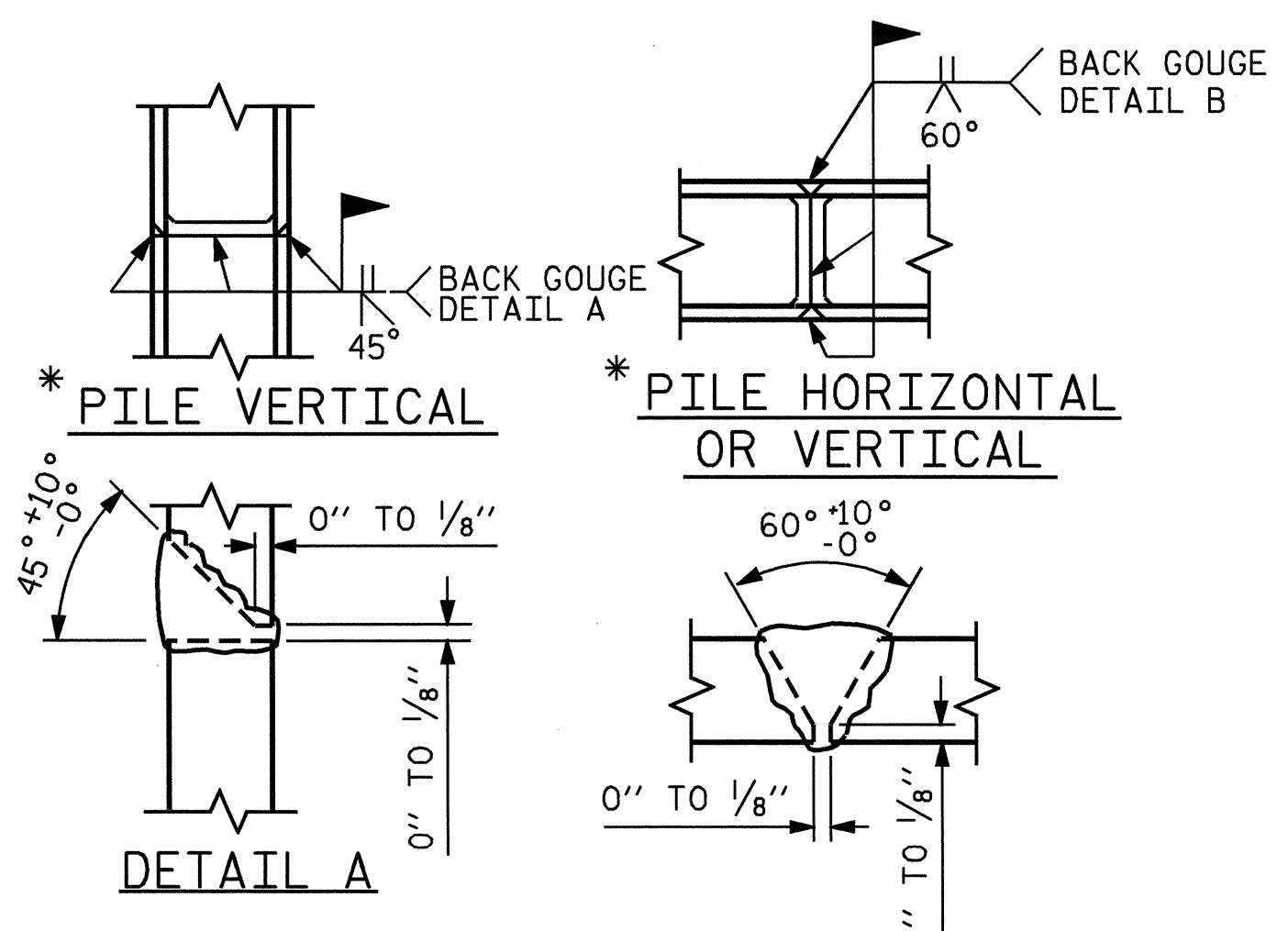
BAR	NO.	SIZE	TYPE	LENGTH	WEIGHT
B1	8	#9	1	47'-0"	1278
B2	2	#6	STR	44'-8"	134
B3	8	#4	STR	23'-7"	126
B4	11	#4	STR	2'-5"	18
D1	26	#6	STR	1'-6"	59
H1	24	#4	2	6'-1"	98
K1	12	#4	STR	3'-1"	25
S1	44	#4	3	7'-5"	218
S2	44	#4	4	3'-2"	93
S3	16	#4	5	6'-6"	69
S4	4	#4	6	4'-5"	12
V1	20	#4	STR	4'-8"	62
V2	20	#4	STR	4'-6"	60

REINFORCING STEEL = 2252 LBS

CLASS A CONCRETE BREAKDOWN

POUR #	DESCRIPTION	C.Y.	WEIGHT
POUR #1	CAP & LOWER PORTION OF WINGS		12.3
POUR #2	WINGS		1.5
POUR #3	LATERAL GUIDES		0.1
TOTAL CLASS A CONCRETE		C.Y.	13.9

HP 12 X 53 STEEL PILES  
NO. 8 LIN. FT. 280



\* POSITION OF PILE DURING WELDING.

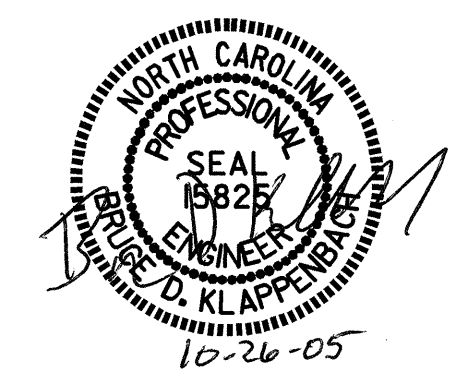
PILE SPLICE DETAILS

PROJECT NO. B-3847  
GUILFORD COUNTY  
STATION: 14+60.00 -L-

SHEET 3 OF 3

STATE OF NORTH CAROLINA  
DEPARTMENT OF TRANSPORTATION  
RALEIGH

SUBSTRUCTURE END BENT #1



REVISIONS						SHEET NO.
NO.	BY:	DATE:	NO.	BY:	DATE:	
1			3			5-15
2			4			TOTAL SHEETS 23