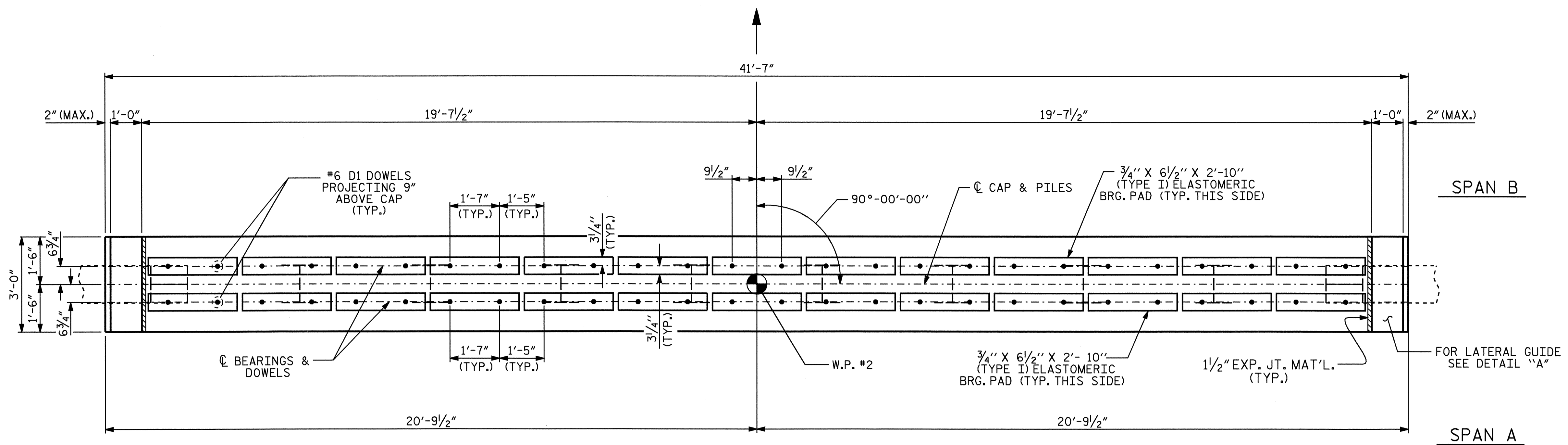
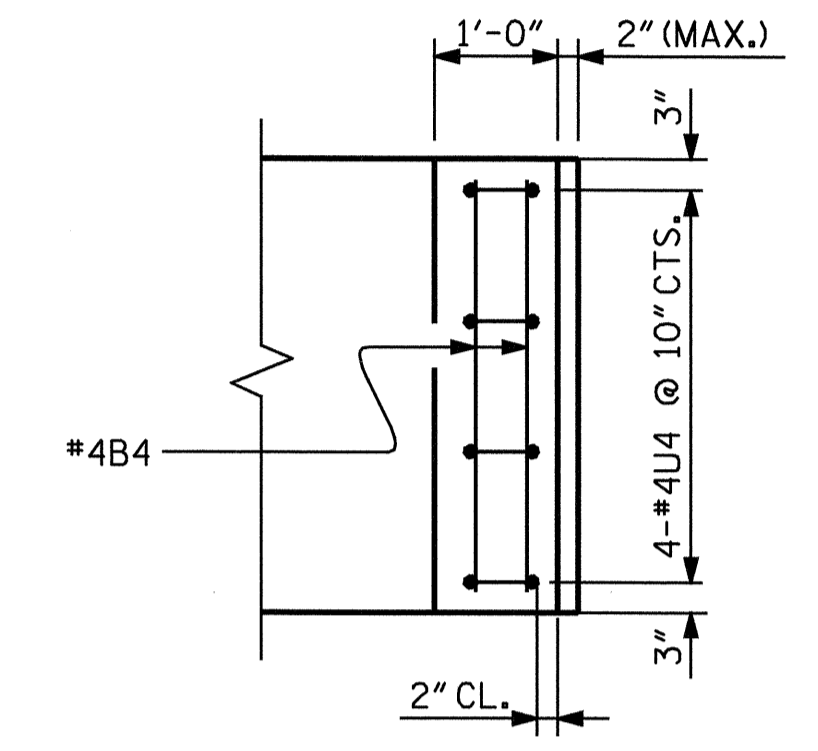


NOTES

STIRRUPS IN CAP MAY BE SHIFTED AS NECESSARY TO CLEAR ANCHOR BOLTS.
 THE LATERAL GUIDE AT EACH END OF THE CAP IS NOT TO BE POURED UNTIL AFTER THE CORED SLAB UNITS ARE IN PLACE.

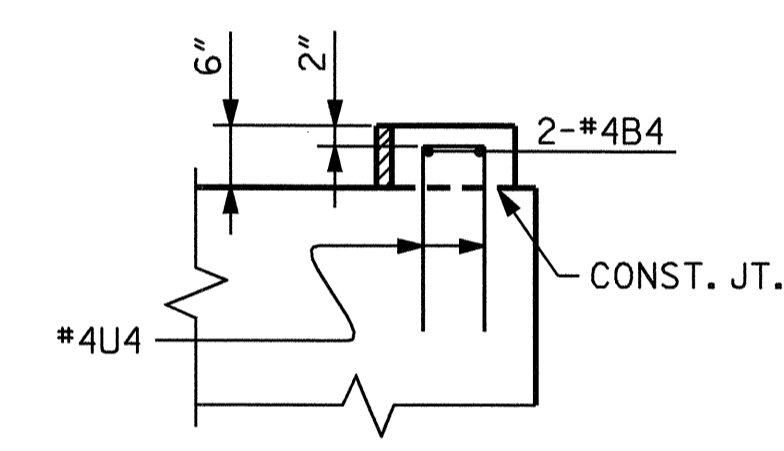


PLAN



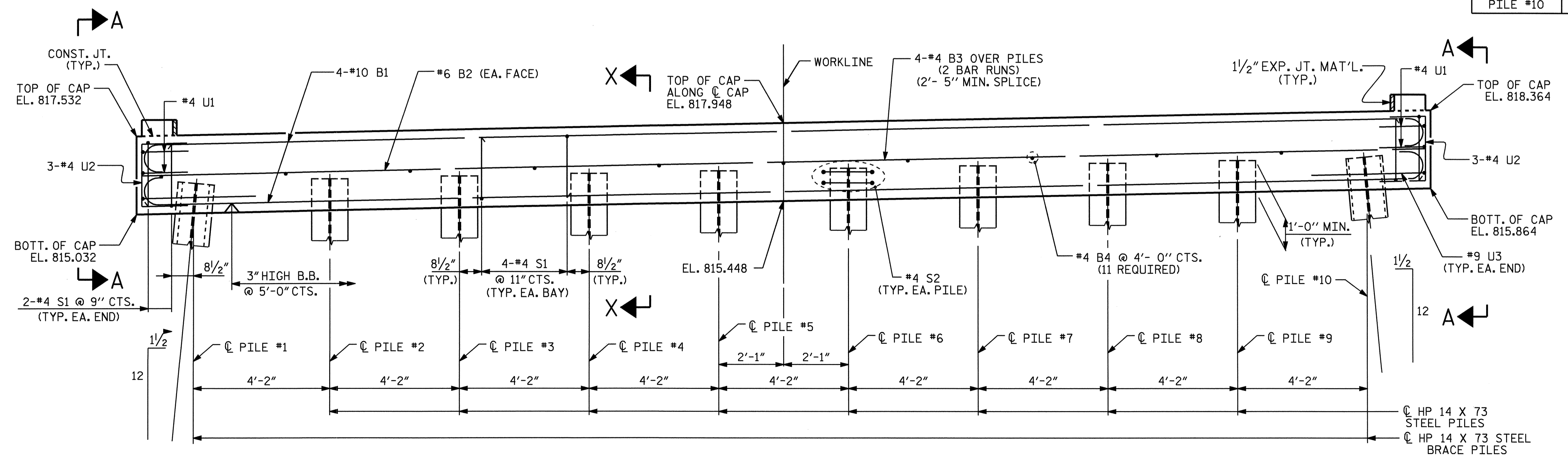
PLAN

PILE #	ELEVATION
PILE #1	816.084
PILE #2	816.168
PILE #3	816.251
PILE #4	816.334
PILE #5	816.417
PILE #6	816.501
PILE #7	816.584
PILE #8	816.668
PILE #9	816.751
PILE #10	816.834



ELEVATION

DETAIL "A"



ELEVATION

(INVERT ALTERNATE STIRRUPS.)

PROJECT NO. B-3847
 GUILFORD COUNTY
 STATION: 14+60.00 -L-

SHEET 1 OF 2

STATE OF NORTH CAROLINA
 DEPARTMENT OF TRANSPORTATION
 RALEIGH

SUBSTRUCTURE BENT #1

REVISIONS						SHEET NO.
NO.	BY	DATE	NO.	BY	DATE	
1			3			5-16
2			4			TOTAL SHEETS 23

DRAWN BY : M. G. SHAIKH DATE : 08-17-05
 CHECKED BY : D. A. GLADDEN DATE : 09-21-05

