

5/28/05

TGS ENGINEERS  
SUITE 141  
975 WALNUT STREET  
CARY, NC 27511  
PH (919) 319-8850

PROJECT REFERENCE NO. B-3652	SHEET NO. 5
ROADWAY DESIGN ENGINEER CRAIG PARKER	HYDRAULICS ENGINEER STEPHEN T. STEPHENS
2/1/05	2-17-05

BM-1 S 57°06'35.0"W FOR A DISTANCE OF 80.37'  
FROM MONUMENT B3652-2 Elev 788.07  
PAINTED BOLT ON TOP OF FIRE HYDRANT ON  
SOUTH SIDE OF MAIN STREET AT WEST END OF  
PROJECT.

BM-2 -BL- Sta 12+68.19 105.98 LT Elev 747.50  
RAILROAD SPIKE IN BASE OF 20' LOCUST TREE ON  
NORTH SIDE OF MAIN STREET AND ON WEST  
SIDE OF CREEK.

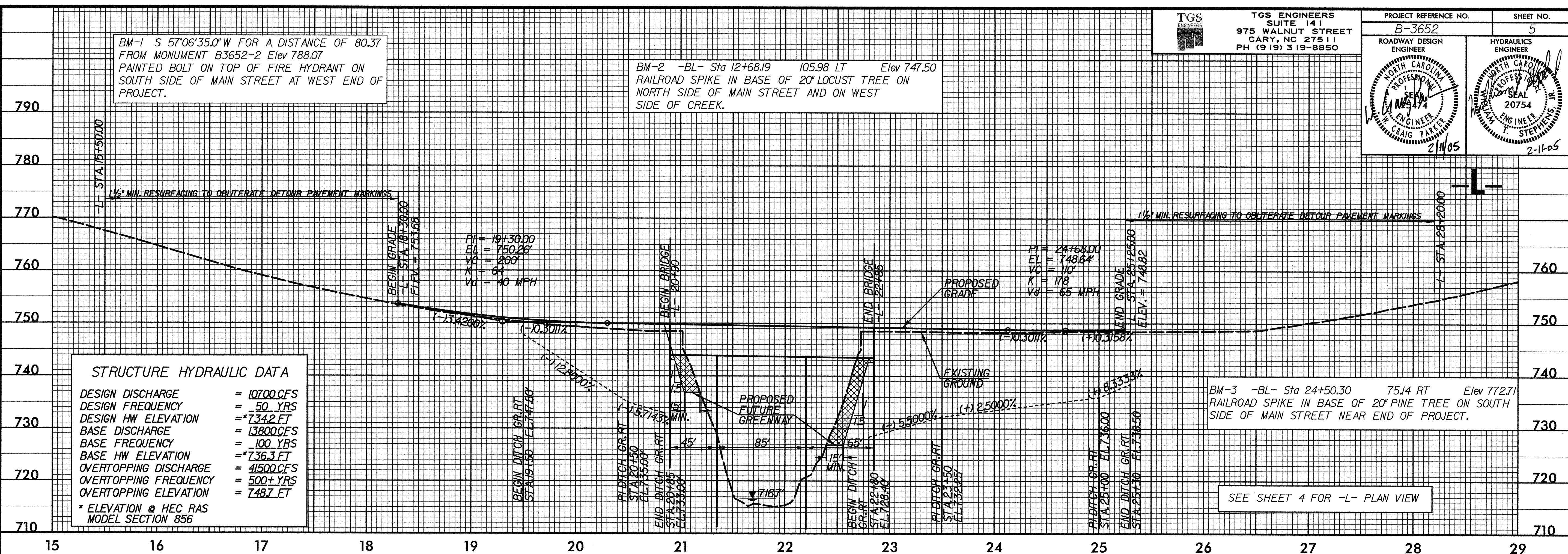
BM-3 -BL- Sta 24+50.30 75.14 RT Elev 772.71  
RAILROAD SPIKE IN BASE OF 20' PINE TREE ON SOUTH  
SIDE OF MAIN STREET NEAR END OF PROJECT.

**STRUCTURE HYDRAULIC DATA**

DESIGN DISCHARGE	= 10700 CFS
DESIGN FREQUENCY	= 50 YRS
DESIGN HW ELEVATION	= 734.2 FT
BASE DISCHARGE	= 13800 CFS
BASE FREQUENCY	= 100 YRS
BASE HW ELEVATION	= 736.3 FT
OVERTOPPING DISCHARGE	= 41500 CFS
OVERTOPPING FREQUENCY	= 500± YRS
OVERTOPPING ELEVATION	= 748.7 FT

\* ELEVATION @ HEC RAS MODEL SECTION 856

SEE SHEET 4 FOR -L- PLAN VIEW

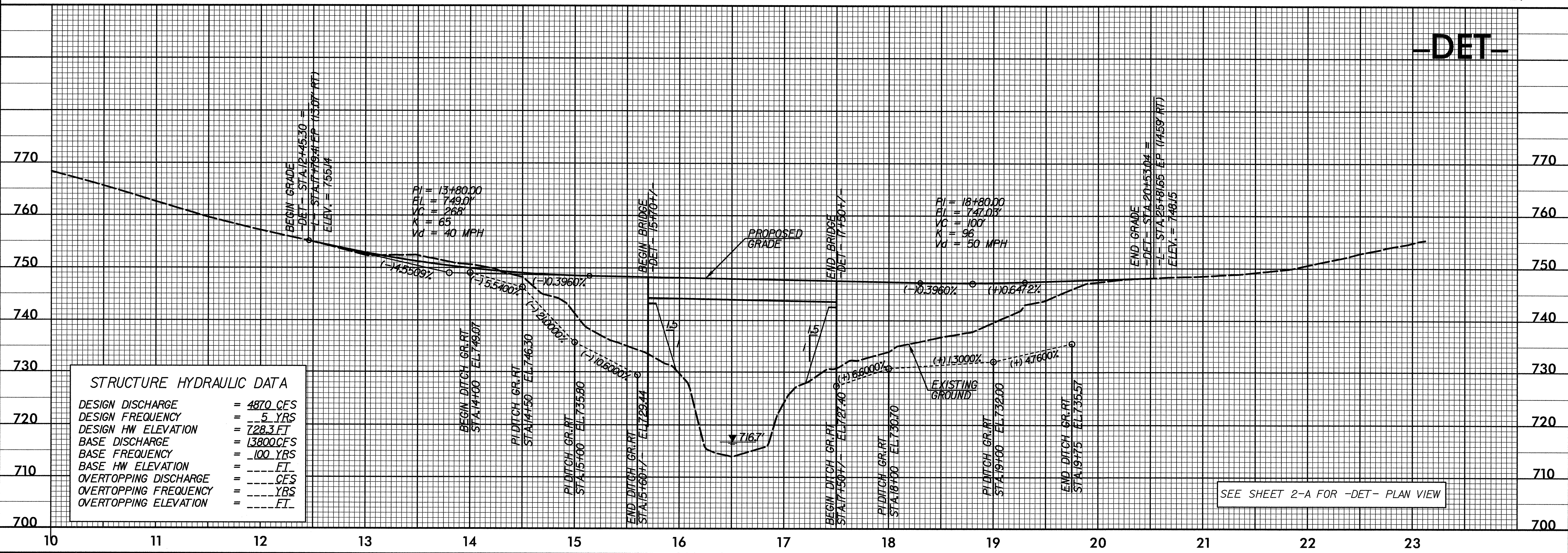


**-DET-**

**STRUCTURE HYDRAULIC DATA**

DESIGN DISCHARGE	= 4870 CFS
DESIGN FREQUENCY	= 5 YRS
DESIGN HW ELEVATION	= 728.3 FT
BASE DISCHARGE	= 13800 CFS
BASE FREQUENCY	= 100 YRS
BASE HW ELEVATION	= FT
OVERTOPPING DISCHARGE	= CFS
OVERTOPPING FREQUENCY	= YRS
OVERTOPPING ELEVATION	= FT

SEE SHEET 2-A FOR -DET- PLAN VIEW



SYTIME  
L:\Projects\B3652\Drawings\Profile\Profile.dwg  
5/28/05 11:20 AM