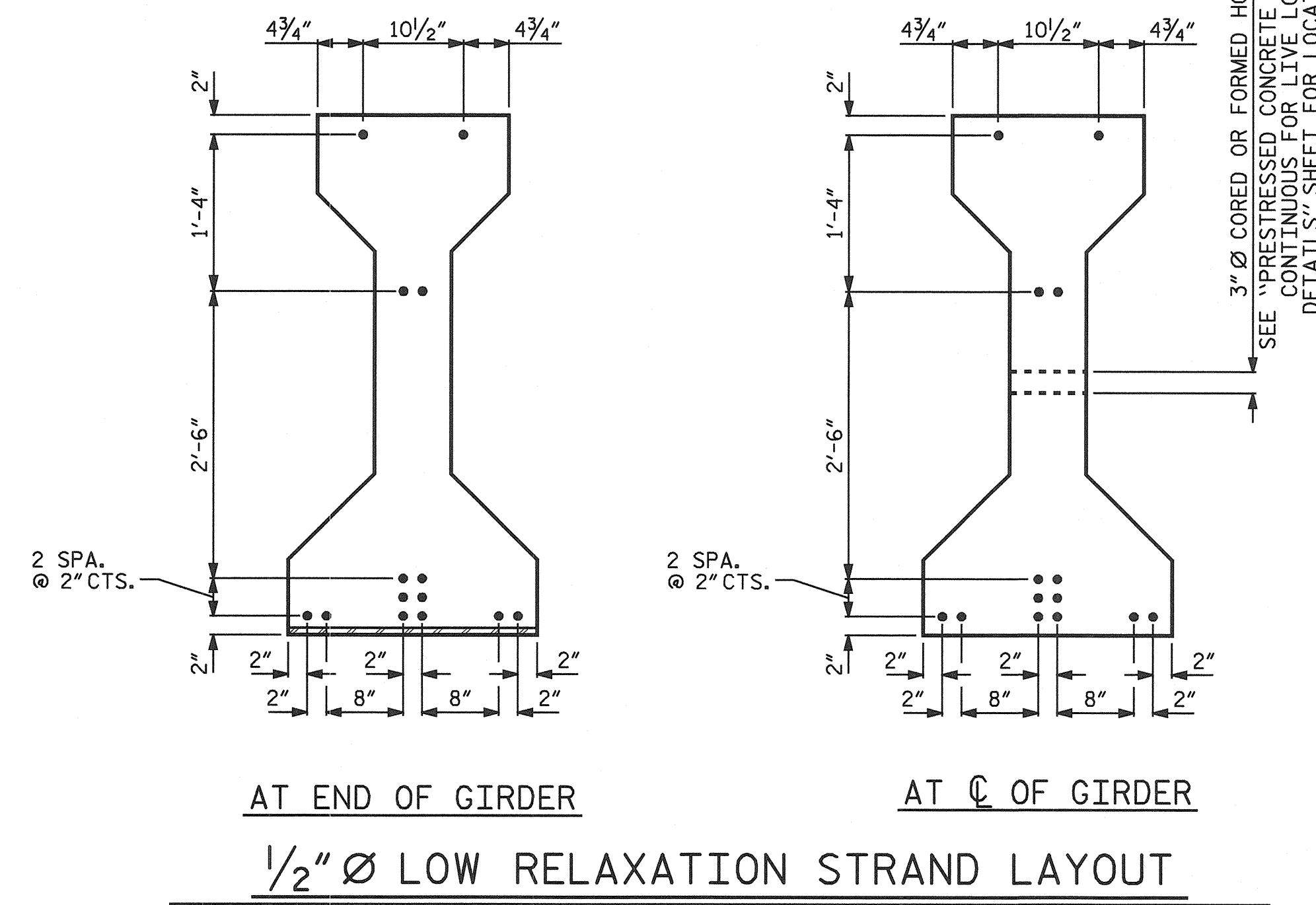


\* FOR S7 BARS, SEE  
DETAIL "A" OF "PRESTRESSED  
CONCRETE GIRDER CONTINUOUS  
FOR LIVE LOAD DETAILS" SHEET



**1/2" Ø L. R. GRADE 270 STRANDS**

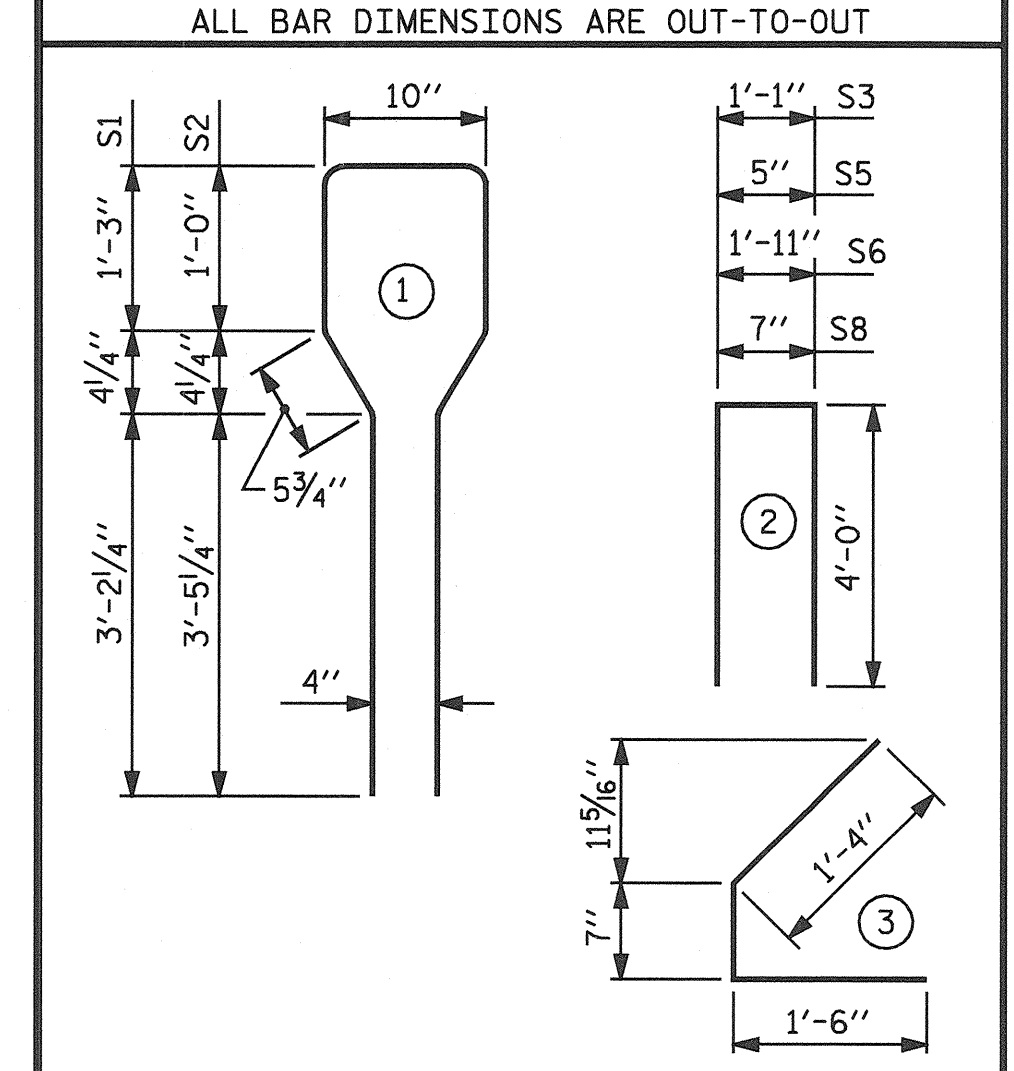
| AREA<br>(SQUARE INCHES) | ULTIMATE<br>STRENGTH<br>(LBS. PER STRAND) | APPLIED<br>PRESTRESS<br>(LBS. PER STRAND) |
|-------------------------|---|---|
| 0.153                   | 41,300                                    | 30,980                                    |

**REINFORCING STEEL FOR ONE GIRDER**

| BAR  | NUMBER | SIZE | TYPE | LENGTH | WEIGHT |
|------|--------|------|------|--------|--------|
| S1   | 36     | #4   | 1    | 10'-8" | 257    |
| S2   | 12     | #6   | 1    | 10'-8" | 192    |
| S3   | 4      | #4   | 2    | 9'-1"  | 24     |
| S4   | 64     | #4   | 3    | 3'-5"  | 146    |
| S5   | 6      | #4   | 2    | 8'-5"  | 34     |
| S6   | 1      | #4   | 2    | 9'-11" | 7      |
| * S7 | 6      | #5   | STR  | 3'-8"  | 23     |
| S8   | 4      | #4   | 2    | 8'-7"  | 23     |
| S9   | 1      | #3   | STR  | 1'-10" | 1      |

\* NOTE: S7 BARS SHALL BE BENT BEFORE SHIPMENT. HEAT BENDING SHALL NOT BE ALLOWED.

**BAR TYPES**



**QUANTITIES FOR ONE GIRDER**

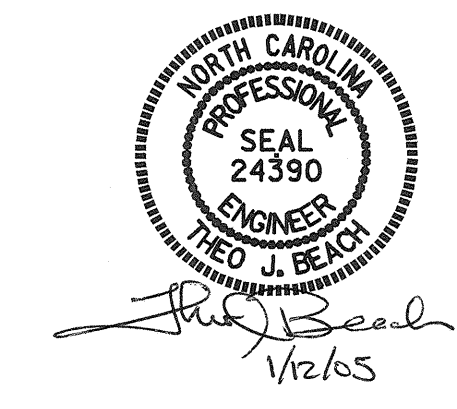
|                | REINFORCING<br>STEEL | 5,000 PSI<br>CONCRETE | 1/2" Ø L.R.<br>STRANDS |
|----------------|----------------------|-----------------------|------------------------|
|                | LB.                  | C.Y.                  | No.                    |
| FOR ONE GIRDER | 707                  | 8.8                   | 14                     |

**GIRDERS REQUIRED**

| NUMBER | LENGTH     | TOTAL LENGTH |
|--------|------------|--------------|
| 7      | 43'-2 1/2" | 302.46       |

PROJECT NO. B-3652  
GUILFORD COUNTY  
 STATION: 21+87.50 -L-

STATE OF NORTH CAROLINA  
 DEPARTMENT OF TRANSPORTATION  
 RALEIGH  
 AASHTO TYPE IV  
 PRESTRESSED CONCRETE GIRDER  
 CONTINUOUS FOR LIVE LOAD  
 SPAN "A"



ASSEMBLED BY : S.B. WILLIAMS DATE : 3-22-04  
 CHECKED BY : P.C. BREWER DATE : 5-27-04  
 DRAWN BY : ELR 8/91 EEM/RGW  
 CHECKED BY : GRP 8/91 REV. 7/17/98 RWW/LES  
 REV. 10/17/00 RWW/LES

| REVISIONS |     |       |     |     |       | SHEET NO.<br>S-10  |
|-----------|-----|-------|-----|-----|-------|--------------------|
| NO.       | BY: | DATE: | NO. | BY: | DATE: |                    |
| 1         |     |       | 3   |     |       | TOTAL SHEETS<br>42 |
| 2         |     |       | 4   |     |       |                    |