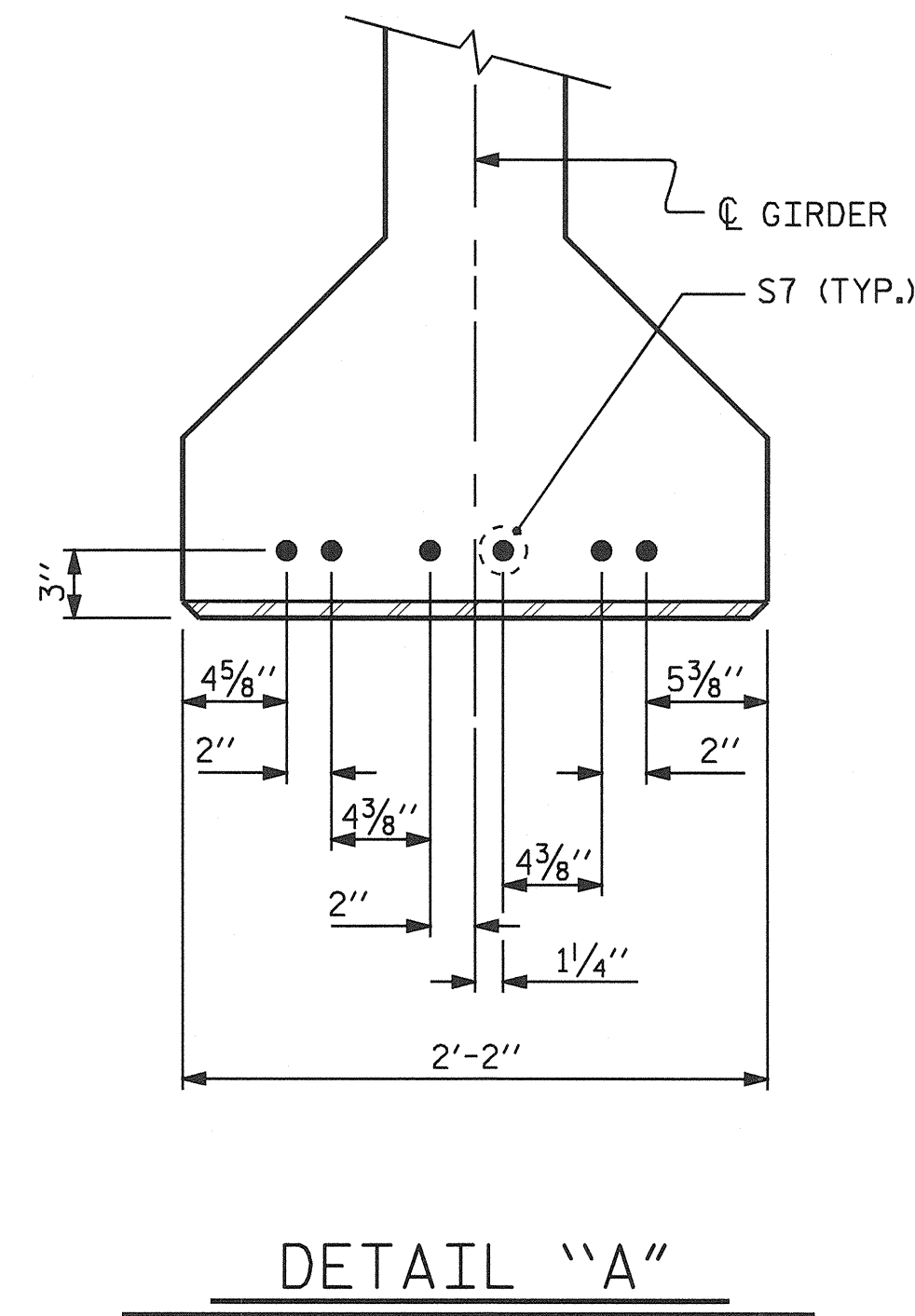
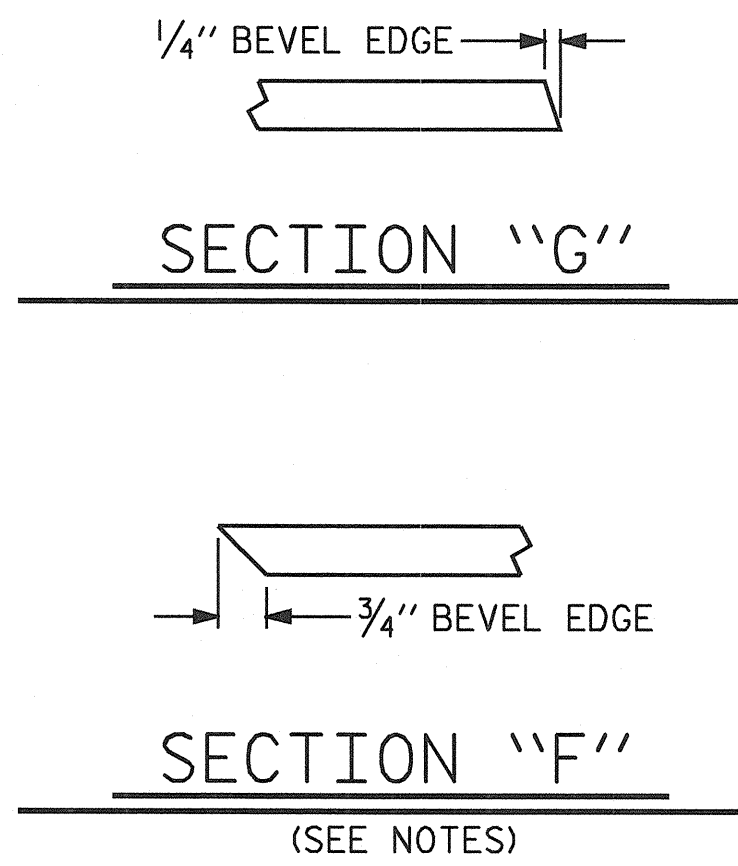


**EMBEDDED PLATE "B-1" DETAILS**  
(2 REQ'D PER GIRDER)



**DETAIL "A"**

**NOTES**

ALL PRESTRESSING STRANDS SHALL BE 7-WIRE LOW-RELAXATION GRADE 270 STRANDS AND SHALL CONFORM TO AASHTO M203 EXCEPT FOR SAMPLING REQUIREMENTS WHICH SHALL BE IN ACCORDANCE WITH THE STANDARD SPECIFICATIONS.

TIE ROD ASSEMBLY SHALL BE AASHTO M270 GRADE 36 STRUCTURAL STEEL.

APPLY EPOXY PROTECTIVE COATING TO END OF GIRDER SURFACES INDICATED IN ELEVATION VIEW. FOR EPOXY PROTECTIVE COATING, SEE SPECIAL PROVISIONS.

EMBEDDED PLATE "B-1" SHALL BE GALVANIZED IN ACCORDANCE WITH THE STANDARD SPECIFICATIONS. BEVEL EDGES OF PLATE "B-1" TO GIVE CLOSE FIT BUT NOT TIGHT FIT TO STEEL CASTING FORM.

ANCHOR STUDS SHALL CONFORM TO AASHTO M169 GRADES 1010 THROUGH 1020 OR APPROVED EQUAL, AND SHALL MEET THE TYPE "B" REQUIREMENTS OF SUBSECTION 7.3 OF THE ANSI/AASHTO/AWS D1.5 BRIDGE WELDING CODE.

AT ENDS OF GIRDERS TO BE EMBEDDED IN CONCRETE DIAPHRAGMS, PRESTRESSING STRANDS MAY EXTEND A MAXIMUM OF 2" BEYOND THE GIRDER ENDS. OTHERWISE, PRESTRESSING STRANDS SHALL BE CUT FLUSH WITH THE GIRDER ENDS.

THE TRANSFER OF LOAD FROM THE ANCHORAGES TO THE GIRDER SHALL BE DONE WHEN CONCRETE HAS REACHED A COMPRESSIVE STRENGTH OF NOT LESS THAN 4000 PSI FOR SPANS "A" AND "C", AND 5700 PSI FOR SPAN "B".

DEPENDING ON THE TYPE OF SYSTEM USED TO SUPPORT THE DECK SLAB FORMS, PRESET ANCHORS MAY BE NECESSARY IN THE PRESTRESSED CONCRETE GIRDER.

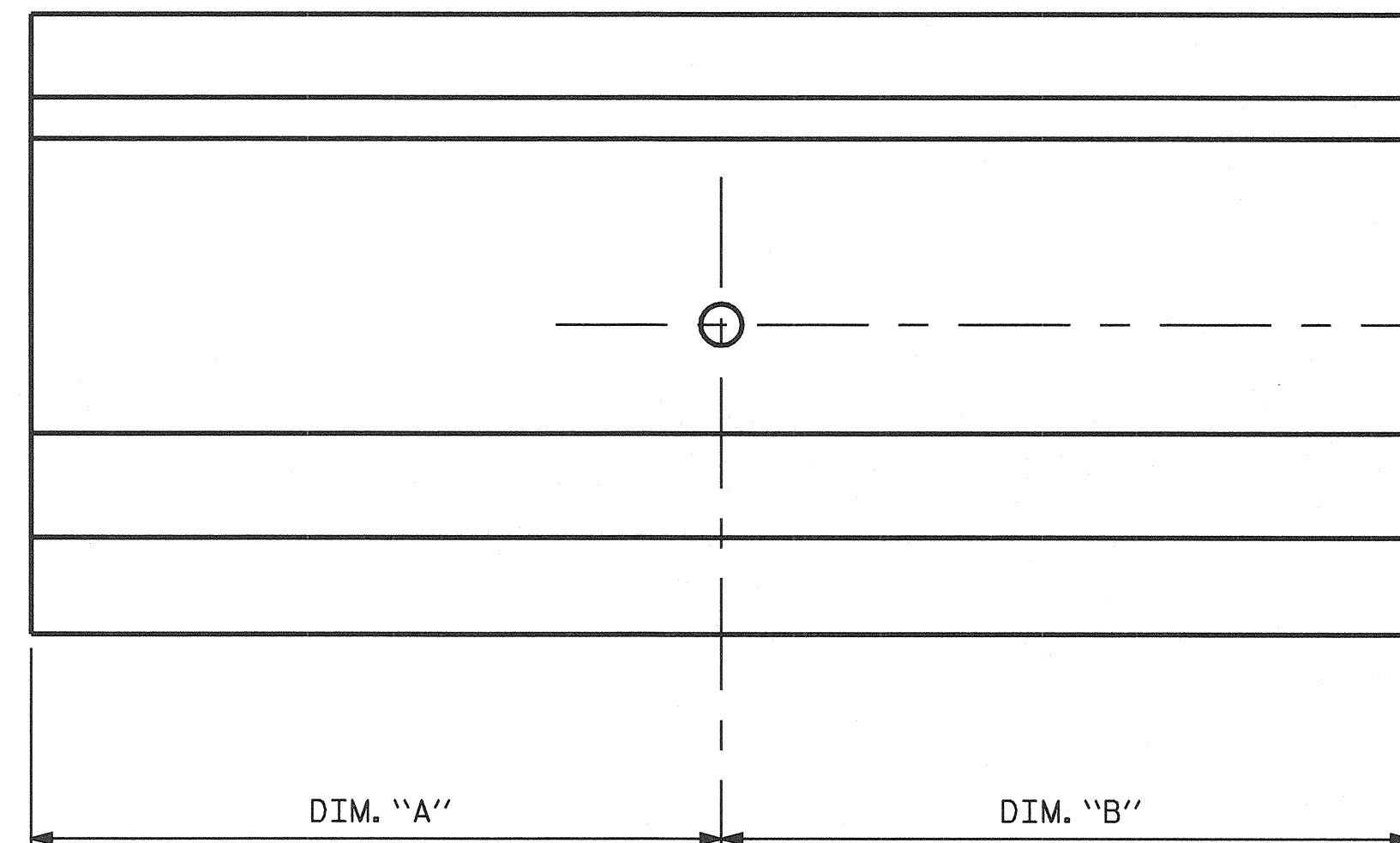
THE TOP SURFACE OF THE GIRDER, EXCLUDING THE OUTSIDE 4", SHALL BE RAKED TO A DEPTH OF 1/4".

FOR VERTICAL CRACKS IN PRESTRESSED CONCRETE GIRDERS PRIOR TO DETENSIONING, SEE SPECIAL PROVISIONS.

ALL REINFORCING STEEL SHALL BE GRADE 60.

FOR PRESTRESSED CONCRETE MEMBERS, SEE SPECIAL PROVISIONS.

UPSTATION →



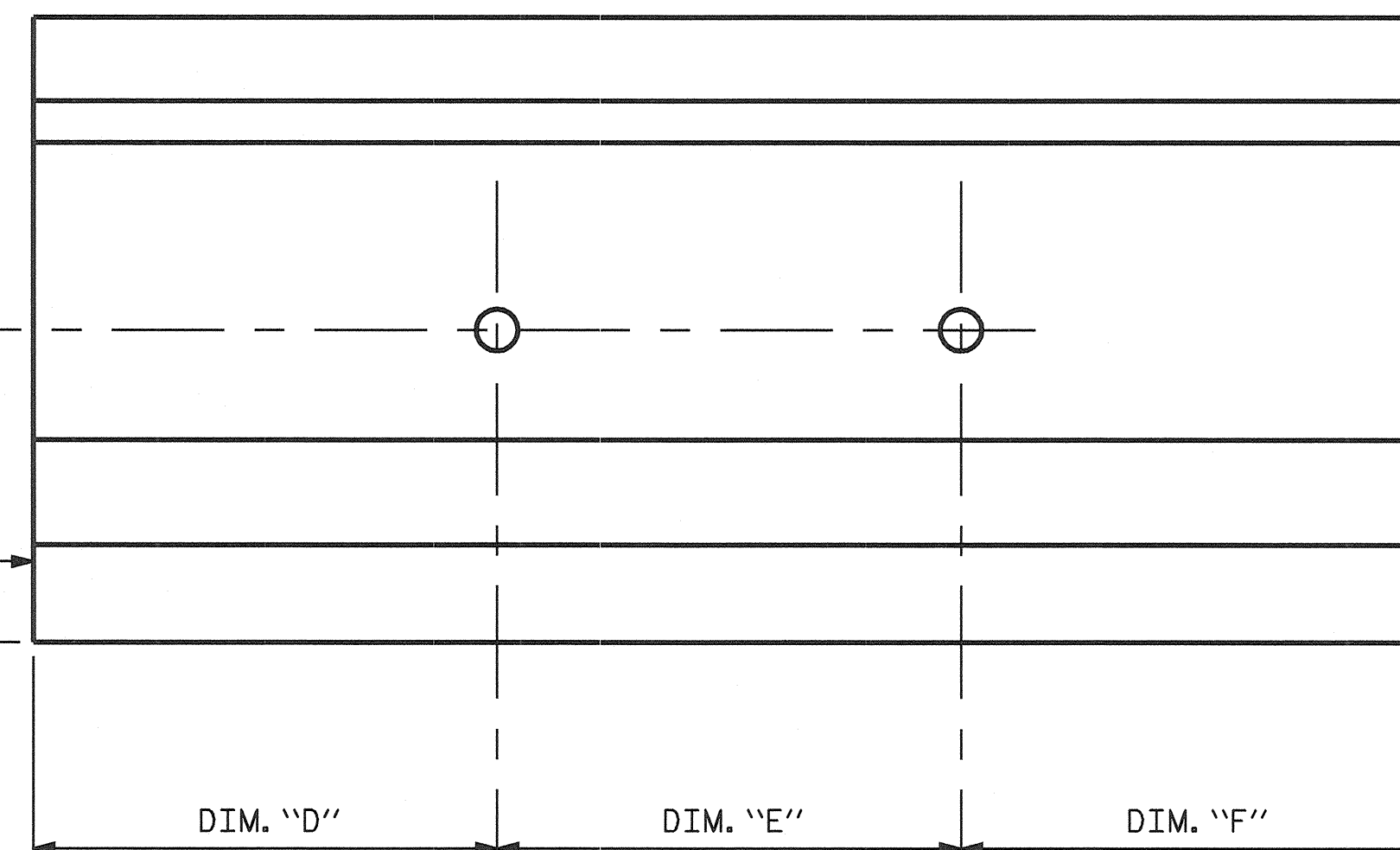
**ELEVATION**

3" Ø CORED OR FORMED HOLE

DIM. "C"

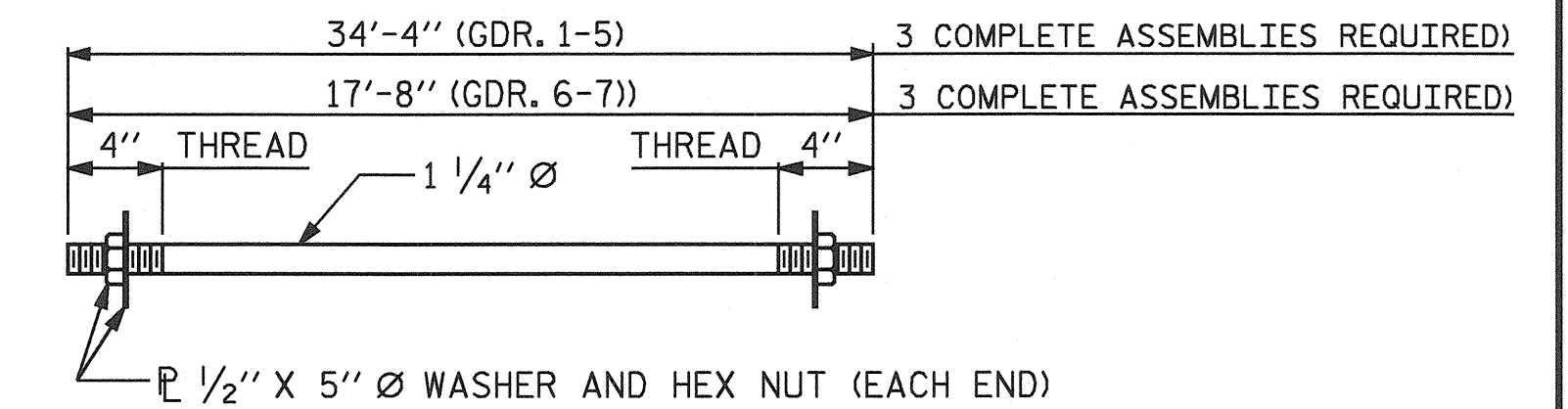
PRESTRESSED CONCRETE GIRDER

UPSTATION →

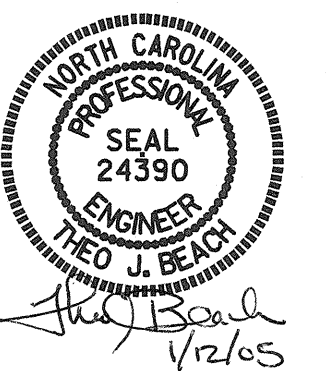


**ELEVATION**

**TIE ROD PLACEMENT DETAILS**



**1 1/4" Ø TIE ROD ASSEMBLY**



TIE ROD PLACEMENT TABLE																				
SPAN "A"							SPAN "B"							SPAN "C"						
	DIM. "A"	DIM. "B"	DIM. "C"	DIM. "D"	DIM. "E"	DIM. "F"		DIM. "A"	DIM. "B"	DIM. "C"	DIM. "D"	DIM. "E"	DIM. "F"		DIM. "A"	DIM. "B"	DIM. "C"	DIM. "D"	DIM. "E"	DIM. "F"
GIRDER A1	19'-7 1/4"	23'-7 1/4"	2'-8"	—	—	—	GIRDER B1	40'-1"	44'-1"	2'-8"	—	—	—	GIRDER C1	29'-7 1/4"	33'-7 1/4"	2'-8"	—	—	—
GIRDER A2	19'-7 1/4"	23'-7 1/4"	2'-8"	—	—	—	GIRDER B2	40'-1"	44'-1"	2'-8"	—	—	—	GIRDER C2	29'-7 1/4"	33'-7 1/4"	2'-8"	—	—	—
GIRDER A3	19'-7 1/4"	23'-7 1/4"	2'-8"	—	—	—	GIRDER B3	40'-1"	44'-1"	2'-8"	—	—	—	GIRDER C3	29'-7 1/4"	33'-7 1/4"	2'-8"	—	—	—
GIRDER A4	19'-7 1/4"	23'-7 1/4"	2'-8"	—	—	—	GIRDER B4	40'-1"	44'-1"	2'-8"	—	—	—	GIRDER C4	29'-7 1/4"	33'-7 1/4"	2'-8"	—	—	—
GIRDER A5	—	—	2'-8"	19'-7 1/4"	4'-0"	19'-7 1/4"	GIRDER B5	—	—	2'-8"	40'-1"	4'-0"	40'-1"	GIRDER C5	—	—	2'-8"	29'-7 1/4"	4'-0"	29'-7 1/4"
GIRDER A6	23'-7 1/4"	19'-7 1/4"	2'-8"	—	—	—	GIRDER B6	44'-1"	40'-1"	2'-8"	—	—	—	GIRDER C6	33'-7 1/4"	29'-7 1/4"	2'-8"	—	—	—
GIRDER A7	23'-7 1/4"	19'-7 1/4"	2'-8"	—	—	—	GIRDER B7	44'-1"	40'-1"	2'-8"	—	—	—	GIRDER C7	33'-7 1/4"	29'-7 1/4"	2'-8"	—	—	—

PROJECT NO. B-3652  
GUILFORD COUNTY  
 STATION: 21+87.50 -L-

STATE OF NORTH CAROLINA  
 DEPARTMENT OF TRANSPORTATION  
 RALEIGH

**PRESTRESSED CONCRETE GIRDER  
 CONTINUOUS FOR LIVE LOAD  
 DETAILS**

DRAWN BY: S.B. WILLIAMS DATE: 3/22/04  
 CHECKED BY: P.C. BREWER DATE: 5/27/04

11-JAN-2005 08:15  
 E:\sqd\vd\v8 work\b3652\sbwilliams\Microstation\B3652.sd\_G1.01.dgn

REVISIONS						SHEET NO.
NO.	BY:	DATE:	NO.	BY:	DATE:	S-13
1			3			TOTAL SHEETS
2			4			42