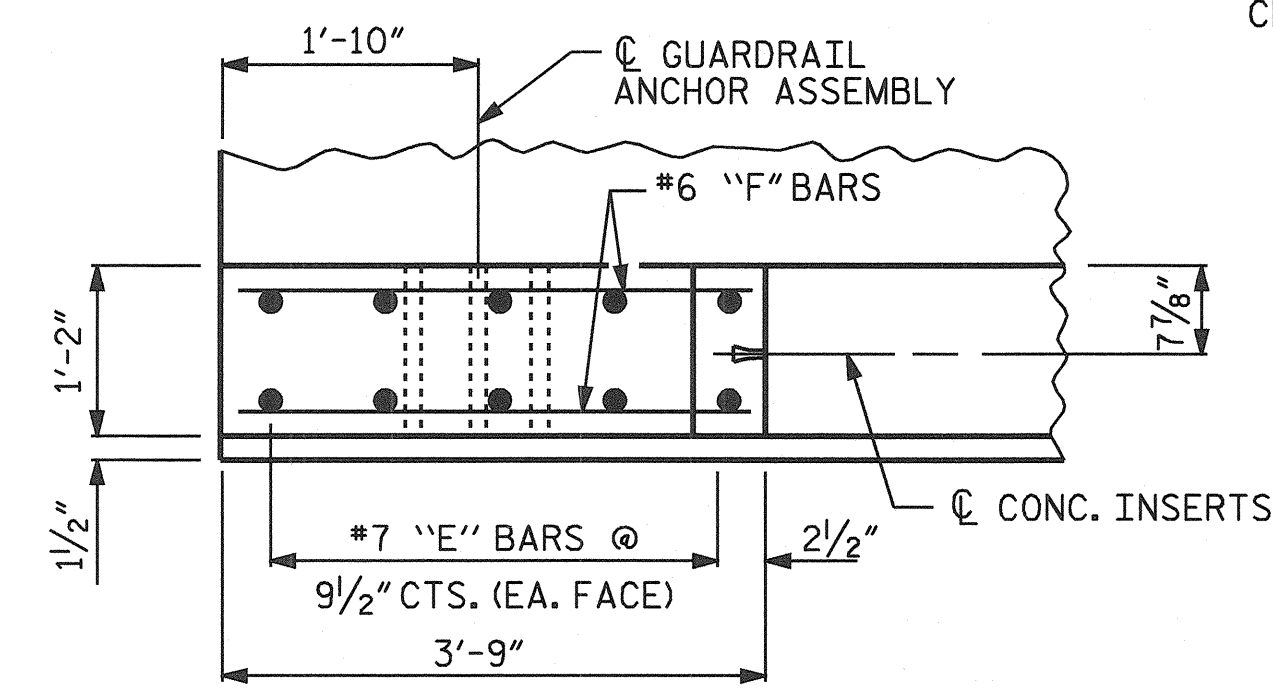
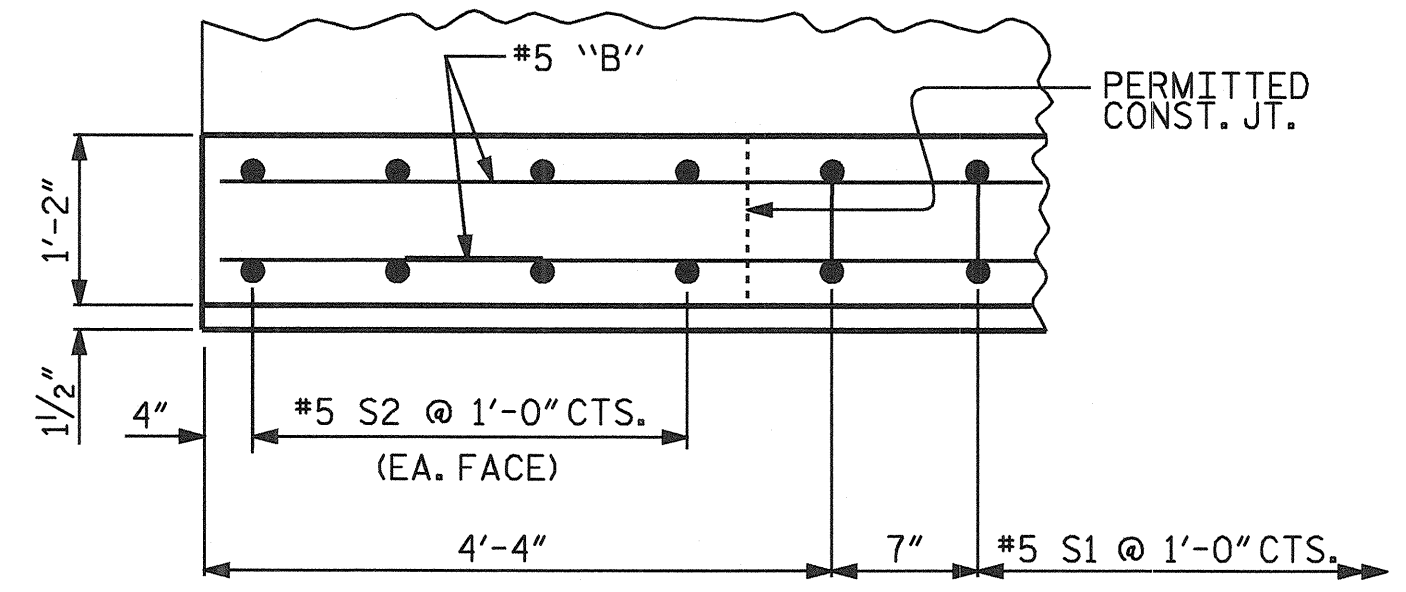


PLAN OF RIGHT SIDE PARAPET

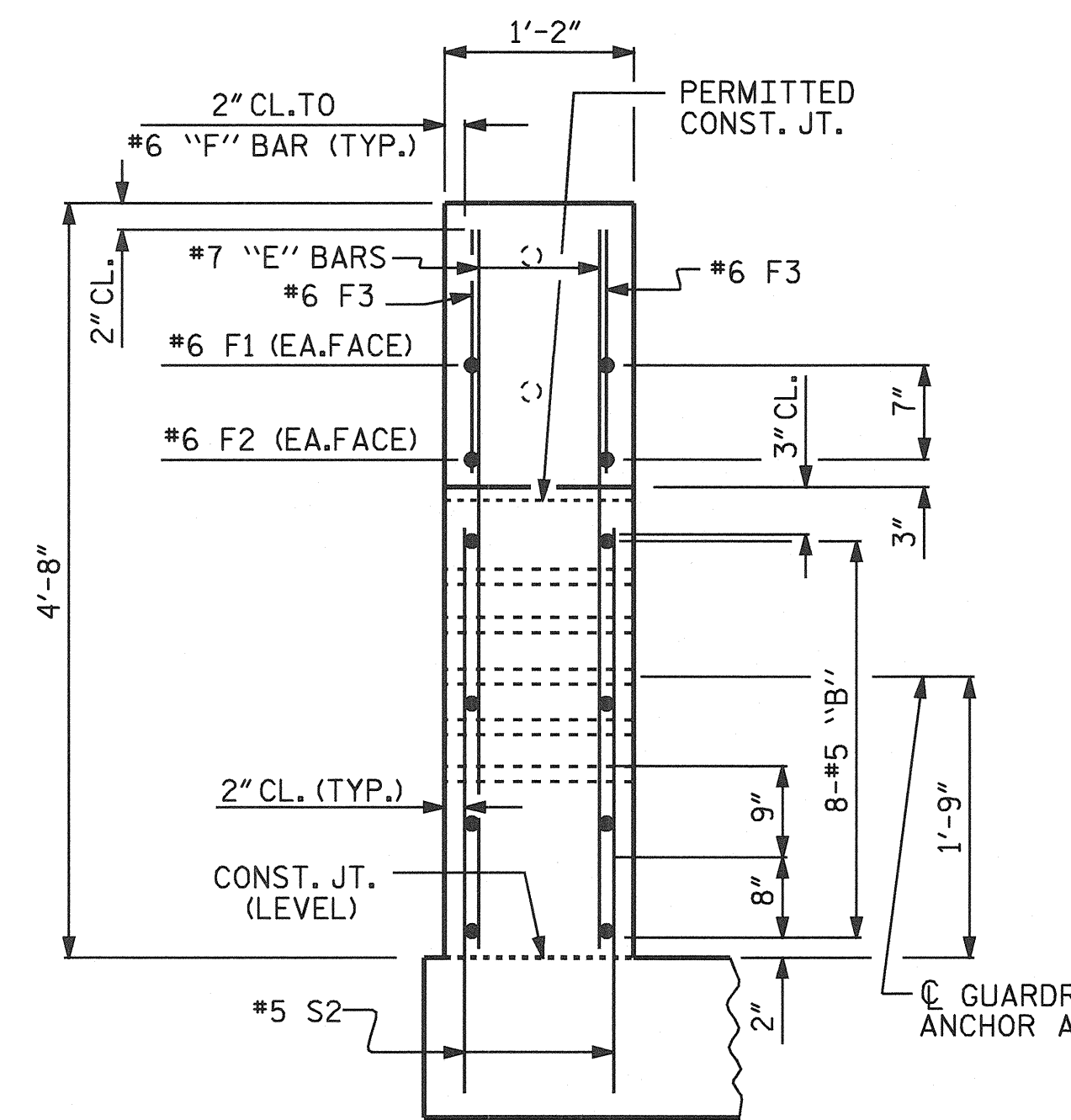
#5 S1 BARS MAY BE SHIFTED SLIGHTLY IN ORDER TO MAINTAIN A 2" MINIMUM CLEARANCE TO THE 1/2" EXPANSION JOINT MATERIAL IN THE PARAPET.



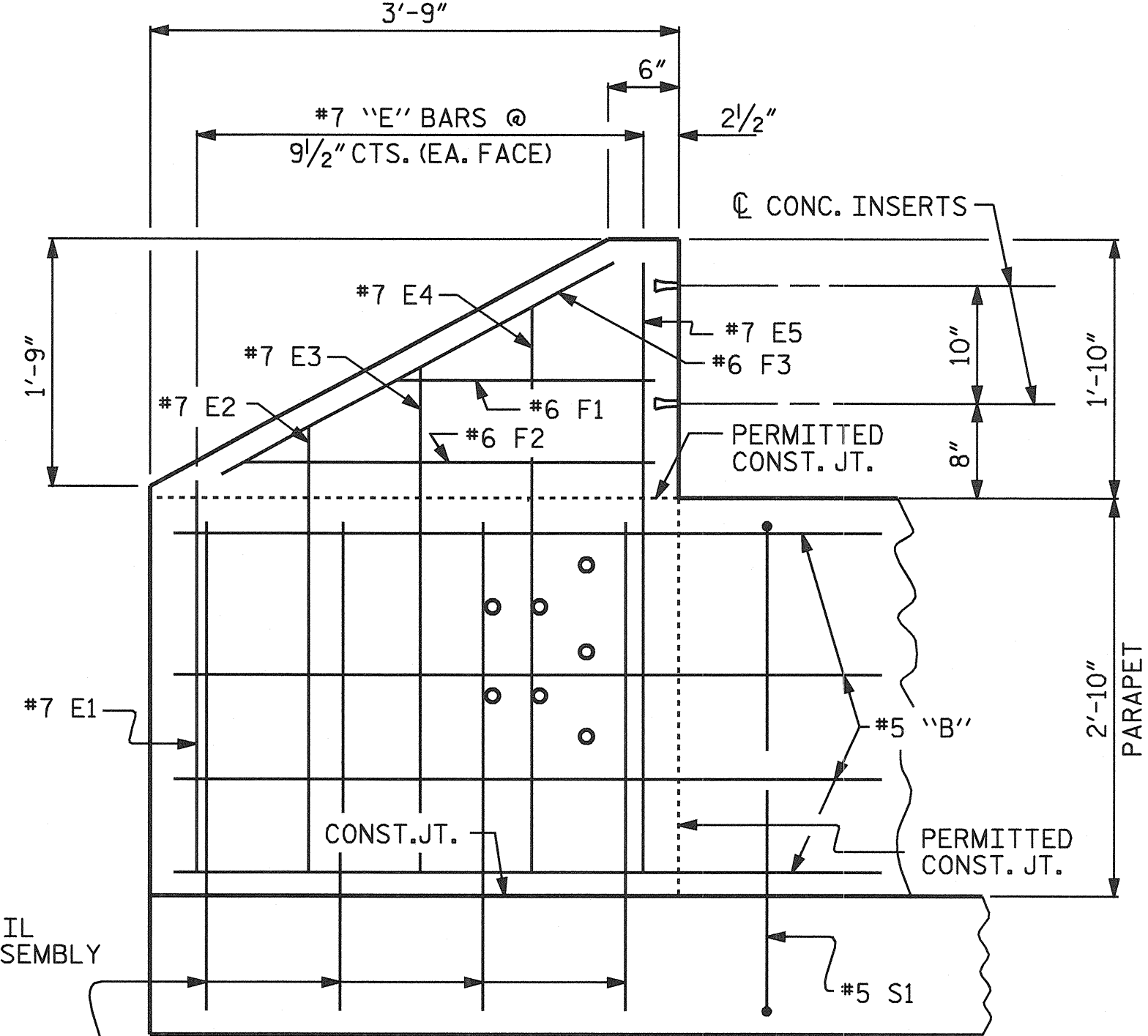
PLAN OF END POST



PLAN OF PARAPET



END VIEW



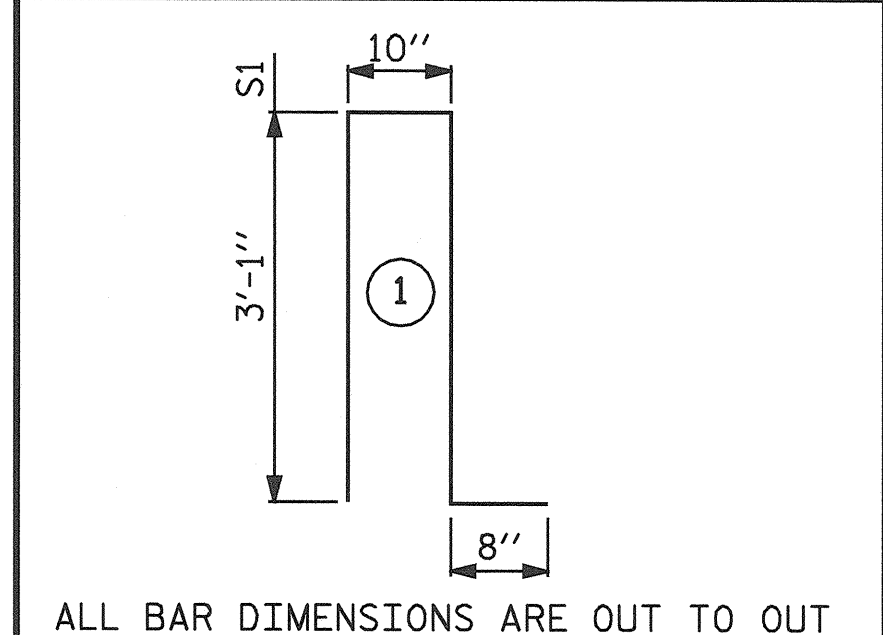
ELEVATION

RIGHT SIDE PARAPET AND END POST FOR TWO BAR RAIL

BILL OF MATERIAL

RIGHT SIDE PARAPET AND END POSTS					
BAR	NO.	SIZE	TYPE	LENGTH	WEIGHT
*B10	8	#5	STR	43'-6"	363
*B11	16	#5	STR	44'-1"	736
*B12	16	#5	STR	33'-6"	559
*E1	4	#7	STR	2'-10"	23
*E2	4	#7	STR	3'-3"	27
*E3	4	#7	STR	3'-8"	30
*E4	4	#7	STR	4'-1"	33
*E5	4	#7	STR	4'-4"	35
*F1	4	#6	STR	1'-11"	12
*F2	4	#6	STR	3'-1"	19
*F3	4	#6	STR	3'-4"	20
*S1	186	#5	1	7'-8"	1487
*S2	16	#5	STR	3'-4"	56
* EPOXY COATED REINF. STEEL = 3400 LBS					
CLASS AA CONCRETE					24.1 C.Y.
1'-2" X 2'-10" CONCRETE PARAPET					192.83 L.F.
* THESE BARS ARE EPOXY COATED					

BAR TYPES



NOTES:

PARAPETS IN A CONTINUOUS UNIT SHALL NOT BE CAST UNTIL ALL SLAB CONCRETE IN THE UNIT HAS BEEN CAST AND HAS REACHED A MINIMUM COMPRESSIVE STRENGTH OF 3000 PSI.

FOR DETAILS OF CONCRETE INSERTS, SEE "RAIL POST SPACING AND END OF RAIL DETAILS" SHEET.

FOR DETAILS OF GUARDRAIL ANCHOR ASSEMBLIES, SEE "GUARDRAIL ANCHORAGE DETAILS FOR METAL RAILS" SHEET.

ALL REINFORCING STEEL IN PARAPETS SHALL BE EPOXY COATED.

THE REINFORCING STEEL MAY BE SHIFTED SLIGHTLY AS NECESSARY TO CLEAR THE ANCHOR ASSEMBLY FOR 2 BAR METAL RAIL.

THE #5 S2 OR S4 BARS SHALL BE INSTALLED USING AN ADHESIVE ANCHORING SYSTEM AFTER SAWING THE JOINT. FOR ADHESIVELY ANCHORED BOLTS OR DOWELS, SEE SPECIAL PROVISIONS. THE YIELD LOAD OF THE #5 S2 OR S4 BARS IS 18.6 KIPS. FIELD TESTING OF THE ADHESIVE BONDING SYSTEM IS NOT REQUIRED.

THE JOINT IN DECK SHALL BE SAWED PRIOR TO THE CASTING OF THE PARAPET.

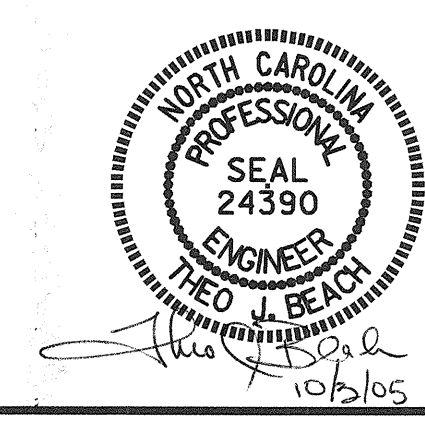
GROOVED CONTRACTION JOINTS 1/2" IN DEPTH, SHALL BE TOOLED IN ALL EXPOSED FACES OF PARAPET IN ACCORDANCE WITH ARTICLE 825-10(B) OF THE STANDARD SPECIFICATIONS. THE CONTRACTION JOINTS SHALL BE LOCATED AT A SPACING OF 8 FEET TO 10 FEET BETWEEN EXPANSION JOINTS. NO CONTRACTION JOINTS WILL BE REQUIRED FOR SEGMENTS LESS THAN 10 FEET IN LENGTH.

PROJECT NO. B-3652
GUILFORD COUNTY
 STATION: 21+87.50 -L-

SHEET 1 OF 2

STATE OF NORTH CAROLINA
 DEPARTMENT OF TRANSPORTATION
 RALEIGH

**SUPERSTRUCTURE
 CONCRETE PARAPET
 DETAILS
 (RIGHT SIDE)**



DRAWN BY: P.C. BREWER DATE: 12/10/04
 CHECKED BY: THEO BEACH DATE: 12/04

REVISIONS					SHEET NO.
NO.	BY:	DATE:	NO.	BY:	DATE:
1			3		
2			4		

TOTAL SHEETS: 42