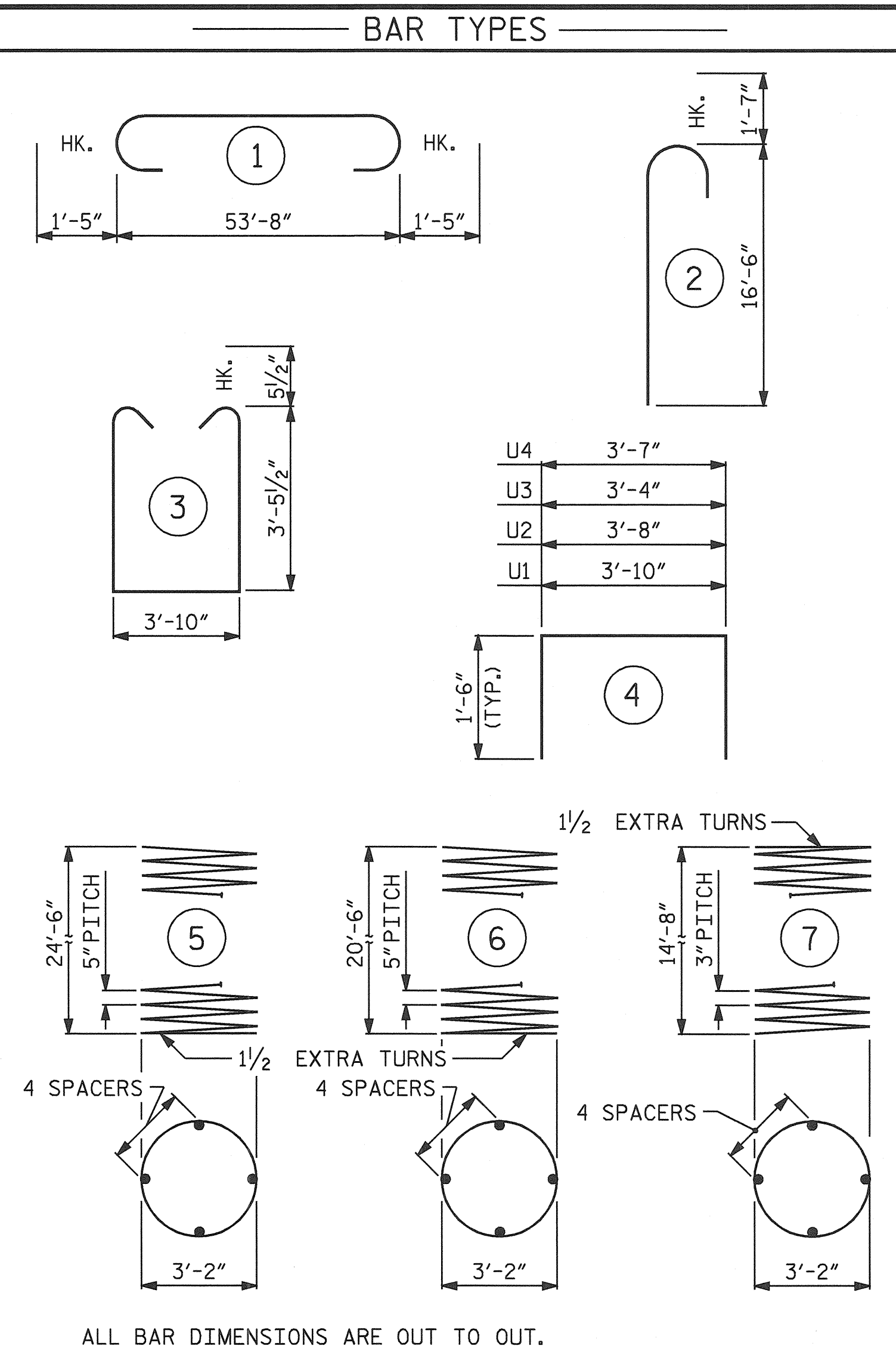


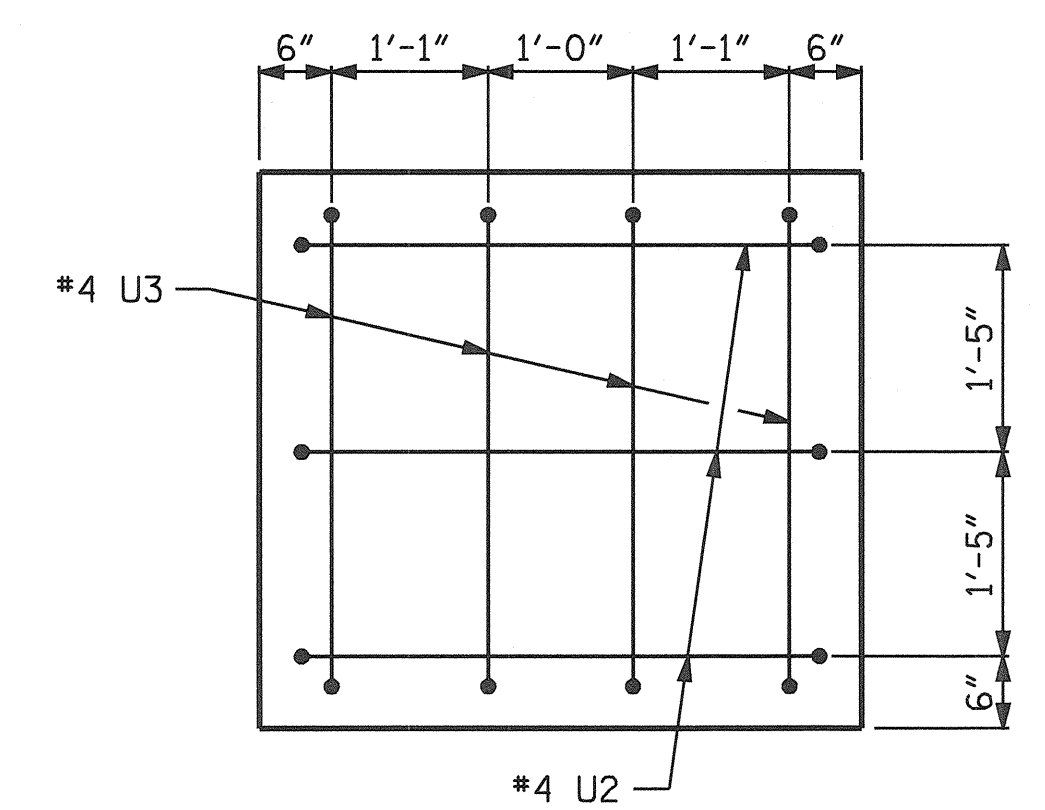
PLAN OF DRILLED PIERS



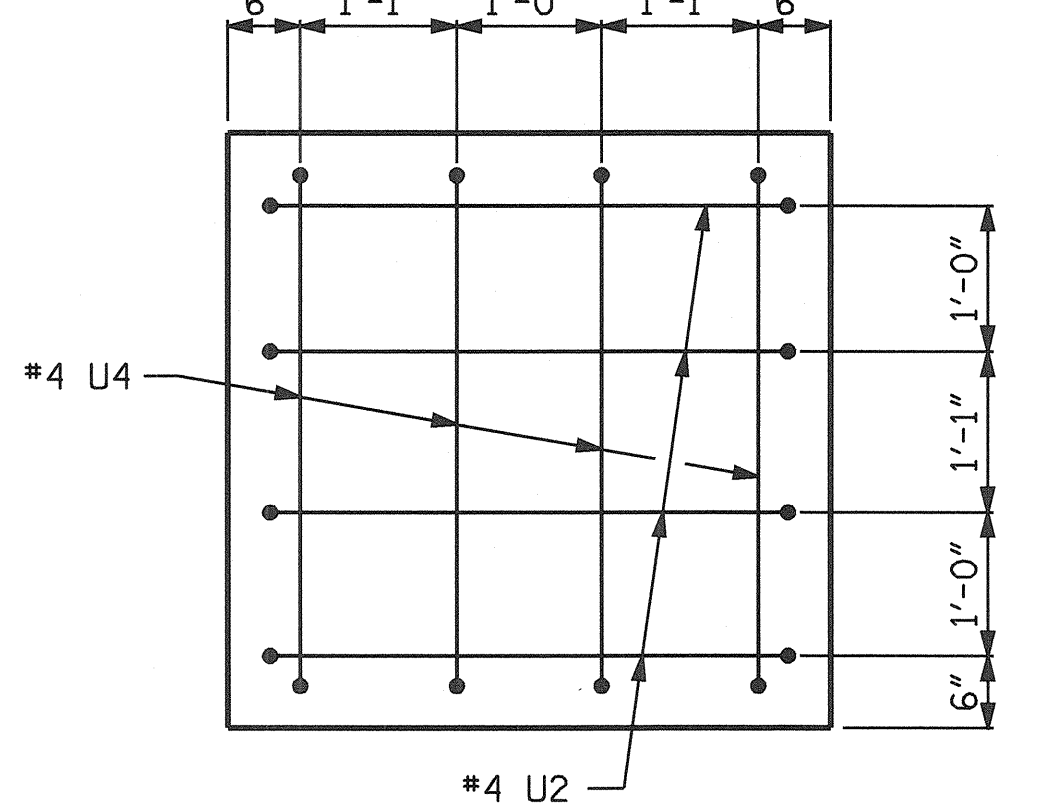
ALL BAR DIMENSIONS ARE OUT TO OUT.

BILL OF MATERIAL

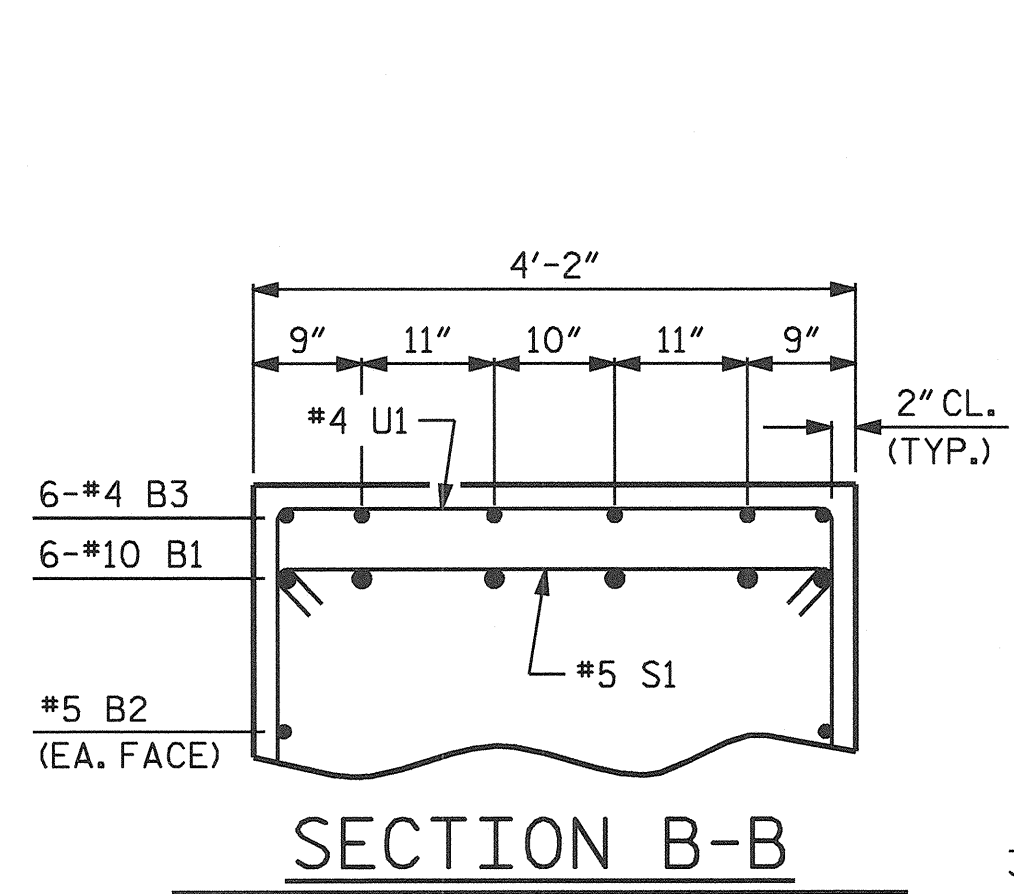
BENT No. 1					
BAR NO.	SIZE	TYPE	LENGTH	WEIGHT	
B1	12	#10	1	56'-6"	2917
B2	6	#5	STR	53'-10"	337
B3	12	#4	STR	19'-4"	155
B4	6	#4	STR	3'-4"	13
M1	24	#11	STR	34'-11"	4452
M2	12	#11	STR	30'-11"	1971
S1	62	#5	3	11'-8"	754
U1	61	#4	4	6'-10"	278
U2	7	#4	4	6'-8"	31
U3	4	#4	4	6'-4"	17
U4	4	#4	4	6'-7"	18
V1	36	#11	2	18'-1"	3459
REINFORCING STEEL					14,402 LBS.
SP-1	2	*	5	597'-5"	1246
SP-2	1	*	6	499'-6"	521
SP-3	3	**	7	599'-1"	1201
SPIRAL COLUMN REINFORCING STEEL					2,968 LBS.
* THE SP-1 AND SP-2 SPIRAL REINFORCING STEEL SHALL BE W31 OR D-31 COLD DRAWN WIRE OR #5 PLAIN OR DEFORMED BAR.					
** THE SP-3 SPIRAL REINFORCING STEEL SHALL BE W20 OR D-20 COLD DRAWN WIRE OR #4 PLAIN OR DEFORMED BAR.					
CLASS A CONCRETE (C.Y.)					
POUR #2 (COLUMN)					= 15.3
POUR #3 (CAP)					= 34.5
TOTAL					= 49.8
DRILLED PIERS:					
DRILLED PIER CONCRETE (C.Y.)					
POUR #1 (DRILLED PIER)					= 33.0
4'-0" Ø DRILLED PIER IN SOIL					= 47.0 LIN. FT.
4'-0" Ø DRILLED PIER NOT IN SOIL					= 24.0 LIN. FT.
PERMANENT STEEL CASING FOR 4'-0" Ø DRILLED PIER					= 47.0 LIN. FT.
CSL TUBES					= 314.0 LIN. FT.



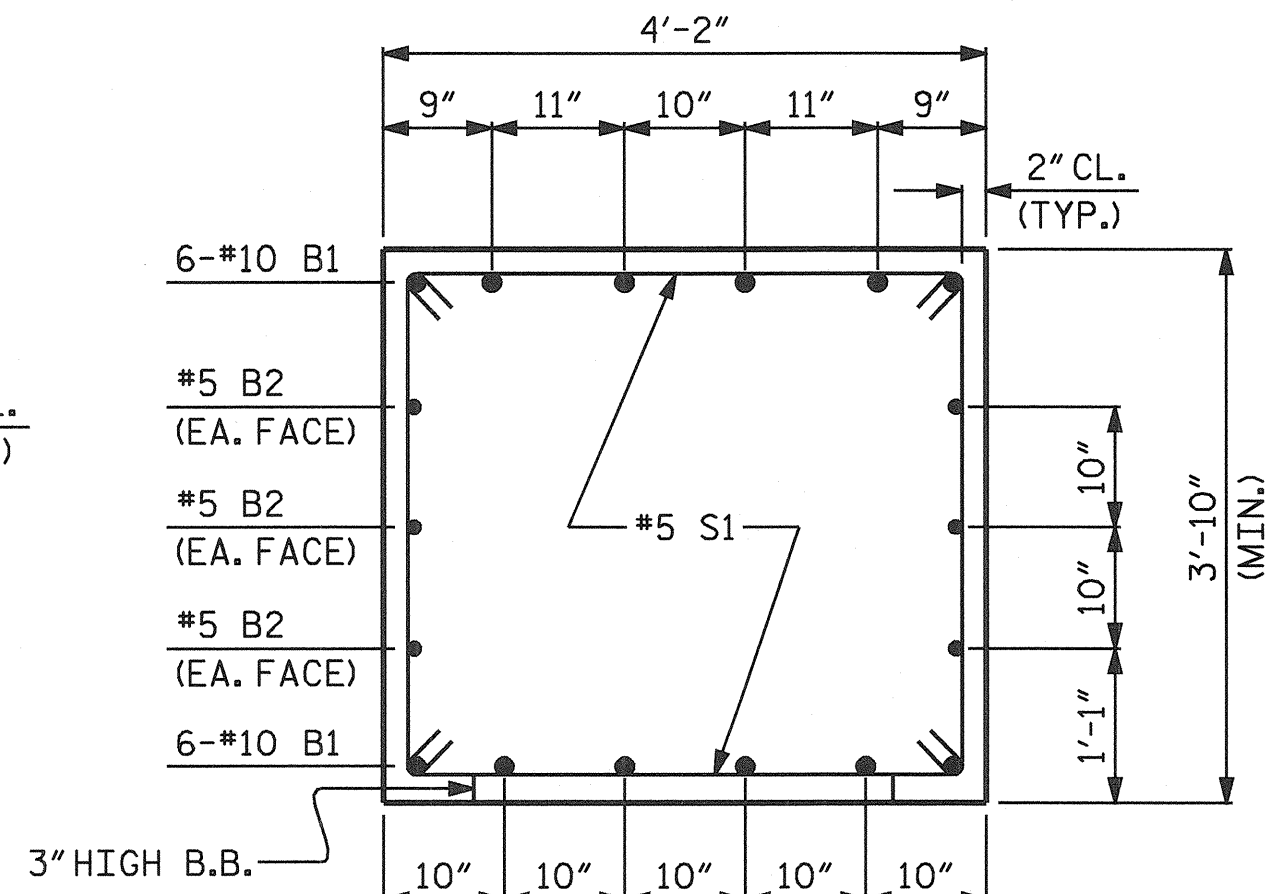
VIEW X-X



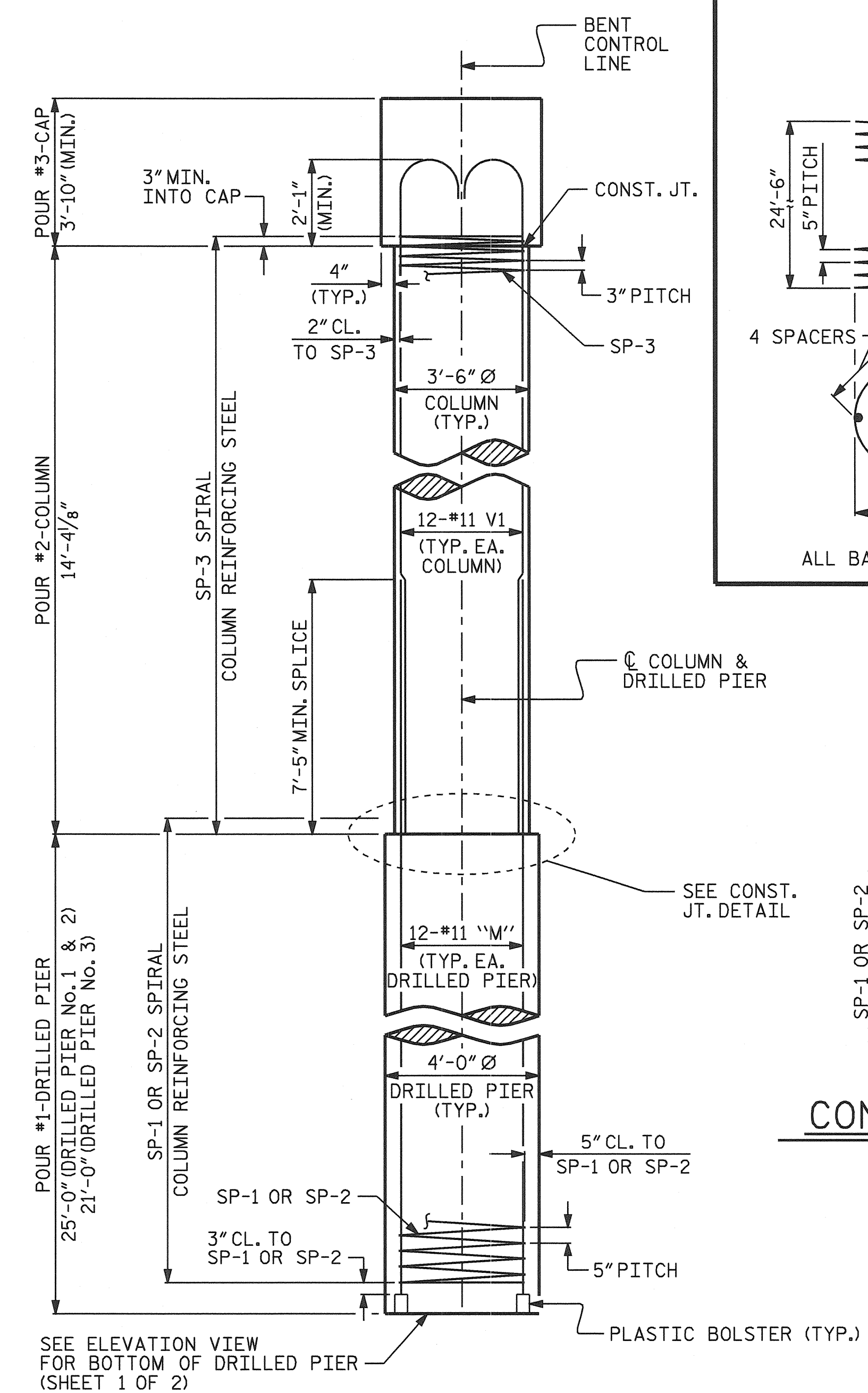
VIEW Y-Y



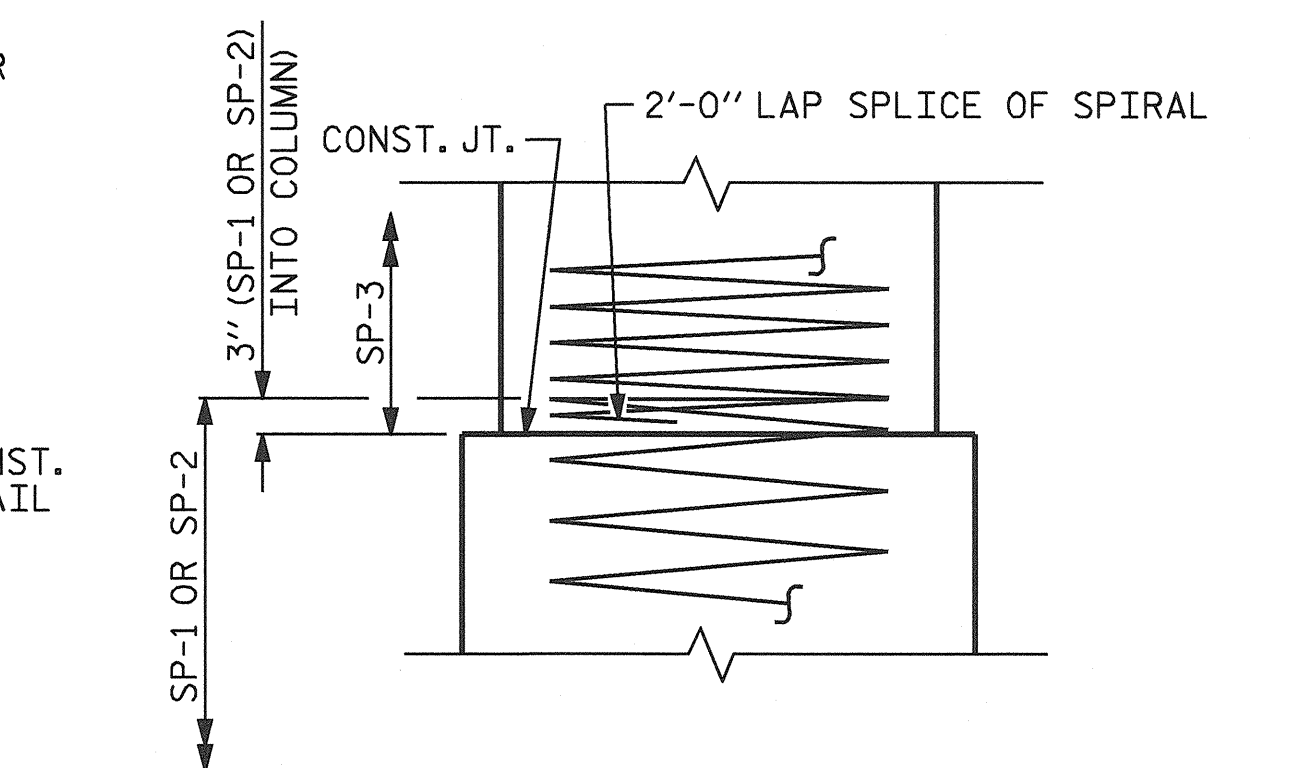
SECTION B-B



SECTION A-A



END ELEVATION



CONSTRUCTION JOINT DETAIL

PROJECT NO. B-3652
GUILFORD COUNTY
 STATION: 21+87.50 -L-

SHEET 2 OF 2

STATE OF NORTH CAROLINA
 DEPARTMENT OF TRANSPORTATION
 RALEIGH

SUBSTRUCTURE
 BENT No. 1

REVISIONS						SHEET NO.
NO.	BY:	DATE:	NO.	BY:	DATE:	S-28
1			3			TOTAL SHEETS
2			4			42

DRAWN BY: P.C. BREWER DATE: 8/18/04
 CHECKED BY: S.B. WILLIAMS DATE: 9/23/04

05-DEC-2005 11:24
 R:\STRUCT\B3652\pbrewer\MICROS\B3652.dgn
 tbeach

