

4" MULTI-CELL COMPONENT DETAILS

NOTES:

THE CONTRACTOR SHALL BE RESPONSIBLE FOR DETERMINING THE TOTAL QUANTITY OF CONDUIT NEEDED TO COMPLETE THE WORK AND THAT THE CONDUIT(S) ARE PLACED AT THE NOTED DIMENSION AND ABOVE THE BOTTOM OF THE GIRDER.

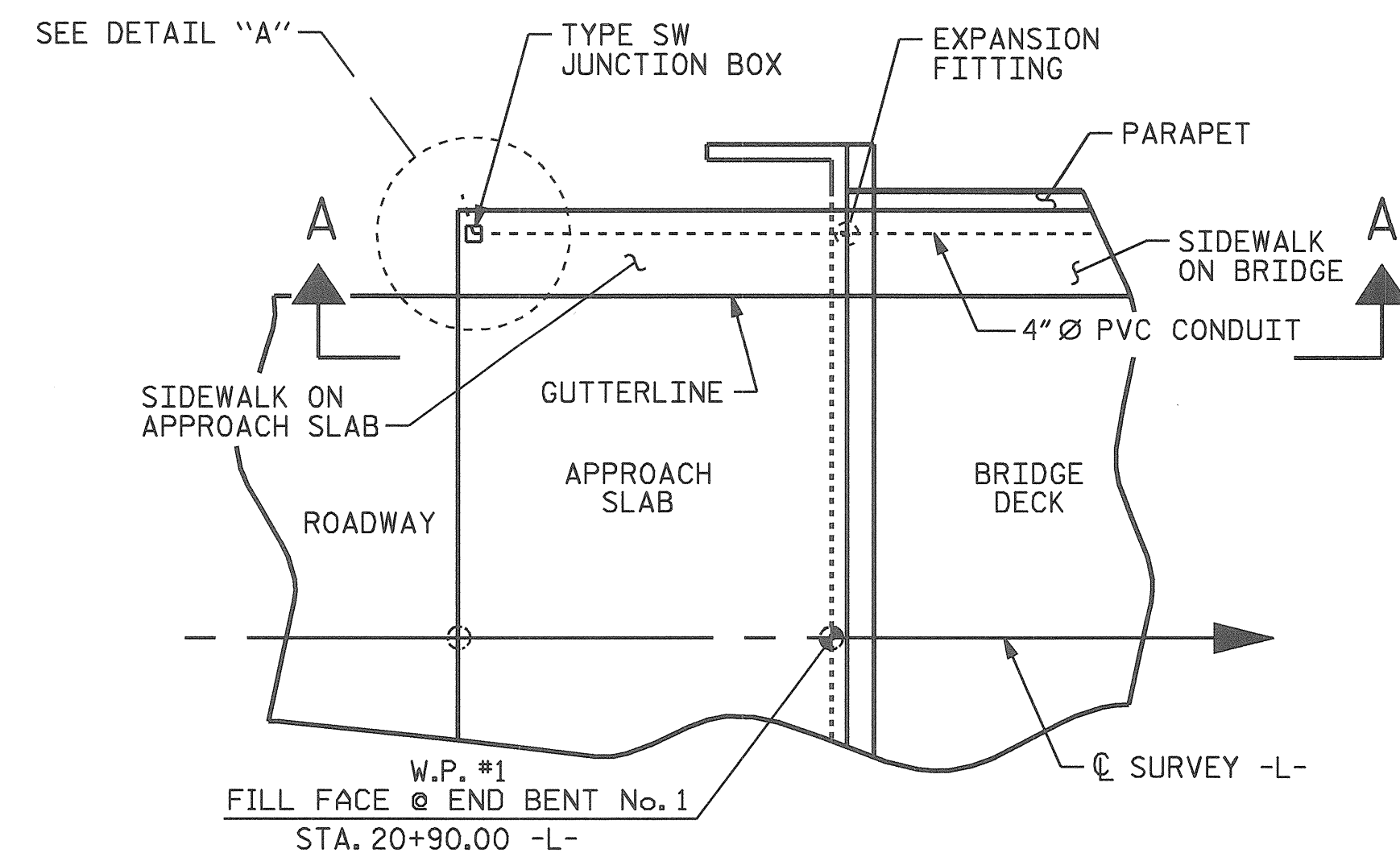
THE INSTALLATION OF THE CONDUIT SYSTEM SHALL BE PAID FOR AS LUMP SUM. THE PRICE SHALL INCLUDE ALL CONDUIT, EXPANSION JOINTS, PVC SLEEVES AND ALL NECESSARY HARDWARE TO COMPLETE THE WORK.

THE CONTRACTOR SHALL FIELD VERIFY THAT THE CONDUIT SYSTEM IS NOT IN CONFLICT WITH THE GUARDRAIL POSTS.

PROVIDE EXPANSION JOINT FOR CONDUIT AT END BENT No. 1 AND END BENT No. 2.

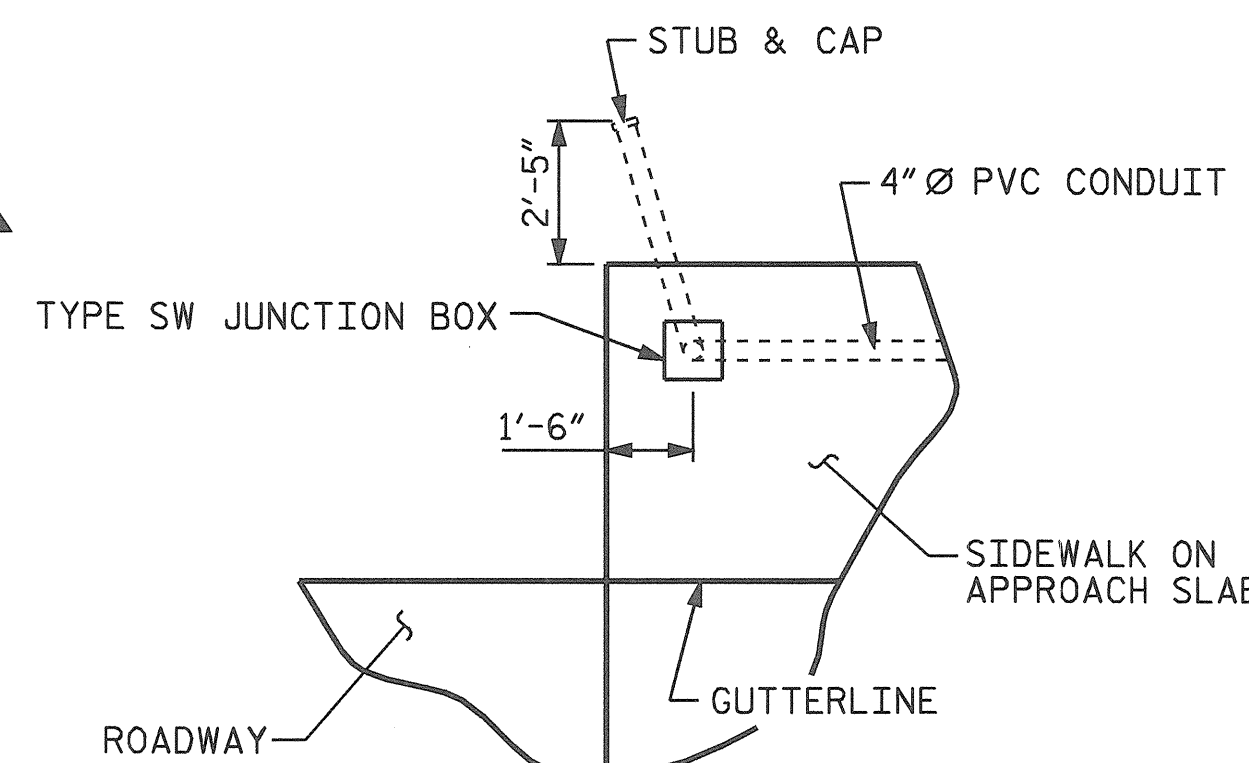
THE CONCRETE SCREW INSERT SHALL HAVE A ROD SIZE OF 5/8" AND A PULL FORCE OF 1260 lbs.

SEE "ELECTRICAL CONDUIT SYSTEM" SPECIAL PROVISION.



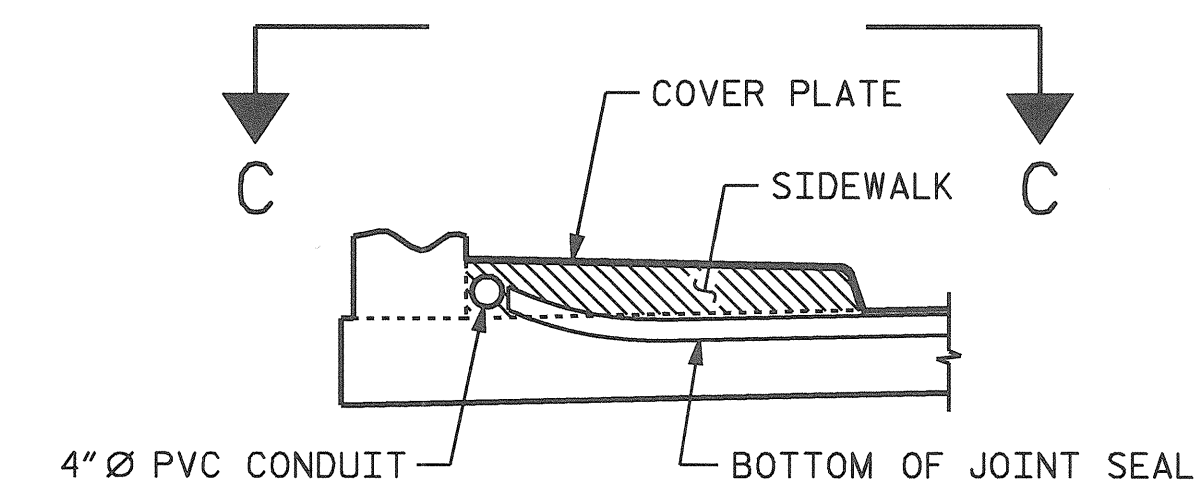
TERMINATION AT END OF APPROACH SLAB

END BENT No. 1 SHOWN, END BENT No. 2 SIMILAR

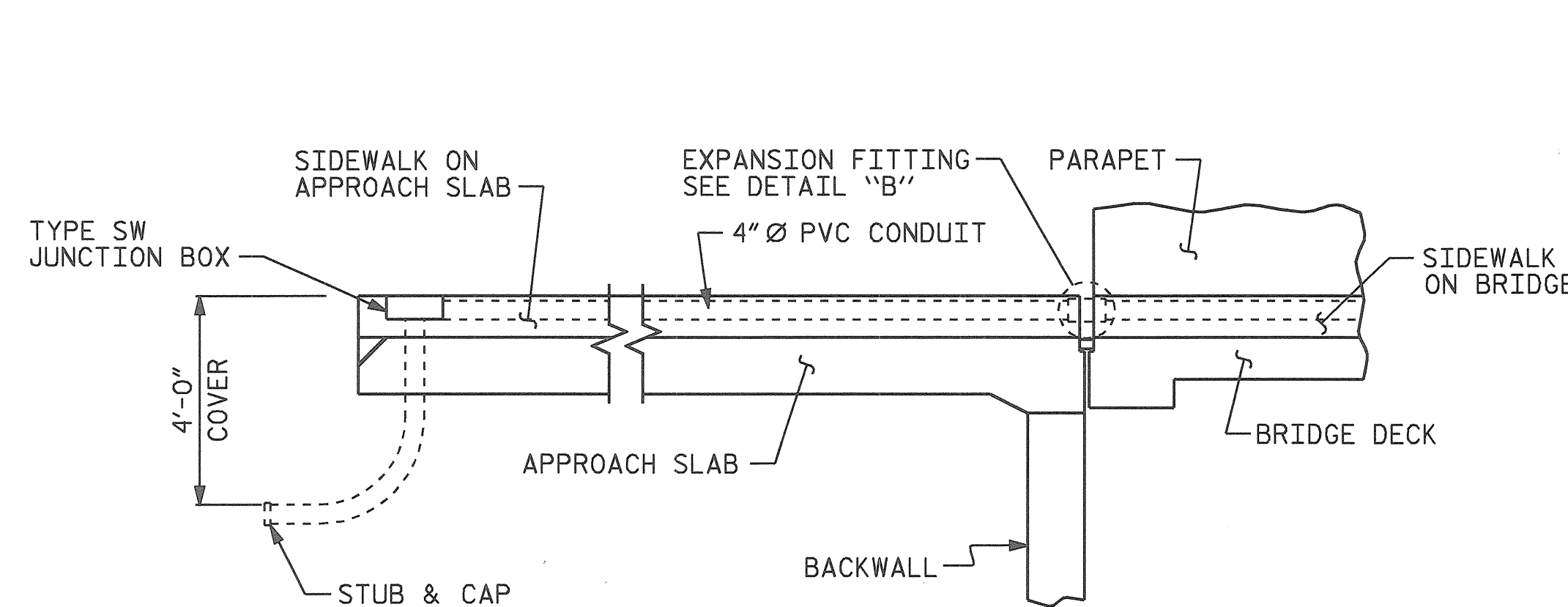


DETAIL "A"

APPROACH SLAB @ END BENT No. 1 SHOWN, APPROACH SLAB @ END BENT No. 2 SIMILAR

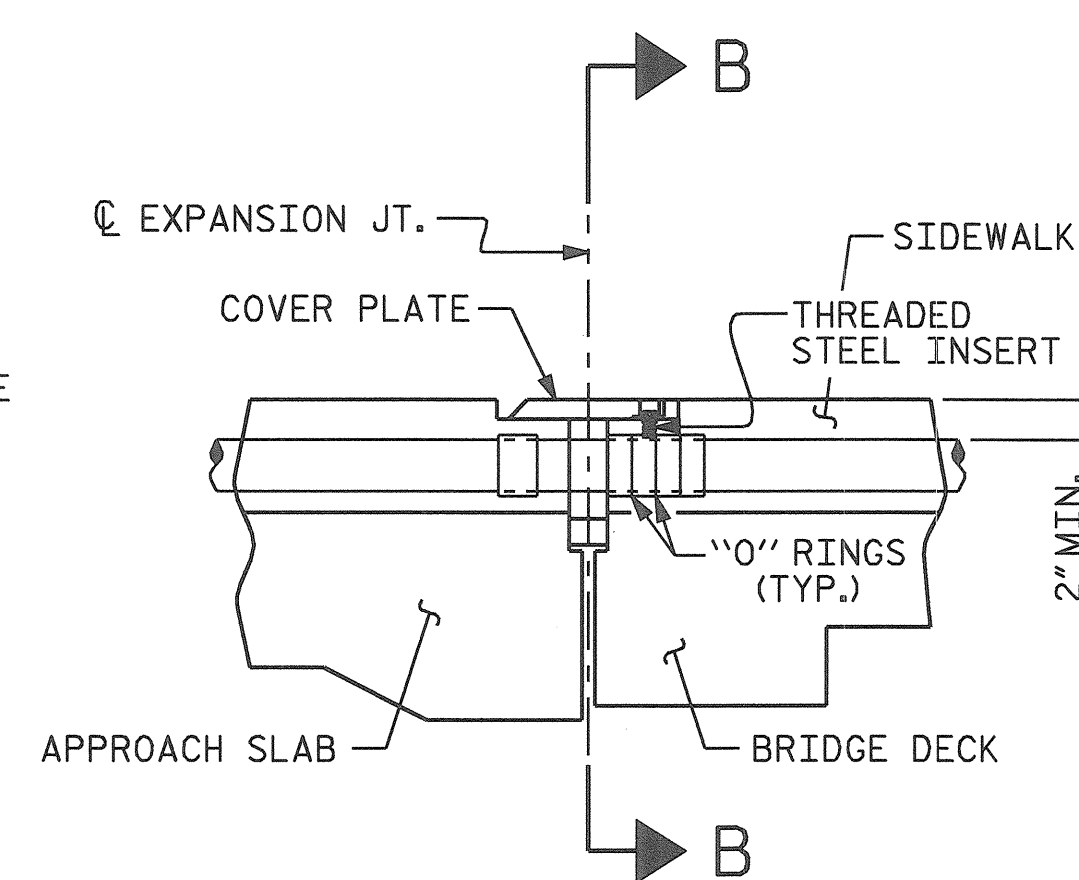


SECTION B-B



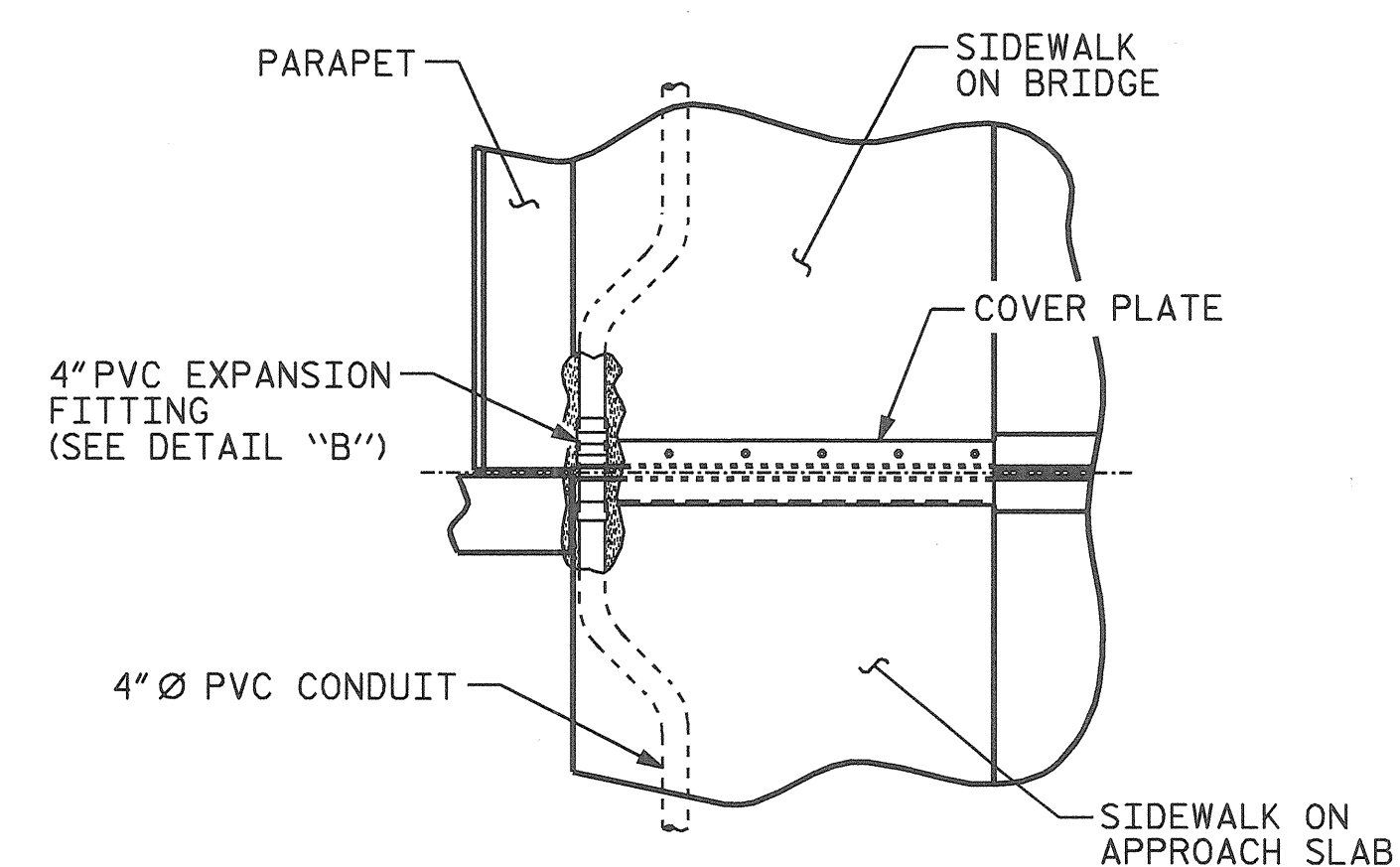
VIEW A-A

APPROACH SLAB @ END BENT No. 1 SHOWN, APPROACH SLAB @ END BENT No. 2 SIMILAR



DETAIL "B"

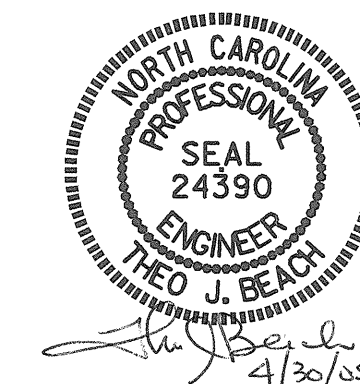
PVC EXPANSION FITTING INSTALLATION



VIEW C-C

PROJECT NO. B-3652
GUILFORD COUNTY
 STATION: 21+87.50 -L-

STATE OF NORTH CAROLINA DEPARTMENT OF TRANSPORTATION RALEIGH						SHEET NO. S-36
STANDARD ELECTRICAL CONDUIT SYSTEM DETAILS						TOTAL SHEETS 42
REVISIONS						
NO.	BY:	DATE:	NO.	BY:	DATE:	
1			3			
2			4			



ASSEMBLED BY : P.C. BREWER	DATE : 1/5/05
CHECKED BY : THEO BEACH	DATE : 1/5/05
DRAWN BY : RWW	2-4-03
CHECKED BY : DBM	2-4-03