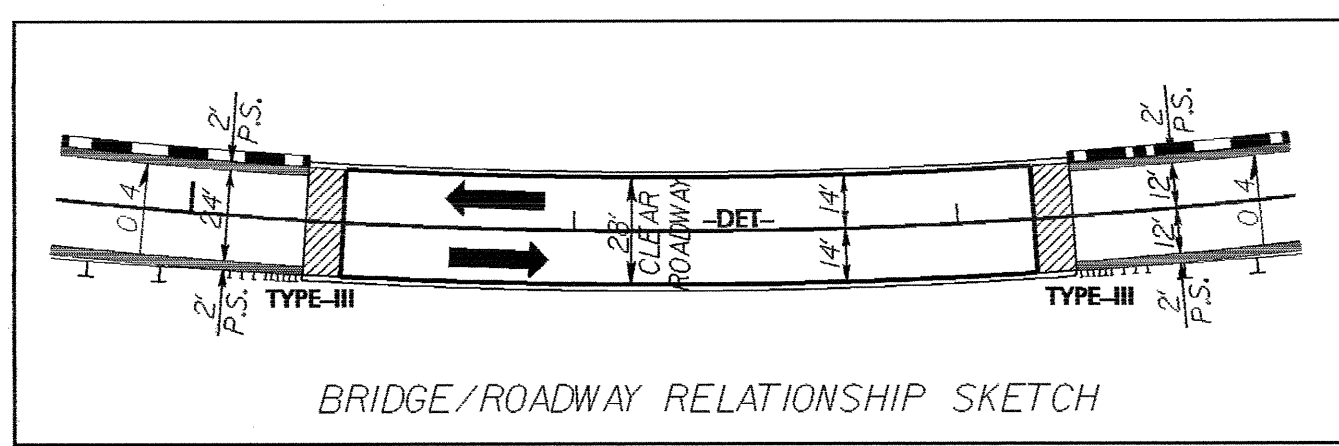
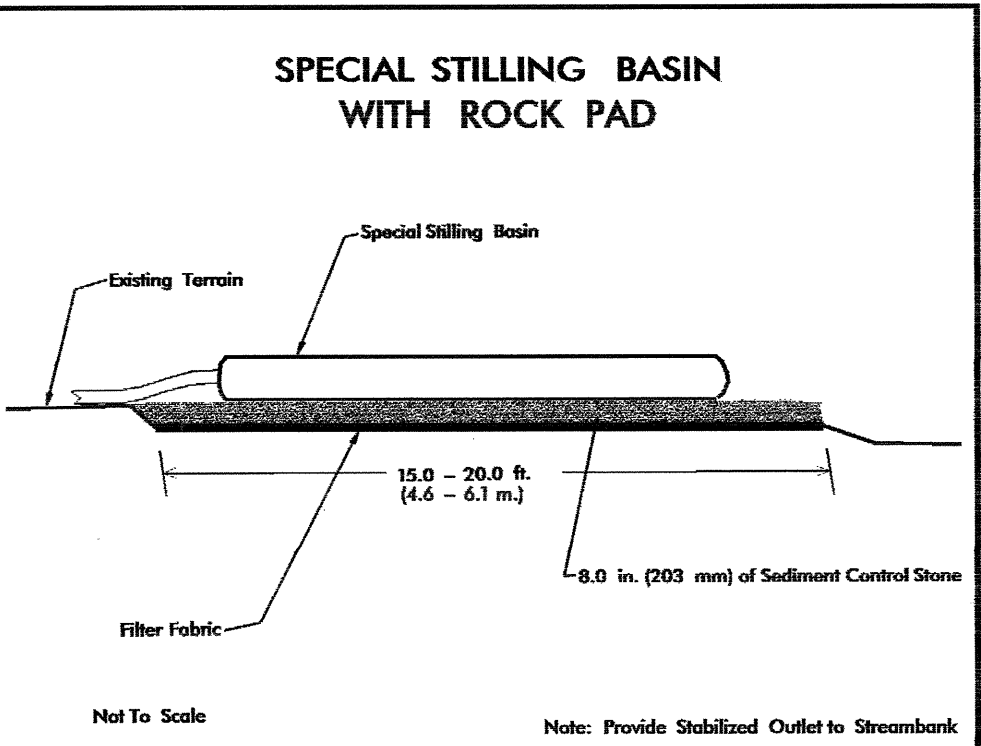
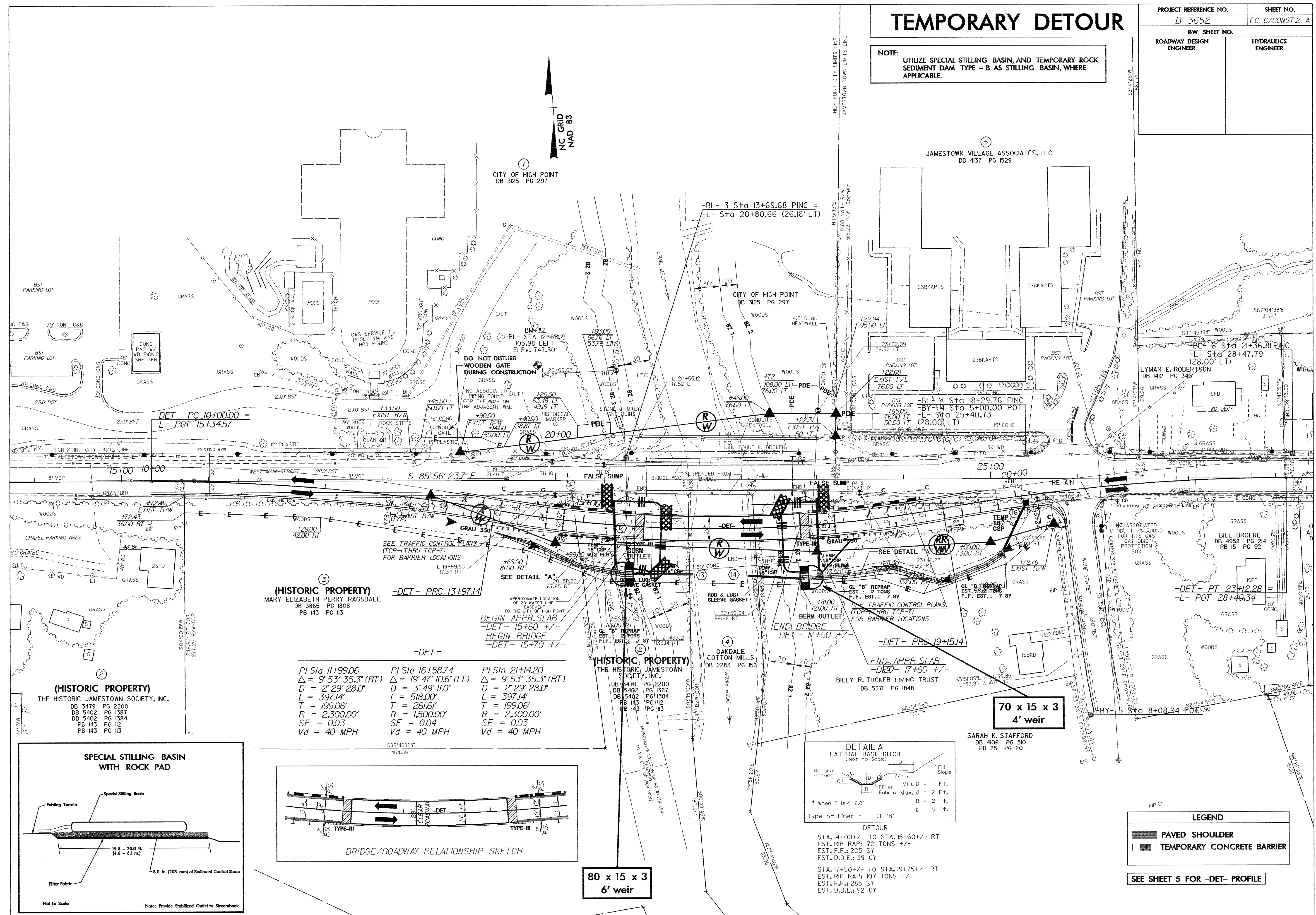


# TEMPORARY DETOUR

PROJECT REFERENCE NO. B-3652	SHEET NO. EC-6/CONST.2-A
RW SHEET NO.	
ROADWAY DESIGN ENGINEER	HYDRAULICS ENGINEER

**NOTE:** UTILIZE SPECIAL STILLING BASIN, AND TEMPORARY ROCK SEDIMENT DAM TYPE - B AS STILLING BASIN, WHERE APPLICABLE.



**(HISTORIC PROPERTY)**  
MARY ELIZABETH PERRY RAGSDALE  
DB 3865 PG 1808  
PB 143 PG 113

**(HISTORIC PROPERTY)**  
THE HISTORIC JAMESTOWN SOCIETY, INC.  
DB 3479 PG 2200  
DB 5402 PG 1387  
DB 5402 PG 1384  
PB 143 PG 112  
PB 143 PG 113

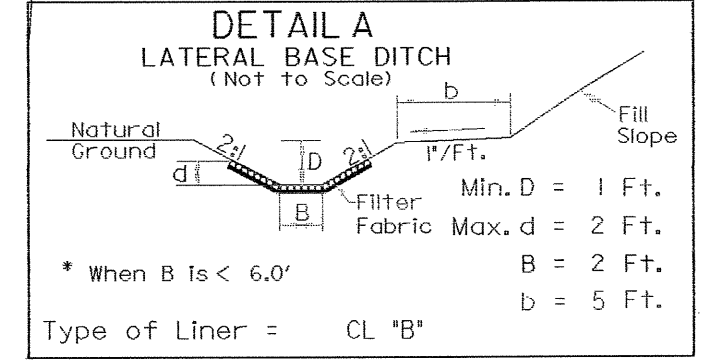
**(HISTORIC PROPERTY)**  
THE HISTORIC JAMESTOWN SOCIETY, INC.  
DB 3479 PG 2200  
DB 5402 PG 1387  
DB 5402 PG 1384  
PB 143 PG 112  
PB 143 PG 113

**(HISTORIC PROPERTY)**  
OAKDALE COTTON MILLS  
DB 2283 PG 152

**(HISTORIC PROPERTY)**  
BILLY R. TUCKER LIVING TRUST  
DB 5371 PG 1848

**(HISTORIC PROPERTY)**  
SARAH K. STAFFORD  
DB 4106 PG 510  
PB 25 PG 20

PI Sta 11+99.06 Δ = 9° 53' 35.3" (RT) D = 2' 29' 28.0" L = 397.14' T = 199.06' R = 2,300.00' SE = 0.03 Vd = 40 MPH	PI Sta 16+58.74 Δ = 19° 47' 10.6" (LT) D = 3' 49' 11.0" L = 518.00' T = 199.06' R = 1,500.00' SE = 0.04 Vd = 40 MPH	PI Sta 21+4.20 Δ = 9° 53' 35.3" (RT) D = 2' 29' 28.0" L = 397.14' T = 199.06' R = 2,300.00' SE = 0.03 Vd = 40 MPH
---	--	--



**DETOUR**

STA. 14+00+/- TO STA. 15+60+/- RT  
EST. RIP RAP: 72 TONS +/-  
EST. F.F.: 205 SY  
EST. D.D.E.: 39 CY

STA. 17+50+/- TO STA. 19+75+/- RT  
EST. RIP RAP: 107 TONS +/-  
EST. F.F.: 285 SY  
EST. D.D.E.: 92 CY

**LEGEND**

	PAVED SHOULDER
	TEMPORARY CONCRETE BARRIER

SEE SHEET 5 FOR -DET- PROFILE