
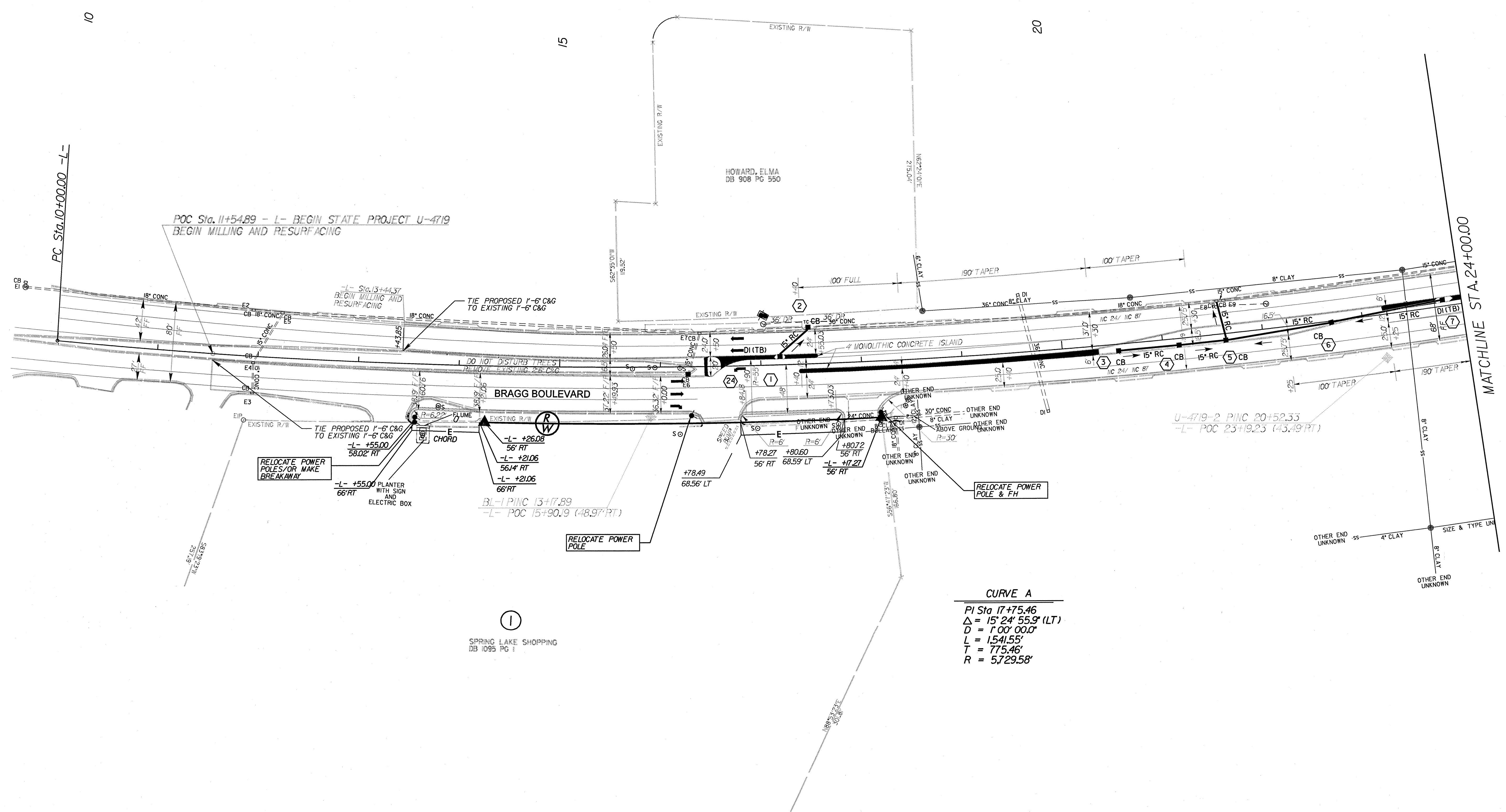
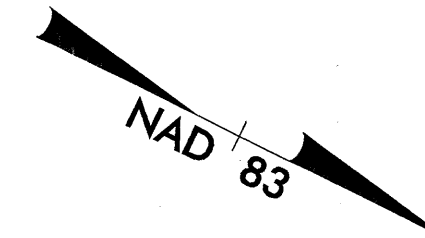


DATUM DESCRIPTION

THE LOCALIZED COORDINATE SYSTEM DEVELOPED FOR THIS PROJECT IS BASED ON THE STATE PLANE COORDINATES ESTABLISHED BY NCSS FOR MONUMENT "U-4719"
 WITH NAD 83 STATE PLANE GRID COORDINATES OF NORTHING: 465066.2792(1) EASTING: 1984258.8792(1)
 THE AVERAGE COMBINED GRID FACTOR USED ON THIS PROJECT (GROUND TO GRID) IS: 999874730
 THE N.C. LAMBERT GRID BEARING AND LOCALIZED HORIZONTAL GROUND DISTANCE FROM "U-4719" TO -L- 10+00.00 IS 55,580.5083 N 25 15 57.41 E
 ALL LINEAR DIMENSIONS ARE LOCALIZED HORIZONTAL DISTANCES VERTICAL DATUM USED IS NGVD 29

ALL PROPOSED UTILITY WORK SHOWN WILL BE DONE BY OTHERS.

PROJECT REFERENCE NO. U-4719	SHEET NO. UO-2
RW SHEET NO.	
 PARSONS BRINCKERHOFF 909 AVIATION PARKWAY SUITE 1500 MORRISVILLE, NC 27560	
UTILITIES BY OTHERS	



CURVE A
 PI Sta 17+75.46
 $\Delta = 15^\circ 24' 55.9''$ (LT)
 $D = 100' 00.0''$
 $L = 154.55'$
 $T = 775.46'$
 $R = 5,729.58'$

G:\PROJECTS\20344\Bragg Blvd\U4719\res\U4719_PB_LUC_04.dgn
 C:\NC\FLOTT\XEROX\825\X34\U4719_PB_LUC_04.dpf
 11/7/2005