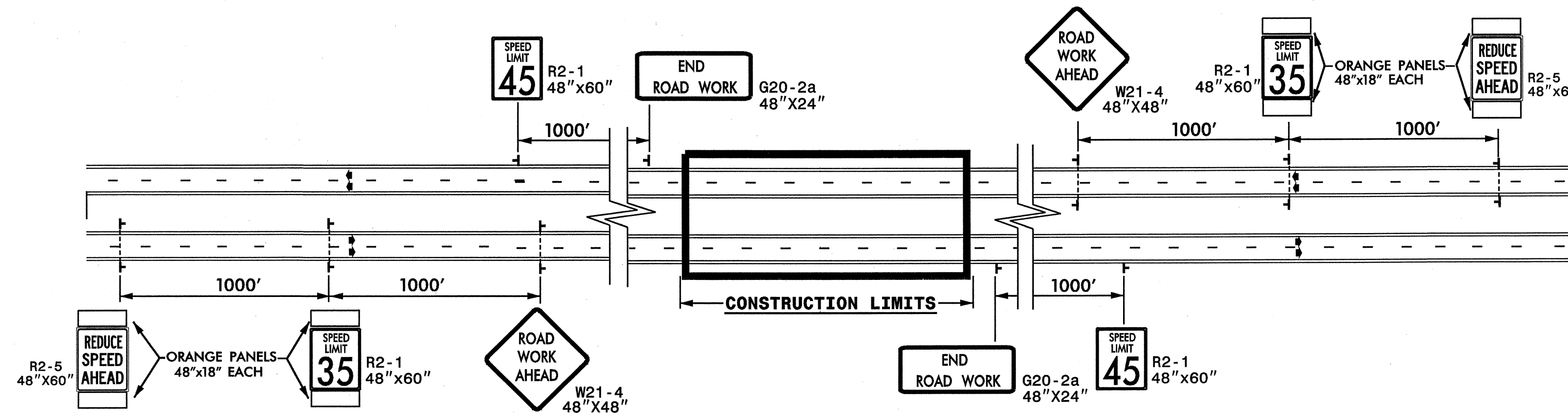


DETAIL A

| | |
|---------------------|-----------|
| PROJ. REFERENCE NO. | SHEET NO. |
| U-4719 | TCP-38 |



STATE OF NORTH CAROLINA
 DEPT. OF TRANSPORTATION
 DIVISION OF HIGHWAYS
 RALEIGH, N.C.

DETAIL DRAWING FOR
 WORK ZONE SIGNS
 "REDUCE SPEED AHEAD SIGN"

GENERAL NOTES

- FOR UNDIVIDED AND TWO LANE-TWO WAY ROADWAYS, SIGNS ARE REQUIRED ONLY ON THE RIGHT SIDE OF THE ROADWAY.
- USE MULTIPLE "REDUCE SPEED AHEAD" SIGNS ON ROADWAYS WHEN REDUCING THE SPEED LIMIT MORE THAN 10 MPH. EXAMPLE: WHEN REDUCING THE SPEED LIMIT FROM 70 MPH TO 50 MPH THE FIRST SIGN A DRIVER SEES IS "REDUCE SPEED AHEAD" FOLLOWED BY "SPEED LIMIT 60 MPH" FOLLOWED BY "REDUCE SPEED AHEAD" FOLLOWED BY "SPEED LIMIT 50MPH". (SEE DETAIL B FOR SIGN SPACING)
- SEE SHEET TCP-? AND TCP-? FOR ALL OTHER WORK ZONE SIGNS SIZE AND SPACING OTHER THAN THE "REDUCE SPEED AHEAD" SIGN.

SHEET 1 OF 1

11/3/2005
 G:\PROJECTS\20344\Braga_Blv\Design\Reduce_Speed Ahead_Sign.dgn
 \$\$\$USER\$NAME\$\$\$

| | | | |
|-----------------------------------|---------------|---|------|
| APPROVED: <i>Gregory C. Heint</i> | DATE: 11-2-05 | <p align="center">DETAIL DRAWING FOR WORK ZONE SIGNS</p> | |
| | | | |
| SCALE: NONE | | <p align="center">REVISIONS</p> | |
| DATE: | | 7-98 | 100 |
| DWG. BY: | | 10-98 | 500 |
| DESIGN BY: | | 12-99 | 0304 |
| REVIEWED BY: | | | |