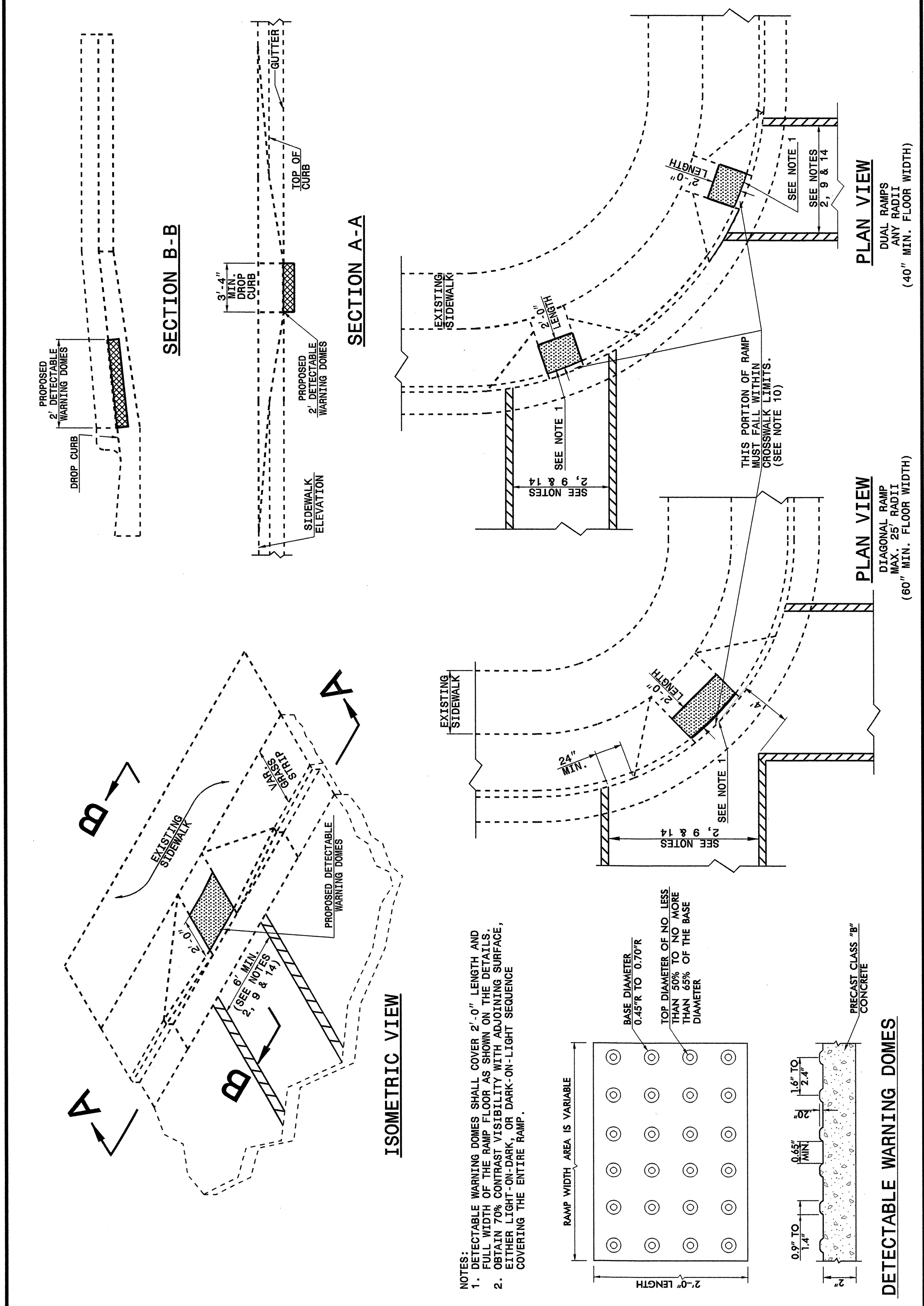


STATE OF NORTH CAROLINA  
DEPT. OF TRANSPORTATION  
DIVISION OF HIGHWAYS  
RALEIGH, N.C.

ENGLISH DETAIL DRAWING FOR  
**RETROFITTING DETECTABLE WARNING DOMES  
ONTO EXISTING WHEELCHAIR RAMP**  
CURB CUT

SHEET 3 OF 5  
**848D06**



STATE OF NORTH CAROLINA  
DEPT. OF TRANSPORTATION  
DIVISION OF HIGHWAYS  
RALEIGH, N.C.

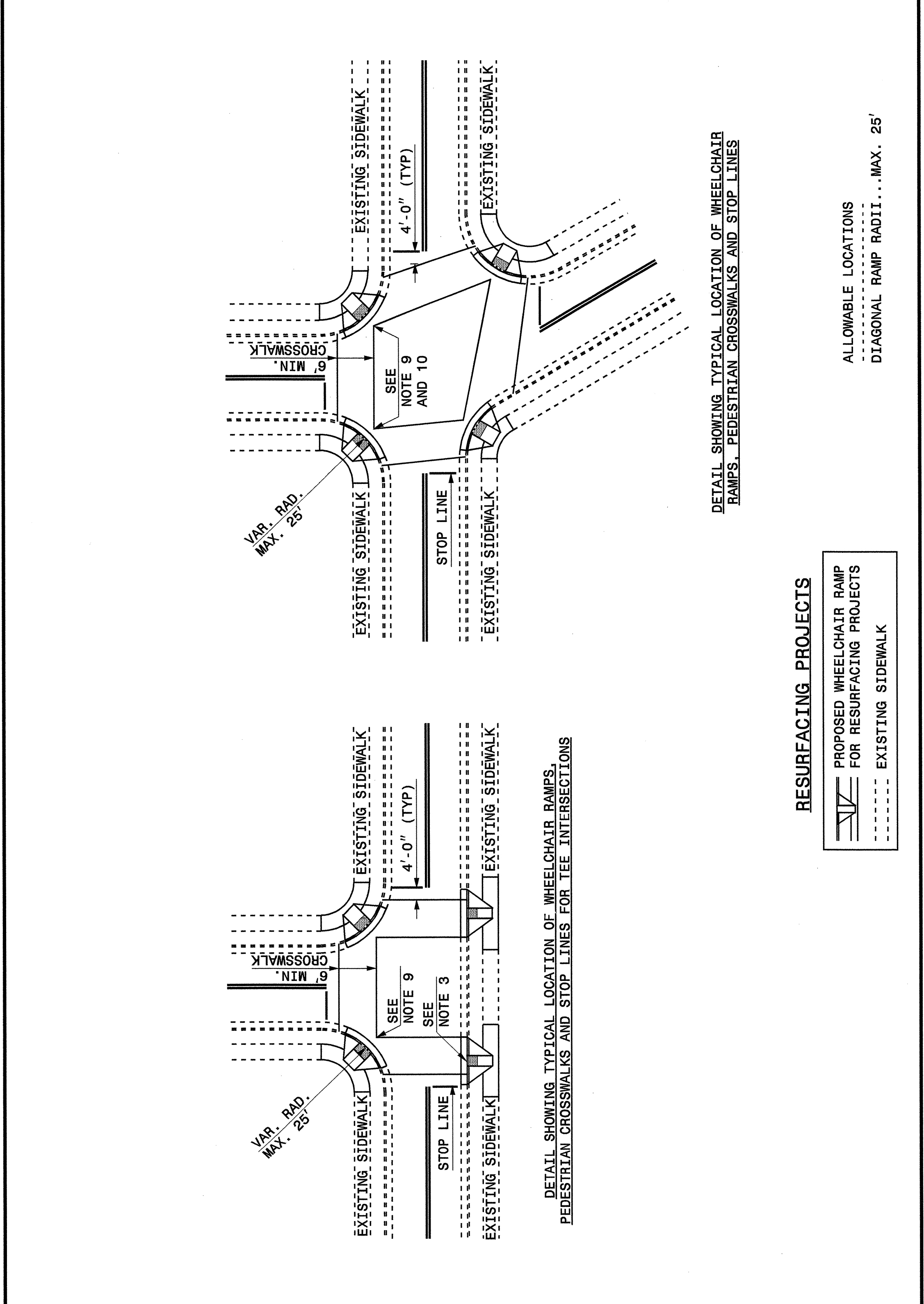
ENGLISH DETAIL DRAWING FOR  
**RETROFITTING DETECTABLE WARNING DOMES  
ONTO EXISTING WHEELCHAIR RAMP**  
CURB CUT

SHEET 3 OF 5  
**848D06**

STATE OF NORTH CAROLINA  
DEPT. OF TRANSPORTATION  
DIVISION OF HIGHWAYS  
RALEIGH, N.C.

ENGLISH DETAIL DRAWING FOR  
**WHEELCHAIR RAMP**  
CURB CUT

SHEET 4 OF 5  
**848D06**



STATE OF NORTH CAROLINA  
DEPT. OF TRANSPORTATION  
DIVISION OF HIGHWAYS  
RALEIGH, N.C.

ENGLISH DETAIL DRAWING FOR  
**WHEELCHAIR RAMP**  
CURB CUT

SHEET 4 OF 5  
**848D06**

**PROJECT SERVICES UNIT  
STANDARDS AND SPECIAL DESIGN**  
Office 919-250-4128 FAX 919-250-4119

**SEE PLATE FOR TITLE**

ORIGINAL BY: DETAIL 848D05 DATE: 09-06-05  
 MODIFIED BY: E.E. WARD DATE: 09-06-05  
 CHECKED BY: *Paul Burt* DATE: 11/9/05  
 FILE SPEC.: *usr/stds/02tdetail/english/84806/848d06.dgn*



09-SEP-2005 15:59 C:\projects\Special Details\viewer\stds\02\stds to Special Details/english\84806\0848d06.dgn