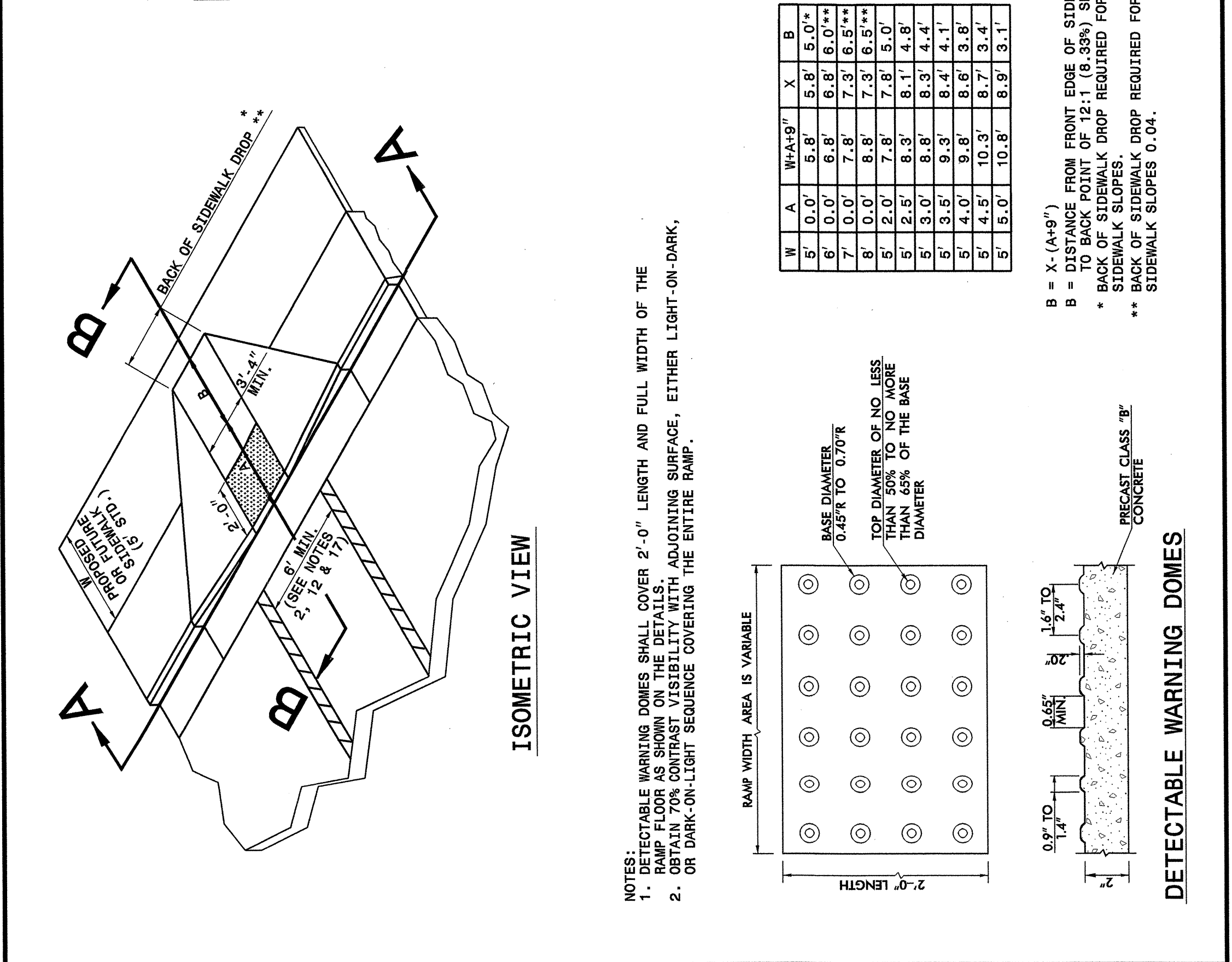
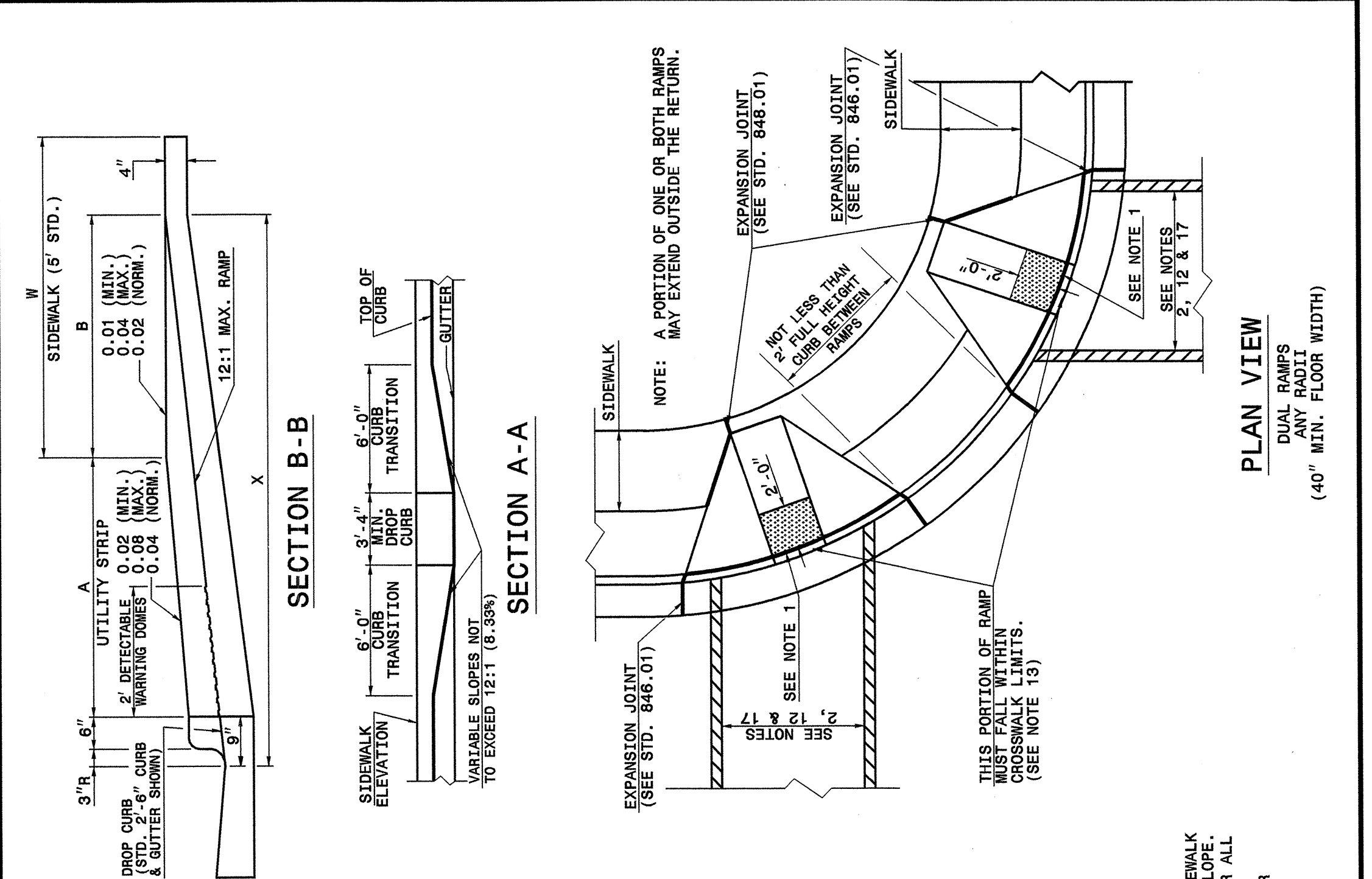


STATE OF NORTH CAROLINA DEPT. OF TRANSPORTATION DIVISION OF HIGHWAYS RALEIGH, N.C.

ENGLISH DETAIL DRAWING FOR WHEELCHAIR RAMP CURB CUT

SHEET 1 OF 4 848D05



W	A	W+A+9"	X	B
5'	0'0"	5'-8"	5'-8"	5'-0"
6'	0'0"	6'-8"	6'-8"	6'-0"
7'	0'0"	7'-8"	7'-3"	6'-5"
8'	0'0"	8'-8"	7'-3"	6'-5"
5'	2'-0"	7'-8"	7'-8"	5'-0"
5'	2'-5"	8'-3"	8'-1"	4'-8"
5'	3'-0"	8'-8"	8'-3"	4'-4"
5'	3'-5"	9'-3"	8'-4"	4'-1"
5'	4'-0"	9'-8"	8'-6"	3'-8"
5'	4'-5"	10'-3"	8'-7"	3'-4"
5'	5'-0"	10'-8"	8'-9"	3'-1"

B = X - (A+9")
 B = DISTANCE FROM FRONT EDGE OF SIDEWALK TO BACK POINT OF 12:1 (8.33%) SLOPE.
 * SIDEWALK SLOPES REQUIRED FOR ALL SIDEWALK SLOPES 0.04.
 ** BACK OF SIDEWALK DROP REQUIRED FOR SIDEWALK SLOPES 0.04.

STATE OF NORTH CAROLINA DEPT. OF TRANSPORTATION DIVISION OF HIGHWAYS RALEIGH, N.C.

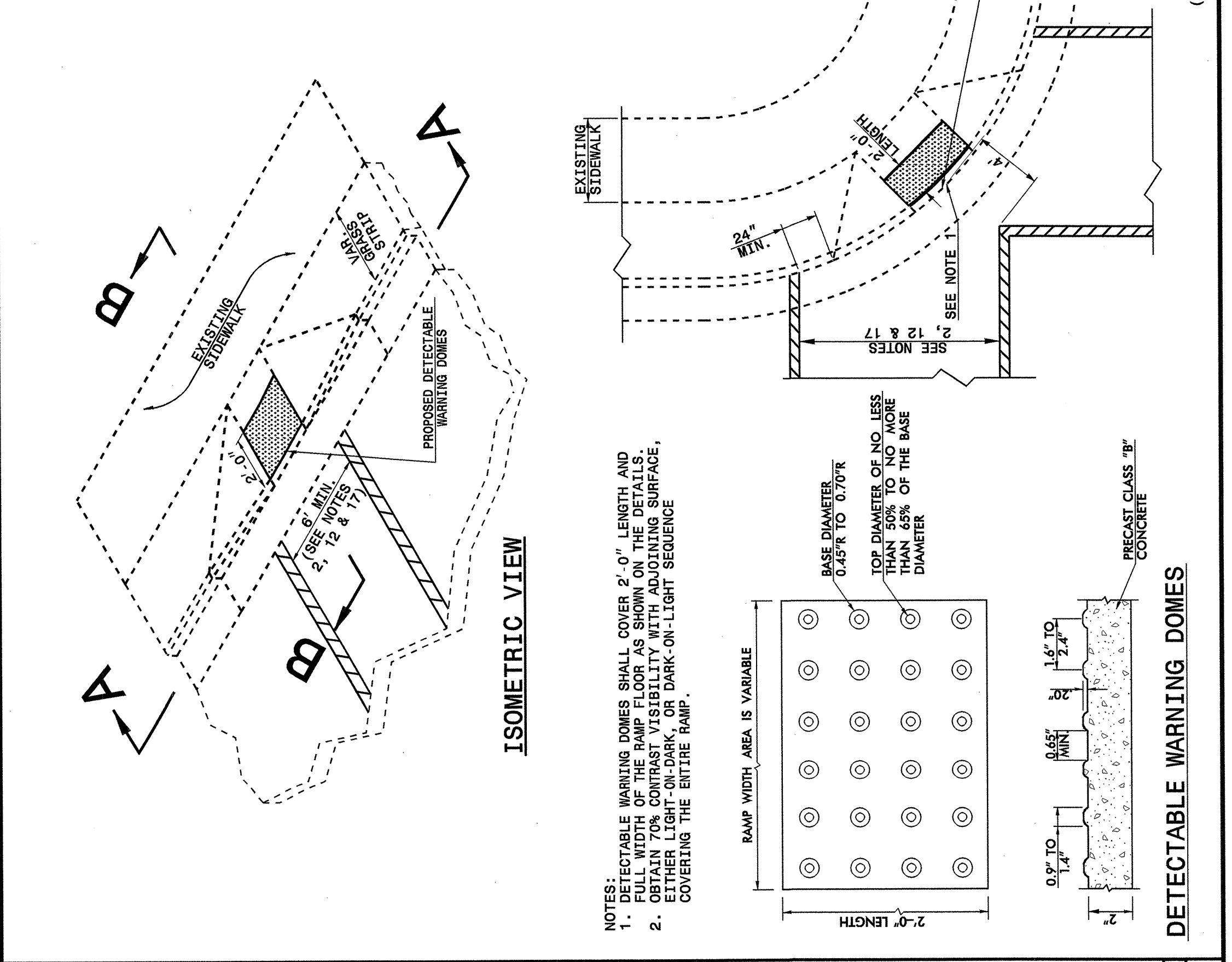
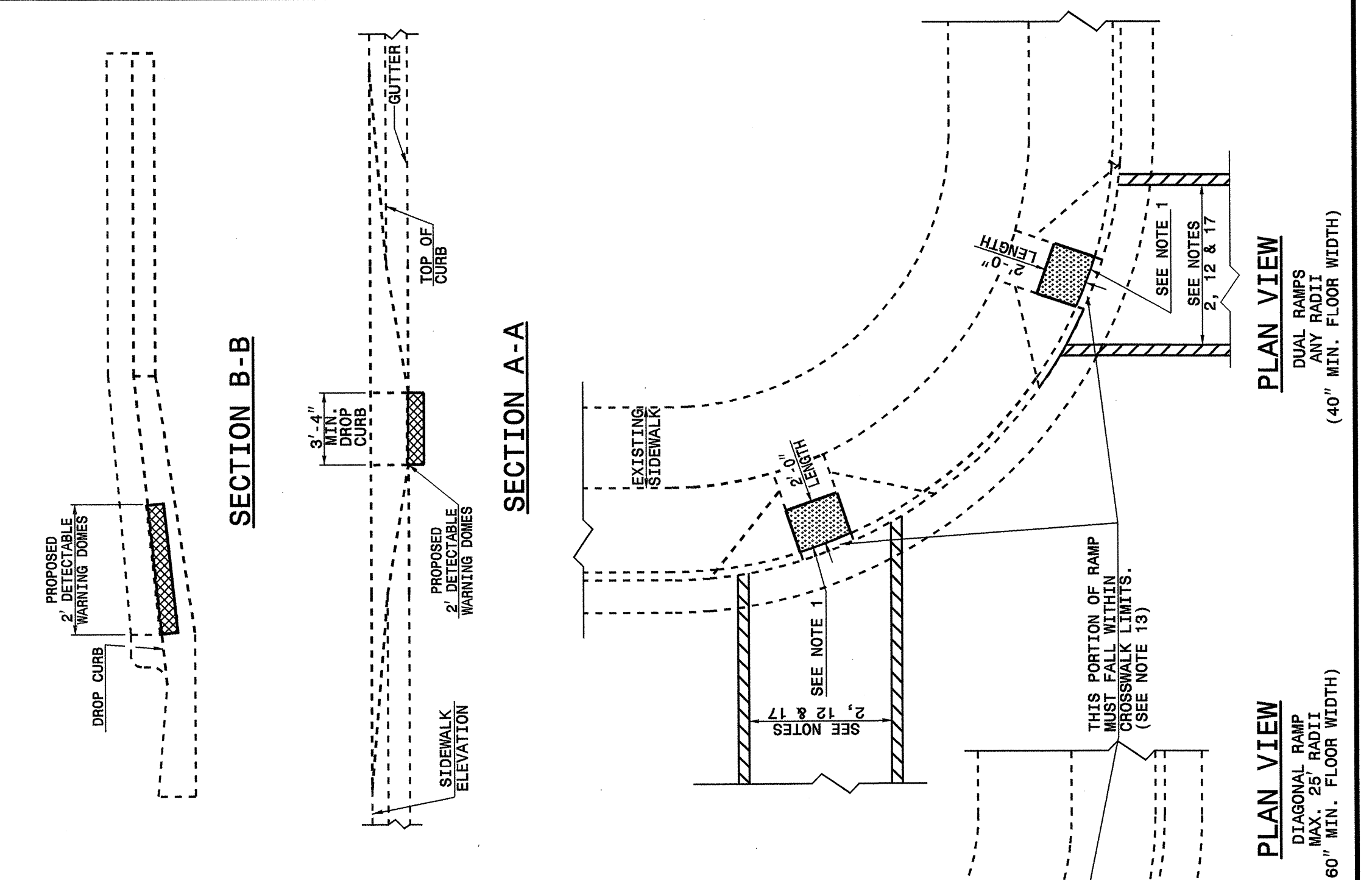
ENGLISH DETAIL DRAWING FOR WHEELCHAIR RAMP CURB CUT

SHEET 1 OF 4 848D05

STATE OF NORTH CAROLINA DEPT. OF TRANSPORTATION DIVISION OF HIGHWAYS RALEIGH, N.C.

ENGLISH DETAIL DRAWING FOR RETROFITTING DETECTABLE WARNING DOMES ONTO EXISTING WHEELCHAIR RAMP CURB CUT

SHEET 2 OF 4 848D05



NOTES:
 1. DETECTABLE WARNING DOMES SHALL COVER 2'-0" LENGTH AND FULL WIDTH OF THE RAMP FLOOR AS SHOWN ON THE DETAILS.
 2. OBTAIN 70% CONTRAST VISIBILITY WITH ADJOINING SURFACE, EITHER LIGHT-ON-DARK, OR DARK-ON-LIGHT SEQUENCE COVERING THE ENTIRE RAMP.

PROJECT SERVICES UNIT STANDARDS AND SPECIAL DESIGN Office 919-250-4128 FAX 919-250-4119

SEE PLATE FOR TITLE

ORIGINAL BY: 2002 STD. 848.05 DATE: E.E. WARD DATE: 09-06-05
 CHECKED BY: J. S. HOFFER DATE: 7/9/05
 FILE SPEC.: \\gs\stds\02todetail\english\84805\848d05.dgn



06-SEP-2005 15:55 S:\Contractors\Yong\84805\Special Details\english\84805\0848d05.dgn