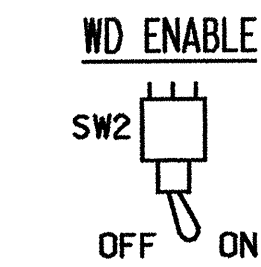
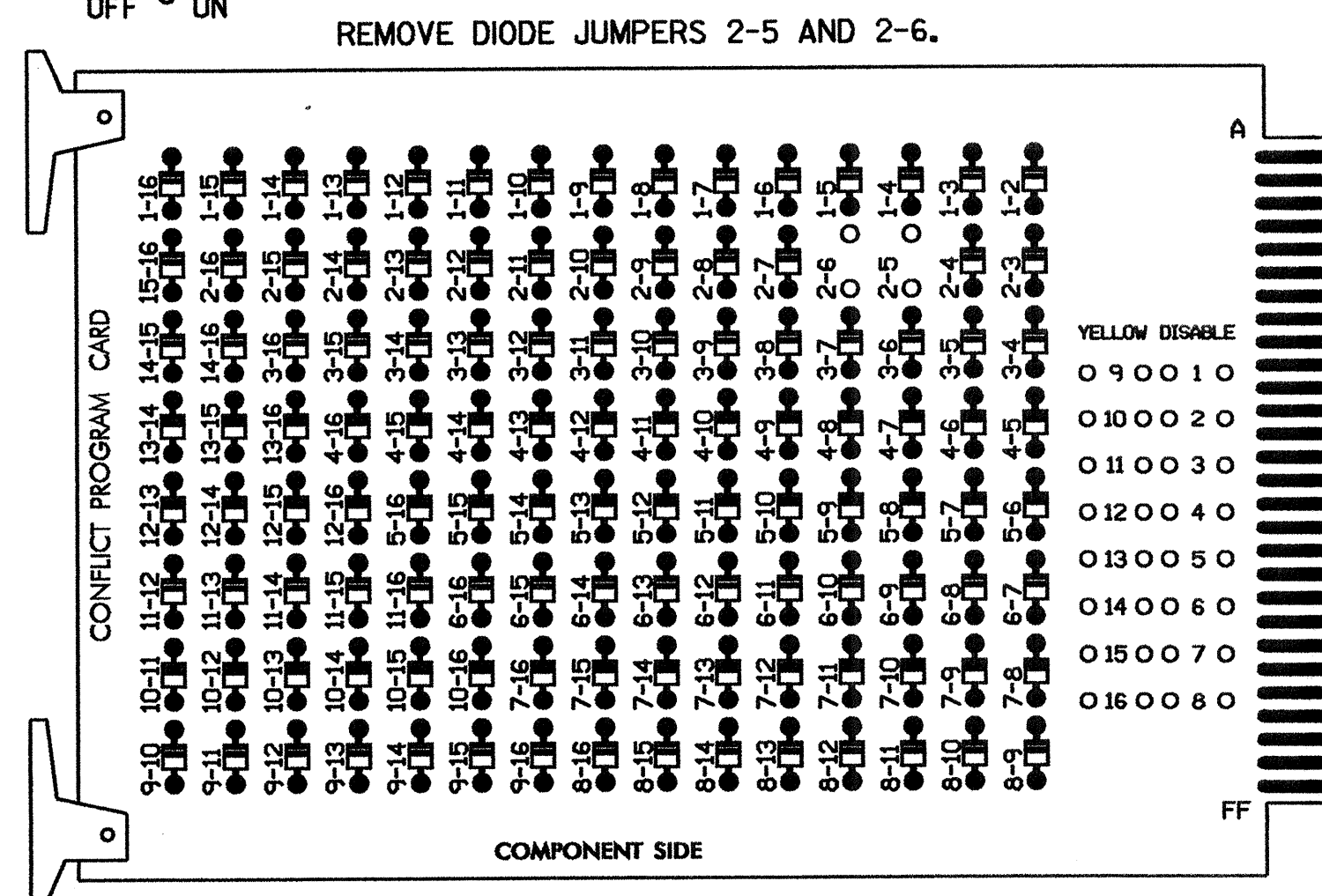


EDI MODEL 2010ECL CONFLICT MONITOR

PROGRAMMING DETAIL



(remove jumpers and set switches as shown)

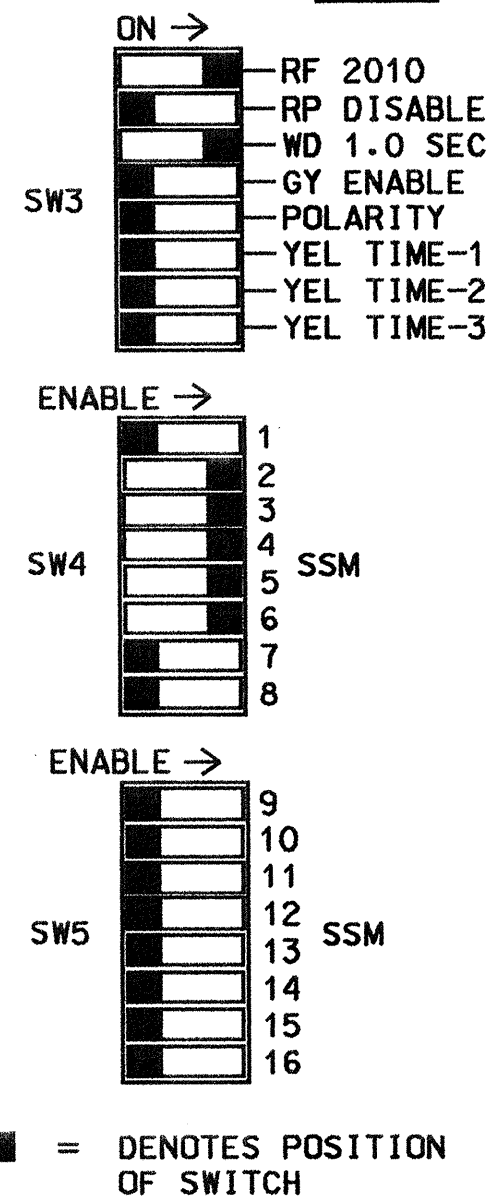


REMOVE JUMPERS AS SHOWN

NOTES:

- CARD IS PROVIDED WITH ALL DIODE JUMPERS IN PLACE. REMOVAL OF ANY JUMPER ALLOWS ITS CHANNELS TO RUN CONCURRENTLY.
- MAKE SURE JUMPERS SEL1-SEL5 ARE PRESENT ON THE MONITOR BOARD.

OPTIONS



NOTES

- TO PREVENT "FLASH-CONFLICT" PROBLEMS, INSERT RED FLASH PROGRAM BLOCKS FOR ALL UNUSED VEHICLE LOAD SWITCHES IN THE OUTPUT FILE. THE INSTALLER SHALL VERIFY THAT SIGNAL HEADS FLASH IN ACCORDANCE WITH THE SIGNAL PLANS.
- ENSURE THAT RED ENABLE IS ACTIVE AT ALL TIMES DURING NORMAL OPERATION. TO PREVENT RED FAILURES ON UNUSED MONITOR CHANNELS, TIE UNUSED RED MONITOR INPUTS 1,7,8, 9,10,11,12,13,14,15 & 16 TO LOAD SWITCH AC+ PER THE CABINET MANUFACTURER'S INSTRUCTIONS.
- PROGRAM CONTROLLER TO START UP IN PHASES 2 AND 6 GREEN.
- ENABLE SIMULTANEOUS GAP-OUT FEATURE, ON CONTROLLER UNIT, FOR ALL PHASES.
- PROGRAM PHASES 2 AND 6, ON CONTROLLER UNIT, FOR VARIABLE INITIAL AND GAP REDUCTION.
- THE CABINET AND CONTROLLER ARE PART OF THE FAYETTEVILLE SIGNAL SYSTEM.

EQUIPMENT INFORMATION

CONTROLLER.....CONTRACTOR SUPPLIED 2070L
 CABINETCONTRACTOR SUPPLIED 332
 SOFTWAREECONOLITE OASIS
 CABINET MOUNT.....BASE
 OUTPUT FILE POSITIONS...12
 LOAD SWITCHES USED.....S2,S3,S4,S5,S6
 PHASES USED.....2,3,4,5,6
 OVERLAPS.....NONE

FIELD CONNECTION HOOK-UP CHART

LOAD SWITCH NO.	S1	S2	S2P	S3	S4	S4P	S5	S6	S6P	S7	S8	S8P
PHASE	1	2	2 PED	3	4	4 PED	5	6	6 PED	7	8	8 PED
SIGNAL HEAD NO.	NU	21, 22,23	NU	31, 32,33, 63	41, 42	NU	21	61, 62,63	NU	NU	NU	NU
GREEN		130		118, 118	103, 103			136				
YELLOW		129		117, 117	102, 102			135				
RED		128		116, 116	101, 101		*	134				
RED ARROW												
YELLOW ARROW					117			132				
GREEN ARROW				118	118, 103			133				

NU = NOT USED

* DENOTES INSTALL LOAD RESISTOR. SEE LOAD RESISTOR INSTALLATION DETAIL THIS PAGE.

BACK-UP PROTECTION PROGRAMMING DETAIL

(program controller as shown below)

- FROM MAIN MENU PRESS '2' (PHASE CONTROL), THEN '1' (PHASE CONTROL FUNCTIONS). SCROLL TO THE BOTTOM OF THE MENU AND ENABLE DYNAMIC/BACKUP CONTROL FUNCTION 1.
- FROM PHASE CONTROL FUNCTIONS MENU PRESS '2' (DYNAMIC/BACKUP CONTROL FUNCTIONS).

DYNAMIC/BACKUP CONTROL FUNCTION #01
 OVERLAPS: ABCDEFGHIJKLMNPO
 IF OVERLAPS ARE ACTIVE !
 OR PHASES: 12345678910111213141516
 IF PHASES ARE ON: X
 OMIT PHASES : X
 CALL PHASES : X

BACKUP PROTECTION PROGRAMMING COMPLETE

INPUT FILE POSITION LAYOUT

(front view)

	1	2	3	4	5	6	7	8	9	10	11	12	13	14
FILE "I"	U S 2A	L S 2B	U S 6A	L S 6B	U S 6C	L S NOT USED	U S 3A	L S 4A	U S 3B	L S NOT USED	U S NOT USED	L S NOT USED	U S NOT USED	L S NOT USED
FILE "J"	U S 5A	L S 5B	U S 6A	L S 6B	U S 6C	L S NOT USED	U S 3A	L S 4A	U S 3B	L S NOT USED	U S NOT USED	L S NOT USED	U S NOT USED	L S NOT USED

EX. : 1A, 2A, ETC. = LOOP NO.'S

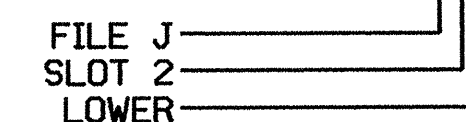
FS = FLASH SENSE
 ST = STOP TIME

INPUT FILE CONNECTION & PROGRAMMING CHART

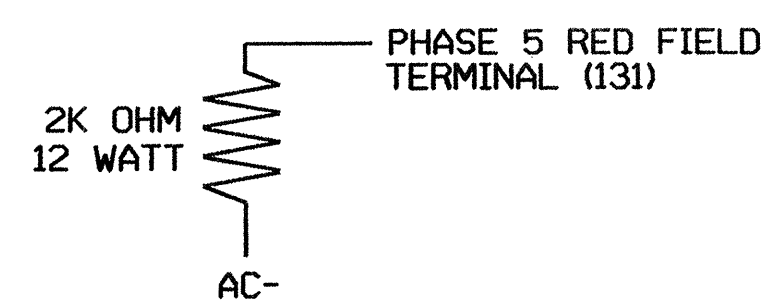
LOOP NO.	LOOP TERMINAL	INPUT FILE POS.	PIN NO.	INPUT ASSIGNMENT NO.	DETECTOR NO.	NEMA PHASE	CALL	EXTEND	FULL TIME DELAY	STRETCH TIME	DELAY TIME
2A	TB2-5,6	I2U	39	1	2	2	Y	Y			
2B	TB2-7,8	I2L	43	5	12	2	Y	Y			
3A	TB4-9,10	I6U	41	3	4	3	Y	Y			
3B	TB4-11,12	I6L	45	7	14	3	Y	Y			10
4A	TB6-1,2	I7U	65	27	34	4	Y	Y			10
5A ¹	TB3-5,6	J2U	40	2	6	2	Y	Y	Y		3
	TB3-7,8	J2L	44	6	16	5	Y	Y			15
6A	TB3-9,10	J3U	64	26	36	6	Y	Y			
6B	TB3-11,12	J3L	77	39	46	6	Y	Y			
6C	TB5-1,2	J4U	48	10	26	6	Y	Y	Y		3

¹ADD JUMPERS FROM TB3-5 TO TB3-7, AND FROM TB3-6 TO TB3-8.

INPUT FILE POSITION LEGEND: J2L



LOAD RESISTOR INSTALLATION DETAIL



NOTE: THE PURPOSE OF THIS RESISTOR IS TO LOAD THE CHANNEL RED MONITOR INPUT IN ORDER FOR THE SIGNAL SEQUENCE MONITOR TO USE THE FULL SIGNAL SEQUENCE MONITORING CAPABILITY ON CHANNELS THAT DO NOT USE THE RED DISPLAY IN THE FIELD.

NEW INSTALLATION

ELECTRICAL AND PROGRAMMING DETAILS FOR: **NC 24-87 (BRAGG BOULEVARD) AT NORTH MAIN STREET/SHOPPING CENTER DRIVEWAY**

Division 6 CUMBERLAND COUNTY SPRING LAKE

Prepared in the Office of: **WILLIAM HAIRSTON** REVIEWED BY: *[Signature]*

PLAN DATE: **OCTOBER 2004** ENGINEER: **GEORGE C. BRUNN**

REVISIONS: _____ INIT. _____ DATE _____

Signature: *[Signature]* DATE: _____

SEAL: NORTH CAROLINA PROFESSIONAL ENGINEER SEAL 022013

22 N. McDowell St., Raleigh, NC 27603

SIG. TWENTY NO. 06-0379