

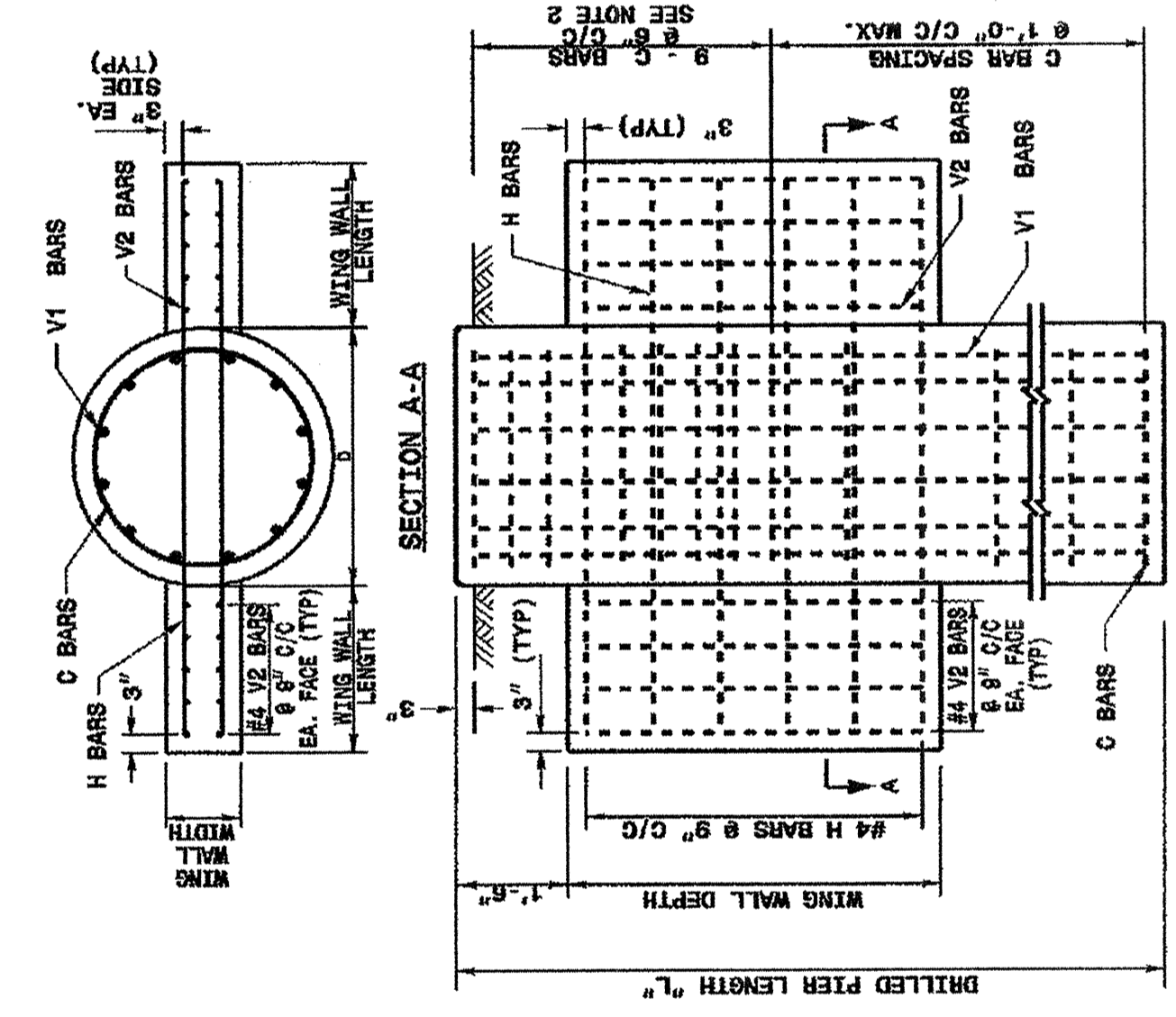
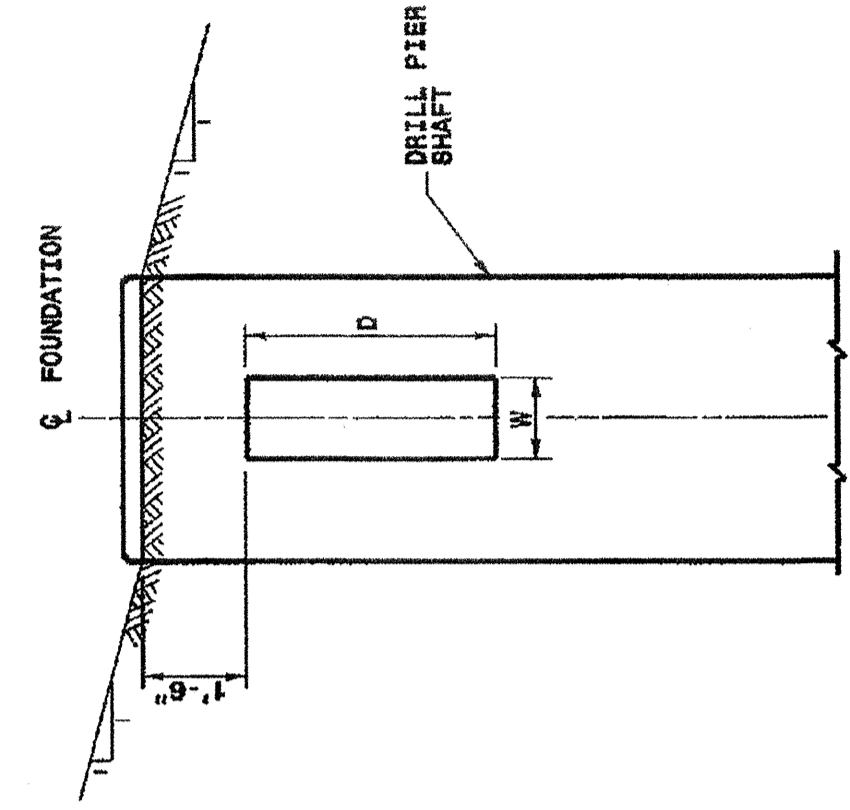
STATE OF NORTH CAROLINA
DEPT. OF TRANSPORTATION
DIVISION OF HIGHWAYS
RALEIGH, N.C.

ENGLISH STANDARD DRAWING FOR
METAL POLE FOUNDATIONS
REINFORCING CAGE DETAILS

SHEET 1 OF 2
1742.01

NOTES

1. THE NUMBER OF C-BARS IS BASED ON FOUNDATION DEPTH. SEE FOUNDATION SELECTION TABLES.
2. CIRCULAR TIE REINFORCING RINGS MAY BE VERTICALLY ADJUSTED BY +/- 3" AT A DEPTH BETWEEN 2'-0" AND 3'-0" TO FACILITATE THE INSTALLATION OF ELECTRICAL CONDUIT ENTERING IN THE CAGE.
3. THE LENGTH OF V1-BARS IS BASED ON FOUNDATION DEPTH. SEE FOUNDATION SELECTION TABLES.
4. THE QUANTITIES FOR STEEL AND CONCRETE SHOWN IN THE WING WALL DETAILS CHART REFLECT THE AMOUNT OF MATERIAL FOR 1 PAIR OF WING WALLS (2 WING WALLS PER DRILL PIER SHAFT.).
5. CONCRETE DRILL PIER SHAFT VOLUME (CU. YDS.):
FOR 42" DIA. = .896XL
FOR 48" DIA. = .465XL
6. DEFORM REINFORCING STEEL TO CONFORM TO ASTM A615 GRADE 60. TIES MAY BE DEFORMED OR PLAIN.
7. CAST CONCRETE AGAINST UNDISTURBED SOIL.
8. DO NOT ERECT TRAFFIC SIGNAL STRUCTURES BEFORE THE CONCRETE IN THE FOUNDATION HAS ATTAINED A MINIMUM COMPRESSIVE STRENGTH OF 3000 PSI.
9. MAKE PROVISIONS FOR DRAINAGE OF WATER FROM INSIDE OF THE METAL SUPPORT.
10. FOR OTHER DETAILS REGARDING CONSTRUCTION OF CONCRETE FOUNDATION SEE PROJECT SPECIAL PROVISIONS.
11. IN CASE OF ANY CROSS SLOPES, GRADE AROUND THE FOUNDATION AS FOLLOWS:

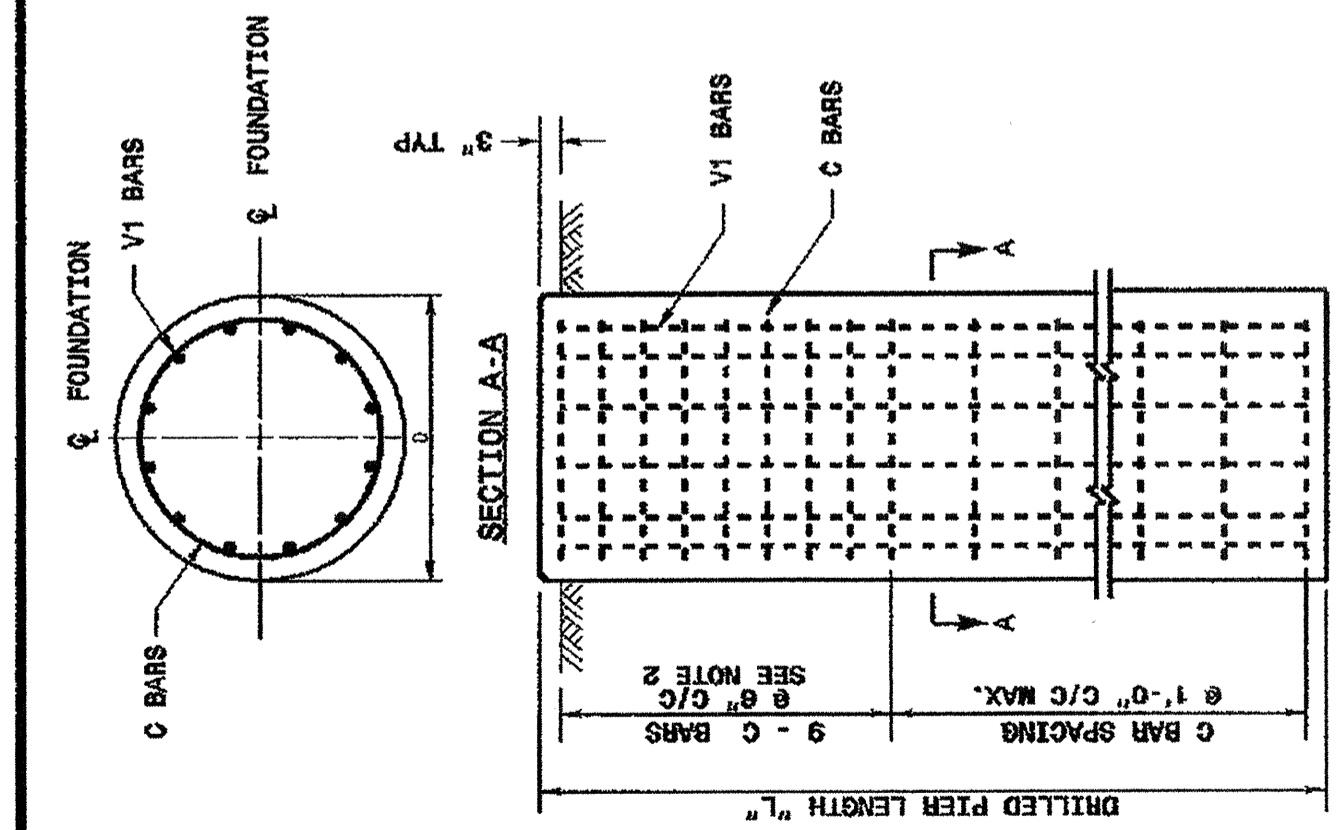


REINFORCING STEEL TABLE FOR STANDARD 42" and 48" DRILL PIER SHAFT WITH TYPE 1 AND TYPE 2 WING WALLS

Wing Wall Type	Bar No.	Bar Size	Type	Length
TYPE 1	1	48"	#4	STR. 3'-6"
	2	48"	#4	STR. 10'-0"
	3	48"	#4	STR. 10'-0"
	4	48"	#4	STR. 10'-0"
TYPE 2	1	48"	#4	STR. 3'-6"
	2	48"	#4	STR. 10'-0"
	3	48"	#4	STR. 10'-0"
	4	48"	#4	STR. 10'-0"

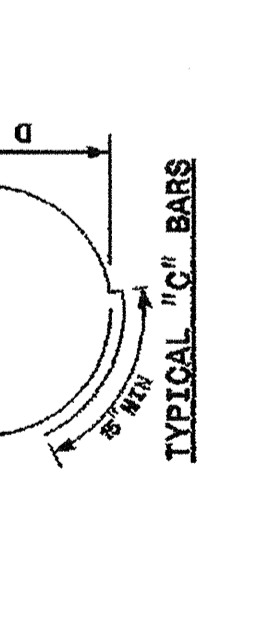
WING WALL DETAILS

Wing Wall Type	Wing Wall Length (ft.)	Wing Wall Width (ft.)	Concrete Volume (Cu. Yds.)
TYPE 1	1'-0"	1'-0"	.4
TYPE 2	3'-0"	1'-0"	1.2



REINFORCING STEEL TABLE FOR STANDARD DRILL PIER SHAFT (42" & 48" DIAMETER)

Bar No.	Bar Size	Type	Length
1	48"	#4	STR. 3'-6"
2	48"	#4	STR. 10'-0"
3	48"	#4	STR. 10'-0"
4	48"	#4	STR. 10'-0"



STATE OF NORTH CAROLINA
DEPT. OF TRANSPORTATION
DIVISION OF HIGHWAYS
RALEIGH, N.C.

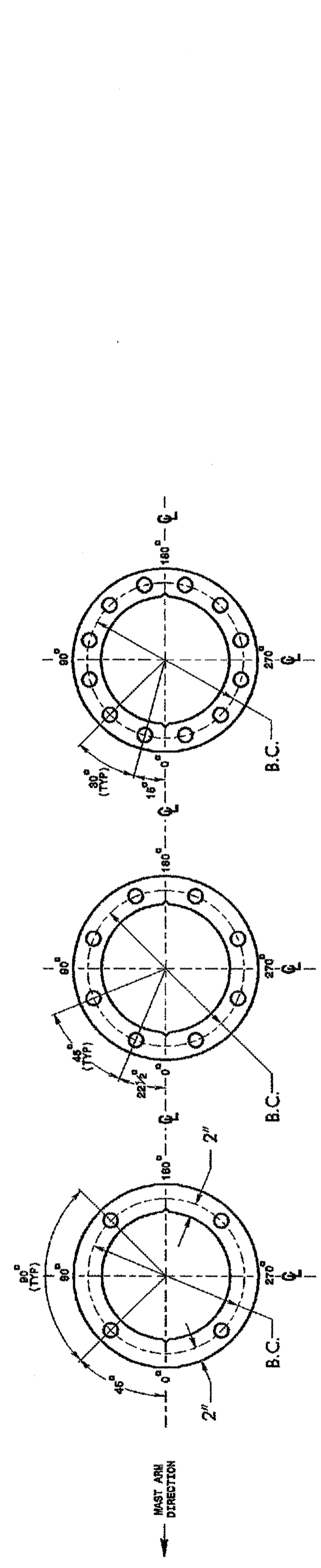
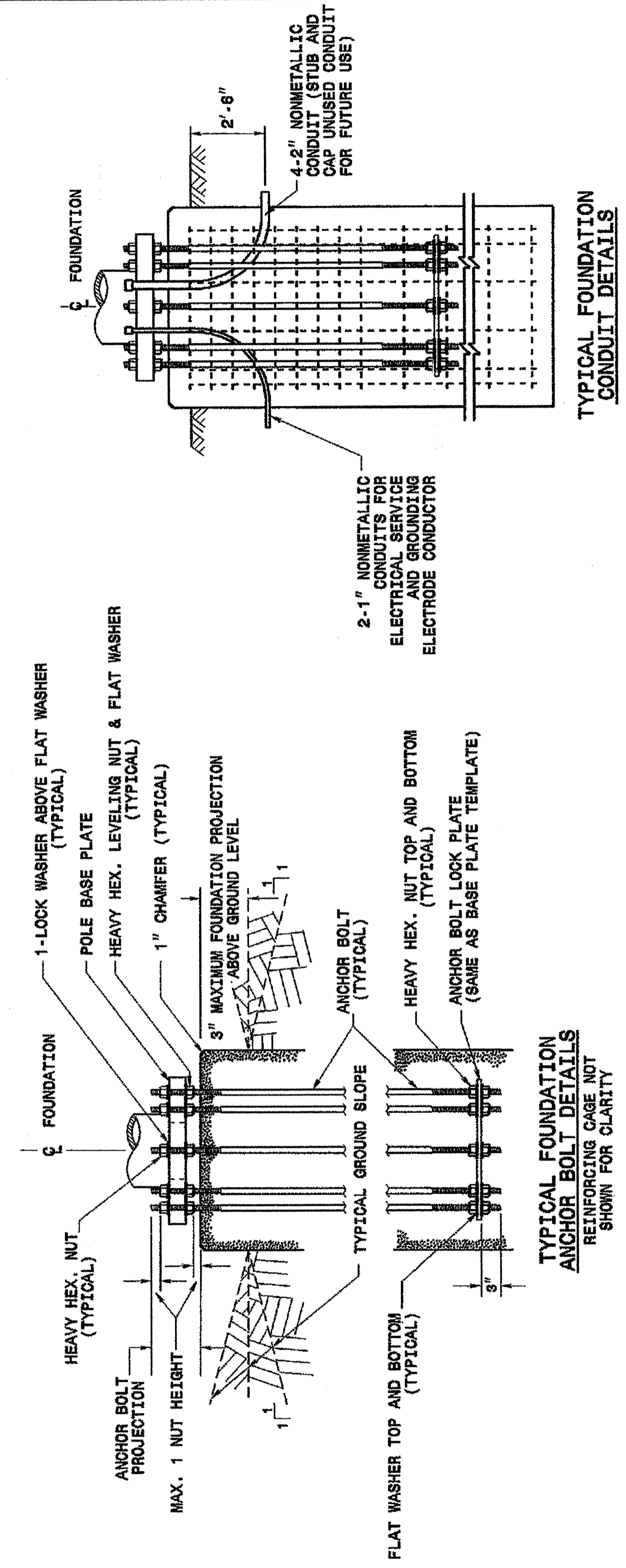
ENGLISH STANDARD DRAWING FOR
METAL POLE FOUNDATIONS
REINFORCING CAGE DETAILS

SHEET 1 OF 2
1742.01

STATE OF NORTH CAROLINA
DEPT. OF TRANSPORTATION
DIVISION OF HIGHWAYS
RALEIGH, N.C.

ENGLISH STANDARD DRAWING FOR
METAL POLE FOUNDATIONS
INSTALLATION DETAILS

SHEET 2 OF 2
1742.01



STATE OF NORTH CAROLINA
DEPT. OF TRANSPORTATION
DIVISION OF HIGHWAYS
RALEIGH, N.C.

ENGLISH STANDARD DRAWING FOR
METAL POLE FOUNDATIONS
INSTALLATION DETAILS

SHEET 2 OF 2
1742.01

<p>Structural Engineer</p> <p>Gregory A. Fuller 8/20/04</p>	<p>Electrical Engineer</p> <p>Gregory A. Fuller 8/20/04</p>
<p>Standard Drawings Traffic Management and Signal Systems Unit 122 N. McDowell St., Raleigh, NC 27603</p>	
<p>See Plate for Title</p>	
<p>Original: 2002 Standards</p>	

20-aug-2004 12:08 \\n1\mrc\p\c\cupse\2003\METAL_POLE_STANDARD\sp\01\01\174201.pln sheet-dgn