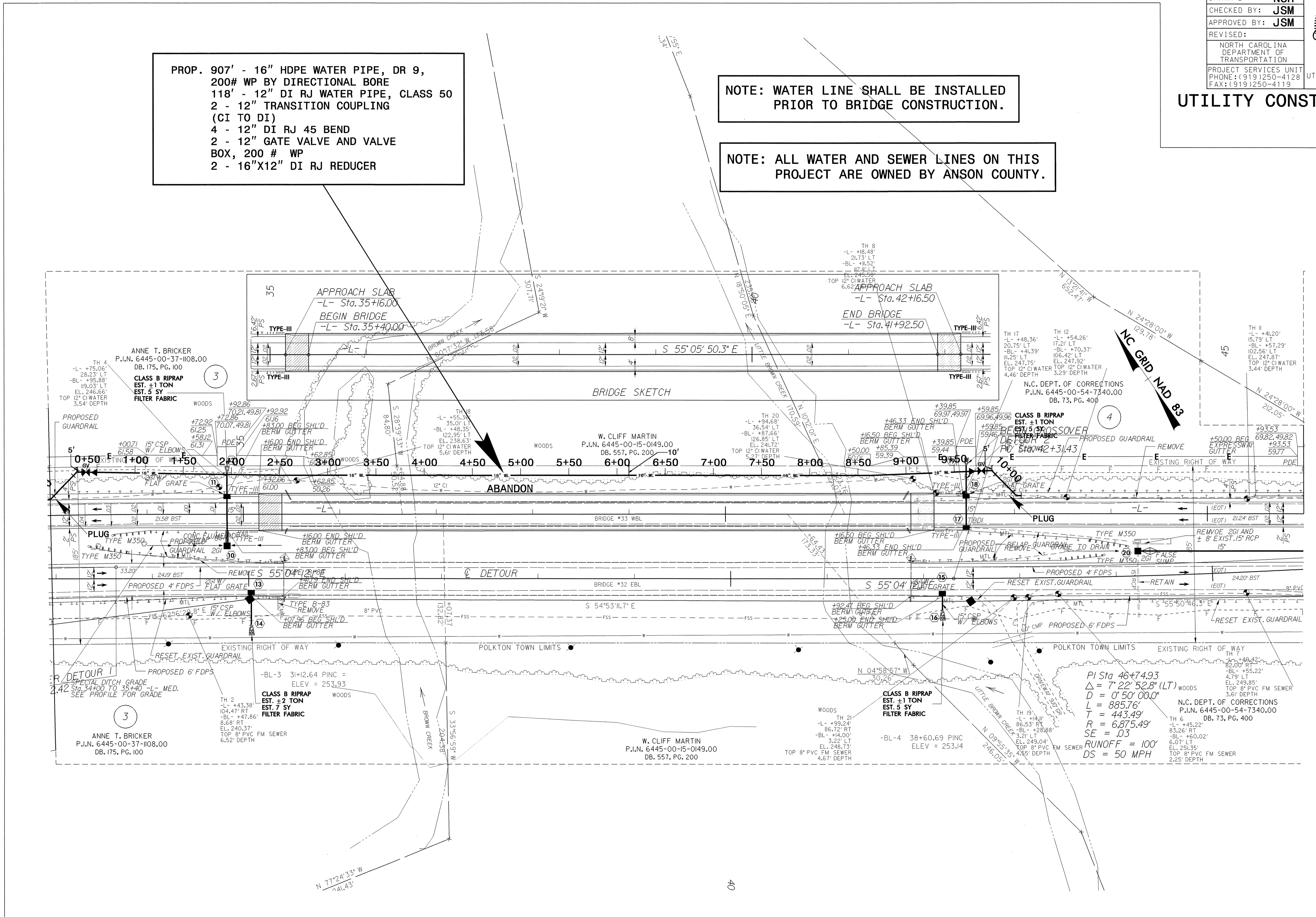


PROP. 907' - 16" HDPE WATER PIPE, DR 9,
 200# WP BY DIRECTIONAL BORE
 118' - 12" DI RJ WATER PIPE, CLASS 50
 2 - 12" TRANSITION COUPLING (CI TO DI)
 4 - 12" DI RJ 45 BEND
 2 - 12" GATE VALVE AND VALVE BOX, 200 # WP
 2 - 16"X12" DI RJ REDUCER

NOTE: WATER LINE SHALL BE INSTALLED PRIOR TO BRIDGE CONSTRUCTION.

NOTE: ALL WATER AND SEWER LINES ON THIS PROJECT ARE OWNED BY ANSON COUNTY.

UTILITY CONSTRUCTION



8/17/99