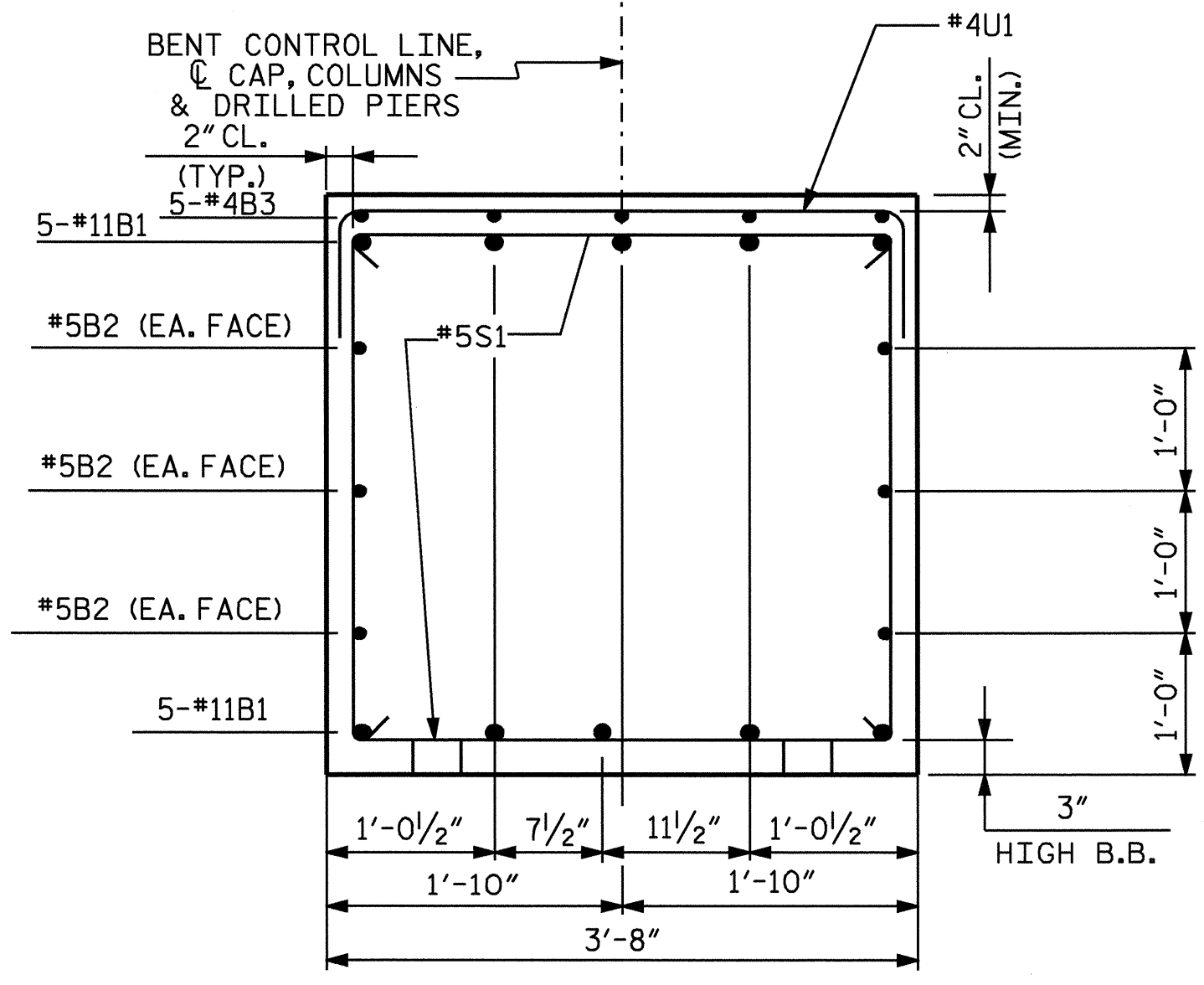
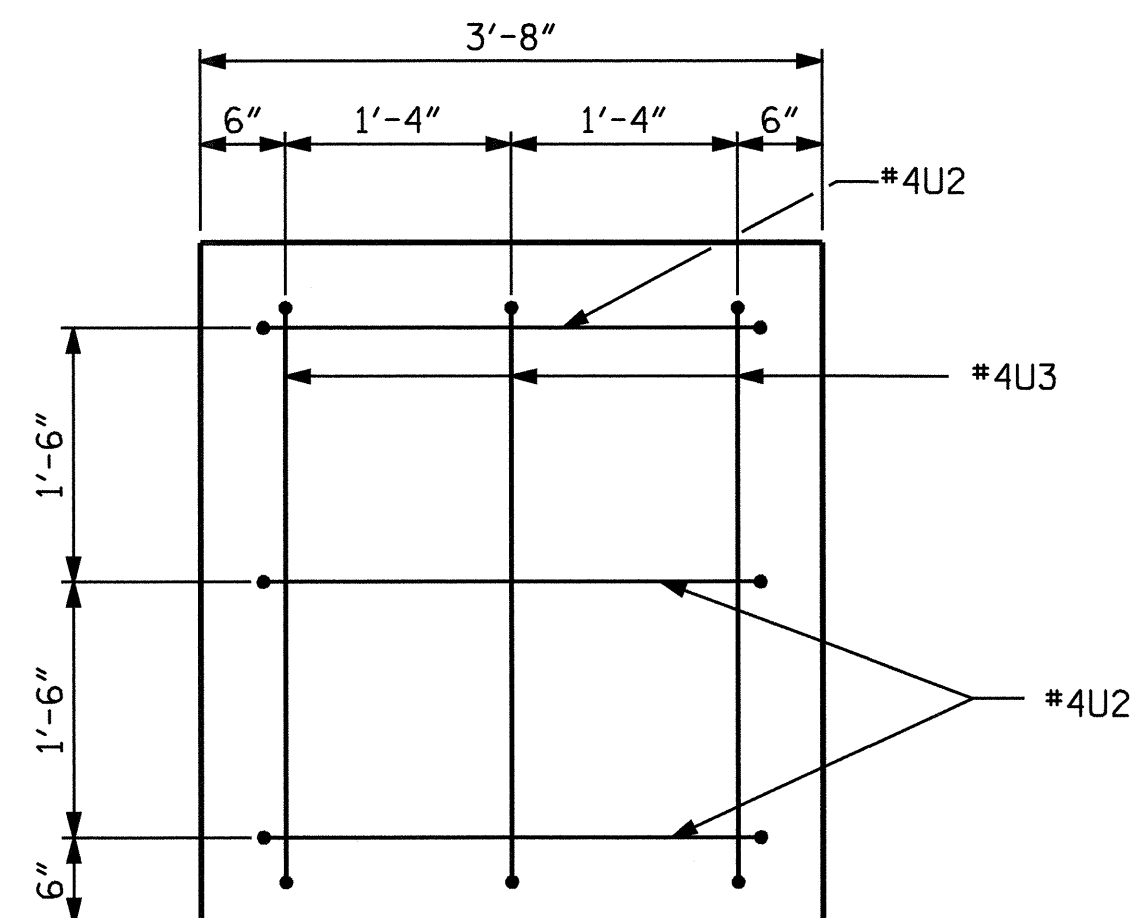


SECTION A-A

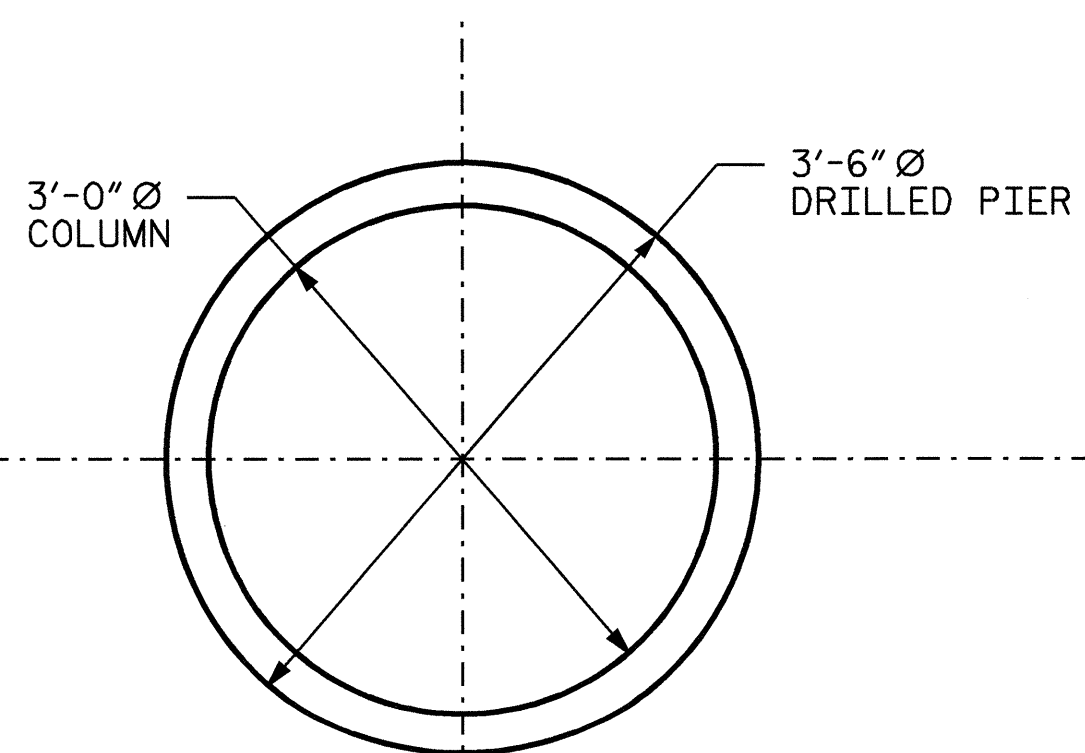


SECTION B-B

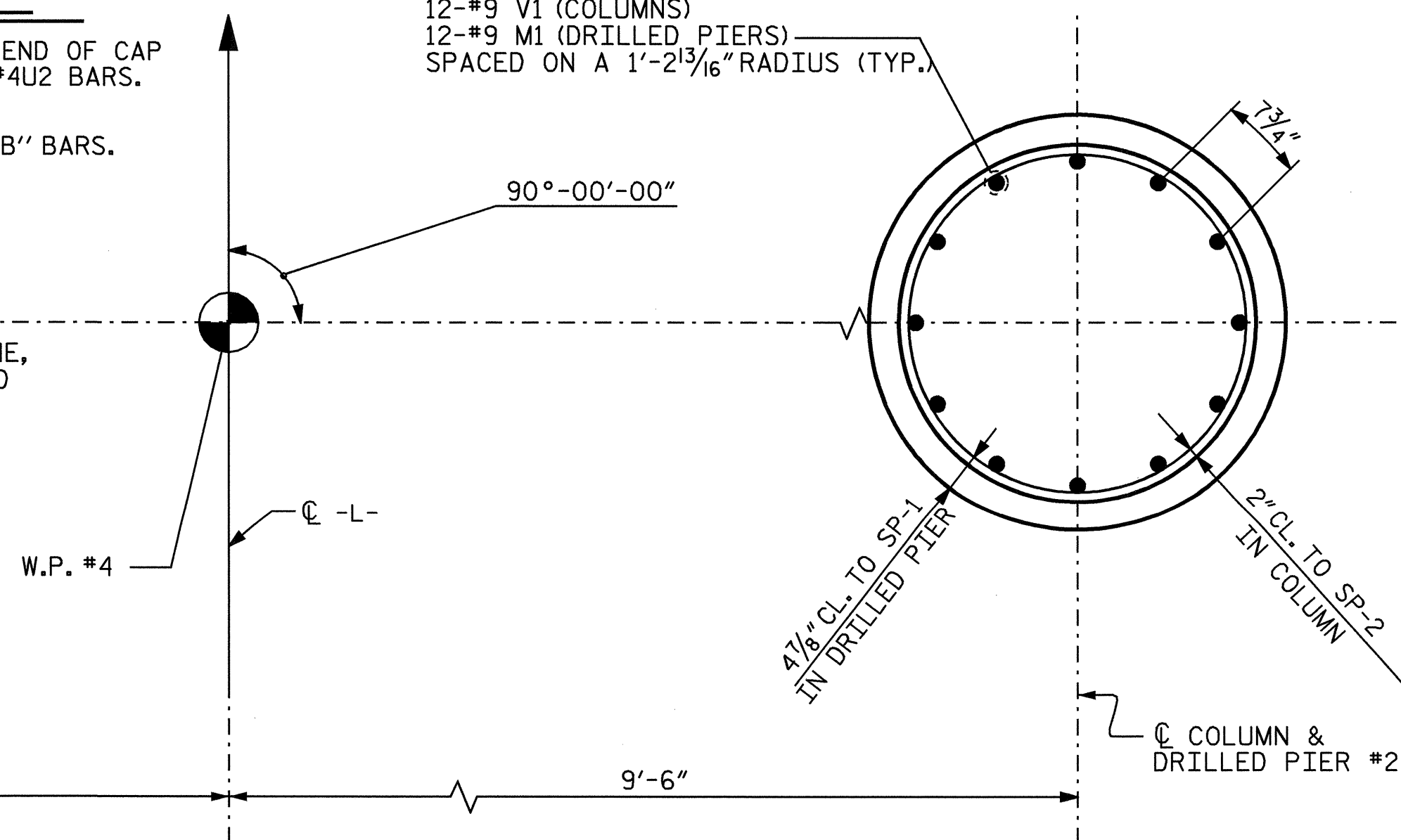


END VIEW

2" MIN. CONCRETE COVER FROM END OF CAP REQUIRED FOR ALL #4U3 AND #4U2 BARS.
#4U3 AND #4U2 BARS MAY BE SHIFTED UP TO 2" TO CLEAR "B" BARS.



12-#9 V1 (COLUMNS)
12-#9 M1 (DRILLED PIERS)
SPACED ON A 1'-2 3/16" RADIUS (TYP.)

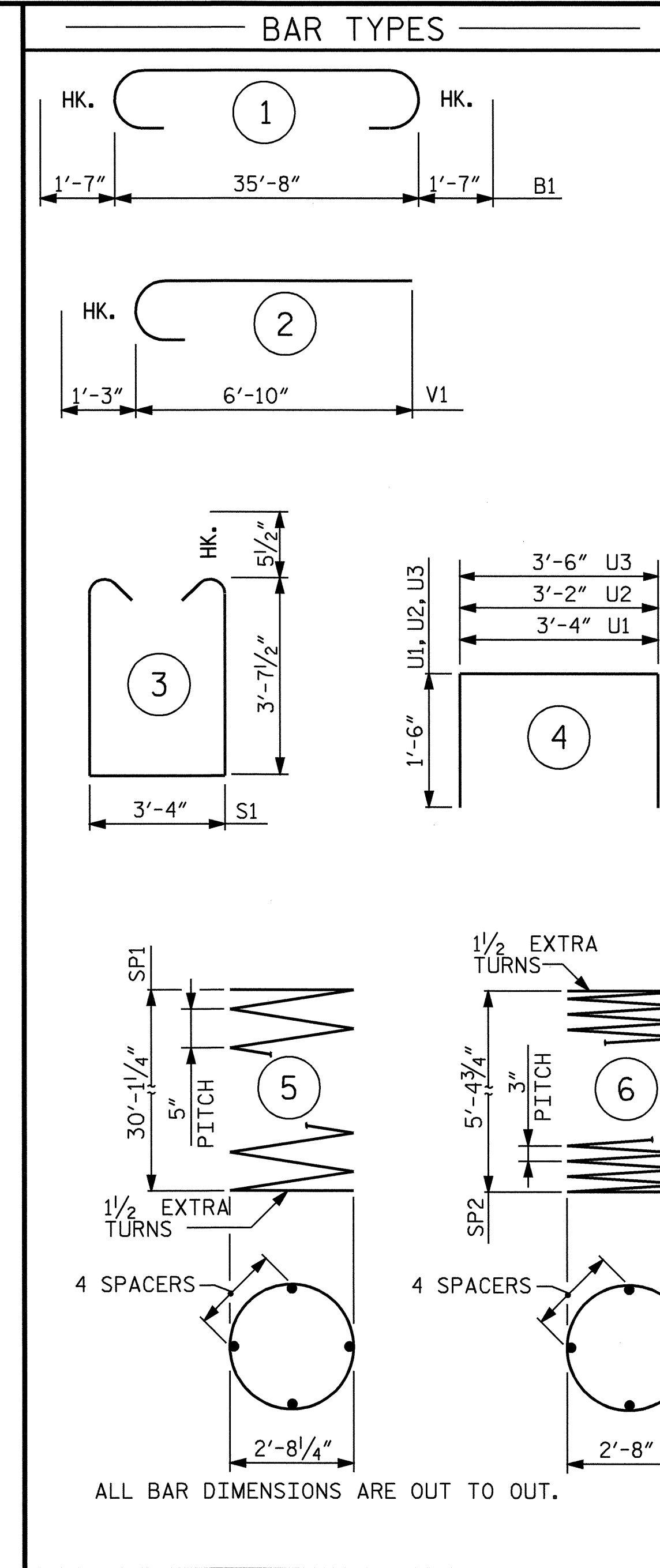


PLAN OF COLUMNS AND DRILLED PIERS

ALL COLUMNS AND DRILLED PIERS ARE IDENTICAL

DRAWN BY: A. COLE DATE: 7/05
CHECKED BY: B. GREEN DATE: 8-05

12-DEC-2005 10:10
RASTRUCT\acole\Microstation\B4009.sd.B*.dgn
adavenport



ALL BAR DIMENSIONS ARE OUT TO OUT.

* THE SP-1 SPIRAL REINFORCING STEEL SHALL BE W31 OR D-31 COLD DRAWN WIRE OR #5 PLAIN OR DEFORMED BAR.

** THE SP-2 SPIRAL REINFORCING STEEL SHALL BE W20 OR D-20 COLD DRAWN WIRE OR #4 PLAIN OR DEFORMED BAR.

BILL OF MATERIAL

BENT #3

| BAR NO. | SIZE | TYPE | LENGTH | WEIGHT |
|---------|------|------|---------|--------|
| B1 | #11 | 1 | 38'-10" | 2063 |
| B2 | #5 | STR. | 35'-10" | 224 |
| B3 | #4 | STR. | 10'-9" | 36 |
| M1 | #9 | STR. | 37'-11" | 3094 |
| S1 | #5 | 3 | 11'-6" | 456 |
| U1 | #4 | 4 | 6'-4" | 140 |
| U2 | #4 | 4 | 6'-2" | 25 |
| U3 | #4 | 4 | 6'-6" | 26 |
| V1 | #9 | 2 | 8'-1" | 660 |

REINFORCING STEEL (LBS.) 6724

SP-1 2 * 5 610'-3" 1273

SP-2 2 ** 6 191'-6" 256

SPIRAL REINFORCING STEEL (LBS.) 1529

CLASS A CONCRETE
POUR #2 (COLUMNS) 2.7 C.Y.
POUR #3 (CAP) 20.3 C.Y.
TOTAL 23.0 C.Y.

DRILLED PIERS

DRILLED PIER CONCRETE (CU. YARDS)
POUR #1 (DRILLED PIERS) 21.8 C.Y.

3'-6" Ø DRILLED PIERS IN SOIL 47.2 FT.

3'-6" Ø DRILLED PIERS NOT IN SOIL 14.0 FT.
SPT TESTING 2 EACH
SID INSPECTION 1 EACH

CROSSHOLE SONIC LOGGING 1 EACH
CSL TUBES 264.8 FT.

PERMANENT STEEL CASING FOR 3'-6" Ø DRILLED PIER 51.2 FT.

PROJECT NO. B-4009

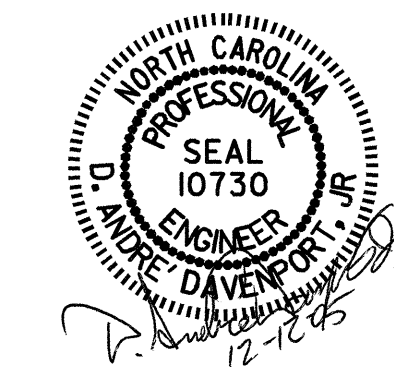
ANSON COUNTY

STATION: 38+66.50 -L-

SHEET 2 OF 2

STATE OF NORTH CAROLINA
DEPARTMENT OF TRANSPORTATION
RALEIGH

SUBSTRUCTURE
BENT #3



| REVISIONS | | | | | | SHEET NO. |
|-----------|-----|-------|-----|-----|-------|-----------------|
| NO. | BY: | DATE: | NO. | BY: | DATE: | S-37 |
| 1 | | | 3 | | | TOTAL SHEETS 64 |
| 2 | | | 4 | | | |