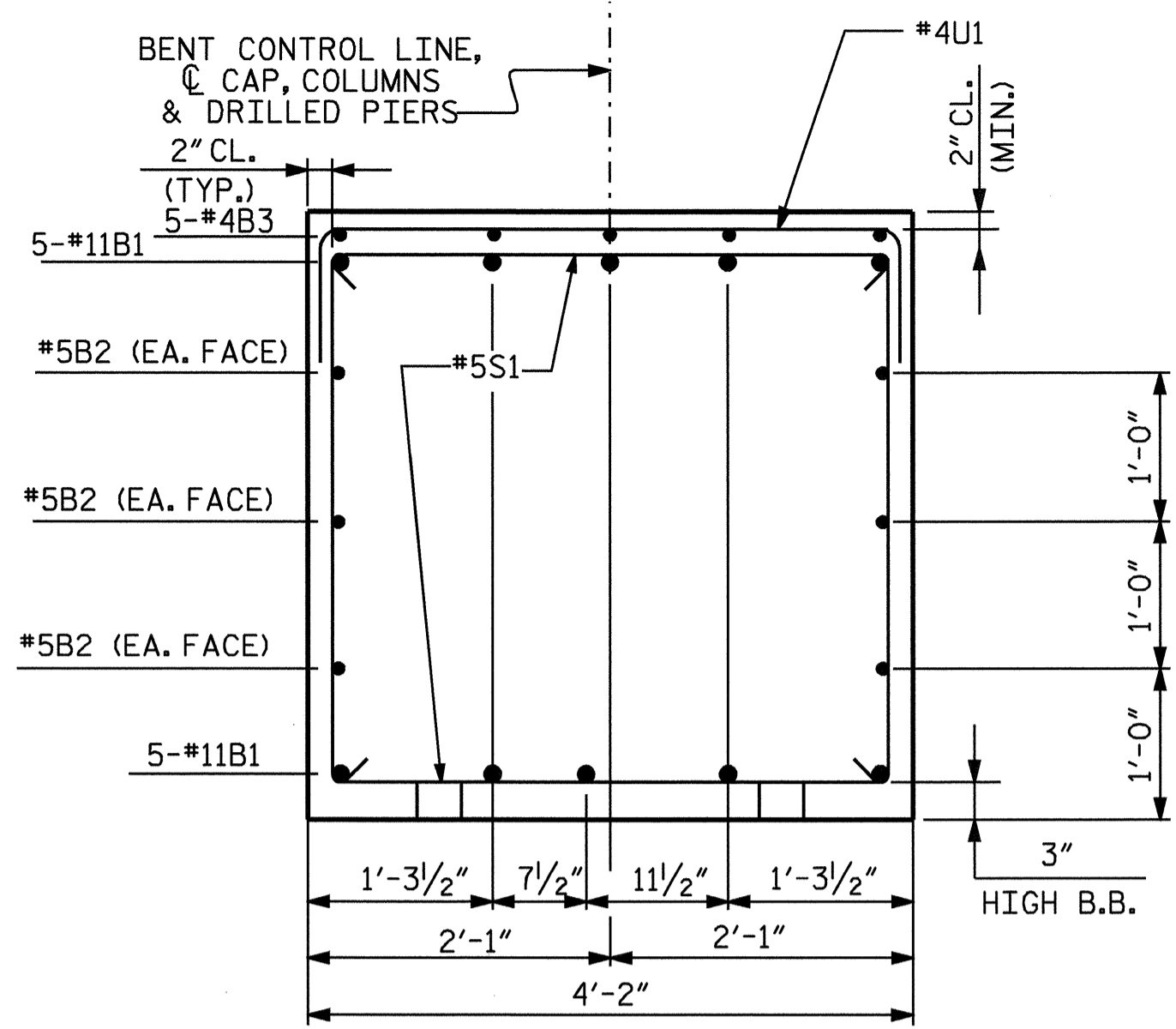
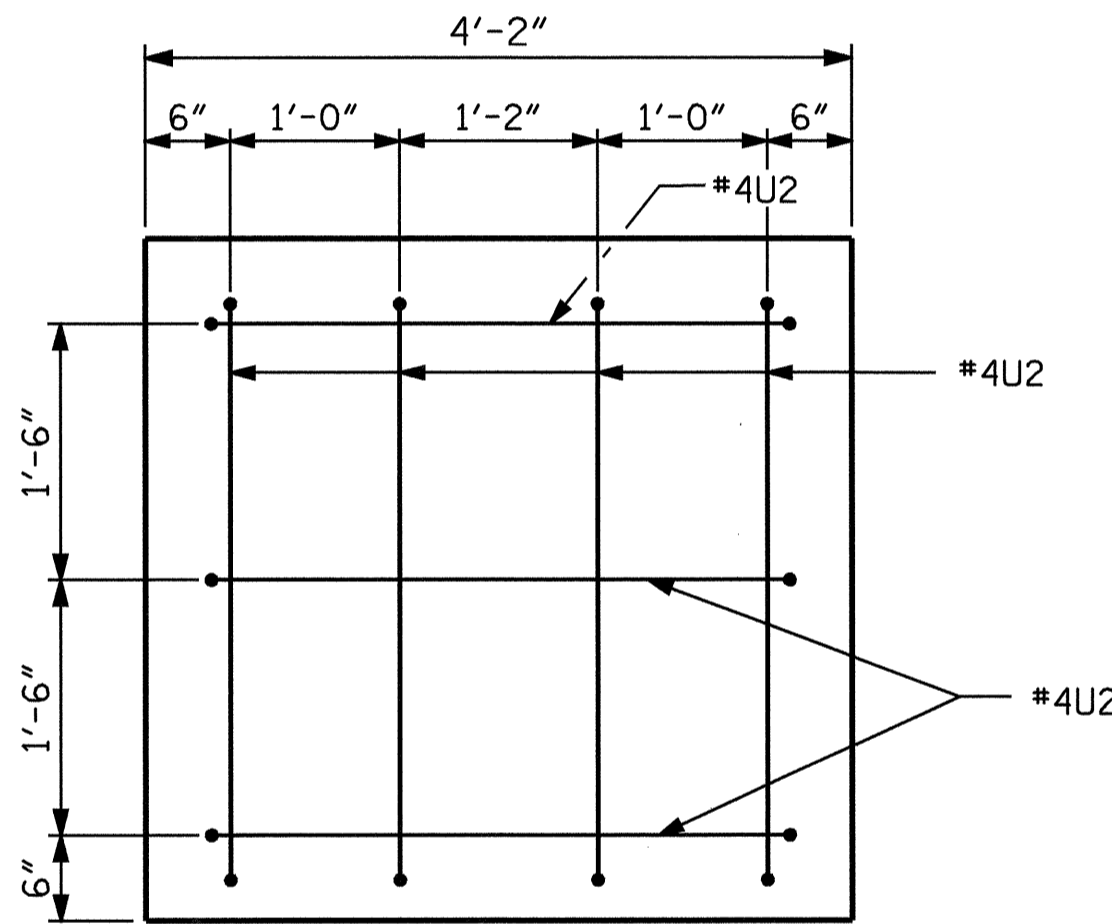


SECTION A-A

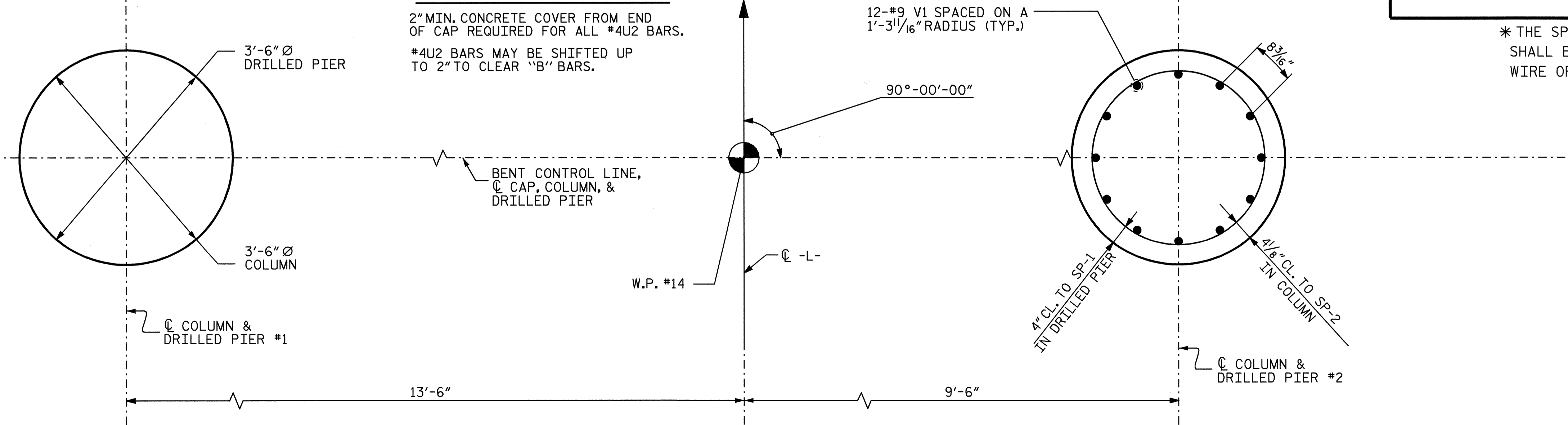


SECTION B-B



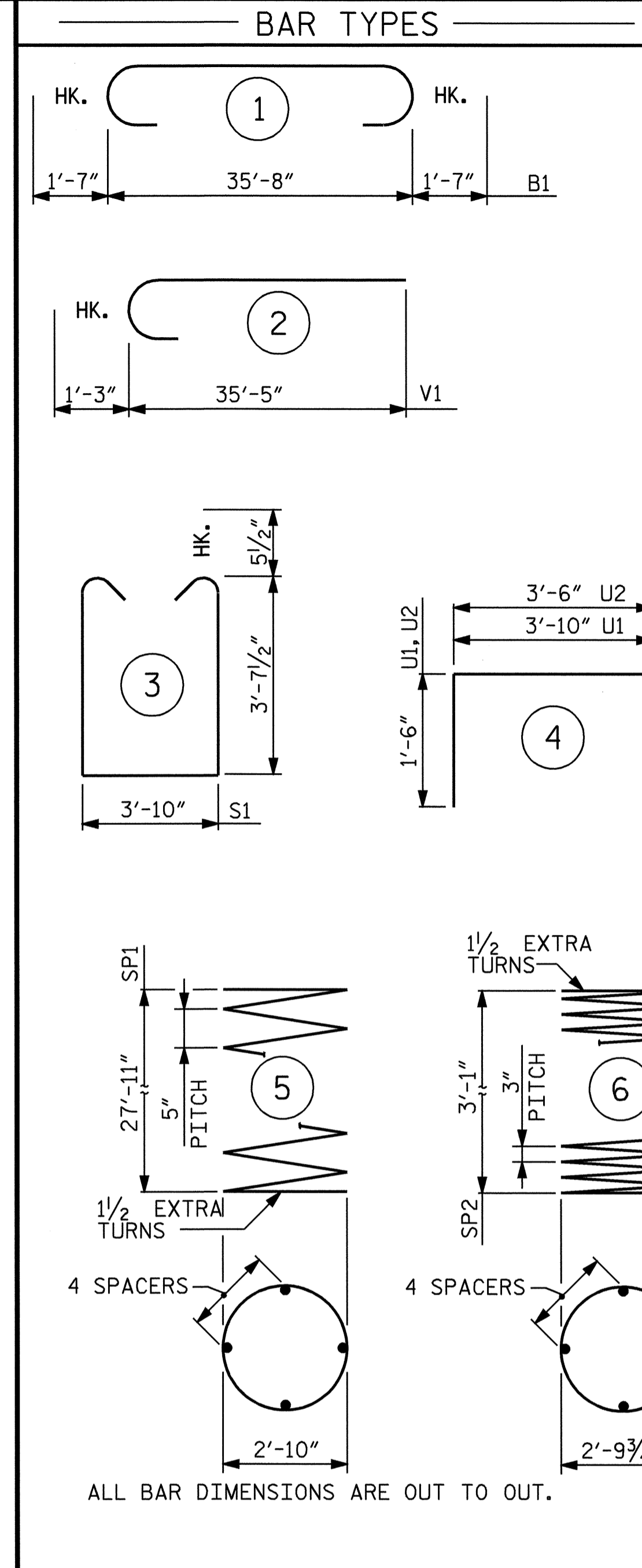
END VIEW

2" MIN. CONCRETE COVER FROM END OF CAP REQUIRED FOR ALL #4U2 BARS.
#4U2 BARS MAY BE SHIFTED UP TO 2" TO CLEAR "B" BARS.



PLAN OF COLUMNS AND DRILLED PIERS

ALL COLUMNS AND DRILLED PIERS ARE IDENTICAL



ALL BAR DIMENSIONS ARE OUT TO OUT.

* THE SP-1 SPIRAL REINFORCING STEEL SHALL BE W31 OR D-31 COLD DRAWN WIRE OR #5 PLAIN OR DEFORMED BAR.

** THE SP-2 SPIRAL REINFORCING STEEL SHALL BE W20 OR D-20 COLD DRAWN WIRE OR #4 PLAIN OR DEFORMED BAR.

BILL OF MATERIAL					
BENT #13					
BAR	NO.	SIZE	TYPE	LENGTH	WEIGHT
B1	10	#11		38'-10"	2063
B2	6	#5	STR.	35'-10"	224
B3	5	#4	STR.	10'-9"	36
V1	24	#9		36'-8"	2992
S1	36	#5		12'-0"	451
U1	33	#4		6'-10"	151
U2	14	#4		6'-6"	61
REINFORCING STEEL (LBS.)					5978
SP-1	2	*	5	598'-1"	1248
SP-2	2	**	6	121'-9"	163
SPIRAL REINFORCING STEEL (LBS.)					1411

CLASS A CONCRETE			
POUR #2 (COLUMNS)		2.0	C.Y.
POUR #3 (CAP)		23.1	C.Y.
TOTAL		25.1	C.Y.

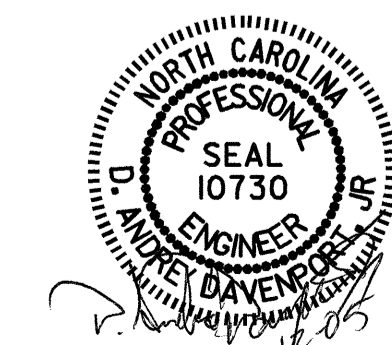
DRILLED PIERS			
DRILLED PIER CONCRETE (CU. YARDS)			
POUR #1 (DRILLED PIERS)		20.2	C.Y.
3'-6" Ø DRILLED PIERS IN SOIL		38.8	FT.
3'-6" Ø DRILLED PIERS NOT IN SOIL		18.0	FT.
SPT TESTING		2	EACH
SID INSPECTION		1	EACH
CROSSHOLE SONIC LOGGING		1	EACH
CSL TUBES		247.2	FT.
PERMANENT STEEL CASING FOR 3'-6" Ø DRILLED PIERS		42.8	FT.

PROJECT NO. B-4009
ANSON COUNTY
STATION: 38+66.50 -L-

SHEET 2 OF 2

STATE OF NORTH CAROLINA
DEPARTMENT OF TRANSPORTATION
RALEIGH

SUBSTRUCTURE BENT #13



REVISIONS						SHEET NO.
NO.	BY:	DATE:	NO.	BY:	DATE:	S-57
1			3			TOTAL SHEETS
2			4			64

DRAWN BY: A. COLE DATE: 7/05
CHECKED BY: B. GREEN DATE: 8-05