

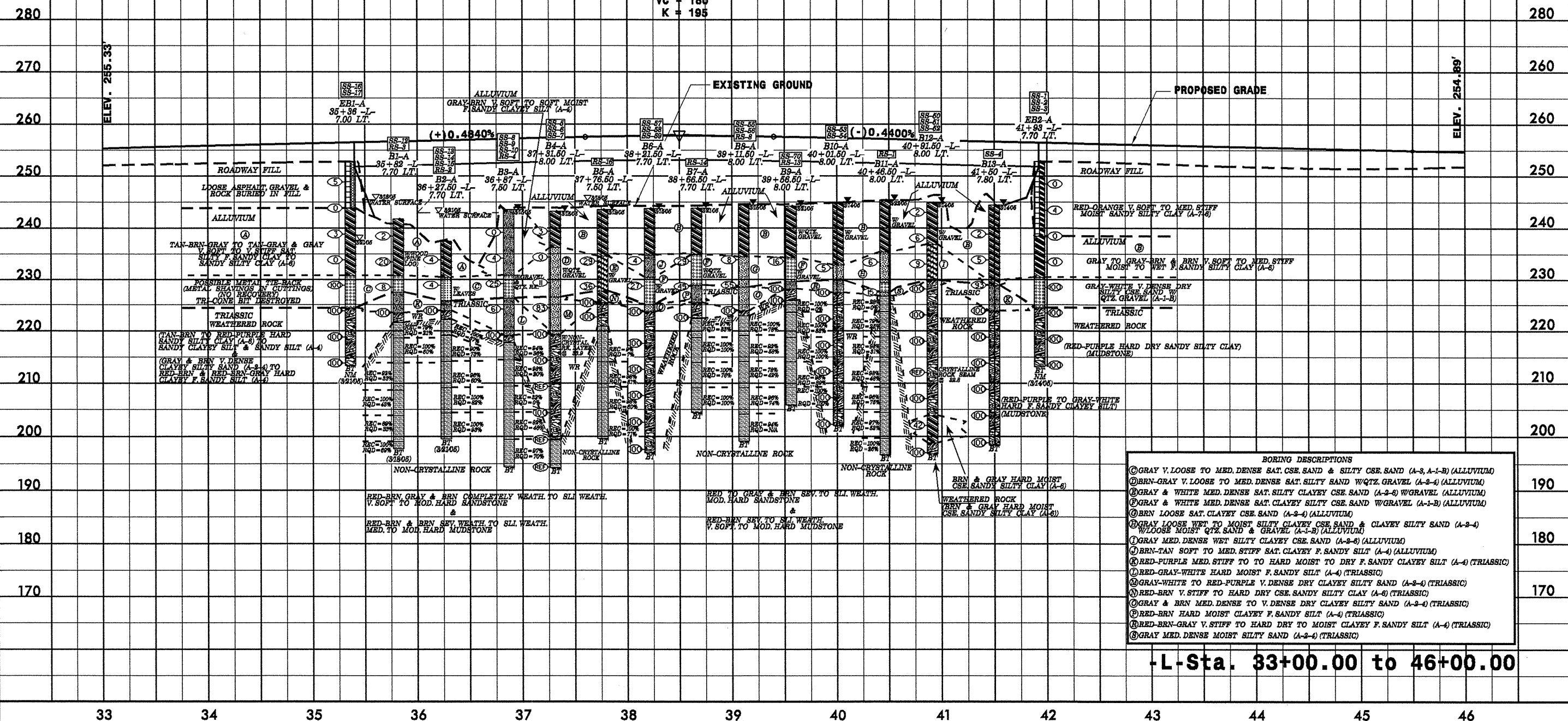
BM# 3
L Sta. 35+42.63, 45.85 (RT)
ELEV. 255.53
CHISLED SQUARE ON NW
HEADWALL OF EB BRIDGE

BM# 4
L Sta. 41+92.76, 46.07 (RT)
ELEV. 255.02
CHISLED SQUARE ON NE
HEADWALL OF EB BRIDGE

PROJECT REFERENCE NO.	B-4009	SHEET NO.	20
ROADWAY DESIGN ENGINEER		HYDRAULICS ENGINEER	
PRELIMINARY PLANS DO NOT USE FOR CONSTRUCTION			
INCOMPLETE PLANS DO NOT USE FOR A/W ACQUISITION			

BRIDGE HYDRAULIC DATA	
DESIGN DISCHARGE	= 10140 CFS
DESIGN FREQUENCY	= 50 YRS
DESIGN HW ELEVATION	= 249.8 FT
BASE DISCHARGE	= 12,400 CFS
BASE FREQUENCY	= 100 YRS
BASE HW ELEVATION	= 250.5 FT
OVERTOPPING DISCHARGE	= 18,950 CFS
OVERTOPPING FREQUENCY	= 500 YRS
OVERTOPPING ELEVATION	= 251.6 FT
DATE OF SURVEY	= 3/3/04
W.S. ELEVATION AT DATE OF SURVEY	= 243.0 FT

PI = 38+50.00
EL = 258.09'
VC = 180'
K = 195



- BORING DESCRIPTIONS**
- ① GRAY V. LOOSE TO MED. DENSE SAT. CSE. SAND & SILTY CSE. SAND (A-3, A-1-B) (ALLUVIUM)
 - ② BRN-GRAY V. LOOSE TO MED. DENSE SAT. SILTY SAND W/QTZ. GRAVEL (A-3-A) (ALLUVIUM)
 - ③ GRAY & WHITE MED. DENSE SAT. SILTY CLAYEY CSE. SAND (A-2-6) W/GRAVEL (ALLUVIUM)
 - ④ GRAY & WHITE MED. DENSE SAT. CLAYEY SILTY CSE. SAND W/GRAVEL (A-1-B) (ALLUVIUM)
 - ⑤ BRN LOOSE SAT. CLAYEY CSE. SAND (A-2-4) (ALLUVIUM)
 - ⑥ GRAY LOOSE WET TO MOIST SILTY CLAYEY CSE. SAND & CLAYEY SILTY SAND (A-2-4) W/LOOSE MOIST QTZ. SAND & GRAVEL (A-1-B) (ALLUVIUM)
 - ⑦ GRAY MED. DENSE WET SILTY CLAYEY CSE. SAND (A-2-8) (ALLUVIUM)
 - ⑧ BRN-TAN SOFT TO MED. STIFF SAT. CLAYEY F. SANDY SILT (A-4) (ALLUVIUM)
 - ⑨ RED-PURPLE MED. STIFF TO HARD MOIST TO DRY F. SANDY CLAYEY SILT (A-4) (TRIASSIC)
 - ⑩ RED-GRAY-WHITE HARD MOIST F. SANDY SILT (A-4) (TRIASSIC)
 - ⑪ GRAY-WHITE TO RED-PURPLE V. DENSE DRY CLAYEY SILTY SAND (A-2-4) (TRIASSIC)
 - ⑫ RED-BRN V. STIFF TO HARD DRY CSE. SANDY SILTY CLAY (A-6) (TRIASSIC)
 - ⑬ GRAY & BRN MED. DENSE TO V. DENSE DRY CLAYEY SILTY SAND (A-2-4) (TRIASSIC)
 - ⑭ RED-BRN HARD MOIST CLAYEY F. SANDY SILT (A-4) (TRIASSIC)
 - ⑮ RED-BRN-GRAY V. STIFF TO HARD DRY TO MOIST CLAYEY F. SANDY SILT (A-4) (TRIASSIC)
 - ⑯ GRAY MED. DENSE MOIST SILTY SAND (A-2-4) (TRIASSIC)

-L- Sta. 33+00.00 to 46+00.00