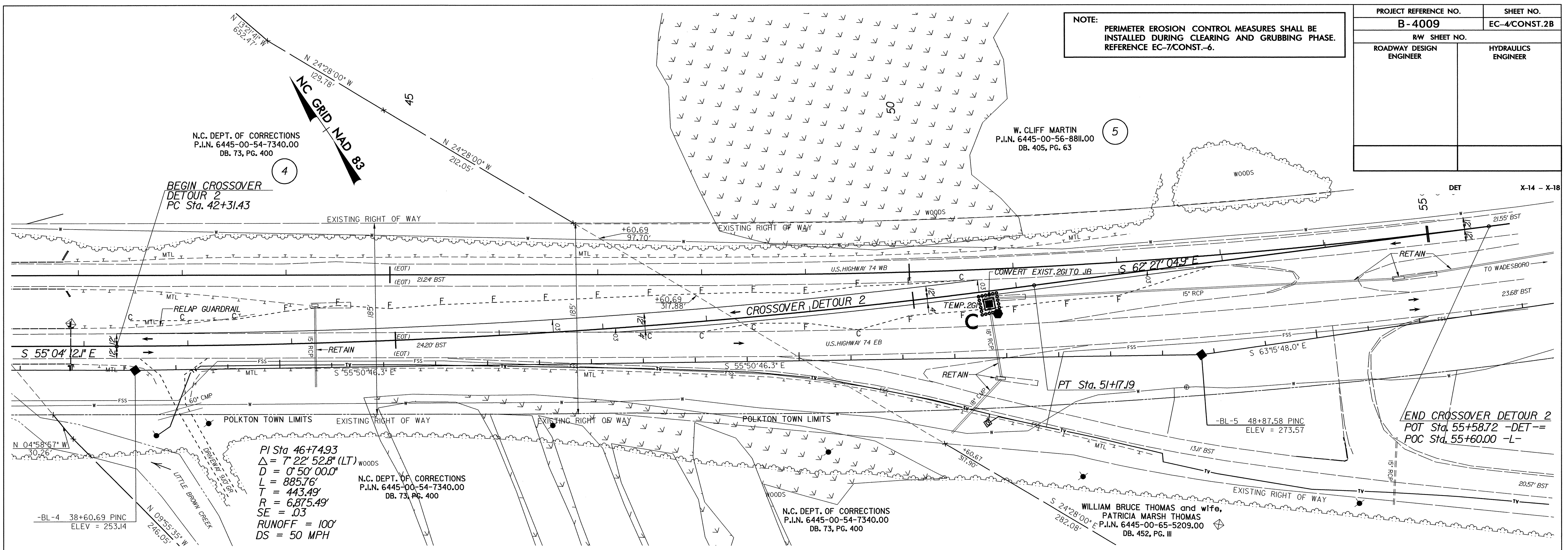


PROJECT REFERENCE NO.	SHEET NO.
B-4009	EC-4/CONST.2B
RW SHEET NO.	
ROADWAY DESIGN ENGINEER	HYDRAULICS ENGINEER

NOTE: PERIMETER EROSION CONTROL MEASURES SHALL BE INSTALLED DURING CLEARING AND GRUBBING PHASE. REFERENCE EC-7/CONST.-6.



PI Sta 46+74.93
 $\Delta = 7' 22' 52.8" (LT)$
 $D = 0' 50' 00.0"$
 $L = 885.76'$
 $T = 443.49'$
 $R = 6,875.49'$
 $SE = .03$
 $RUNOFF = 100'$
 $DS = 50 MPH$

