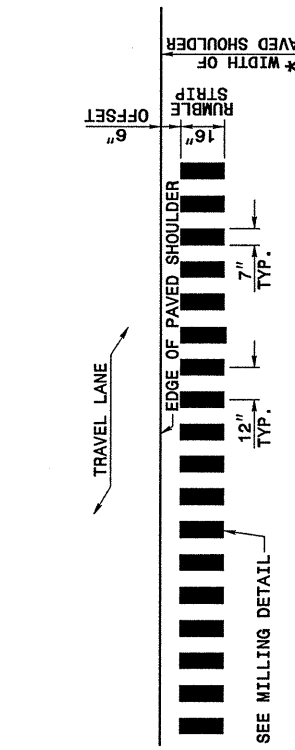


28-OCT-2004 10:41
 W:\Special Details\Verward\stda\02\stds to Special Details\english\665d01\665d01.dgn
 erward At 05212266

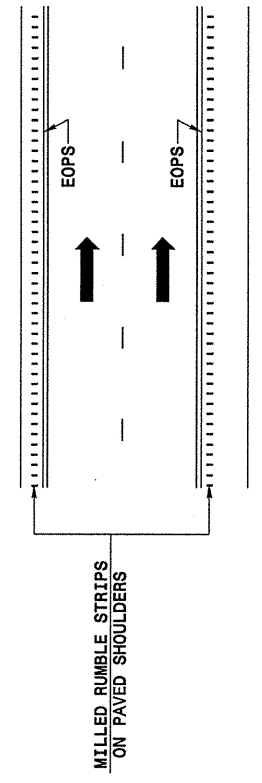
STATE OF NORTH CAROLINA
 DEPT. OF TRANSPORTATION
 DIVISION OF HIGHWAYS
 RALEIGH, N.C.

ENGLISH DETAIL DRAWING FOR
**ASPHALT SHOULDERS
 MILLED RUMBLE STRIPS**

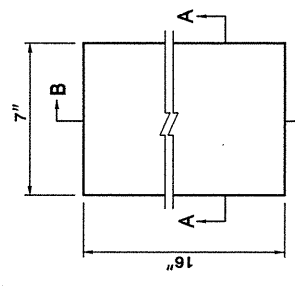
SHEET 1 OF 2
665D01



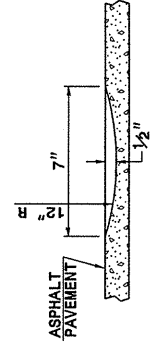
* FOR WIDTHS SEE TYPICAL SECTIONS AND PLAN SHEETS
**PLAN VIEW
 PAVED SHOULDER**



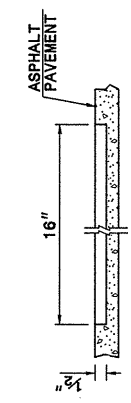
LANE TREATMENT



MILLING DETAIL



SECTION A-A



SECTION B-B

STATE OF NORTH CAROLINA
 DEPT. OF TRANSPORTATION
 DIVISION OF HIGHWAYS
 RALEIGH, N.C.

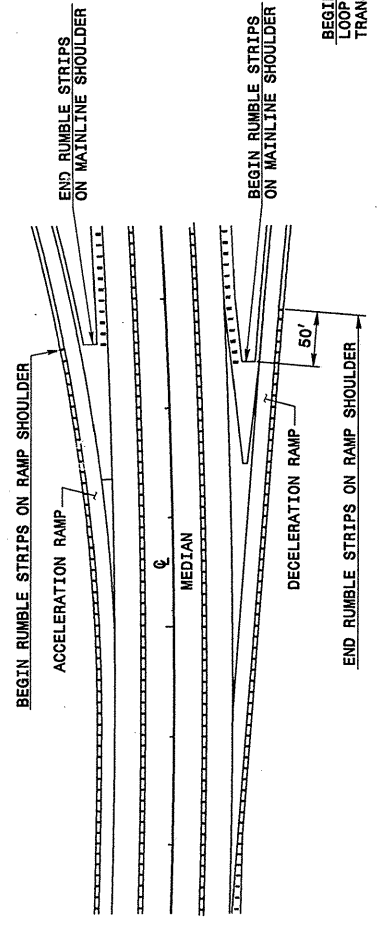
ENGLISH DETAIL DRAWING FOR
**ASPHALT SHOULDERS
 MILLED RUMBLE STRIPS**

SHEET 1 OF 2
665D01

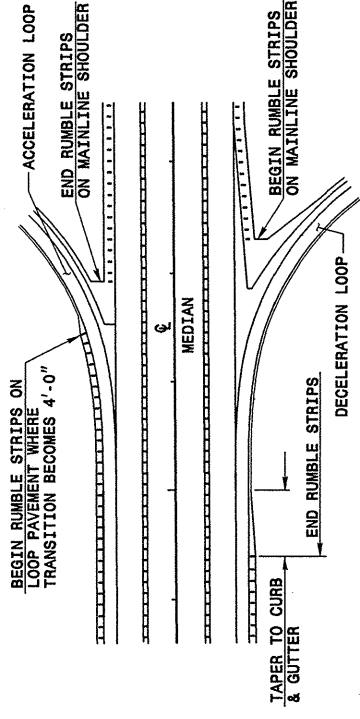
STATE OF NORTH CAROLINA
 DEPT. OF TRANSPORTATION
 DIVISION OF HIGHWAYS
 RALEIGH, N.C.

ENGLISH DETAIL DRAWING FOR
**ASPHALT SHOULDERS
 MILLED RUMBLE STRIPS**

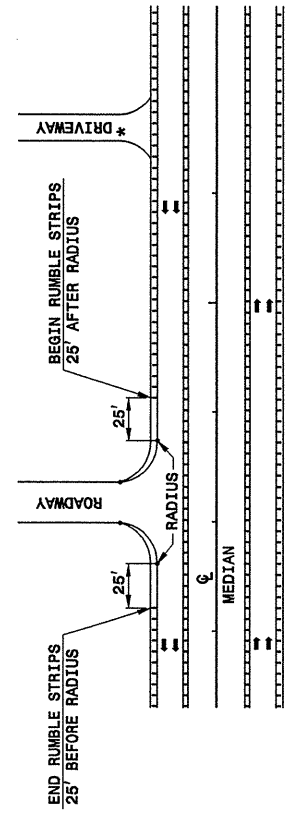
SHEET 2 OF 2
665D01



TREATMENT AT RAMP TERMINALS



TREATMENT AT LOOP TERMINALS



**TREATMENT AT INTERSECTIONS
 (ROADWAY OR DRIVEWAY)**

* TERMINATE AT DRIVEWAYS AS DIRECTED BY THE ENGINEER.

STATE OF NORTH CAROLINA
 DEPT. OF TRANSPORTATION
 DIVISION OF HIGHWAYS
 RALEIGH, N.C.

ENGLISH DETAIL DRAWING FOR
**ASPHALT SHOULDERS
 MILLED RUMBLE STRIPS**

SHEET 2 OF 2
665D01

**PROJECT SERVICES UNIT
 STANDARDS AND SPECIAL DESIGN**
 Office 919-250-4128 FAX 919-250-4119

SEE PLATE FOR TITLE

ORIGINAL BY: 2002 STANDARDS DATE: 01-15-02
 MODIFIED BY: E.E. WARD DATE: 09-16-04
 CHECKED BY: DATE:
 FILE SPEC.: stds/02stdstodetails/english/665d01.dgn