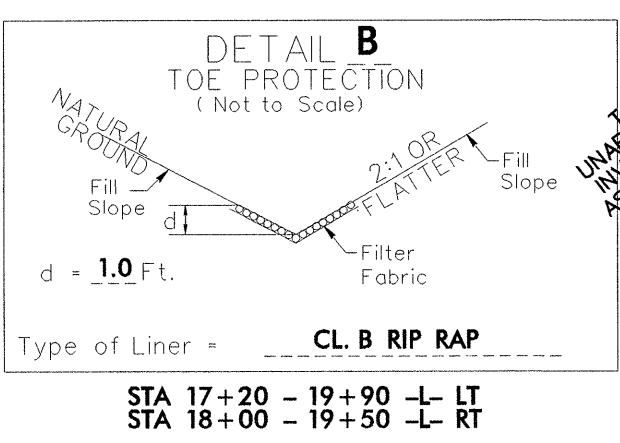
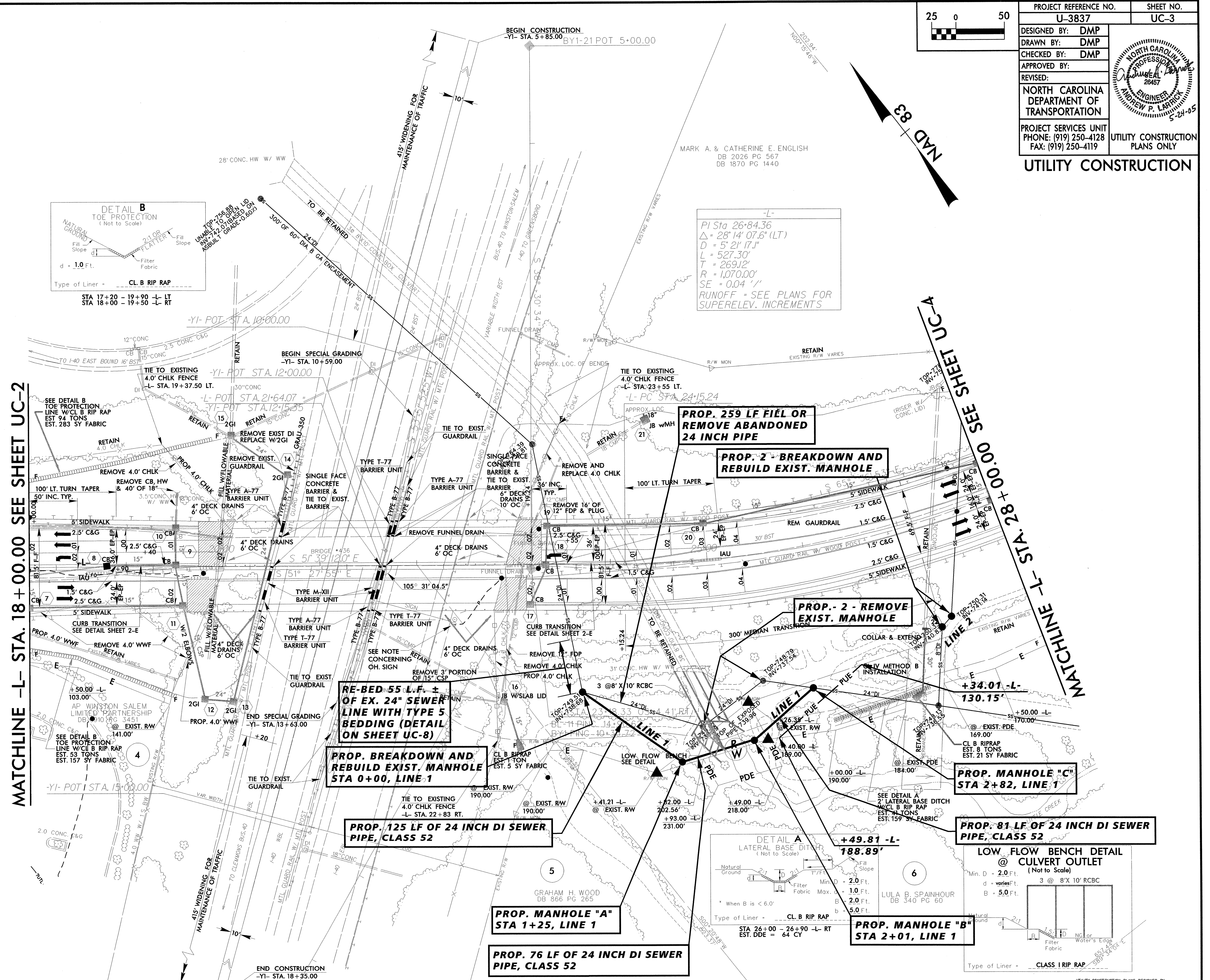


MARK A. & CATHERINE E. ENGLISH
 DB 2026 PG 567
 DB 1870 PG 1440
 -L-
 PI Sta 26+84.36
 $\Delta = 28' 14" 07.6" (LT)$
 $D = 5' 21' 17.1"$
 $L = 527.30'$
 $T = 269.12'$
 $R = 1,070.00'$
 $SE = 0.04 \%$
 RUNOFF = SEE PLANS FOR SUPERELEV. INCREMENTS

MATCHLINE -L- STA. 18 + 00.00 SEE SHEET UC-2

MATCHLINE -L- STA. 282 + 00.00 SEE SHEET UC-4



PROP. 259 LF FIEL OR REMOVE ABANDONED 24 INCH PIPE

PROP. 2 - BREAKDOWN AND REBUILD EXIST. MANHOLE

PROP. 2 - REMOVE EXIST. MANHOLE

RE-BED 55 LF OF EX. 24" SEWER LINE WITH TYPE 5 BEDDING (DETAIL ON SHEET UC-8)

PROP. BREAKDOWN AND REBUILD EXIST. MANHOLE STA 0+00, LINE 1

PROP. 125 LF OF 24 INCH DI SEWER PIPE, CLASS 52

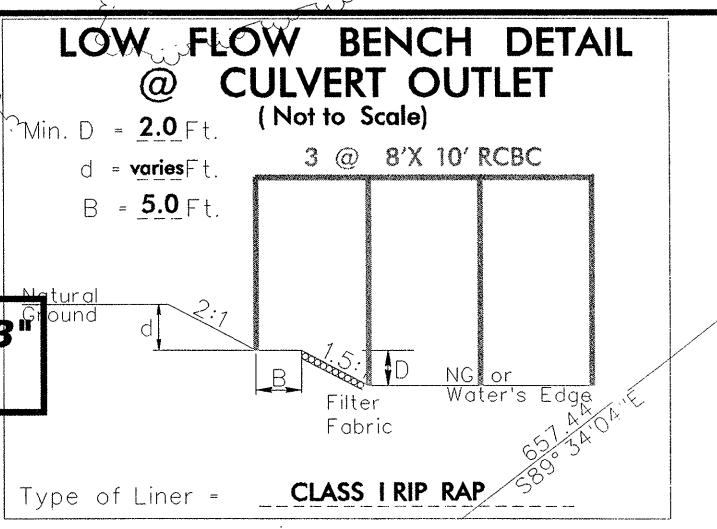
PROP. MANHOLE "A" STA 1+25, LINE 1

PROP. 76 LF OF 24 INCH DI SEWER PIPE, CLASS 52

PROP. MANHOLE "B" STA 2+01, LINE 1

PROP. MANHOLE "C" STA 2+82, LINE 1

PROP. 81 LF OF 24 INCH DI SEWER PIPE, CLASS 52



SEE SHEETS TCP-1 THRU TCP-? FOR TRAFFIC CONTROL PLANS

SEE SHEET UC-7 FOR PROFILES OF LINE 1 AND LINE 2