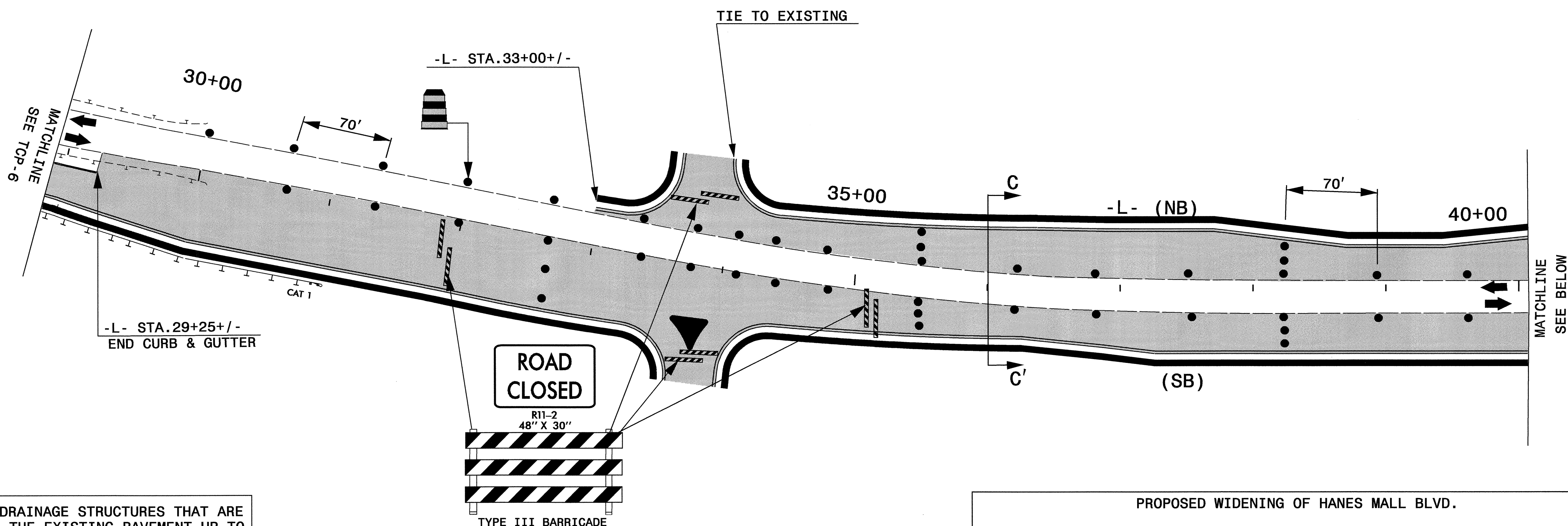
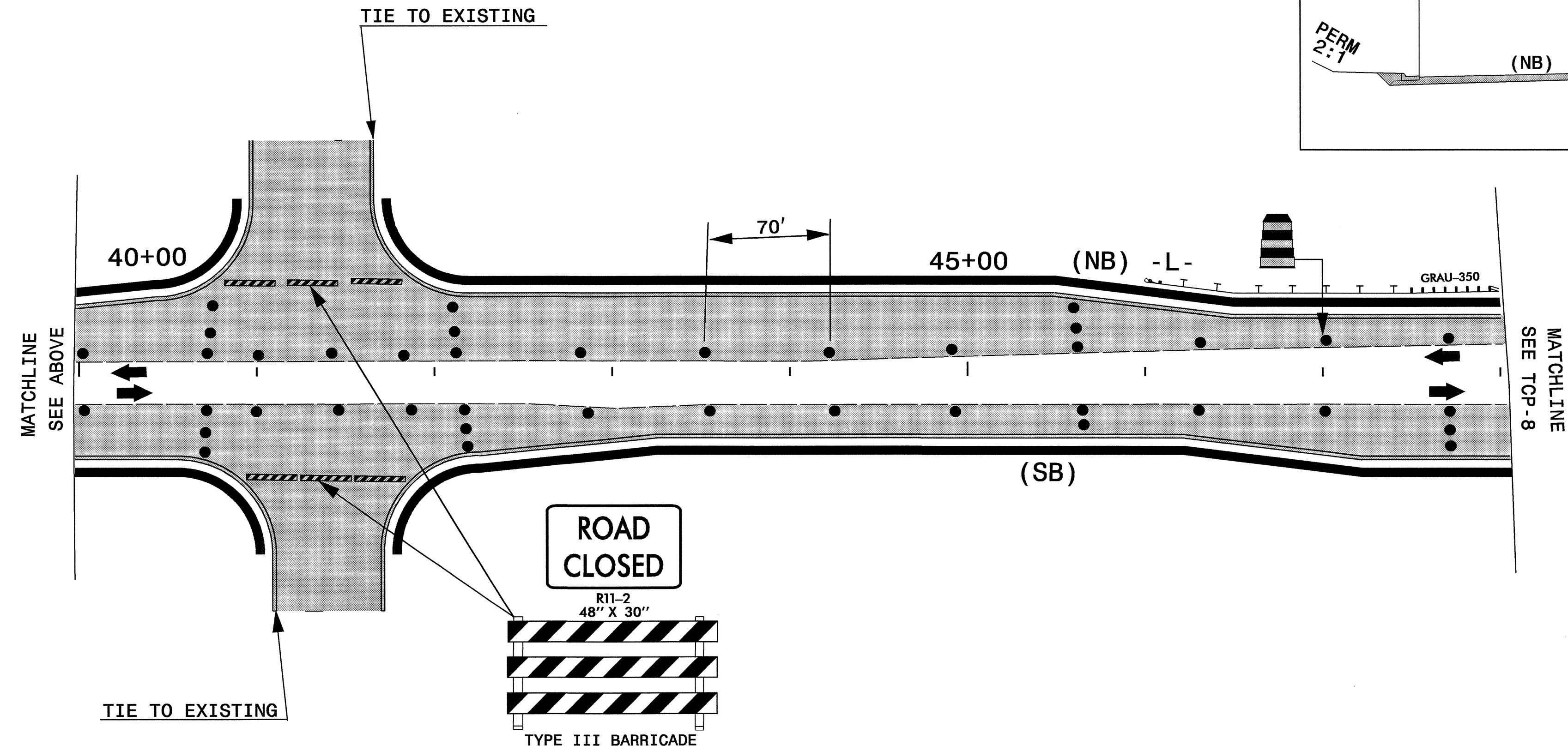
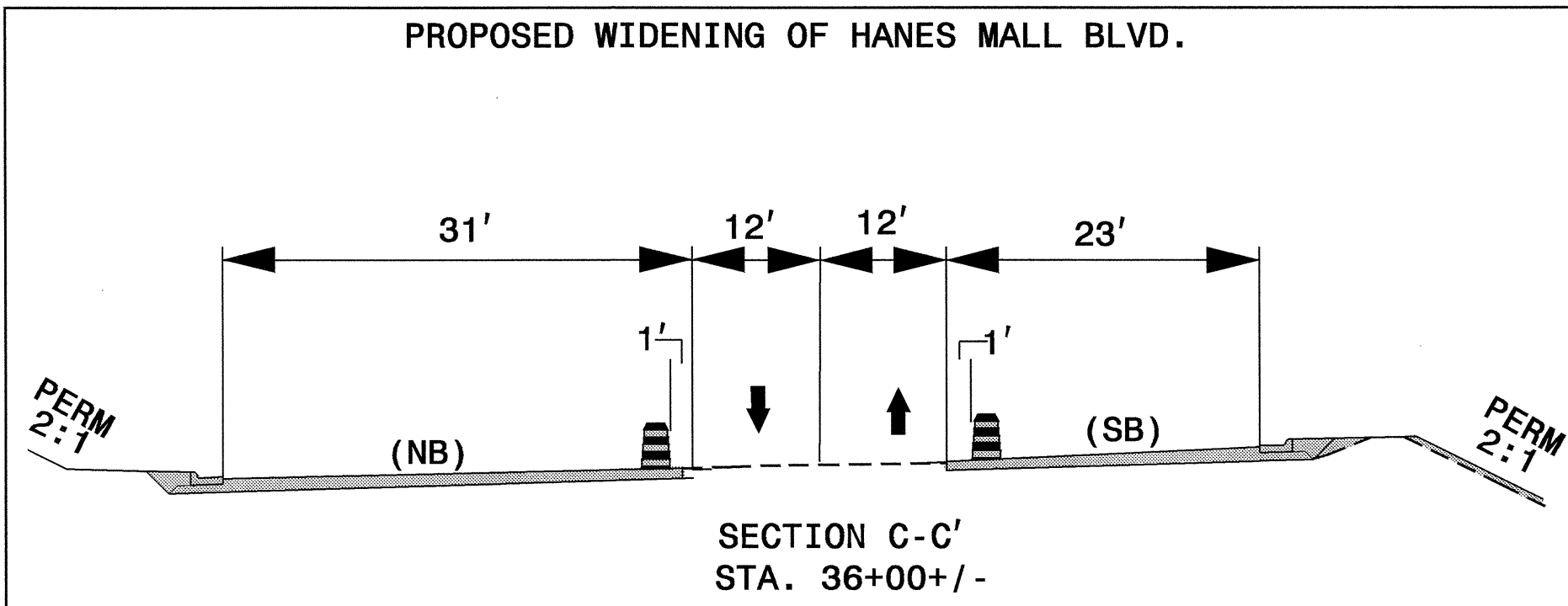


WIDENING OF HANES MALL BLVD.

ALL MARKINGS ARE EXISTING



CONSTRUCT DRAINAGE STRUCTURES THAT ARE LOCATED IN THE EXISTING PAVEMENT UP TO THE EXISTING ELEVATION AND COVER WITH A TRAFFIC BEARING STEEL PLATE, AS NEEDED. (SEE ROADWAY PLANS)



APPROVED: *Joseph Ishak* DATE: 1/26/03

SEAL

 SEAL 028380 ENGINEER JOSEPH ISHAK

PHASE I, DETAIL 2

SCALE: NONE
 DATE: NOV 03
 DWG. BY: MM
 DESIGN BY: MM
 REVIEWED BY: JI



REVISIONS	

25-JAN-2005 08:51
 e:\s-ccts\15\15374\TCP\TCP+cp-7.dgn
 mmrkey AT 10:03:45