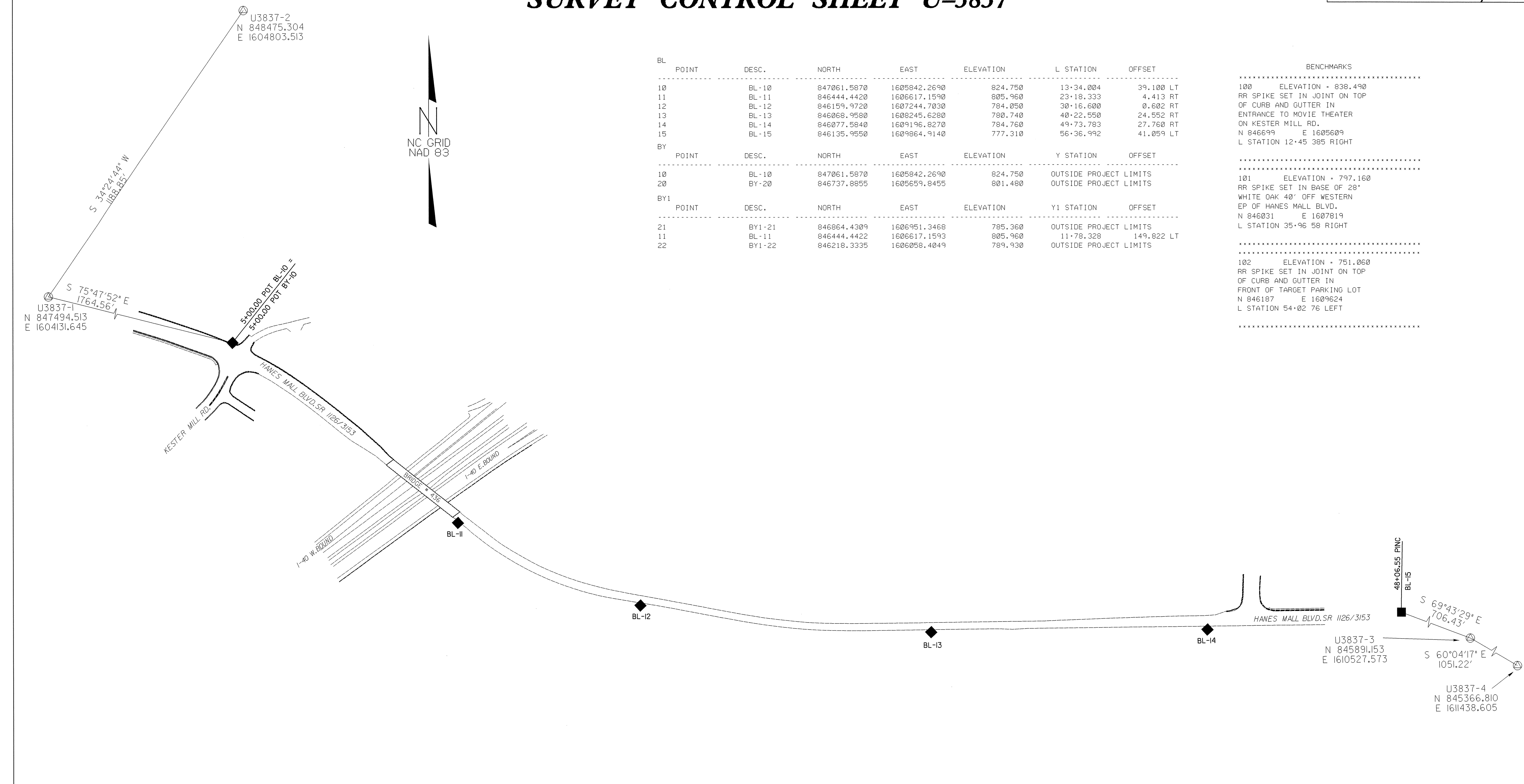


# SURVEY CONTROL SHEET U-3837

6/2/99



| BL POINT | DESC. | NORTH       | EAST         | ELEVATION | L STATION | OFFSET    |
|----------|-------|-------------|--------------|-----------|-----------|-----------|
| 10       | BL-10 | 847061.5870 | 1605842.2690 | 824.750   | 13+34.004 | 39.100 LT |
| 11       | BL-11 | 846444.4420 | 1606617.1590 | 805.960   | 23+18.333 | 4.413 RT  |
| 12       | BL-12 | 846159.9720 | 1607244.7030 | 784.050   | 30+16.600 | 0.602 RT  |
| 13       | BL-13 | 846068.9580 | 1608245.6280 | 780.740   | 40+22.550 | 24.552 RT |
| 14       | BL-14 | 846077.5840 | 1609196.8270 | 784.760   | 49+73.783 | 27.760 RT |
| 15       | BL-15 | 846135.9550 | 1609864.9140 | 777.310   | 56+36.992 | 41.059 LT |

| BY POINT | DESC. | NORTH       | EAST         | ELEVATION | Y STATION              | OFFSET |
|----------|-------|-------------|--------------|-----------|------------------------|--------|
| 10       | BL-10 | 847061.5870 | 1605842.2690 | 824.750   | OUTSIDE PROJECT LIMITS |        |
| 20       | BY-20 | 846737.8855 | 1605659.8455 | 801.480   | OUTSIDE PROJECT LIMITS |        |

| BY1 POINT | DESC.  | NORTH       | EAST         | ELEVATION | Y1 STATION             | OFFSET     |
|-----------|--------|-------------|--------------|-----------|------------------------|------------|
| 21        | BY1-21 | 846864.4309 | 1606951.3468 | 785.360   | OUTSIDE PROJECT LIMITS |            |
| 11        | BL-11  | 846444.4422 | 1606617.1593 | 805.960   | 11+78.328              | 149.822 LT |
| 22        | BY1-22 | 846218.3335 | 1606058.4049 | 789.930   | OUTSIDE PROJECT LIMITS |            |

**BENCHMARKS**

.....

100 ELEVATION = 838.490  
RR SPIKE SET IN JOINT ON TOP  
OF CURB AND GUTTER IN  
ENTRANCE TO MOVIE THEATER  
ON KESTER MILL RD.  
N 846699 E 1605609  
L STATION 12+45 385 RIGHT

.....

101 ELEVATION = 797.160  
RR SPIKE SET IN BASE OF 28"  
WHITE OAK 40' OFF WESTERN  
EP OF HANES MALL BLVD.  
N 846031 E 1607819  
L STATION 35+96 58 RIGHT

.....

102 ELEVATION = 751.060  
RR SPIKE SET IN JOINT ON TOP  
OF CURB AND GUTTER IN  
FRONT OF TARGET PARKING LOT  
N 846187 E 1609624  
L STATION 54+02 76 LEFT

.....

**DATUM DESCRIPTION**

THE LOCALIZED COORDINATE SYSTEM DEVELOPED FOR THIS PROJECT IS BASED ON THE STATE PLANE COORDINATES ESTABLISHED BY NCDOT FOR MONUMENT "U3837-1"

WITH STATE PLANE GRID COORDINATES OF  
NORTHING: 847494.513 EASTING: 160413.645(f1)  
THE AVERAGE COMBINED GRID FACTOR USED ON THIS PROJECT (GROUND TO GRID) IS: 0.99993920

THE N.C. LAMBERT GRID BEARING AND LOCALIZED HORIZONTAL GROUND DISTANCE FROM "U3837-1" TO L- STATION 10+00.00 IS  
S 75°29'47" E 1425.32'

ALL LINEAR DIMENSIONS ARE LOCALIZED HORIZONTAL DISTANCES  
VERTICAL DATUM USED IS

**NOTES:**

- THE CONTROL DATA FOR THIS PROJECT CAN BE FOUND ELECTRONICALLY BY SELECTING PROJECT CONTROL DATA AT:  
[HTTP://WWW.DOH.DOT.STATE.NC.US/PRECONSTRUCT/HIGHWAY/LOCATION/PROJECT U3837\\_CONTROL\\_LS\\_031009.TXT](http://www.doh.dot.state.nc.us/preconstruct/highway/location/project/U3837_CONTROL_LS_031009.TXT)
- SITE CALIBRATION INFORMATION HAS NOT BEEN PROVIDED FOR THIS PROJECT. IF FURTHER INFORMATION IS NEEDED, PLEASE CONTACT THE LOCATION AND SURVEYS UNIT.
- INDICATES GEODETIC CONTROL MONUMENTS USED OR SET FOR HORIZONTAL PROJECT CONTROL BY THE NCDOT LOCATION AND SURVEYS UNIT.
- PROJECT CONTROL ESTABLISHED USING GLOBAL POSITIONING SYSTEM.

**NOTE: DRAWING NOT TO SCALE**

13-DEC-2004 07:53  
R:\Proj\U3837\1\1c\DWGardner rd-07oce34.dwg  
DWGardner AT RD212399