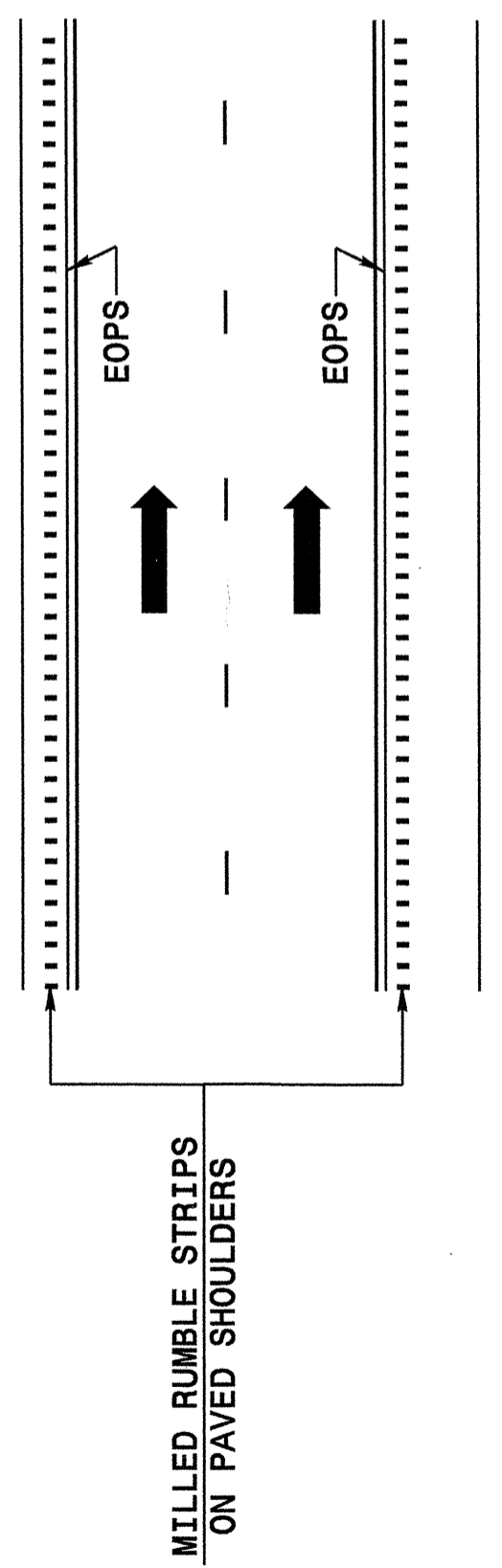
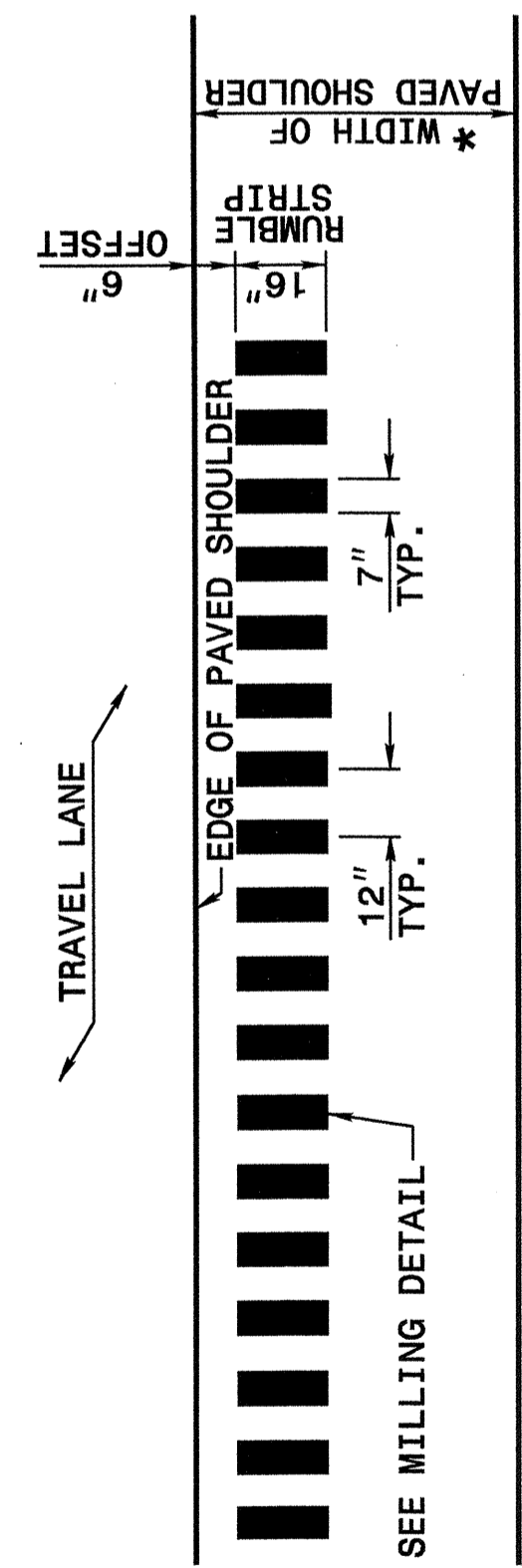
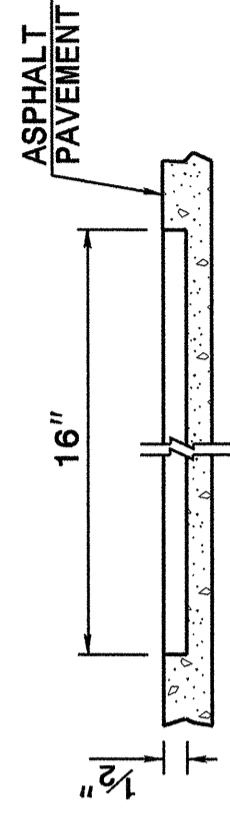
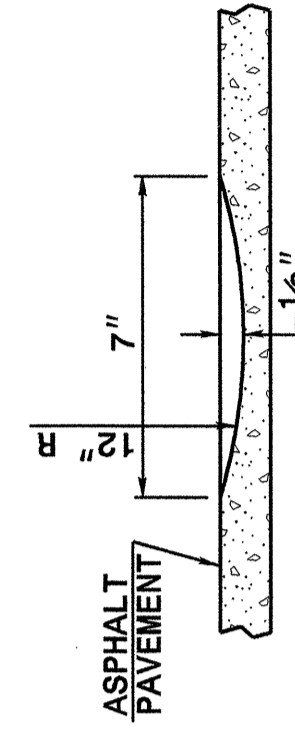
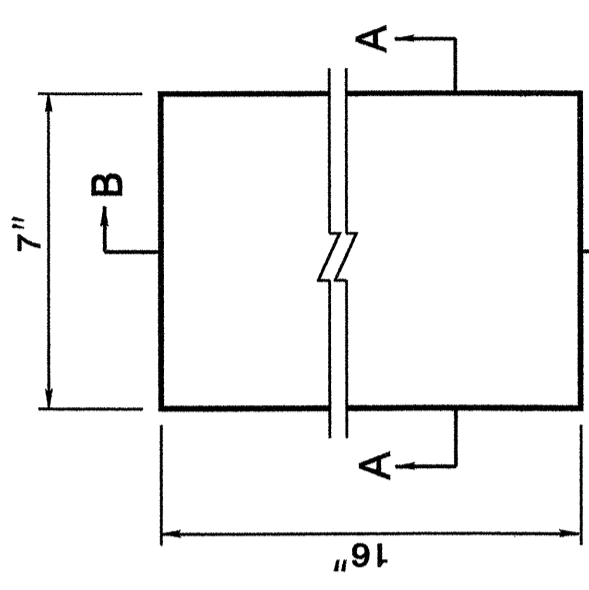


STATE OF NORTH CAROLINA
DEPT. OF TRANSPORTATION
DIVISION OF HIGHWAYS
RALEIGH, N.C.

ENGLISH DETAIL DRAWING FOR
**ASPHALT SHOULDERS
MILLED RUMBLE STRIPS**

SHEET 1 OF 2
665D01



STATE OF NORTH CAROLINA
DEPT. OF TRANSPORTATION
DIVISION OF HIGHWAYS
RALEIGH, N.C.

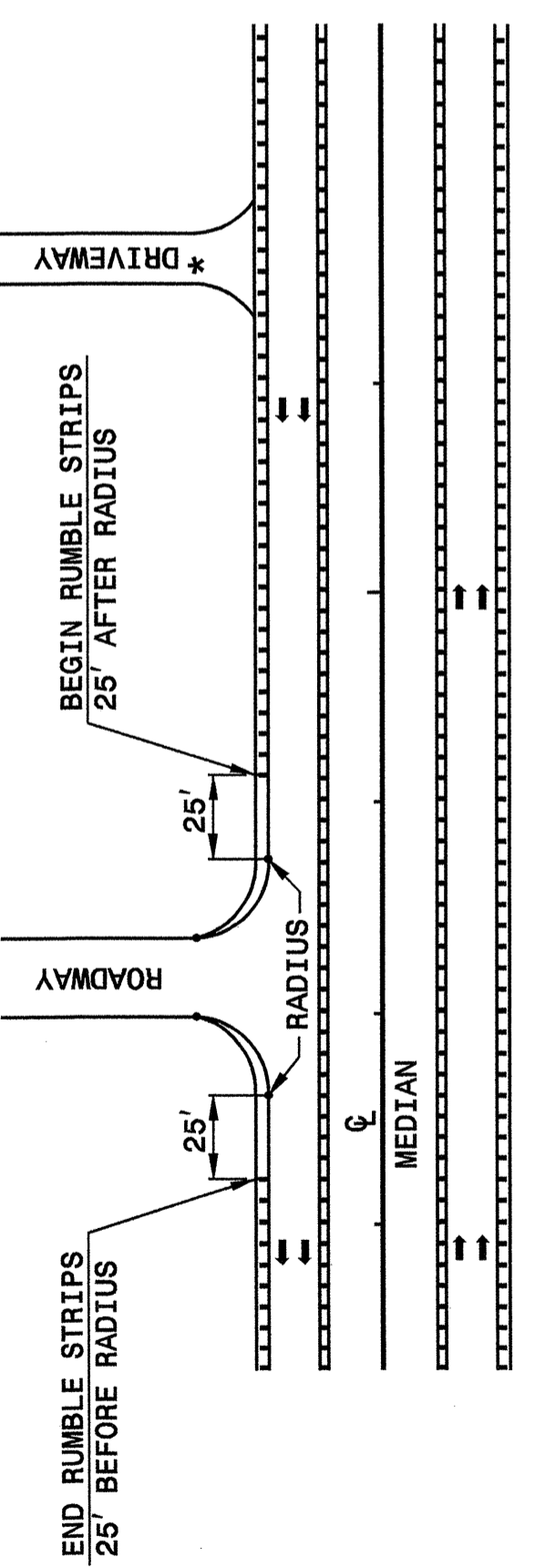
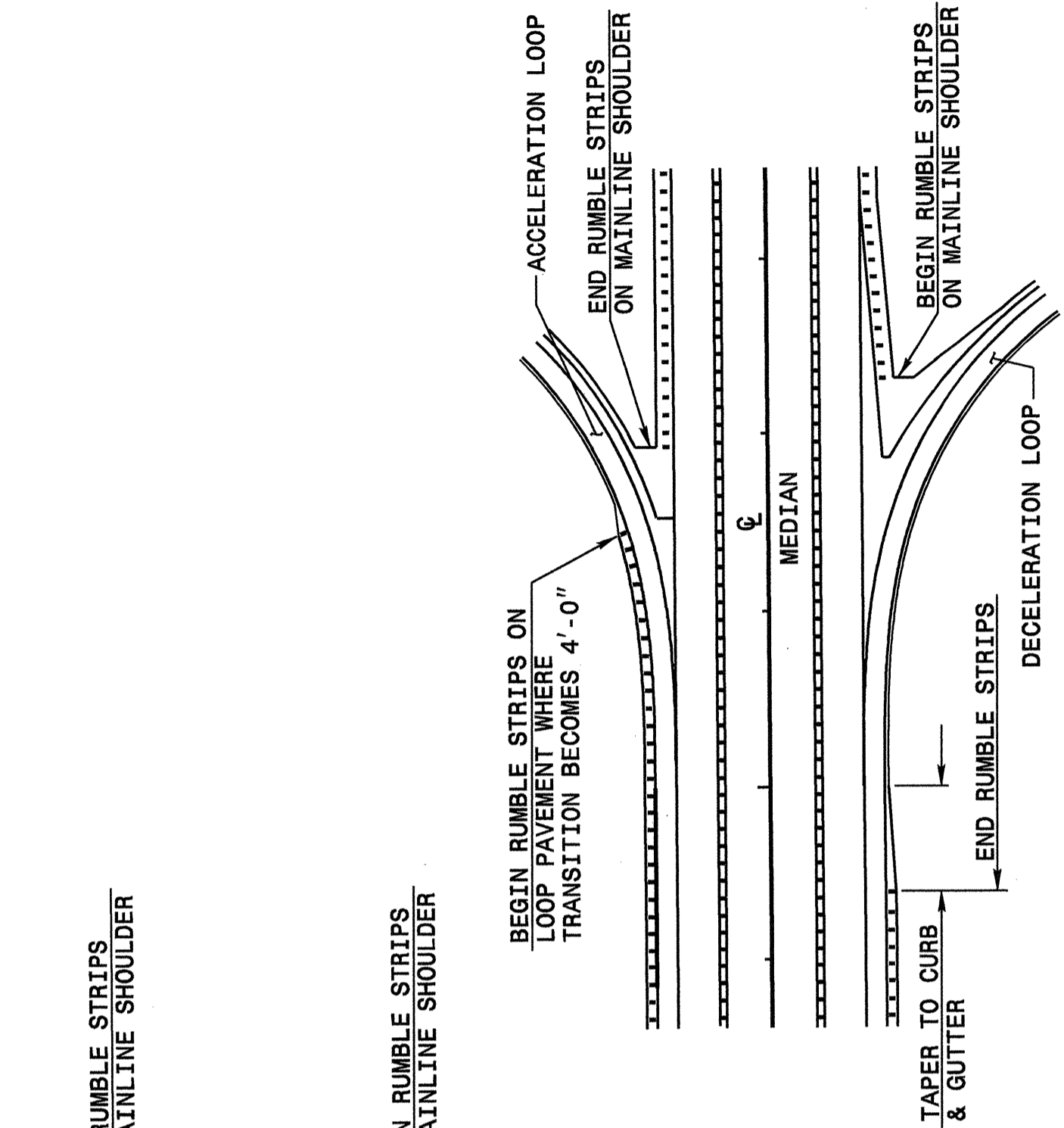
ENGLISH DETAIL DRAWING FOR
**ASPHALT SHOULDERS
MILLED RUMBLE STRIPS**

SHEET 1 OF 2
665D01

STATE OF NORTH CAROLINA
DEPT. OF TRANSPORTATION
DIVISION OF HIGHWAYS
RALEIGH, N.C.

ENGLISH DETAIL DRAWING FOR
**ASPHALT SHOULDERS
MILLED RUMBLE STRIPS**

SHEET 2 OF 2
665D01



* TERMINATE AT DRIVEWAYS AS DIRECTED BY THE ENGINEER.

STATE OF NORTH CAROLINA
DEPT. OF TRANSPORTATION
DIVISION OF HIGHWAYS
RALEIGH, N.C.

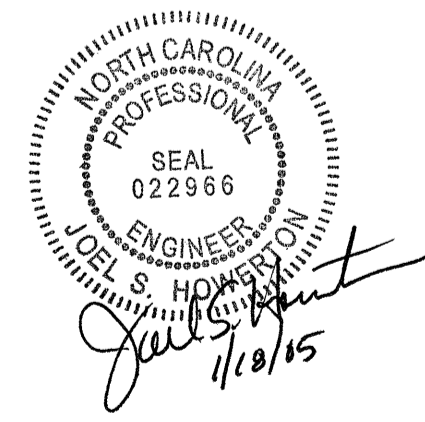
ENGLISH DETAIL DRAWING FOR
**ASPHALT SHOULDERS
MILLED RUMBLE STRIPS**

SHEET 2 OF 2
665D01

PROJECT SERVICES UNIT
STANDARDS AND SPECIAL DESIGN
Office 919-250-4128 FAX 919-250-4119

SEE PLATE FOR TITLE

ORIGINAL BY: 2002 STANDARDS DATE: 01-15-02
 MODIFIED BY: E.E. WARD DATE: 09-16-04
 CHECKED BY: [Signature] DATE: 11/12/04
 FILE SPEC.: sds/02stdstodetails/english/665d01.dgn



28-OCT-2004 13:40 C:\special Design\stds\02\stds\english\665d01\0665d01.dgn