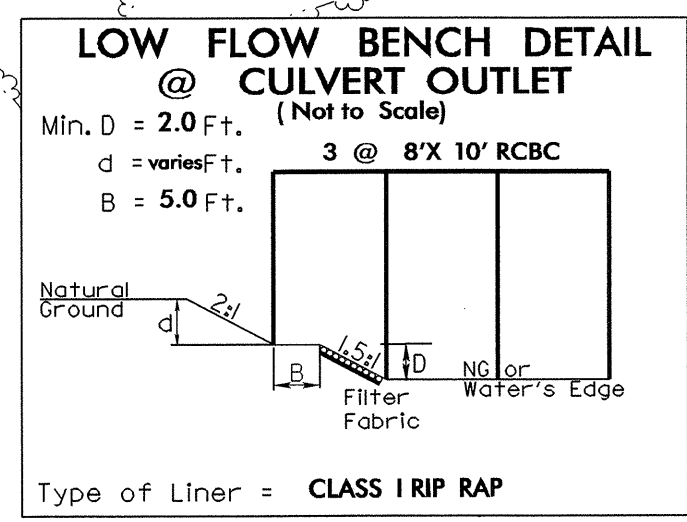
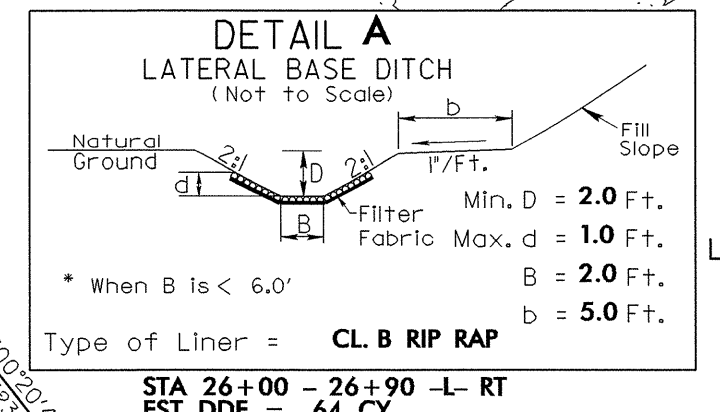
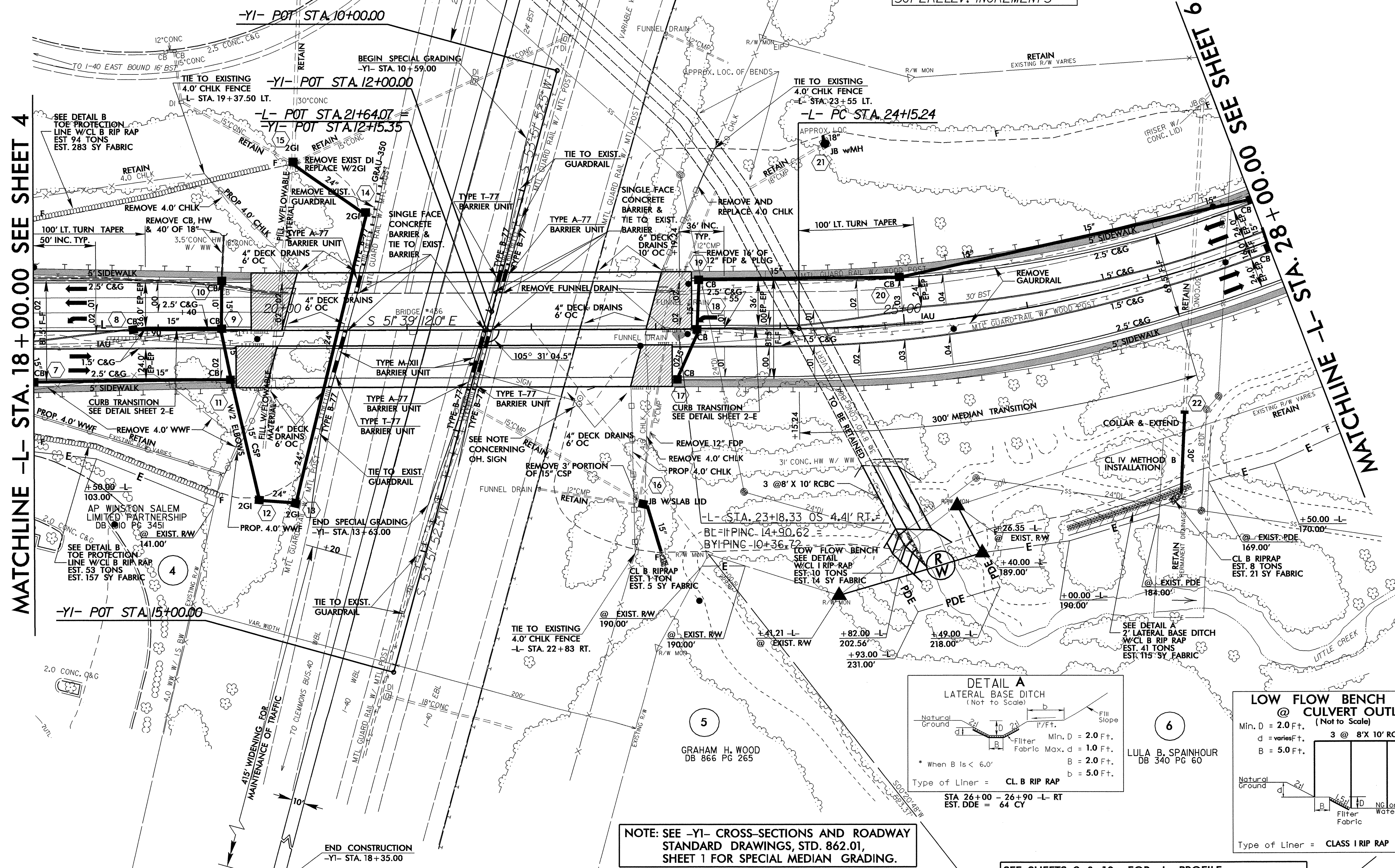


-L-
 PI Sta 26+84.36
 $\Delta = 28' 14'' 07.6'' (LT)$
 $D = 5' 21'' 17.1''$
 $L = 527.30'$
 $T = 269.12'$
 $R = 1,070.00'$
 $SE = 0.04 \text{ \%/}$
 RUNOFF = SEE PLANS FOR SUPERELEV. INCREMENTS



NOTE: SEE -Y1- CROSS-SECTIONS AND ROADWAY STANDARD DRAWINGS, STD. 862.01, SHEET 1 FOR SPECIAL MEDIAN GRADING.

SEE SHEETS 9 & 10 FOR -L- PROFILE
 SEE SHEETS S-1 THRU S-78 FOR STRUCTURE PLANS
 SEE SHEETS C-1 THRU C-6 FOR CULVERT PLANS

SEE SHEETS TCP-1 THRU TCP-20 FOR TRAFFIC CONTROL PLANS

NOTE: -Y1- STA. 12+50 OVERHEAD SIGN TO BE REMOVED AND REPLACED. SEE SIGNING PLANS

REVISIONS

8/17/99
 07-JAN-2005 14:38
 R:\Proj\U3837\05\DWGardner - AT