

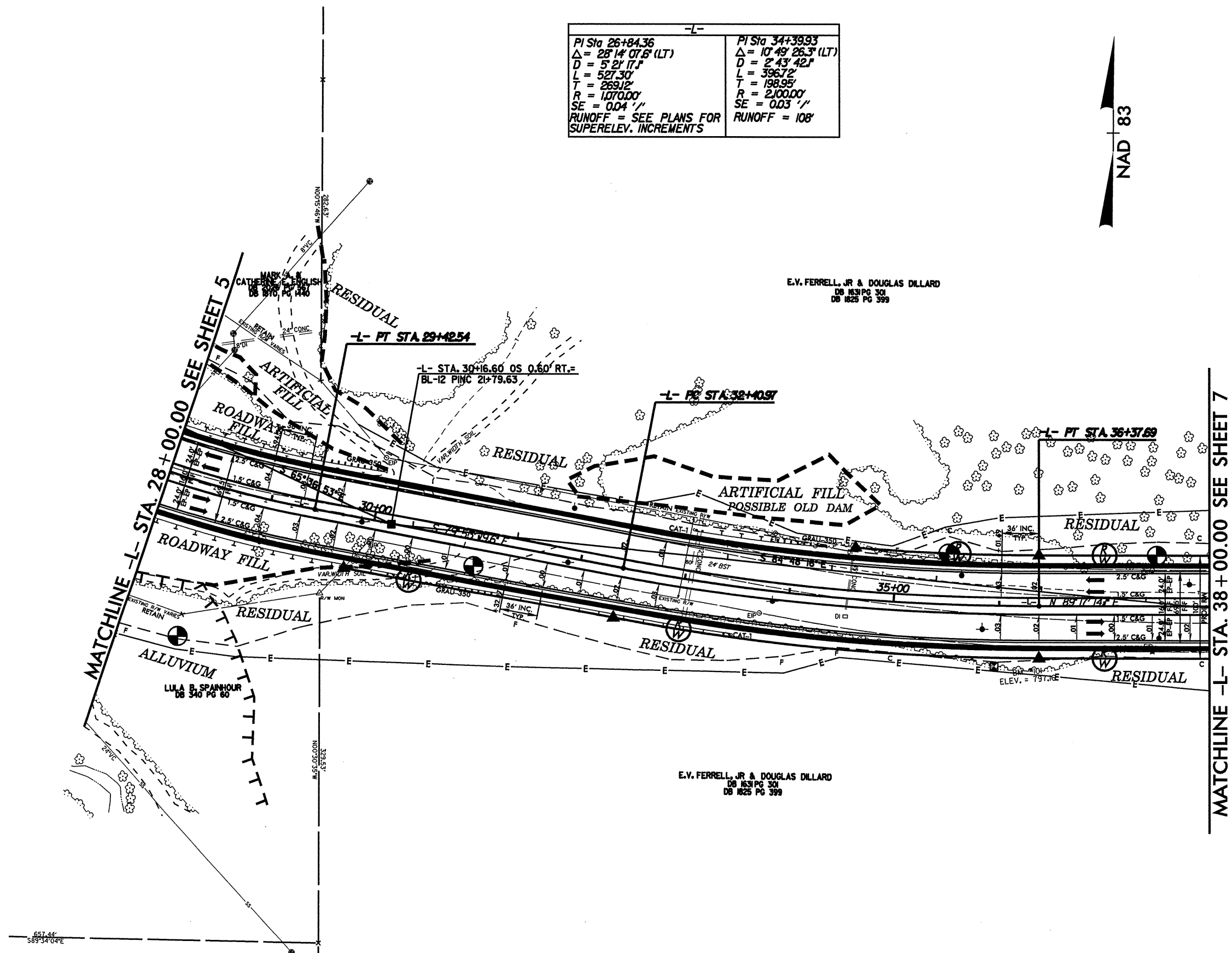
PROJECT REFERENCE NO. <b>U-3837</b>	SHEET NO. <b>6</b>
R/W SHEET NO.	
ROADWAY DESIGN ENGINEER	HYDRAULICS ENGINEER
<b>INCOMPLETE PLANS</b> DO NOT USE FOR R/W ACQUISITION <b>PRELIMINARY PLANS</b> DO NOT USE FOR CONSTRUCTION	

-L-	
PI Sta 26+84.36 $\Delta = 28' 14" 07.6" (LT)$ $D = 5' 21" 17.1"$ $L = 527.30'$ $T = 269.12'$ $R = 1070.00'$ $SE = 0.04'/'$ RUNOFF = SEE PLANS FOR SUPERELEV. INCREMENTS	PI Sta 34+39.93 $\Delta = 10' 49" 26.3" (LT)$ $D = 2' 43" 42.1"$ $L = 396.72'$ $T = 198.95'$ $R = 2100.00'$ $SE = 0.03'/'$ RUNOFF = 108'



E.V. FERRELL, JR & DOUGLAS DILLARD  
DB 1531 PG 301  
DB 1825 PG 399

E.V. FERRELL, JR & DOUGLAS DILLARD  
DB 1531 PG 301  
DB 1825 PG 399



MATCHLINE -L- STA. 28+00.00 SEE SHEET 5  
 ROADWAY FILL  
 RESIDUAL  
 ALLUVIUM  
 LULA B. SPANHOUR  
 DB 340 PG 80

MATCHLINE -L- STA. 38+00.00 SEE SHEET 7  
 RESIDUAL

REVISIONS

8/17/99

1. 08/17/99  
 2. 08/17/99  
 3. 08/17/99  
 4. 08/17/99  
 5. 08/17/99  
 6. 08/17/99  
 7. 08/17/99  
 8. 08/17/99  
 9. 08/17/99  
 10. 08/17/99  
 11. 08/17/99  
 12. 08/17/99  
 13. 08/17/99  
 14. 08/17/99  
 15. 08/17/99  
 16. 08/17/99  
 17. 08/17/99  
 18. 08/17/99  
 19. 08/17/99  
 20. 08/17/99  
 21. 08/17/99  
 22. 08/17/99  
 23. 08/17/99  
 24. 08/17/99  
 25. 08/17/99  
 26. 08/17/99  
 27. 08/17/99  
 28. 08/17/99  
 29. 08/17/99  
 30. 08/17/99  
 31. 08/17/99  
 32. 08/17/99  
 33. 08/17/99  
 34. 08/17/99  
 35. 08/17/99  
 36. 08/17/99  
 37. 08/17/99  
 38. 08/17/99  
 39. 08/17/99  
 40. 08/17/99  
 41. 08/17/99  
 42. 08/17/99  
 43. 08/17/99  
 44. 08/17/99  
 45. 08/17/99  
 46. 08/17/99  
 47. 08/17/99  
 48. 08/17/99  
 49. 08/17/99  
 50. 08/17/99  
 51. 08/17/99  
 52. 08/17/99  
 53. 08/17/99  
 54. 08/17/99  
 55. 08/17/99  
 56. 08/17/99  
 57. 08/17/99  
 58. 08/17/99  
 59. 08/17/99  
 60. 08/17/99  
 61. 08/17/99  
 62. 08/17/99  
 63. 08/17/99  
 64. 08/17/99  
 65. 08/17/99  
 66. 08/17/99  
 67. 08/17/99  
 68. 08/17/99  
 69. 08/17/99  
 70. 08/17/99  
 71. 08/17/99  
 72. 08/17/99  
 73. 08/17/99  
 74. 08/17/99  
 75. 08/17/99  
 76. 08/17/99  
 77. 08/17/99  
 78. 08/17/99  
 79. 08/17/99  
 80. 08/17/99  
 81. 08/17/99  
 82. 08/17/99  
 83. 08/17/99  
 84. 08/17/99  
 85. 08/17/99  
 86. 08/17/99  
 87. 08/17/99  
 88. 08/17/99  
 89. 08/17/99  
 90. 08/17/99  
 91. 08/17/99  
 92. 08/17/99  
 93. 08/17/99  
 94. 08/17/99  
 95. 08/17/99  
 96. 08/17/99  
 97. 08/17/99  
 98. 08/17/99  
 99. 08/17/99  
 100. 08/17/99

SEE SHEETS 10 & 11 FOR -L- PROFILE