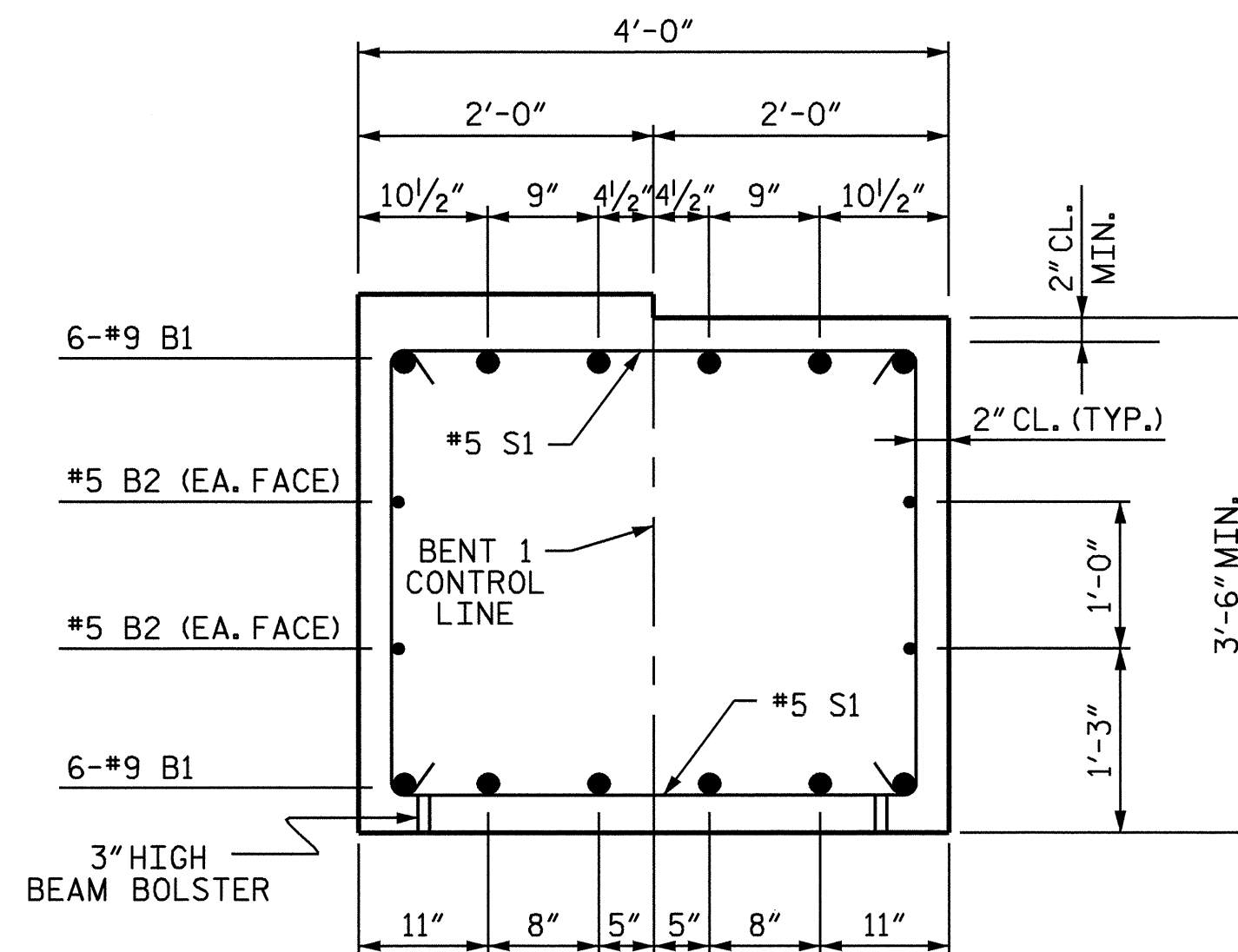
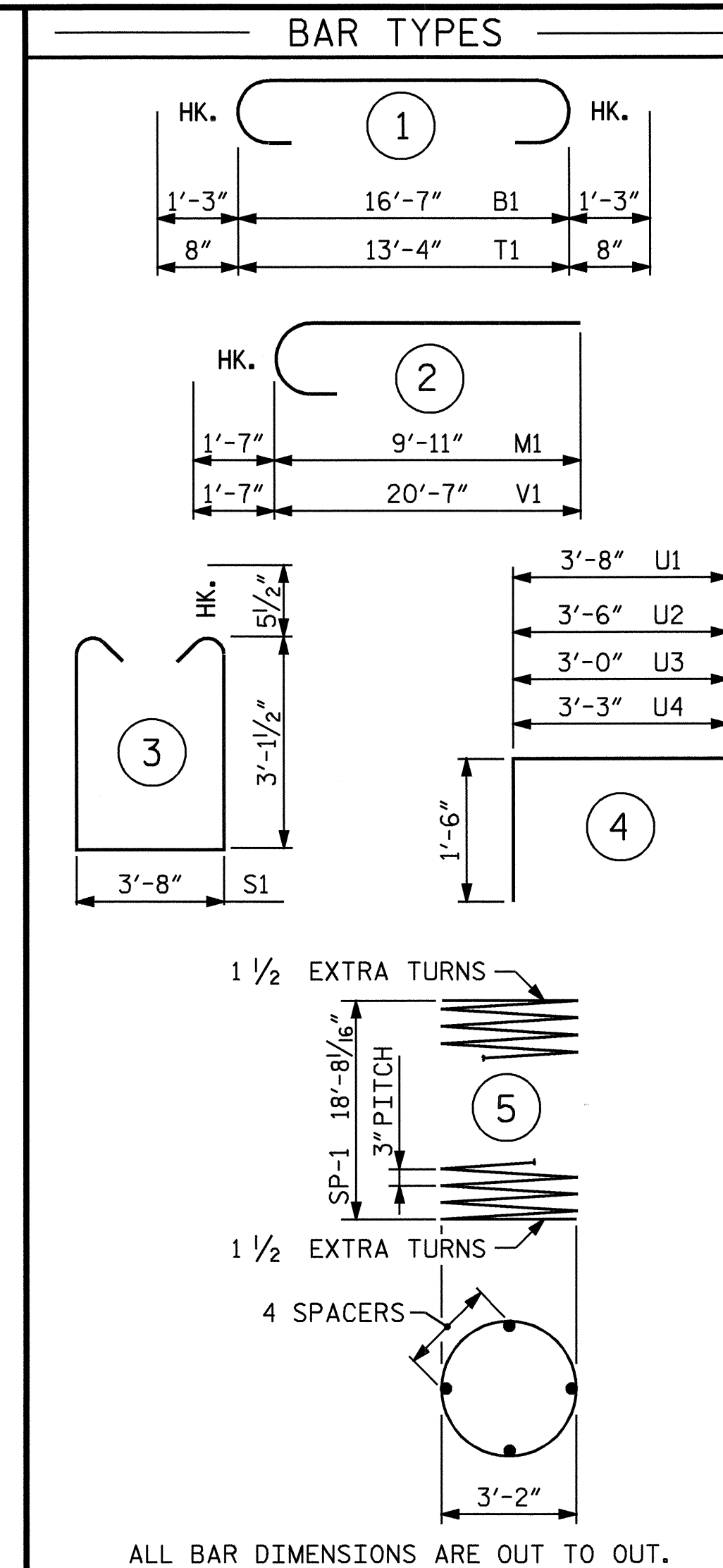


VIEW X-X

VIEW Y-Y

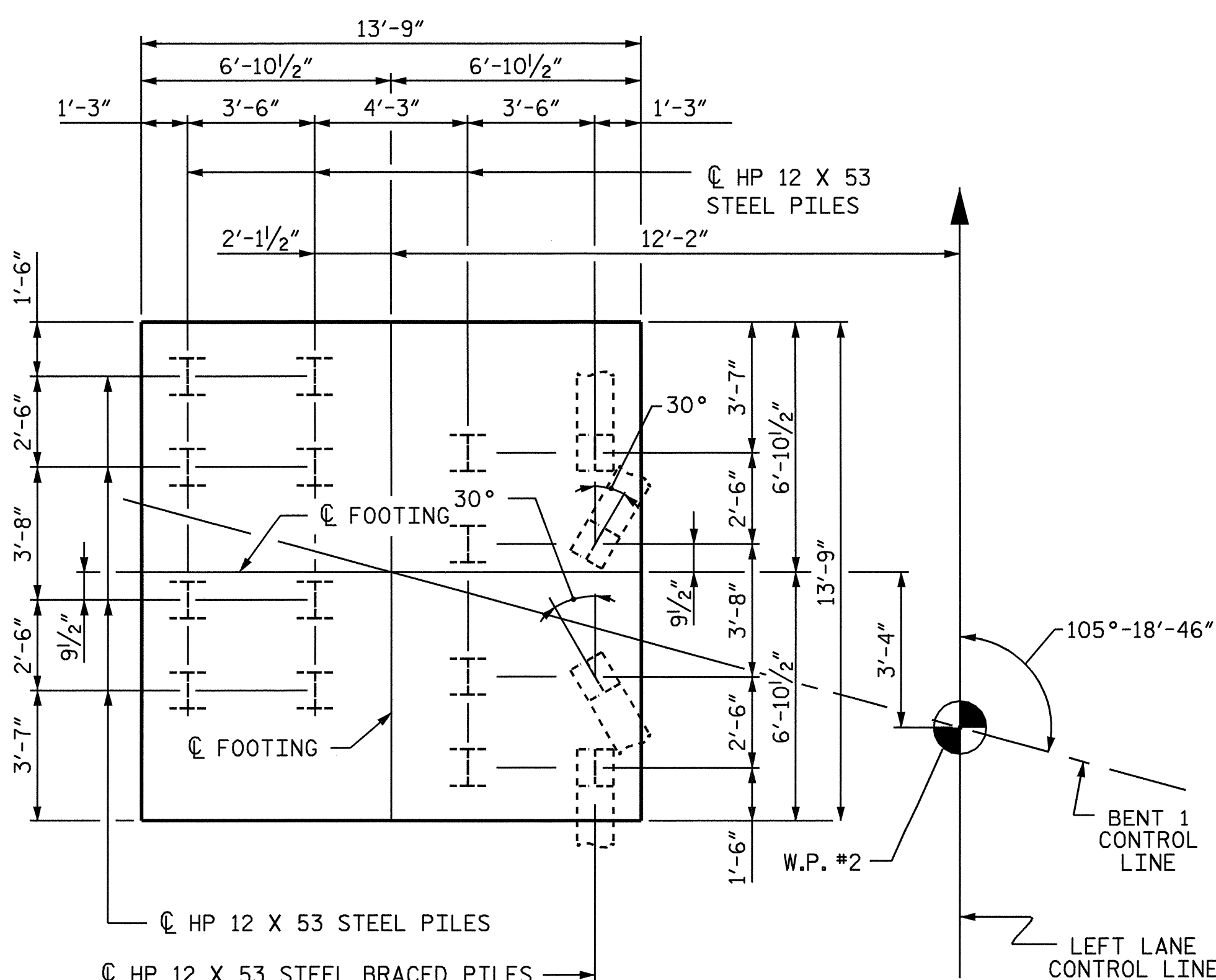


SECTION A-A

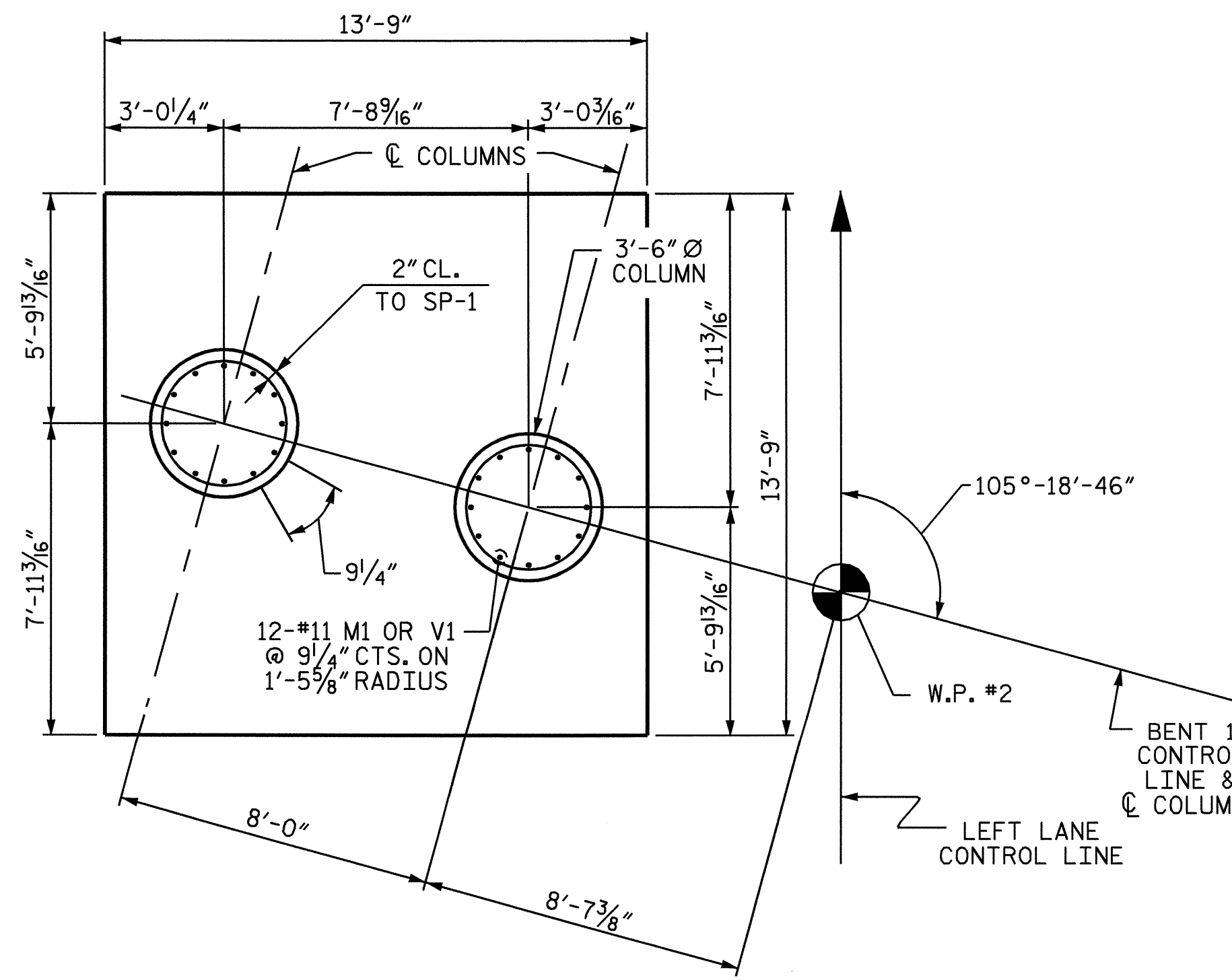


BILL OF MATERIAL					
BENT 1					
BAR	NO.	SIZE	TYPE	LENGTH	WEIGHT
B1	12	#9	1	19'-1"	779
B2	4	#5	STR	16'-8"	70
B3	6	#4	STR	9'-9"	39
M1	24	#11	2	11'-6"	1466
S1	20	#5	3	10'-10"	226
T1	65	#6	1	14'-8"	1432
U1	19	#4	4	6'-8"	85
U2	8	#4	4	6'-6"	34
U3	4	#4	4	6'-0"	16
U4	4	#4	4	6'-3"	17
V1	24	#11	2	22'-2"	2827
REINFORCING STEEL					= 6991 LBS
SP-1	2	**	5	766'-1"	1023
SPIRAL REINFORCING STEEL					= 1023 LBS
CLASS A CONCRETE					
POUR #1 (FOOTING)					24.5
POUR #2 (COLUMNS)					13.1
POUR #3 (CAP)					9.3
TOTAL					C.Y. 46.9
HP 12 X 53 STEEL PILES					
NO.	16			FEET	960
FOUNDATION EXCAVATION					LUMP SUM

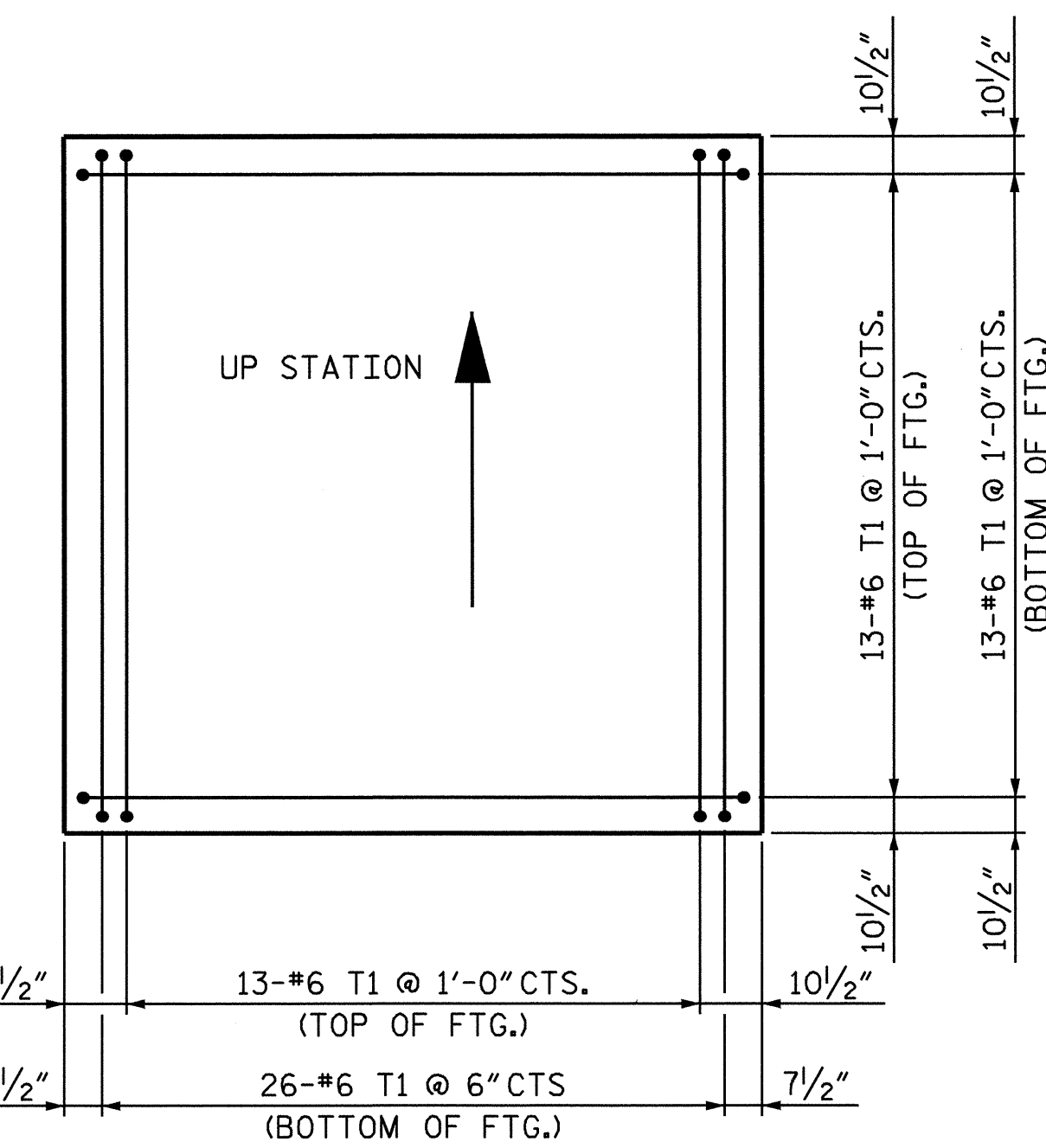
SPAN B



SHOWING PILES IN FOOTING

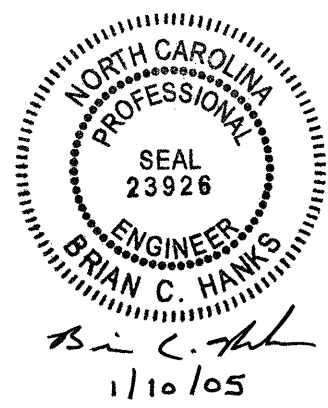


PLAN OF COLUMNS AND FOOTING



SHOWING PLAN OF FOOTING REINFORCING STEEL

** THE SP-1 SPIRAL REINFORCING STEEL SHALL BE W20 OR D-20 COLD DRAWN WIRE OR #4 PLAIN OR DEFORMED BAR.



PROJECT NO. U-3837
FORSYTH COUNTY
 STATION: 21+64.07 -L-

SHEET 2 OF 2

STATE OF NORTH CAROLINA
 DEPARTMENT OF TRANSPORTATION
 RALEIGH

SUBSTRUCTURE
 BENT 1

DRAWN BY : D. G. ELY DATE : 06/04/04
 CHECKED BY : W. F. PARKER DATE : 07/14/04

REVISIONS					
NO.	BY:	DATE:	NO.	BY:	DATE:
1			3		
2			4		

SHEET NO.
 S-32
 TOTAL SHEETS
 78