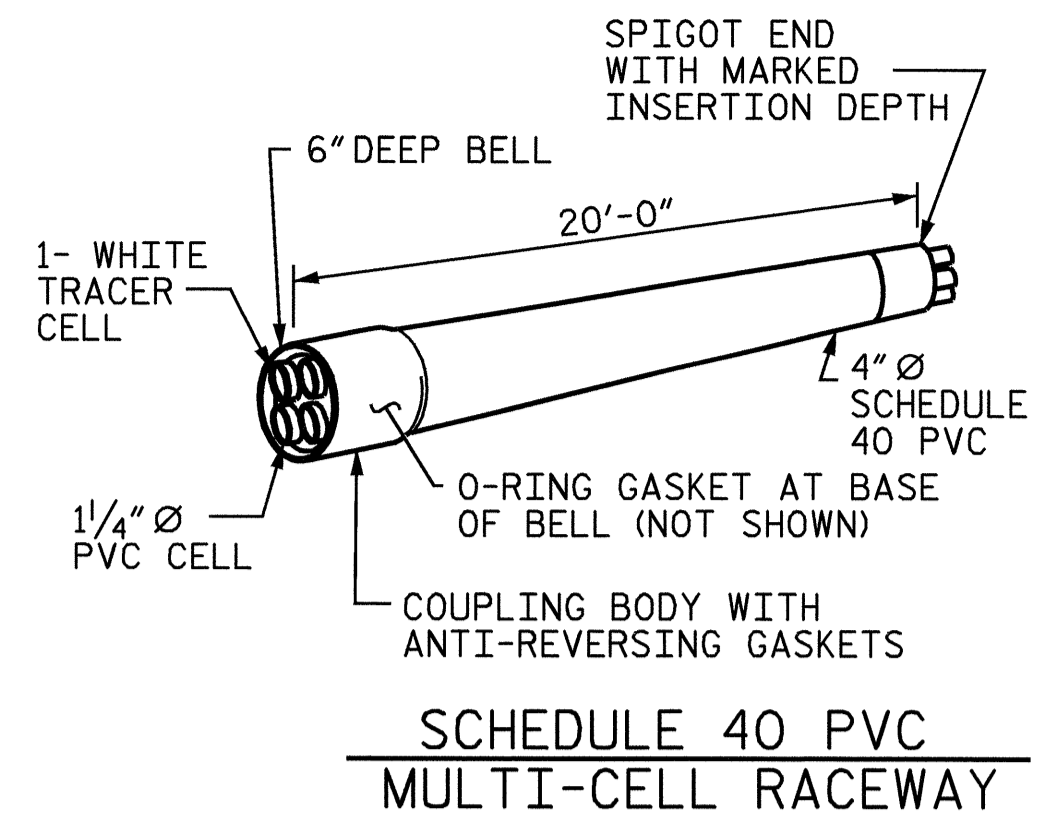
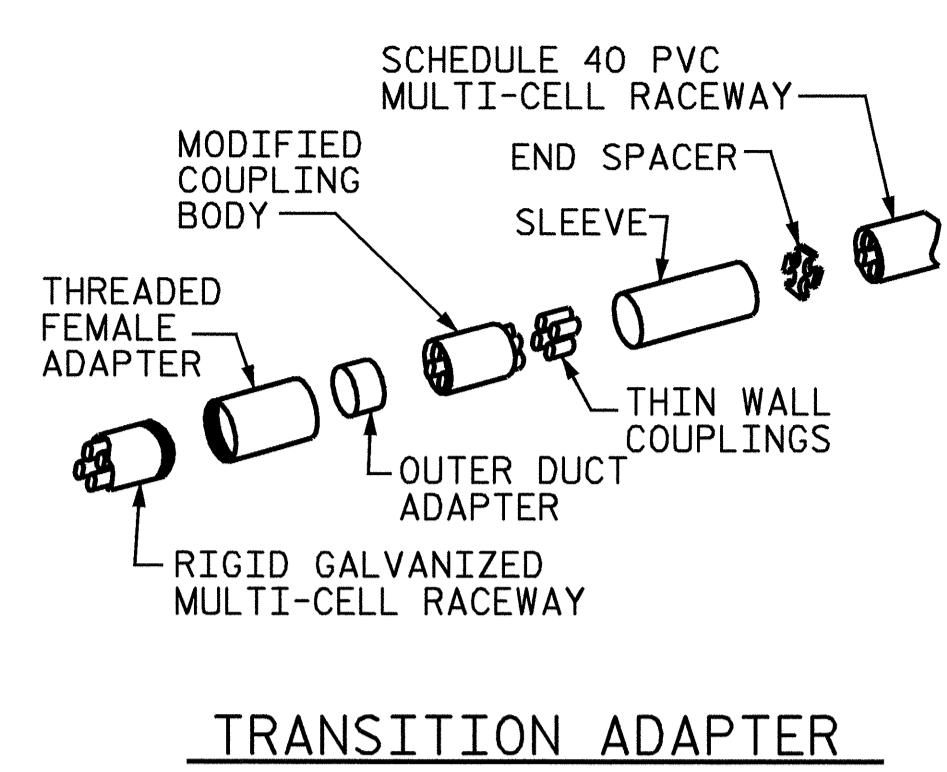


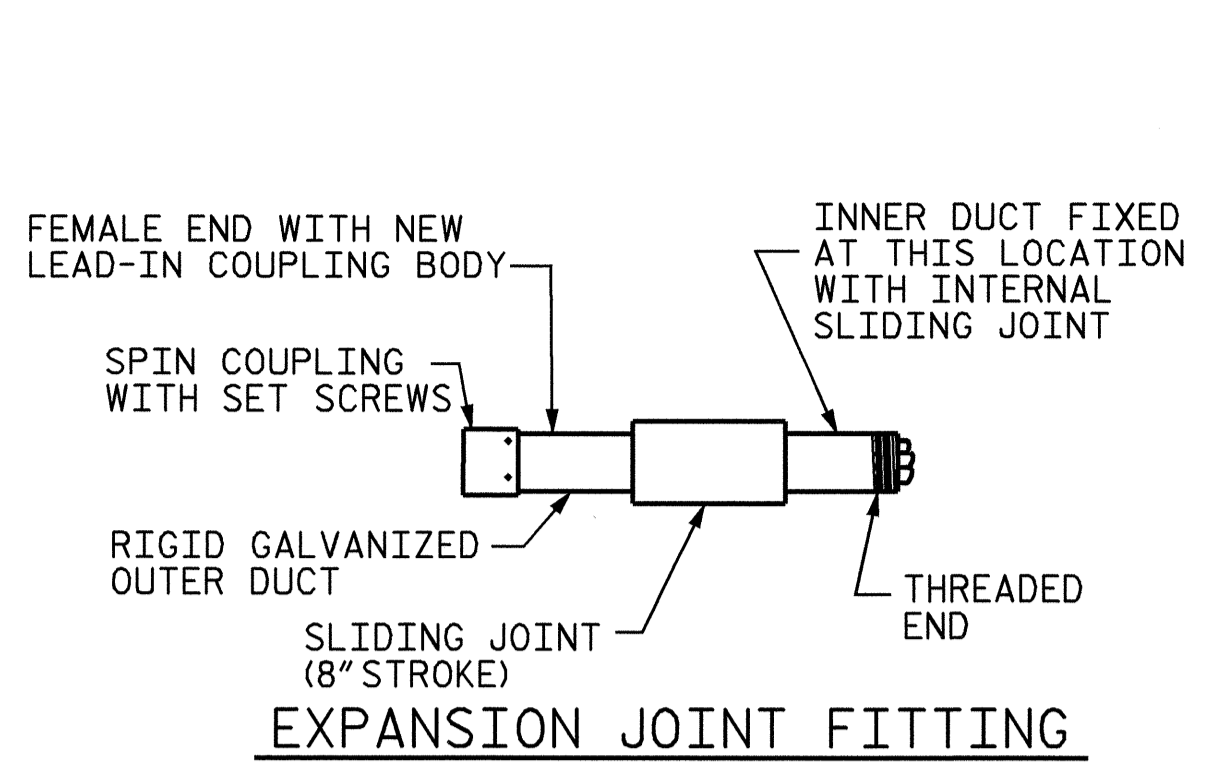
RIGID GALVANIZED (RGC) MULTI-CELL RACEWAY



**SCHEDULE 40 PVC MULTI-CELL RACEWAY
DETAIL "D"
4" MULTI-CELL COMPONENTS**



TRANSITION ADAPTER



EXPANSION JOINT FITTING

NOTES

THE CONTRACTOR SHALL BE RESPONSIBLE FOR DETERMINING THE TOTAL QUANTITY OF CONDUIT NEEDED TO COMPLETE THE WORK AND THAT THE CONDUIT(S) ARE PLACED AT THE NOTED DIMENSION AND ABOVE THE BOTTOM OF THE GIRDER.

THE INSTALLATION OF THE CONDUIT SYSTEM SHALL BE PAID FOR AS LUMP SUM. THE PRICE SHALL INCLUDE ALL CONDUIT, HANGERS, STABILIZERS, EXPANSION JOINTS, CONCRETE INSERTS, PVC SLEEVES AND ALL NECESSARY HARDWARE TO COMPLETE THE WORK.

THE CONTRACTOR SHALL FIELD VERIFY THAT THE CONDUIT SYSTEM IS NOT IN CONFLICT WITH THE GUARDRAIL POSTS.

SEE DETAIL "C" FOR HANGER ASSEMBLY INSTALLATION.

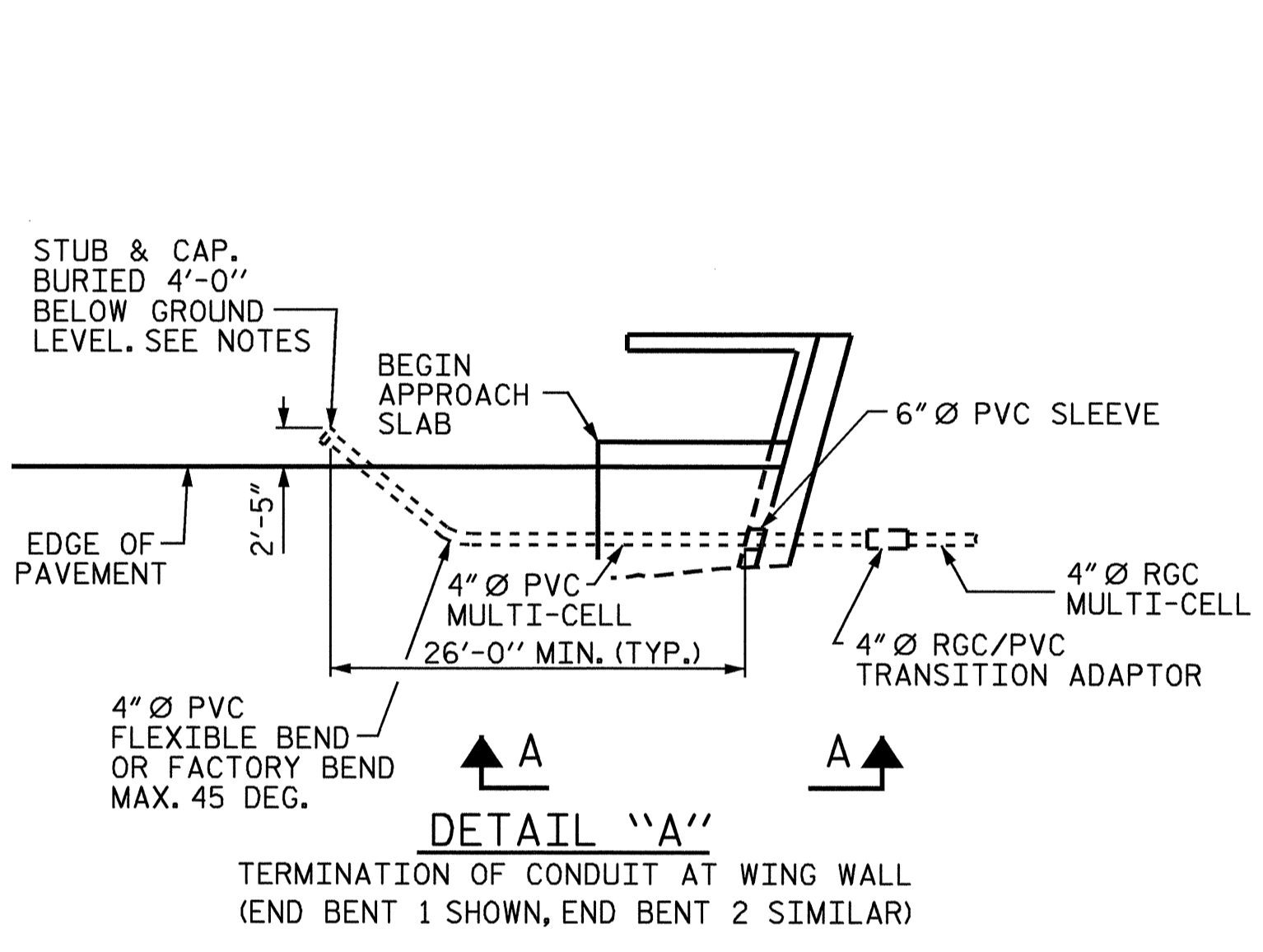
INSTALL SLEEVES PARALLEL TO GIRDERS. SEE DETAIL "B" FOR SLEEVE INSTALLATION.

PROVIDE TRANSITION ADAPTOR FOR CONDUIT AT END BENT 1 AND END BENT 2.

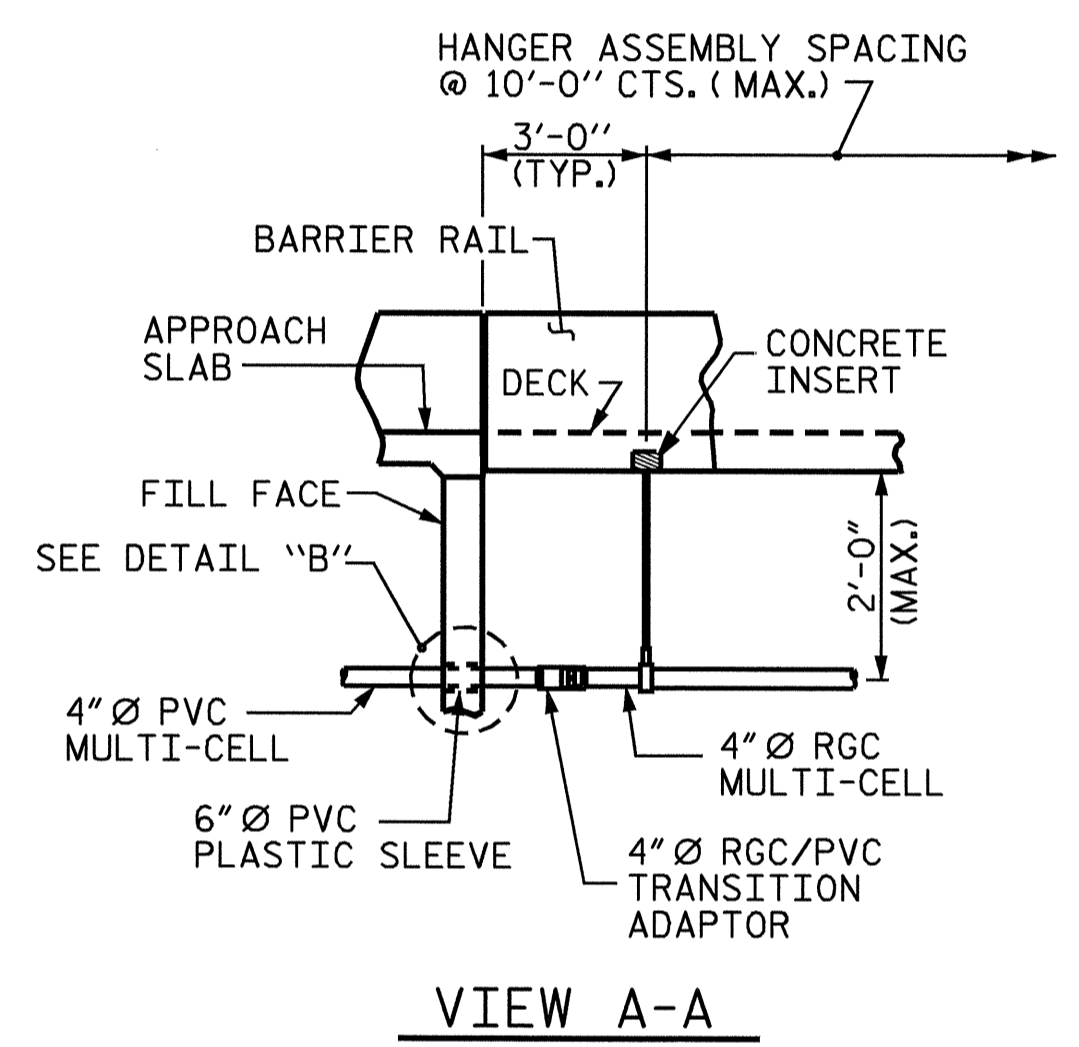
INSTALL STABILIZERS MIDWAY BETWEEN DECK EXPANSION JOINTS. STABILIZER MAY NOT BE USED INSTEAD OF A HANGER ASSEMBLY.

INSTALL EXPANSION JOINTS AT BENT 1, BENT 2, AND BENT 3.

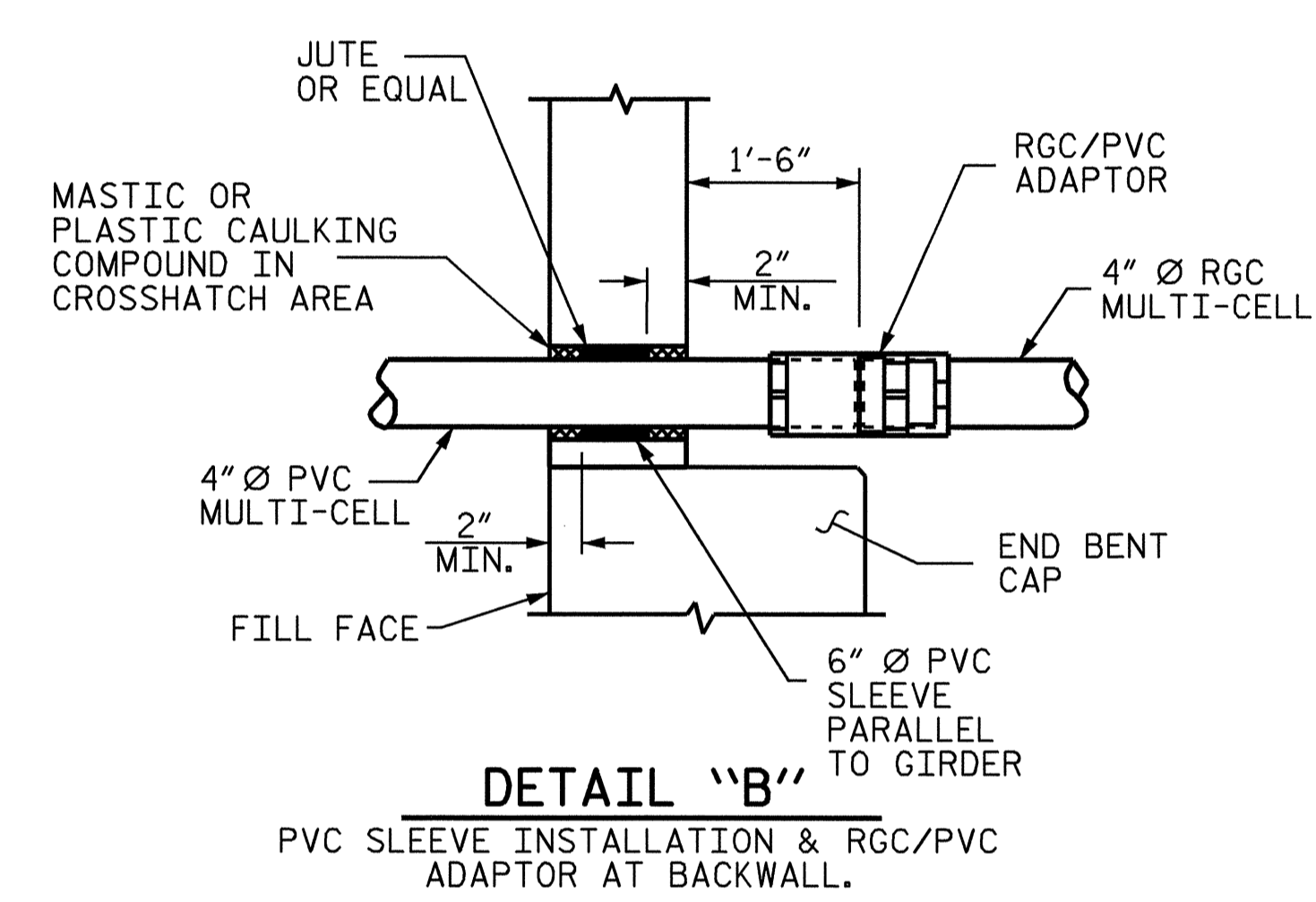
THE CONCRETE SCREW INSERT SHALL HAVE A ROD SIZE OF 5/8" AND A PULL FORCE OF 1260 lbs.



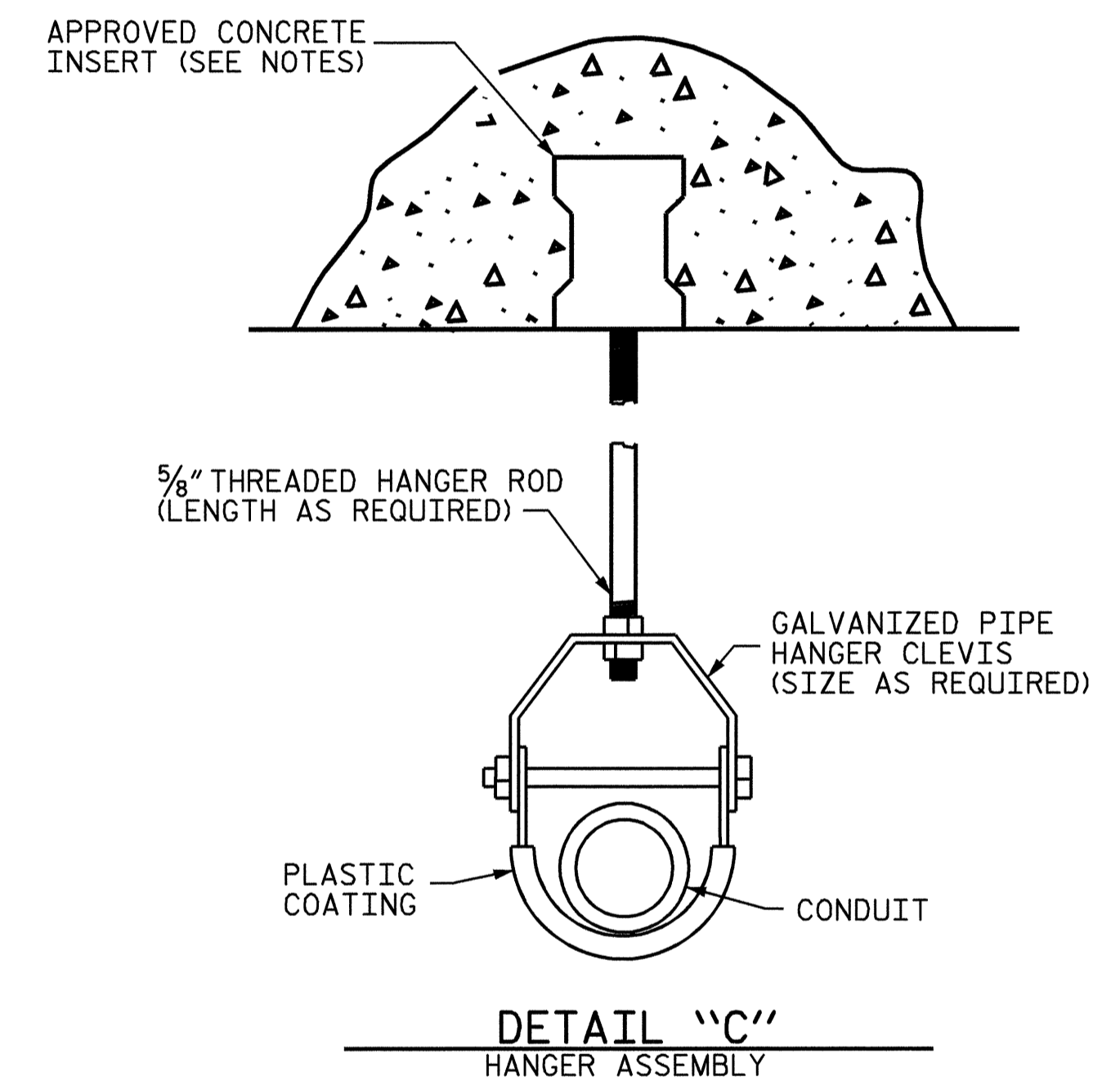
**DETAIL "A"
TERMINATION OF CONDUIT AT WING WALL
(END BENT 1 SHOWN, END BENT 2 SIMILAR)**



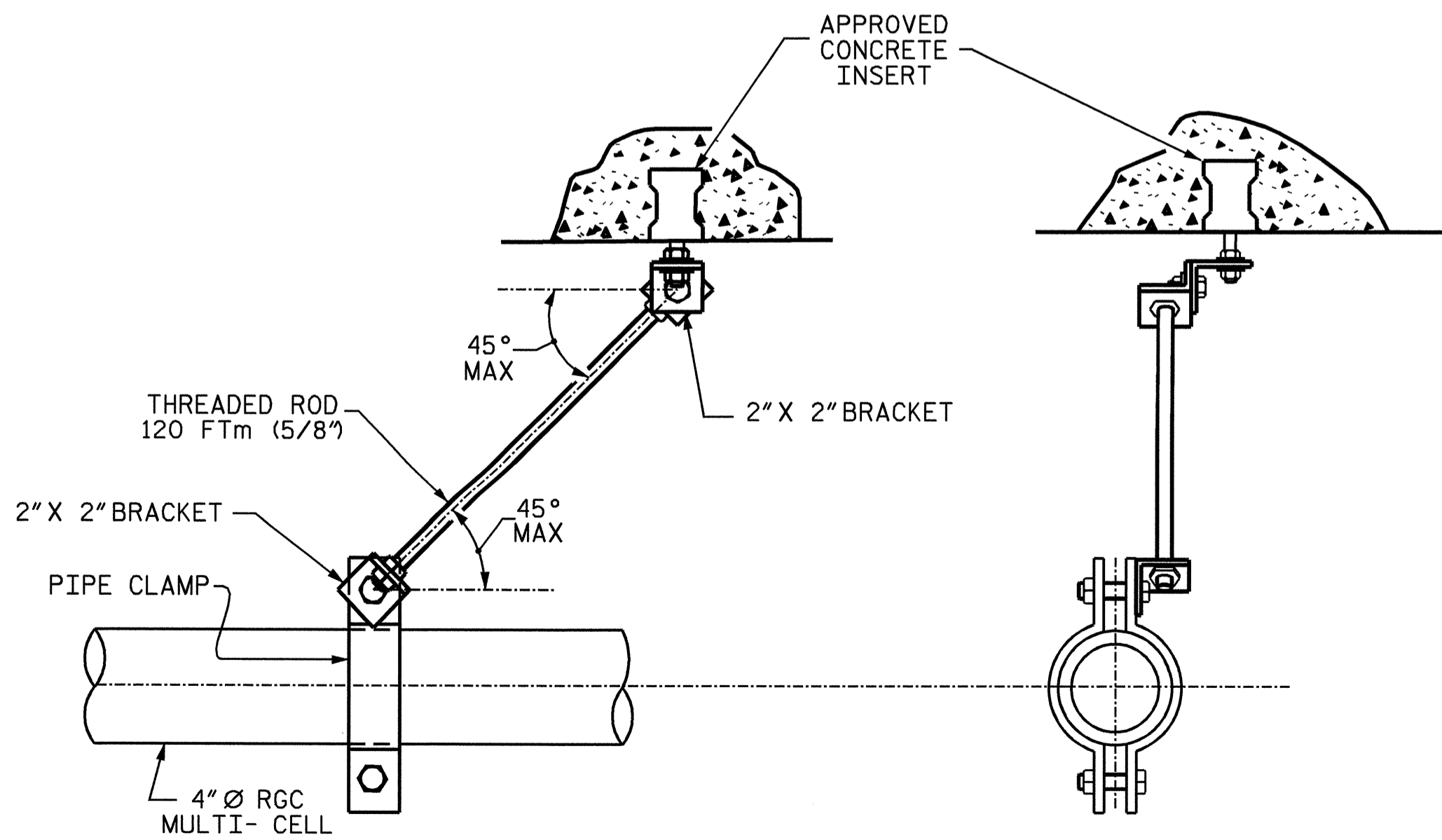
VIEW A-A



**DETAIL "B"
PVC SLEEVE INSTALLATION & RGC/PVC ADAPTOR AT BACKWALL.**



**DETAIL "C"
HANGER ASSEMBLY**

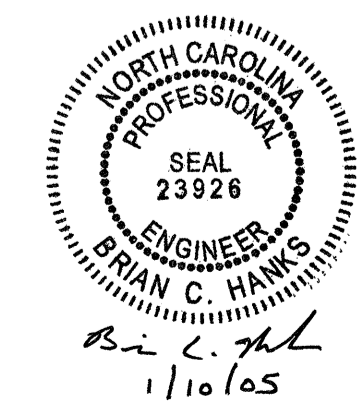


**DETAIL "E"
STABILIZER**

PROJECT NO. U-3837
FORSYTH COUNTY
 STATION: 21+64.07 -L-

SHEET 2 OF 2

STATE OF NORTH CAROLINA DEPARTMENT OF TRANSPORTATION RALEIGH					
STANDARD ELECTRICAL CONDUIT SYSTEM DETAILS					
REVISIONS					
NO.	BY:	DATE:	NO.	BY:	DATE:
1			3		
2			4		
					SHEET NO. S-40 TOTAL SHEETS 78



ASSEMBLED BY : B. C. HANKS DATE : 11/18/04
 CHECKED BY : K. W. ALFORD DATE : 11/19/04
 DRAWN BY : RWW 2-4-03
 CHECKED BY : DBM 2-4-03