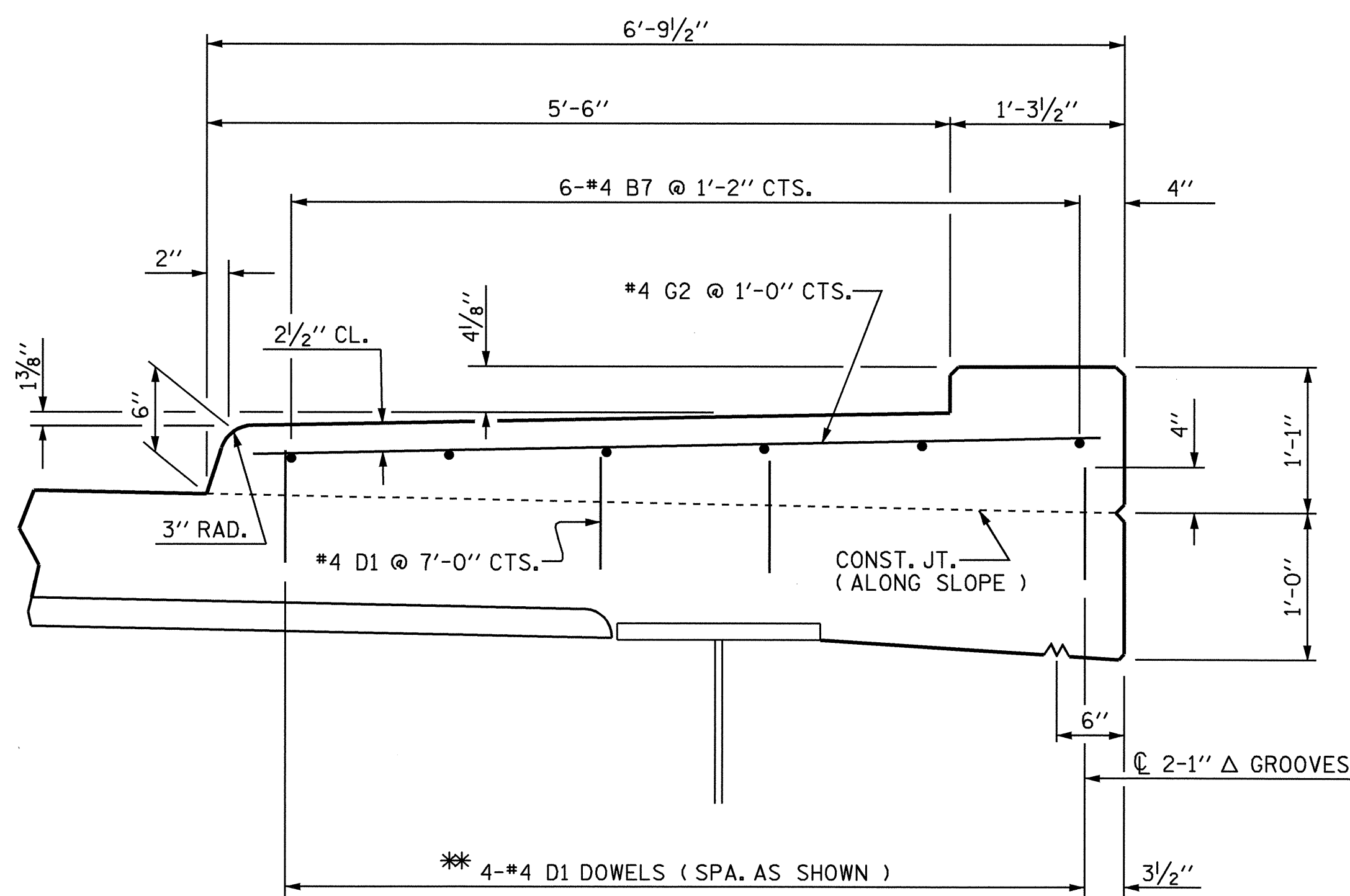
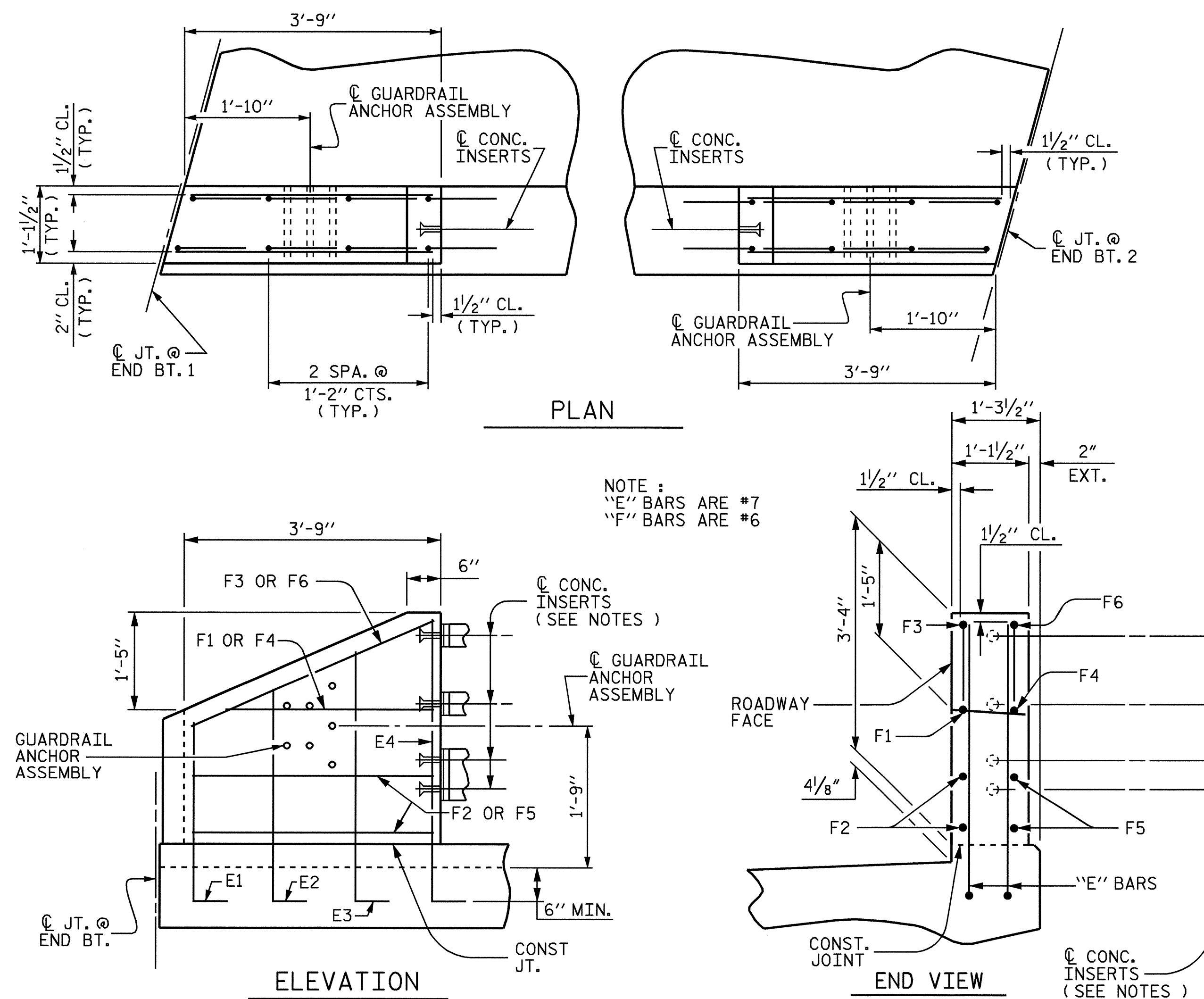


PLAN OF SIDEWALK



SECTION THRU SIDEWALK

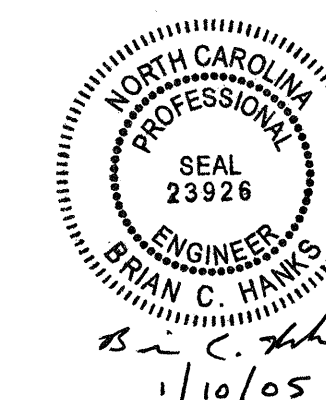
* DOWELS MAY BE PUSHED INTO GREEN CONCRETE AFTER SPAN HAS BEEN SCREEDED OFF.



END POST DETAILS

NOTES

- THE SIDEWALK IN A CONTINUOUS UNIT SHALL NOT BE CAST UNTIL ALL SLAB CONCRETE IN THE UNIT HAS BEEN CAST AND HAS REACHED A MINIMUM COMPRESSIVE STRENGTH OF 3,000 PSI.
- THE JOINT IN THE DECK SHALL BE SAWED PRIOR TO THE CASTING OF THE SIDEWALK.
- FOR SIDEWALK AND END POST QUANTITIES, SEE "SUPERSTRUCTURE - BILL OF MATERIAL" SHEET.
- ALL REINFORCING STEEL IN SIDEWALK AND END POSTS SHALL BE EPOXY COATED.
- FOR SIDEWALK COVER PLATE DETAILS, SEE "BRIDGE APPROACH SLAB DETAILS" SHEETS.
- FOR CONCRETE INSERT DETAILS, SEE "3 BAR METAL RAIL", SHEET 3 OF 3.
- THE #4 D1 DOWELS MAY BE PUSHED INTO GREEN CONCRETE AFTER THE SPAN HAS BEEN SCREEDED OFF, EXCEPT AS NOTED.
- THESE DOWELS ARE TO BE PLACED AFTER SAWING OF THE JOINT. THE HOLES SHALL BE DRILLED AND THE DOWELS GROUTED IN PLACE.
- GROOVED CONTRACTION JOINTS, 1/2" IN DEPTH, SHALL BE TOOLED IN ALL EXPOSED FACES OF THE SIDEWALK IN ACCORDANCE WITH ARTICLE 825-10(B) OF THE STANDARD SPECIFICATIONS. THE CONTRACTION JOINTS SHALL BE LOCATED AT A SPACING OF 8 FT. TO 10 FT. BETWEEN EXPANSION JOINTS. NO CONTRACTION JOINT WILL BE REQUIRED FOR SEGMENTS LESS THAN 10 FEET IN LENGTH.



PROJECT NO. U-3837
 FORSYTH COUNTY
 STATION: 21+64.07 -L-

STATE OF NORTH CAROLINA
 DEPARTMENT OF TRANSPORTATION
 RALEIGH

SUPERSTRUCTURE
 SIDEWALK DETAILS
 (RIGHT LANE)

DRAWN BY: MIKE BRITT DATE: 12-5-03
 CHECKED BY: William J. Parker DATE: 05/26/04

07-JAN-2005 15:56
 W:\equadg\TURNED\U3837\FINAL\STR2\U3837_ed_sw_02.dgn
 Kdford

REVISIONS						SHEET NO.	
NO.	BY:	DATE:	NO.	BY:	DATE:	S-61	
1			3			TOTAL	78
2			4			SHEETS	78