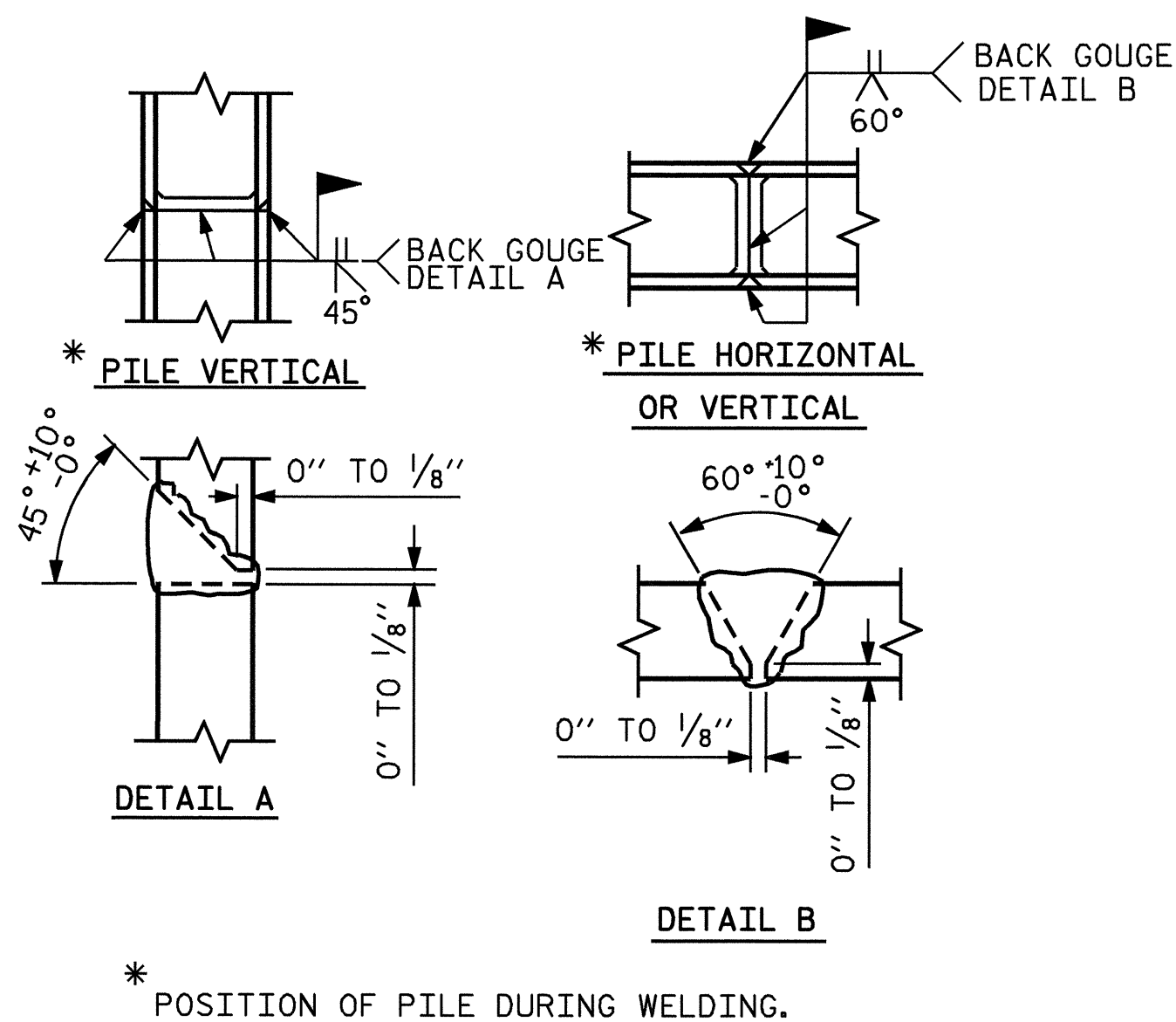
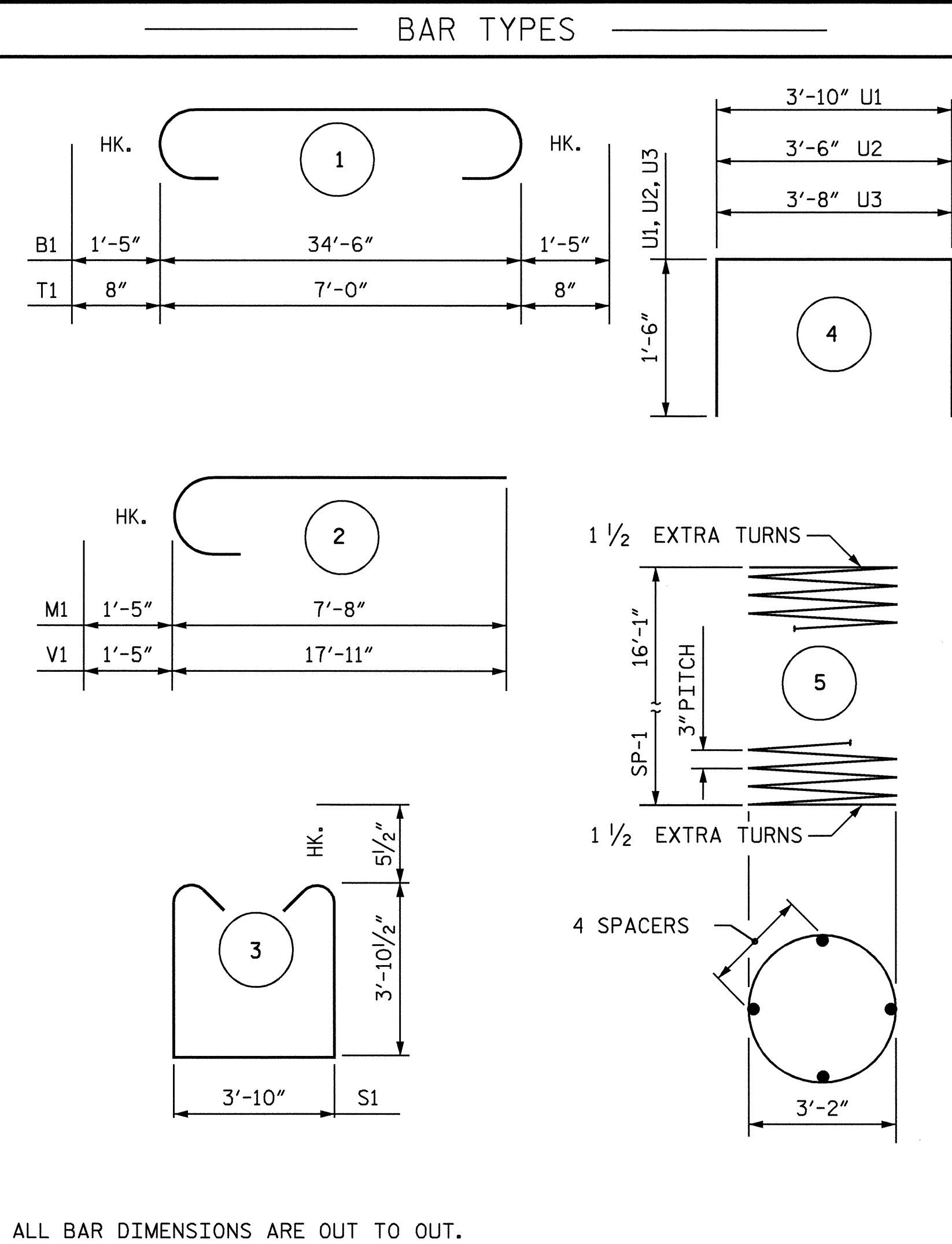


SECTION A-A



PILE SPLICE DETAILS



ALL BAR DIMENSIONS ARE OUT TO OUT.

BILL OF MATERIAL

BENT #1

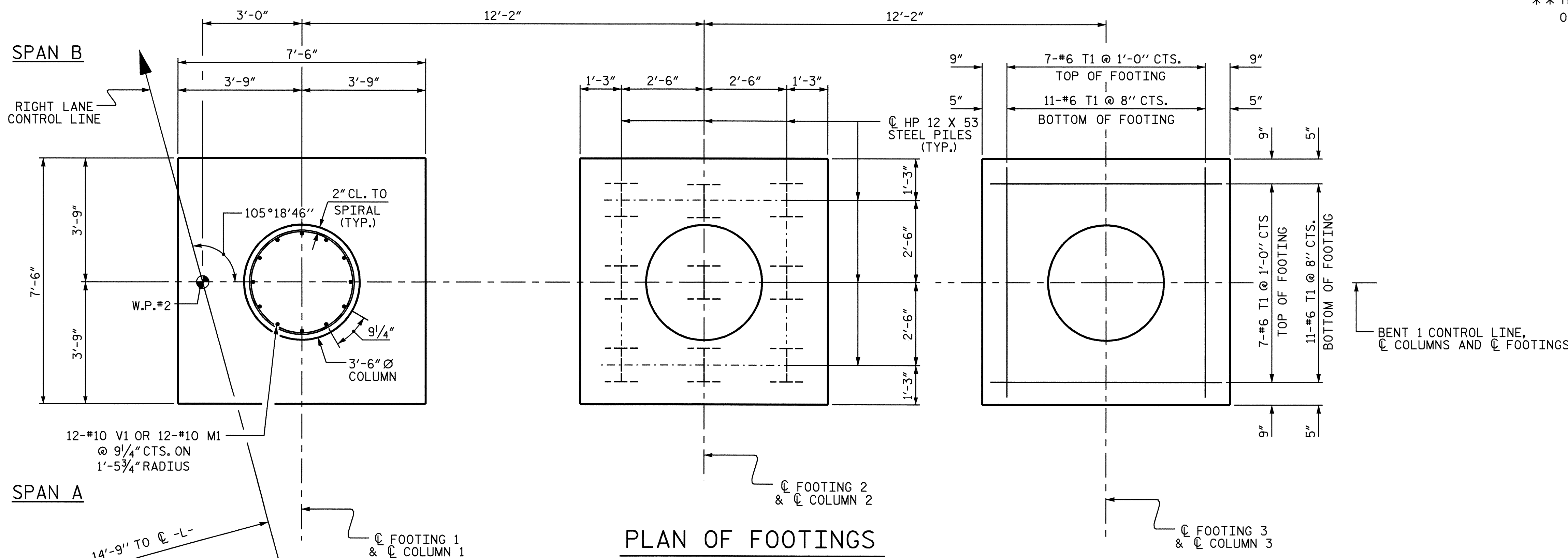
BAR	NO.	SIZE	TYPE	LENGTH	WEIGHT
B1	6	10		37'-4"	964
B2	6	10	STR.	34'-6"	891
B3	6	5	STR.	34'-6"	216
B4	6	4	STR.	10'-7"	42
M1	36	10	2	9'-1"	1407
S1	52	5	3	12'-6"	678
T1	108	6	1	8'-4"	1352
U1	28	4	4	6'-10"	128
U2	6	4	4	6'-6"	26
U3	6	4	4	6'-8"	27
V1	36	10	2	19'-4"	2995
REINFORCING STEEL				LBS	8726

SP-1	3	**	5	660'-2"	1323
SPIRAL COLUMN REINFORCING STEEL				LBS.	1323

CLASS A CONCRETE					
POUR #1 (FOOTINGS)		C.Y.		17.2	
POUR #2 (COLUMNS)		C.Y.		17.0	
POUR #3 (CAP)		C.Y.		24.0	
TOTAL				C.Y.	58.2

HP 12 X 53 STEEL PILES		LIN. FEET =	1485
NO. = 27			
FOUNDATION EXCAVATION		LUMP SUM	

** THE SP-1 SPIRAL REINFORCING STEEL SHALL BE W20 OR D-20 COLD DRAWN WIRE OR #4 PLAIN OR DEFORMED BAR.

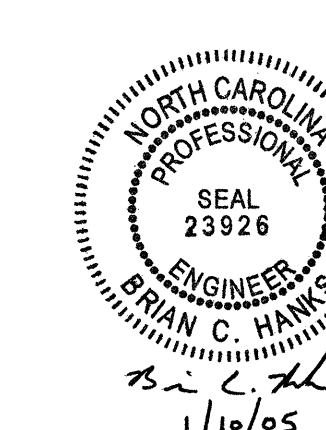


PLAN OF FOOTINGS

DIMENSIONS, REINFORCING STEEL AND PILES LOCATIONS ARE TYPICAL FOR ALL FOOTINGS

DRAWN BY : K. K. PUROHIT DATE : 03/29/04
 CHECKED BY : A. B. NAIK DATE : 04/07/04

07-JAN-2005 15:33
 W:\squadg\TURNED\U3837\FINAL\STR2\U3837_sd.b1_02.dgn
 kalFord



PROJECT NO. U-3837
 FORSYTH COUNTY
 STATION: 21+64.07 -L-

SHEET 2 OF 2

STATE OF NORTH CAROLINA
 DEPARTMENT OF TRANSPORTATION
 RALEIGH

SUBSTRUCTURE
 BENT 1

REVISIONS						SHEET NO.
NO.	BY:	DATE:	NO.	BY:	DATE:	S-70
1			3			TOTAL SHEETS
2			4			78